

RO-UT-2-7

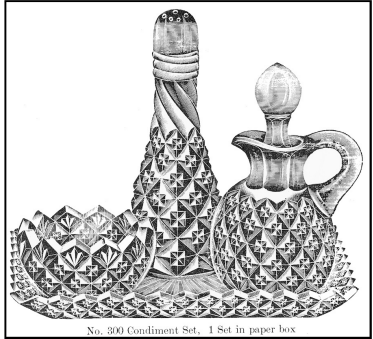
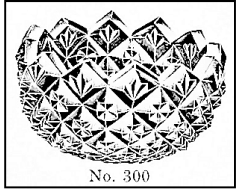


1-3/4" D x 7/8" H

COOPERATIVE FLINT #308
Cooperative Flint Glass
c.1910



WESTMORELAND NO. 300
aka ENGLISH HOBNAIL
Westmoreland Spec. Glass c.1912



Federal No. 5
Federal Glass c.1913

MOSSER GLASS NO. 116
c.1973 to present

Known colors: clear and colors
made old and new

Note: Connection between Cooper-
ative, Westmoreland and Federal
unknown. Westmoreland catalog of
1917 shows that their No. 555 line
has no other item that have any
fans in the top row.
See RO-UT-2-9.



From 2011 Mosser catalog