

H&J 934



H&J Image

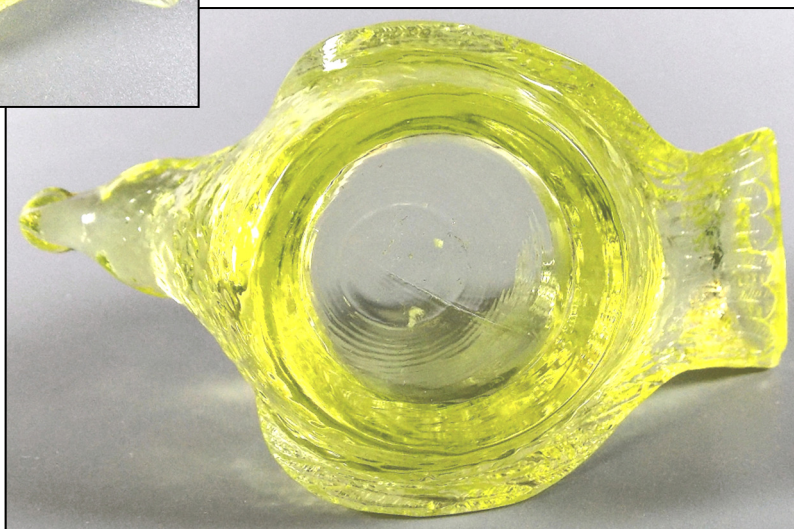
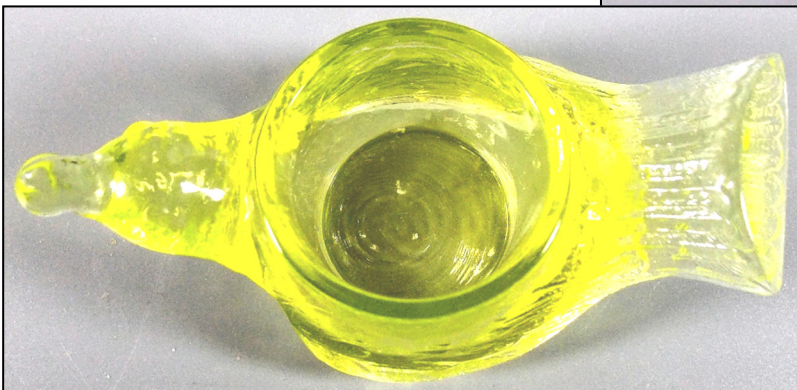
3-1/2" L x 1-7/8" W x 1-1/2" H

L. G. Wright Glass (See below)

Kim's Art Glass (Made by Summit)

E. E. Collectibles (Made by Summit)

Known colors: Wright; Clear, amber, blue, green and yellow. Kim's; Amethyst iridized. EE Collectibles; Red



L. G. Wright Glass Company was a glass wholesaler and retailer from 1936 to 1999. They owned their molds, some purchased from other companies, or companies going out of business, but the majority were new molds made for them. They did not manufacture glass. Many glass manufacturers made the glass for Wright over the years including Dalzell-Viking, Fenton, Fostoria, Gibson, Imperial, Morgantown, Mosser, New Martinsville, Paden City, Summit, Westmoreland, Wilkerson and Viking.