

H&J 871



H&J Image



95—2 in.
4 Ftd. Almond

2-11/16" PP x 1-1/8" H

CAPRICE NO. 95

Cambridge Glass c.1935-45
Imperial Glass c.1945-?
Summit Art Glass 1988-2006

Note: See H&J 447 and 448
for more info. This "End of Day"
color combination only made by
Imperial. Same as H&J 922.



CAMBRIDGE NR 2908 CAPRICE PATTERN 4 TOES

Ref Nr 26

ADD INFO CAMBRIDGE Nr 2908. MOLD WENT TO IMPERIAL, SUMMIT AND NOW AT CAMBRIDGE COLLECTORS (?)

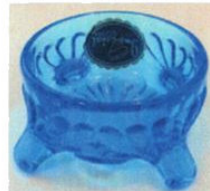
ITEMS: INDIVIDUAL *Reference* BERG SALTY COMMENTS # 34, # 15 CAMBRIDGE BENNET PAGE 68 COLOR CAMBRIDGE 1 PAGE 81

COLORS: CLEAR

REMARKS EARLY IMPERIAL ONLY PAPER LABEL, LATER HAD IG MARK. EARLY SUMMIT STILL HAD IG MARK, THEN REMOVED. SOME SUMMIT HAVE SMALL DOT IN BOTTOM CENTER



26



PICTURE
2 5/8" ACROSS, 1 1/8" HIGH

BERG DRAWING
2 5/8" ACROSS, 1 1/8" HIGH

UNMARKED IMPERIAL W/LA 2 5/8" ACROSS, 1 1/8" HIGH
IMPERIAL W/"IG" & LABEL 2 5/8" ACROSS, 1 1/8" HIGH