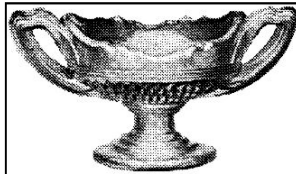


H&J 821



H&J Image



102
Ind. Salt
Oval

4-1/4" L x 1-7/8" W x 2-3/8" H

MOUNT VERNON NO. 102

Cambridge Glass Co. c.1920s

Known colors: Clear, crown tuscan, green, red, milk white and others

Note: The MOUNT VERNON pattern was reworked from the STRATFORD pattern. It was later made by Imperial Glass with the Cambridge mark. Summit acquired mold from Imperial and Rosso owns it as of 2006. Same as H&J 599.



STRATFORD pattern
with tooth top



STRATFORD pattern
with flat top