

H&J 2874



H&J Image



2933

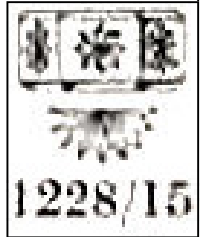


1-3/4" PP x 7/8" H
CAMBRIDGE NO. 2933
Cambridge Glass c.1910

WESTMORELAND NO. 1077
Westmoreland Glass c.1922

JOSEPHINEN NO. 1228/15
Josephinen (Germany) c.1925

Mosser-Reproductions
(See H&J 389 & 888)



1228/15

Known colors: Cambridge: Clear, amber, amethyst, blue, green and pink
Reproductions: See Mosser under Ed Bowman Research

Note: Cambridge, Westmoreland and foreign are polished; repros are not. No way of knowing the origin of any unless labeled. Same as H&J 336, 514 & 2095.