

**Jeffrey S. Evans & Associates**

Email: [info@jeffreysevans.com](mailto:info@jeffreysevans.com)

Website: [www.jeffreysevans.com](http://www.jeffreysevans.com)

**Mailing Address:**

P.O. Box 2638

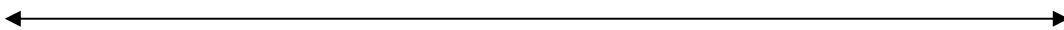
Harrisonburg, VA 22801

**Gallery Location & Shipping Address:**

2177 Green Valley Lane

Mt. Crawford, VA 22841

**Formerly Green Valley Auctions, Inc.**



**All auction information and images that follow are  
courtesy of Jeffrey S. Evans & Associates  
and is used here with their permission.**

**The same information may be found on their website.  
Only open salt and related lots are shown here for the  
benefit of open salt collectors. No further use of  
information or images without permission of  
Jeffrey S. Evans & Associates.**

# Open Salts – Jeffrey S. Evans Auction – November 17, 2021

Price realized include a 17% Buyer's Premium



**Lot 186**

**BLOWN-MOLDED GIII-25 HAT OPEN SALT,**

cobalt blue, wide folded rim, Ringed Type III base with rough pontil mark. Boston & Sandwich Glass Co. 1825-1835. 2 1/4" H, 2 1/2" DOA rim. *Undamaged.*

**Literature:** Barlow/Kaiser - *The Glass Industry in Sandwich*, Vol. 1, p. 278, fig. 1435.

**Provenance:** From the collection of Kenneth and Bernice Simpson, Acton, MA.

**Estimate:** 200.00 - 300.00    **Price Realized:** 507.88



**Lot 317**

**BB-1 BIRD BATH AND CORNUCOPIA PRESSED OPEN SALT,**

opaque white with mottled and swirled blue and periwinkle, scallop-and-point rim. Extremely rare. New England Glass Co. 1830-1840. 2" H, 2 1/8" x 3 1/8". *Excellent condition overall with a couple of chips to the exterior and interior of the rim. Having overall mold roughness and unusual yellow discoloration to areas of the rim, feet, and one area to the side, all as made.*

**Literature:** Bourne - *The William J. Elsholz Collection*, Vol. I, p. 78, lot 310. Neal - *Pressed Glass Salt Dishes of the Lacy Period*, p. 17. Rose - *The Story of American Pressed Glass of the Lacy Period*, p. 154, fig. 825, "Probably unique in this color".

**Provenance:** From the collection of Doug Reed, Maplewood, NJ.

**Catalogue Note:** This piece has been inspected closely, and the yellow discoloration is not caused by a later repair or epoxy.

**Estimate:** 300.00 - 500.00    **Price Realized:** 836.50



**Lot 318**

**BF-1 BASKET OF FLOWERS PRESSED OPEN SALT,**

unlisted medium green, on four feet. Probably extremely rare. Probably Boston & Sandwich Glass Co. 1830-1845. 2" H, 1 7/8" x 3 1/8". *Nearly proof with a few minor flakes to the rim and a couple sliver chips to the interior.*

**Literature:** Neal - *Pressed Glass Salt Dishes of the Lacy Period*, p. 1.

**Provenance:** From the collection of Doug Reed, Maplewood, NJ.

**Estimate:** 100.00 - 200.00    **Price Realized:** 717.00



**Lot 319**

**BF-1B BASKET OF FLOWERS PRESSED OPEN SALT,**

opalescent, raised on four feet. Rare. Boston & Sandwich Glass Co. 1830-1840. 2" H, 1 7/8" x 3 1/8". *Average to good condition with scattered chipping, one foot having a moderate loss causing the salt to wobble; most chipping to the edges and top of the scrolls.*

**Literature:** Neal - *Pressed Glass Salt Dishes of the Lacy Period*, p. 3.

**Provenance:** From the collection of Doug Reed, Maplewood, NJ.

**Estimate:** 50.00 - 100.00    **Price Realized:** 119.50



**Lot 320**

**BF-1D BASKET OF FLOWERS PRESSED OPEN SALT,**

unlisted teal, raised on four feet. Possibly unique. Boston & Sandwich Glass Co. 1830-1840. 2 1/8" H, 1 7/8" x 3". *Good condition overall with scattered chipping; having a loss of each corner curl, chipping to the feet.*

**Literature:** Neal - Pressed Glass Salt Dishes of the Lacy Period, p. 5. Parallels Barlow/Kaiser - The Glass Industry in Sandwich, Vol. 1, p. 281, fig. 1447.

**Provenance:** From the collection of Doug Reed, Maplewood, NJ.

**Estimate:** 300.00 - 500.00    **Price Realized:** 388.38



**Lot 321**

**BF-1D BASKET OF FLOWERS PRESSED OPEN SALT,**

unlisted medium blue, raised on four feet. Probably extremely rare. Boston & Sandwich Glass Co. 1830-1840. 2 1/8" H, 1 7/8" x 3". *Very good condition overall with some scattered chipping including to the edge, lacking one corner curl.*

**Literature:** Neal - Pressed Glass Salt Dishes of the Lacy Period, p. 5. Parallels Barlow/Kaiser - The Glass Industry in Sandwich, Vol. 1, p. 281, fig. 1447.

**Provenance:** From the collection of Doug Reed, Maplewood, NJ.

**Estimate:** 100.00 - 200.00    **Price Realized:** 328.63



**Lot 322**

**BF-1F BASKET OF FLOWERS PRESSED OPEN SALT,**

opaque violet blue with slight mottling, one rim end tab is stippled, on four feet. Very rare. Boston & Sandwich Glass Co. 1830-1840. 2" H, 1 3/4" x 3". *Nearly proof with a single moderate sliver chip to the interior of one rim.*

**Literature:** Neal - Pressed Glass Salt Dishes of the Lacy Period, p. 7.

**Provenance:** From the collection of Doug Reed, Maplewood, NJ.

**Estimate:** 300.00 - 500.00    **Price Realized:** 896.25



**Lot 323**

**BT-2 "PITTSBURGH." STEAMBOAT PRESSED OPEN SALT,**

medium blue, embossed on stern, rope table ring. Very rare. Attributed to the Stourbridge Flint Glass Works, Pittsburgh, PA. 1830-1845. 1 1/2" H, 1 7/8" x 3 5/8". *Excellent condition overall with some excepted flaking/roughness to the rim, a minor flake to the tip of the rutter.*

**Literature:** Neal - Pressed Glass Salt Dishes of the Lacy Period, p. 21. Innes - Pittsburgh Glass, front dust jacket and color pl. 6. Spillman - Corning, p. 174, fig. 651. Wilson - American Glass, Vol. 1, p. 296, fig. 331 and color p. 249.

**Provenance:** From the collection of Doug Reed, Maplewood, NJ.

**Estimate:** 400.00 - 600.00    **Price Realized:** 836.50



**Lot 324**

**BT-2 "PITTSBURGH." STEAMBOAT PRESSED OPEN SALT,**

colorless, embossed on stern, rope table ring. Rare. Attributed to the Stourbridge Flint Glass Works, Pittsburgh, PA. 1830-1845. 1 1/2" H, 1 7/8" x 3 5/8". *Very good condition overall with some flaking to the rim, a chip to the tip of the rutter, some chipping/losses to the base edge.*

**Literature:** Neal - Pressed Glass Salt Dishes of the Lacy Period, p. 21.

**Provenance:** From the collection of Doug Reed, Maplewood, NJ.

**Estimate:** 50.00 - 100.00    **Price Realized:** 83.65



**Lot 325**

**BT-4A "LAFAYET" STEAMBOAT PRESSED OPEN SALT,**

opallescent blue, marked "B. S. / GLASS. / Co" on stern and "SANDWICH" on interior base. Very rare. Boston & Sandwich Glass Co. 1830-1845. 1 1/2" H, 2" x 3 1/2". *Very good condition overall with two small chips to the stern, some minor flaking to the interior of the rim, a flake to the tip of the rutter, some minor flaking to the base edge.*

**Literature:** Neal - Pressed Glass Salt Dishes of the Lacy Period, p. 25.

**Provenance:** From the collection of Doug Reed, Maplewood, NJ.

**Estimate:** 200.00 - 300.00    **Price Realized:** 776.75



**Lot 326**

**BT-4B "LAFAYET" STEAMBOAT PRESSED OPEN SALT,**

unlisted colorless, marked "B. & S. / GLASS. / Co" on stern and "SANDWICH" on interior base. Unknown rarity. Boston & Sandwich Glass Co. 1830-1845. 1 1/2" H, 2" x 3 5/8". *Very good condition overall with scattered chipping to the interior of the rim, rutter having some roughness.*

**Literature:** Neal - Pressed Glass Salt Dishes of the Lacy Period, p. 26.

**Provenance:** From the collection of Doug Reed, Maplewood, NJ.

**Estimate:** 200.00 - 300.00    **Price Realized:** 298.75



**Lot 327**

**BT-4D "LAFAYET" STEAMBOAT PRESSED OPEN SALT,**

opal-opaque, marked "B. & S. / GLASS. / Co" on stern and "SANDWICH" on interior base. Color not listed in Neal, probably extremely rare. Boston & Sandwich Glass Co. 1830-1845. 1 1/2" H, 2" x 3 5/8". *Excellent condition overall with a single small chip to the rim and some scattered light flaking and roughness, having a chip/small loss to the table ring.*

**Literature:** Neal - Pressed Glass Salt Dishes of the Lacy Period, p. 28. Color listed in The Acorn, Volume 15, 2008/2009, p. 25, "Pressed Glass Salt Dishes of the Lacy Period 1825-1850: An Addendum." Parallels Barlow/Kaiser - The Glass Industry in Sandwich, Vol. 1, p. 287, fig. 1464b.

**Provenance:** From the collection of Doug Reed, Maplewood, NJ.

**Estimate:** 400.00 - 600.00    **Price Realized:** 836.50



**Lot 328**

**BT-4D "LAFAYET" STEAMBOAT PRESSED OPEN SALT,**

colorless, marked "B. & S. / GLASS. / Co" on stern and "SANDWICH" on interior base. Rare. Boston & Sandwich Glass Co. 1830-1845. 1 1/2" H, 2" x 3 5/8". *Nearly proof with a short check to the stern, some roughness to the rutter, and a single base bead being tipped.*

**Literature:** Neal - Pressed Glass Salt Dishes of the Lacy Period, p. 28. Parallels Barlow/Kaiser - The Glass Industry in Sandwich, Vol. 1, p. 287, fig. 1464b.

**Provenance:** From the collection of Doug Reed, Maplewood, NJ.

**Estimate:** 50.00 - 100.00    **Price Realized:** 191.20



**Lot 329**

**BT-8 "LAFAYET" STEAMBOAT PRESSED OPEN SALT,**

silvery opaque pale blue, marked "B. & S. / GLASS. / Co" on stern and "SANDWICH" on interior and under base. Very rare. Boston & Sandwich Glass Co. 1830-1845. 1 5/8" H, 2" x 3 5/8". *Excellent condition with some light flaking to the rim, a small chip to the bow, a flake to the stern, and a some chipping to the table ring.*

**Literature:** Neal - Pressed Glass Salt Dishes of the Lacy Period, p. 33.

**Provenance:** From the collection of Doug Reed, Maplewood, NJ.

**Estimate:** 500.00 - 800.00    **Price Realized:** 836.50



**Lot 330**

**BT-8 "LAFAYET" STEAMBOAT PRESSED OPEN SALT,**

silvery opaque powder blue, marked "B. & S. / GLASS. / Co" on stern and "SANDWICH" on interior and under base. Very rare. Boston & Sandwich Glass Co. 1830-1845. 1 5/8" H, 1 7/8" x 3 5/8". *Very good condition overall with a minor loss to the stern (piece retained), and a moderate loss to the table ring.*

**Literature:** Neal - Pressed Glass Salt Dishes of the Lacy Period, p. 33.

**Provenance:** From the collection of Doug Reed, Maplewood, NJ.

**Estimate:** 400.00 - 600.00    **Price Realized:** 328.63



**Lot 331**

**BT-8 "LAFAYET" STEAMBOAT PRESSED OPEN SALT,**

silvery opaque powder blue, marked "B. & S. / GLASS. / Co" on stern and "SANDWICH" on interior and under base. Very rare. Boston & Sandwich Glass Co. 1830-1845. 1 5/8" H, 1 7/8" x 3 5/8". *Excellent condition overall with some expected scattered flaking to the rim, high-points, and table ring. Having two small burst bubbles to the bow, as made.*

**Literature:** Neal - Pressed Glass Salt Dishes of the Lacy Period, p. 33.

**Provenance:** From the collection of Doug Reed, Maplewood, NJ.

**Estimate:** 200.00 - 300.00    **Price Realized:** 627.25



**Lot 332**

**BT-8 "LAFAYET." STEAMBOAT PRESSED OPEN SALT,**

colorless, marked "B. & S. / GLASS. / Co" on stern and "SANDWICH" on interior and under base. Scarce. Boston & Sandwich Glass Co. 1830-1845. 1 5/8" H, 1 7/8" x 3 5/8". *Very good to excellent condition overall with some minor flaking to the rim, some chipping/minor losses to the base.*

**Literature:** Neal - Pressed Glass Salt Dishes of the Lacy Period, p. 33.

**Provenance:** From the collection of Doug Reed, Maplewood, NJ.

**Estimate:** 50.00 - 100.00    **Price Realized:** 155.35



**Lot 333**

**BT-9 BOAT PRESSED OPEN SALT,**

deep cobalt blue, plain rim and base. Rare. Boston & Sandwich Glass Co. 1830-1845. 1 5/8" H, 2" x 4". *Excellent condition overall with much less than average flaking with a couple to the rim, bow, and pattern, a single small bruise to the rim.*

**Literature:** Neal - Pressed Glass Salt Dishes of the Lacy Period, p. 34. Parallels Barlow/Kaiser - The Glass Industry in Sandwich, Vol. 1, p. 288, fig. 1465.

**Provenance:** From the collection of Doug Reed, Maplewood, NJ.

**Estimate:** 100.00 - 200.00    **Price Realized:** 448.13



**Lot 334**

**BT-9 BOAT PRESSED OPEN SALT,**

light fiery opalescent, plain rim and base. Scarce. Boston & Sandwich Glass Co. 1830-1845. 1 5/8" H, 2" x 4". *Nearly proof with a single flake to the stern. Some expected minor roughness to the rim, as made.*

**Literature:** Neal - Pressed Glass Salt Dishes of the Lacy Period, p. 34. Barlow/Kaiser - The Glass Industry in Sandwich, Vol. 1, p. 288, fig. 1465. Spillman - Corning, p. 176, fig. 658.

**Provenance:** From the collection of Doug Reed, Maplewood, NJ.

**Estimate:** 100.00 - 200.00    **Price Realized:** 239.00



**Lot 335**

**BT-9 BOAT PRESSED OPEN SALT,**

colorless, plain rim and base. Scarce. Boston & Sandwich Glass Co. 1830-1845. 1 5/8" H, 2" x 4". *Very good condition overall with a moderate bruise to the interior of the rim, a couple of flakes to the rim, and a flake to the tip of the rutter.*

**Literature:** Neal - Pressed Glass Salt Dishes of the Lacy Period, p. 34.

Parallels Barlow/Kaiser - The Glass Industry in Sandwich, Vol. 1, p. 288, fig. 1465; and Spillman - Corning, p. 176, fig. 658.

**Provenance:** From the collection of Doug Reed, Maplewood, NJ.

**Estimate:** 50.00 - 100.00    **Price Realized:** 107.55



**Lot 336**

**CD-2 COVERED BEADED SCROLL AND BASKET OF FLOWERS PRESSED SALT,**

colorless, cover with pine cone finial and interior rim beads arranged 10 x 19 x 9 x 19. Extremely rare. Boston & Sandwich Glass Co. 1835-1845. 3 1/4" HOA, 1 7/16" x 2 7/16" cover. *Base in excellent condition with some scattered flaking to the interior of the rim and some scattered mold roughness; cover having post-production polishing to the rim, and a chip and a couple minor flakes to the rim.*

**Literature:** Neal - Pressed Glass Salt Dishes of the Lacy Period, p. 38.

**Provenance:** From the collection of Doug Reed, Maplewood, NJ.

**Estimate:** 100.00 - 200.00    **Price Realized:** 657.25



**Lot 337**

**CD-4 LYRE PRESSED COVERED SALT,**

colorless, on four scrolled feet, variant cover with beads on rim interior arranged 10 x 20 x 10 x 20. Colorless not recorded by Neal, extremely rare. Boston & Sandwich Glass Co. 1835-1845. 3 1/8" HOA, 1 7/8" x 3" base. *Base having a crack running from the rim and into the side; cover having a few flakes to the rim.*

**Literature:** Neal - Pressed Glass Salt Dishes of the Lacy Period, p. 43.

**Provenance:** From the collection of Doug Reed, Maplewood, NJ.

**Estimate:** 80.00 - 120.00    **Price Realized:** 567.63



**Lot 338**

**CN-1A CROWN PRESSED OPEN SALT,**

deep brilliant cobalt blue, raised on four scrolled feet. Rare. Boston & Sandwich Glass Co. 1830-1845. 2 1/8" H, 2" x 3 1/8". *Proof. Having some minor areas of roughness, as made.*

**Literature:** Neal - Pressed Glass Salt Dishes of the Lacy Period, p. 47. Spillman - Corning, p. 177, fig. 665. Parallels Barlow/Kaiser - The Glass Industry in Sandwich, Vol. 1, p. 284, fig. 1455.

**Provenance:** From the collection of Doug Reed, Maplewood, NJ.

**Estimate:** 80.00 - 120.00    **Price Realized:** 239.00



**Lot 339**

**CN-1B CROWN PRESSED OPEN SALT,**

fiery opalescent, raised on four scrolled feet. Very rare. Boston & Sandwich Glass Co. 1830-1845. 2 1/8" H, 2" x 3 1/8". *Very good condition overall with some scattered flaking and chipping, a couple base loops being tipped.*

**Provenance:** From the collection of Doug Reed, Maplewood, NJ.

**Estimate:** 100.00 - 200.00    **Price Realized:** 179.25



**Lot 340**

**CT-1 CHARIOT PRESSED OPEN SALT,**

unlisted opal opaque, scallop-and-point rim. Very or extremely rare. Boston & Sandwich Glass Co. 1835-1850. 1 3/4" H, 2 1/8" x 2 7/8". *Proof. Slight underfill to one corner of rim.*

**Literature:** Neal - Pressed Glass Salt Dishes of the Lacy Period, p. 35. Parallels Barlow/Kaiser - The Glass Industry in Sandwich, Vol. 1, p. 285, fig. 1461.

**Provenance:** From the collection of Doug Reed, Maplewood, NJ. Jeffrey S. Evans & Associates, 5/20/2017, lot 266. Ex-Joan E. Kaiser collection of Sandwich and related glass (Acc. #91.23) (retains collection label). Raymond Charland, East Hartford, CT.

**Estimate:** 200.00 - 300.00    **Price Realized:** 567.63



**Lot 341**

**CT-1 CHARIOT PRESSED OPEN SALT,**

silvery opaque white, scallop-and-point rim. Very rare. Boston & Sandwich Glass Co. 1835-1850. 1 3/4" H, 2 1/8" x 2 7/8". *Nearly proof with a single chip to one base scallop.*

**Literature:** Neal - Pressed Glass Salt Dishes of the Lacy Period, p. 35.

**Provenance:** From the collection of Doug Reed, Maplewood, NJ.

**Estimate:** 80.00 - 120.00    **Price Realized:** 143.40



**Lot 342**

**CT-1 CHARIOT PRESSED OPEN SALT,**

swirled silvery opaque powder blue, medium blue, and periwinkle, scallop-and-point rim. Very rare. Boston & Sandwich Glass Co. 1835-1850. 1 3/4" H, 2 1/8" x 2 7/8". *Excellent condition with a few base scallops being tipped or having minor losses. Rim having roughness at the corners and an open bubble at one corner, all as made.*

**Literature:** Neal - Pressed Glass Salt Dishes of the Lacy Period, p. 35. Barlow/Kaiser - The Glass Industry in Sandwich, Vol. 1, p. 285, fig. 1461. Spillman - Corning, p. 176, fig. 659. Wilson - American Glass, Vol. 1, p. 349, fig. 443.

**Provenance:** From the collection of Doug Reed, Maplewood, NJ. Collector's Sales and Services, 3/27/1994, lot 674. Ex-collection of Gladys W. and Paul C. Richards (retains collection label).

**Estimate:** 100.00 - 200.00    **Price Realized:** 268.88



**Lot 343**

**CT-1A CHARIOT PRESSED OPEN SALT,**

colorless, scallop-and-point rim. Scarce. Boston & Sandwich Glass Co. 1835-1850. 1 3/4" H, 2 1/8" x 2 7/8". *Very good condition overall with some flaking/chipping to the rim with only minor affects to the profile, a loss to one base scallop and scattered flaking to others. Having expected scattered mold roughness, as made.*

**Literature:** Neal - Pressed Glass Salt Dishes of the Lacy Period, p. 36. Parallels Barlow/Kaiser - The Glass Industry in Sandwich, Vol. 1, p. 285, fig. 1461.

**Provenance:** From the collection of Doug Reed, Maplewood, NJ.

**Estimate:** 50.00 - 80.00    **Price Realized:** 71.70



**Lot 344**

**DN-1 DOLPHIN PRESSED OPEN SALT,**

colorless, shell-form bowl raised on a dolphin standard and block-and-recess base. Extremely rare. France. 1830-1850. 2 1/2" H, 2 3/8" x 3" rim.

*Proof with some high-point roughness to the base and rim. Scattered annealing lines to the bowl, as made.*

**Literature:** Neal - Pressed Glass Salt Dishes of the Lacy Period, p. 73.

**Provenance:** From the collection of Doug Reed, Maplewood, NJ.

**Estimate:** 200.00 - 300.00    **Price Realized:** 717.00



**Lot 345**

**EE-3B EAGLE AND SHIELD PRESSED OPEN SALT,**

opalescent, raised on four feet. Rare. Boston & Sandwich Glass Co. 1830-1845. 2 1/8" H, 2" x 3 1/4". *Proof. Having some minor roughness to the interior of the rim, as made.*

**Literature:** Neal - Pressed Glass Salt Dishes of the Lacy Period, p. 79. Barlow/Kaiser - The Glass Industry in Sandwich, Vol. 1, p. 283, fig. 1453. Spillman - Corning, p. 179, fig. 673, and color Plate Nine. Like Bourne - The William J. Elsholz Collection, Vol. I, p. 79, lot 320, which was exhibited at the Detroit Institute of Arts in 1953.

**Provenance:** From the collection of Doug Reed, Maplewood, NJ.

**Estimate:** 80.00 - 120.00    **Price Realized:** 215.10



**Lot 346**

**EE-3B EAGLE AND SHIELD PRESSED OPEN SALT,**

opalescent, raised on four feet. Rare. Boston & Sandwich Glass Co. 1830-1845. 2 1/8" H, 2" x 3 1/4". *Nearly proof with a single small chip to the side of one foot. Having some light roughness to the backside of the feet, as made.*

**Literature:** Neal - Pressed Glass Salt Dishes of the Lacy Period, p. 79. Barlow/Kaiser - The Glass Industry in Sandwich, Vol. 1, p. 283, fig. 1453. Spillman - Corning, p. 179, fig. 673, and color Plate Nine. Like Bourne - The William J. Elsholz Collection, Vol. I, p. 79, lot 320, which was exhibited at the Detroit Institute of Arts in 1953.

**Provenance:** From the collection of Kenneth and Bernice Simpson, Acton, MA.

**Estimate:** 50.00 - 100.00    **Price Realized:** 131.45





**Lot 347**

**EE-7 EAGLE PRESSED OPEN SALT,**

colorless, Empire sofa form raised on four scrolled feet, very faint stippling and diamonds under base. Rare. Probably Boston & Sandwich Glass Co. 1830-1845. 2 1/4" H, 2 5/8" x 3 3/4". *Proof. Having some expected light mold roughness, as made.*

**Literature:** Neal - Pressed Glass Salt Dishes of the Lacy Period, p. 83. Spillman - Corning, p. 179, fig. 676. Like Bourne - The William J. Elsholz Collection, Vol. I, p.76, lots 302-304.

**Provenance:** From the collection of Doug Reed, Maplewood, NJ.

**Estimate:** 80.00 - 120.00    **Price Realized:** 155.35



**Lot 348**

**EE-7A EAGLE PRESSED OPEN SALT,**

colorless, Empire sofa form raised on four scrolled feet. Extremely rare. Probably Boston & Sandwich Glass Co. 1830-1845. 2 1/8" H, 2 5/8" x 3 3/4". *Undamaged except for chip/roughness to interior of three feet, probably as made. Some basal residue.*

**Published:** Bourne - The William J. Elsholz Collection, Vol. I, p. 74, lot 302. **Literature:** Neal - Pressed Glass Salt Dishes of the Lacy Period, p. 84.

**Provenance:** From the collection of Doug Reed, Maplewood, NJ. Jeffrey S. Evans & Associates, 5/20/2017, lot 494. Ex-collection of Robert Aron, Cape Cod, MA. Richard A. Bourne Co., Inc., 12/9/1986, lot 302 (miscataloged as EE-7). Ex-collection of William J. Elsholz (retains collection label). Katherine Woodward, 6/7/1949.

**Catalogue Note:** This is the only example of this salt that we have sold.

**Estimate:** 300.00 - 500.00    **Price Realized:** 358.50



**Lot 349**

**GA-2 GOTHIC ARCH PRESSED OPEN SALT,**

opalescent violet blue, even-scallop rim, raised on short feet. Very rare. Boston & Sandwich Glass Co. 1835-1845. 1 5/8" H, 2" x 2 3/4". *Excellent condition with a few minor flakes to the rim and a single small sliver chip to the interior of the rim, some base corners being lightly tipped, one foot having a chip to the edge. Having a large potstone settled in the base, as made.*

**Literature:** Neal - Pressed Glass Salt Dishes of the Lacy Period, p. 90. Parallels Barlow/Kaiser - The Glass Industry in Sandwich, Vol. 1, p. 288, fig. 1466.

**Provenance:** From the collection of Doug Reed, Maplewood, NJ.

**Estimate:** 200.00 - 300.00    **Price Realized:** 143.40



**Lot 350**

**GA-4 GOTHIC ARCH AND HEART PRESSED OPEN SALT,**

opalescent medium blue to mottled opaque powder blue, even scallop rim. Unlisted color, possibly unique. Probably Boston & Sandwich Glass Co. 1835-1845. 1 3/4" H, 2" x 2 3/4". *Very good condition overall with scattered flaking/roughness to around the rim and edges.*

**Literature:** Neal - Pressed Glass Salt Dishes of the Lacy Period, p. 92.

**Provenance:** From the collection of Doug Reed, Maplewood, NJ.

**Estimate:** 300.00 - 500.00    **Price Realized:** 1553.50



**Lot 351**

**GA-4A GOTHIC ARCH AND HEART PRESSED OPEN SALT,**

light peacock green, even-scallop rim, raised on bucket-like feet. Probably extremely rare, possibly unique. Probably Boston & Sandwich Glass Co. 1835-1845. 1 3/4" H, 2" x 2 3/4". *Very good to excellent condition overall with some flaking to the rim and base edge, a single sliver chip to the exterior of one corner below the rim. Having some scattered annealing lines, having an air-trap imperfection to the interior below the rim, as made.*

**Literature:** Neal - Pressed Glass Salt Dishes of the Lacy Period, p. 93.

**Provenance:** From the collection of Doug Reed, Maplewood, NJ.

**Estimate:** 200.00 - 300.00    **Price Realized:** 1673.00



**Lot 352**

**GA-4A GOTHIC ARCH AND HEART PRESSED OPEN SALT,**

opalescent medium blue with some light blue mottling, even-scallop rim, raised on bucket-like feet. Scarce. Probably Boston & Sandwich Glass Co. 1835-1845. 1 3/4" H, 2" x 2 3/4".

*Average to good condition with scattered flaking and chipping to the rim, corners, and base edge, with the base corner having a loss.*

**Literature:** Neal - Pressed Glass Salt Dishes of the Lacy Period, p. 93. Like Bourne - The William J. Elsholz Collection, Vol. I, pp. 30 and 33, lot 152.

**Provenance:** From the collection of Doug Reed, Maplewood, NJ.

**Estimate:** 80.00 - 120.00    **Price Realized:** 155.35



**Lot 353**

**HL-2 WASHINGTON / LAFAYETTE HISTORICAL PRESSED OPEN SALT,**

unlisted frosted colorless, scallop-and-point rim, name faintly embossed above Lafayette bust, grape bunch and leaf base. Possibly unique. Probably New England Glass Co. 1830-1840. 2 1/4" H, 2 1/8" x 3". *Nearly proof with some flaking to the rim, a couple of chips to the interior of the rim. Having a U-shaped bubble imperfection at the rim, as made.*

**Literature:** Neal - Pressed Glass Salt Dishes of the Lacy Period, p. 118.

**Provenance:** From the collection of Doug Reed, Maplewood, NJ.

**Estimate:** 400.00 - 600.00    **Price Realized:** 1314.50



**Lot 354**

**JY-2 JERSEY MARKED PRESSED OPEN SALT,**

light bottle green, embossed "JERSEY / GLASS. Co / Ny. N.YORK" under base, scallop-and-point rim. Rare. Jersey Glass Co. 1835-1850. 1 7/8" H, 2 1/8" x 3".

*Excellent condition overall with some light flaking to the rim, a chip to the edge of one foot. Having expected scattered mold roughness, as made.*

**Literature:** Neal - Pressed Glass Salt Dishes of the Lacy Period, p. 124. Spillman - Corning, p. 181, fig. 685. Like Bourne - The William J. Elsholz Collection, Vol. II, pp. 272, 273, lot 1002.

**Provenance:** From the collection of Doug Reed, Maplewood, NJ.

**Estimate:** 80.00 - 120.00    **Price Realized:** 268.88



**Lot 355**

**JY-2B JERSEY UNMARKED PRESSED OPEN SALT,**

light green, scallop and point rim, 12-point star under base. Scarce. Jersey Glass Co. or New England Glass Co. 1835-1850. 1 7/8" H, 2 1/4" x 3". *Nearly proof with a few minor sliver chips to the base edge. Having expected mold roughness, as made.*

**Literature:** Neal - Pressed Glass Salt Dishes of the Lacy Period, p. 126.

**Provenance:** From the collection of Doug Reed, Maplewood, NJ.

**Estimate:** 80.00 - 120.00    **Price Realized:** 131.45



**Lot 356**

**LE-1 LYRE PRESSED OPEN SALT,**

opaque dark blue with light mottling showing reddish opalescence in transmitted light, on four scroll feet. Very rare. Boston & Sandwich Glass Co. and others. 1835-1850. 1 7/8" H, 2" x 3 1/8". *Virtually proof with a single chip to the backside of one foot, not affecting the profile. Having some minor expected mold roughness, as made.*

**Literature:** Neal - Pressed Glass Salt Dishes of the Lacy Period, p. 127. Like Bourne - The William J. Elsholz Collection, Vol. I, p. 30, lot 154, catalogued as unique.

**Provenance:** From the collection of Doug Reed, Maplewood, NJ.

**Estimate:** 400.00 - 600.00    **Price Realized:** 896.25



**Lot 357**

**LE-1 LYRE PRESSED OPEN SALT,**

clamwater/clambroth, raised on four scrolled feet. Extremely rare. Boston & Sandwich Glass Co. and others. 1835-1850. 1 7/8" H, 2" x 3 1/8". *Very good condition overall with a couple of sliver chips to the interior of the rim; some flaking to the backside of the feet, having a short check to one foot.*

**Literature:** Neal - Pressed Glass Salt Dishes of the Lacy Period, p. 127.

**Provenance:** From the collection of Doug Reed, Maplewood, NJ.

**Estimate:** 200.00 - 300.00    **Price Realized:** 155.35



**Lot 358**

**LE-2 LYRE PRESSED OPEN SALT,**

deep cobalt blue, shaped rim, on four scrolled feet. Very rare. Boston & Sandwich Glass Co. 1835-1845. 1 7/8" H, 1 7/8" x 3 1/8". *One foot having been reattached and repaired, no further damage.*

**Literature:** Neal - Pressed Glass Salt Dishes of the Lacy Period, p. 129. Bourne - The William J. Elsholz Collection, Vol. I, p. 30, lot 156.

**Provenance:** From the collection of Doug Reed, Maplewood, NJ. Skinner, Inc., 3/9/2002, lot 608. Ex-collection of Frank E. Jedlicka (retains collection label). Richard A. Bourne Co., Inc., 12/9/1986, lot 156. Ex-collection of William J. Elsholz (retains collection label). Richard H. Wood, 6/1/1972.

**Estimate:** 100.00 - 200.00    **Price Realized:** 119.50



**Lot 359**

**LE-3 LYRE PRESSED OPEN SALT,**

opalescent medium blue, raised on four scrolled feet. Very rare. Boston & Sandwich Glass Co. 1835-1850. 1 7/8" H, 2" x 3 1/8".

*Virtually proof with a couple of isolated flakes.*

**Literature:** Neal - Pressed Glass Salt Dishes of the Lacy Period, p. 131. Barlow/Kaiser - The Glass Industry in Sandwich, Vol. 1, p. 282, fig. 1450. Spillman - Corning, p. 182, fig. 690.

**Provenance:** From the collection of Doug Reed, Maplewood, NJ.

**Estimate:** 500.00 - 800.00    **Price Realized:** 717.00



**Lot 360**

**MV-1 MOUNT VERNON PRESSED OPEN SALT**

black olive green, scallop-and-point rim. Very rare. Mount Vernon or Saratoga Glass Co. 1835-1850. 1 3/4" H, 2 1/8" x 2 7/8".

*Proof. Having some expected light mold roughness, as made.*

**Literature:** Neal - Pressed Glass Salt Dishes of the Lacy Period, p. 132. Spillman - Corning, p. 183, fig. 691. Parallels Barlow/Kaiser - The Glass Industry in Sandwich, Vol. 1, p. 286, fig. 1462.

**Provenance:** From the collection of Doug Reed, Maplewood, NJ.

**Estimate:** 200.00 - 300.00    **Price Realized:** 418.25



**Lot 361**

**MV-1 MOUNT VERNON PRESSED OPEN SALT,**

bluish aquamarine, scallop-and-point rim. Scarce. Probably Mount Vernon Glass Co., possibly Boston & Sandwich Glass Co. 1835-1850. 1 7/8" H, 2" x 2 3/4". *Nearly proof with a single chip to the rim. Some expected light mold roughness to the rim, as made.*

**Literature:** Neal - Pressed Glass Salt Dishes of the Lacy Period, p. 132. Parallels Barlow/Kaiser - The Glass Industry in Sandwich, Vol. 1, p. 286, fig. 1462.

**Provenance:** From the collection of Doug Reed, Maplewood, NJ.

**Estimate:** 100.00 - 200.00    **Price Realized:** 155.35



**Lot 362**

**MV-1 MOUNT VERNON PRESSED OPEN SALT,**

light grey blue, scallop-and-point rim. Rare. Probably Boston & Sandwich Glass Co., possibly Mount Vernon Glass Co. 1835-1850. 1 3/4" H, 2 1/8" x 2 7/8". *Excellent condition overall with a single chip to one rim corner, and a chip to two base corners. Having expected mold roughness to the rim, as made.*

**Literature:** Neal - Pressed Glass Salt Dishes of the Lacy Period, p. 132. Parallels Barlow/Kaiser - The Glass Industry in Sandwich, Vol. 1, p. 286, fig. 1462.

**Provenance:** From the collection of Doug Reed, Maplewood, NJ. Northeast Auctions, 8/3/2007, lot 265.

**Estimate:** 100.00 - 200.00    **Price Realized:** 418.25



**Lot 363**

**MV-1 VARIANT MOUNT VERNON PRESSED OPEN SALT,**

unlisted deep cobalt blue, scallop-and-point rim, variant base with small central dot within a diamond, and without circles to tips of feet. Probably extremely rare. Probably Boston & Sandwich Glass Co., possibly Mount Vernon Glass Co. 1835-1850. 1 3/4" H, 2 1/8" x 2 7/8". *Very good condition, loss to inside of one foot visible on long edge, and shallow chip to one base scallop. Horizontal annealing check to two corners of body that do not affect the resonance, and moderate mold roughness to two rim corners, all as made.*

**Literature:** Parallels Neal - Pressed Glass Salt Dishes of the Lacy Period, p. 132. Parallels Barlow/Kaiser - The Glass Industry in Sandwich, Vol. 1, p. 286, fig. 1462.

**Provenance:** From the collection of Doug Reed, Maplewood, NJ. Jeffrey S. Evans & Associates, 5/20/2017, lot 493. Ex-collection of Robert Aron, Cape Cod, MA.

**Estimate:** 400.00 - 600.00    **Price Realized:** 418.25



**Lot 364**

**NE-1A NEW ENGLAND MARKED PRESSED OPEN SALT,**

opaque white with areas of opalescence, embossed under base, scallop-and-point rim. Very rare. New England Glass Co. 1830-1845. 2" H, 2 1/8" x 3". *Excellent condition with some minor flaking to the rim, some flaking/chipping to the top and bottoms of the edge columns.*

**Literature:** Neal - Pressed Glass Salt Dishes of the Lacy Period, p. 138.

**Provenance:** From the collection of Doug Reed, Maplewood, NJ. Skinner, Inc., 3/9/2002, lot 162. Ex-collection of Frank E. Jedlicka (retains collection label).

**Estimate:** 50.00 - 100.00    **Price Realized:** 191.20



**Lot 365**

**NE-4 NEW ENGLAND MARKED PRESSED OPEN SALT,**

colorless lead glass, embossed under base, scallop and point rim. Plentiful. New England Glass Co. 1835-1850. 2" H, 2 1/8" x 3". *Proof.*

**Literature:** Neal - Pressed Glass Salt Dishes of the Lacy Period, p. 141.

**Provenance:** From the collection of Doug Reed, Maplewood, NJ.

**Estimate:** 50.00 - 100.00    **Price Realized:** 71.70



**Lot 366**

**OG-18 RECTANGULAR ARCHES PRESSED OPEN SALT,**

unlisted translucent jade green, lobed edge, raised on four paw feet, diamond underside. Possibly unique. Maker unverified. 1830-1845. 2" H, 2 1/2" x 3 1/2".

*Nearly proof with a single sliver chip to one rim corner. Having a minor bruise-like imperfection to the underside of one foot, as made.*

**Literature:** Neal - Pressed Glass Salt Dishes of the Lacy Period, p. 164.

**Provenance:** From the collection of Doug Reed, Maplewood, NJ.

**Estimate:** 500.00 - 800.00    **Price Realized:** 836.50



**Lot 367**

**OG-4B OBLONG PRESSED OPEN SALT,**

unlisted medium blue green, plain rim with protruding lower corners and feet, like OG-4a but with stippling at lower base edge. Probably extremely rare. Possibly Pittsburgh area. 1835-1850. 1 5/8" H, 2" x 3". *Good condition overall with scattered flaking to the interior of the rim and scattered chipping to the pattern and base edge including a moderate to sizeable example to one corner.*

**Literature:** Neal - Pressed Glass Salt Dishes of the Lacy Period, p. 150.

**Provenance:** From the collection of Doug Reed, Maplewood, NJ.

**Estimate:** 200.00 - 300.00    **Price Realized:** 448.13



**Lot 368**

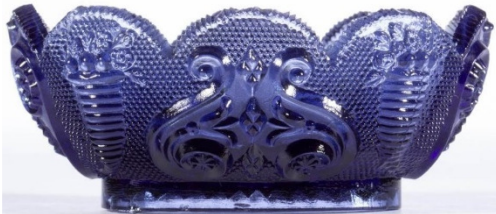
**OL-11 CORNUCOPIA AND SHIELD OVAL PRESSED OPEN SALT,**

cobalt blue, serrated large-scallop rim, star base. Very rare. Boston & Sandwich Glass Co. and possibly others. 1830-1850. 1 1/2" H, 2 1/2" x 3 1/4". *Inner rim chipping/mold roughness that does not affect the rim profile, several short annealing checks off rim at low points between scallops which is commonly seen on this group of salts.*

**Literature:** Neal - Pressed Glass Salt Dishes of the Lacy Period, p. 213.

**Provenance:** From the collection of Doug Reed, Maplewood, NJ. Jeffrey S. Evans & Associates, 9/26/2009, lot 637.

**Estimate:** 200.00 - 300.00    **Price Realized:** 155.35



**Lot 369**

**OL-12 CORNUCOPIA AND SCROLL OVAL PRESSED OPEN SALT,**

unlisted soft lavender, serrated large-scallop rim. Probably extremely rare. Boston & Sandwich Glass Co. 1835-1850. 1 3/8" H, 2 1/2" x 3 3/8". *Excellent condition overall with a couple of shallow chips and a few scattered flakes to the rim, some minor flaking around the base edge.*

**Literature:** Neal - Pressed Glass Salt Dishes of the Lacy Period, p. 214. Parallels Spillman - Corning, p. 186, fig. 706.

**Provenance:** From the collection of Doug Reed, Maplewood, NJ.

**Estimate:** 200.00 - 300.00    **Price Realized:** 268.88



**Lot 370**

**OL-12A CORNUCOPIA AND SCROLL OVAL PRESSED OPEN SALT,**

purple blue, serrated large-scallop rim. Very rare. Boston & Sandwich Glass Co. 1835-1850. 1 3/8" H, 2 1/2" x 3 3/8". *Very good condition overall with some post-production polishing to the base edge and underside of the base, a few scattered minute high-point pattern flakes. Having some expected light roughness to the rim, as made.*

**Literature:** Neal - Pressed Glass Salt Dishes of the Lacy Period, p. 215.

**Provenance:** From the collection of Doug Reed, Maplewood, NJ.

**Estimate:** 100.00 - 200.00    **Price Realized:** 107.55



**Lot 371**

**OL-12B CORNUCOPIA AND SCROLL OVAL PRESSED OPEN SALT,**

cobalt blue with light opal streaks, serrated large-scallop rim, beaded table ring. Very rare. Boston & Sandwich Glass Co. 1830-1850. 1 3/8" H, 2 3/8" x 3 3/8". *Very good condition overall with two moderate bruises and a few minor flakes to the rim. Having a small burst bubble to the rim, as made.*

**Literature:** Neal - Pressed Glass Salt Dishes of the Lacy Period, p. 216.

**Provenance:** From the collection of Doug Reed, Maplewood, NJ.

**Estimate:** 200.00 - 300.00    **Price Realized:** 268.88



**Lot 372**

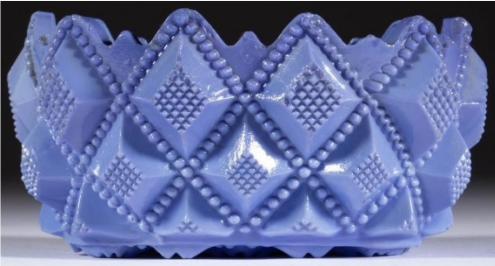
**OL-14 STAR IN DIAMOND OVAL PRESSED OPEN SALT,**

lavender/medium amethyst, scalloped high-point rim. Extremely rare. Probably Boston & Sandwich Glass Co. 1830-1850. 1 5/8" H, 2 1/4" x 3 3/8". *Outstanding condition, three points very lightly tipped, two inner rim chips along with some minor flaking/mold roughness and a hint of interior residue.*

**Literature:** Neal - Pressed Glass Salt Dishes of the Lacy Period, p. 218. Parallels Spillman - Corning, p. 186, fig. 710, and color Plate Eight.

**Provenance:** From the collection of Doug Reed, Maplewood, NJ. Jeffrey S. Evans (T/A GVA), 9/25/2004, lot 565. Ex-collection of Dr. and Mrs. Oscar Hollander (retains collection label). Richard A. Bourne Co., Inc., 5/18/1974, lot 619. Ex-collection of Mr. and Mrs. Kenneth D. Wakefield.

**Estimate:** 200.00 - 300.00    **Price Realized:** 388.38



**Lot 373**

**OL-15 BEADED STRAWBERRY DIAMOND OVAL PRESSED OPEN SALT,**

opaque light violet blue with some interior mottling, high and low point rim. Very rare. Boston & Sandwich Glass Co. 1830-1850. 1 3/4" H, 2 1/4" x 3 1/2". *Proof. Having some expected scattered mold roughness, as made.*

**Literature:** Neal - Pressed Glass Salt Dishes of the Lacy Period, p. 219.

**Provenance:** From the collection of Doug Reed, Maplewood, NJ.

**Estimate:** 400.00 - 600.00    **Price Realized:** 717.00



**Lot 374**

**OL-15 BEADED STRAWBERRY DIAMOND OVAL PRESSED OPEN SALT,**

medium fiery opalescent with excellent pooling, high and low point rim. Rare. Boston & Sandwich Glass Co. 1830-1850. 1 3/4" H, 2 1/8" x 3 1/4". *Excellent condition with a few rim points tipped.*

**Literature:** Neal - Pressed Glass Salt Dishes of the Lacy Period, p. 219. Parallels Barlow/Kaiser - The Glass Industry in Sandwich, Vol. 1, p. 280, fig. 1443.

**Provenance:** From the collection of Doug Reed, Maplewood, NJ.

**Estimate:** 200.00 - 300.00    **Price Realized:** 418.25



**Lot 375**

**OL-17 DIAMOND STAR AND SCROLL OVAL PRESSED OPEN SALT,**

medium amethyst, complex shaped rim, serrated base edge, very thick and heavy. Extremely rare. Possibly Boston & Sandwich Glass Co. 1830-1850. 1 3/4" H, 2 3/8" x 3 1/2". *Excellent condition with scattered high-point roughness/nicking, having a small chip to the top of the base.*

**Literature:** Neal - Pressed Glass Salt Dishes of the Lacy Period, p. 222. Spillman - Corning, p. 187, fig. 717. Like Bourne - The William J. Elsholz Collection, Vol. II, p. 274, lot 1014.

**Provenance:** From the collection of Doug Reed, Maplewood, NJ.

**Estimate:** 300.00 - 500.00    **Price Realized:** 239.00



**Lot 376**

**OO-1 OCTAGON OBLONG PRESSED OPEN SALT,**

brilliant deep amethyst (not listed in Neal), shaped rim, sunburst base. Extremely rare. Boston & Sandwich Glass Co. 1830-1850. 1 5/8" H, 2 3/8" x 3 3/8". *Nearly proof with a few scattered minor flakes to the base edge and underside of the base.*

**Literature:** Neal - Pressed Glass Salt Dishes of the Lacy Period, p. 165. Spillman - Corning, p. 188, fig. 724. Parallels Barlow/Kaiser - The Glass Industry in Sandwich, Vol. 1, p. 289, fig. 1471.

**Provenance:** From the collection of Doug Reed, Maplewood, NJ.

**Estimate:** 200.00 - 300.00    **Price Realized:** 298.75



**Lot 377**

**OO-1 OCTAGON OBLONG PRESSED OPEN SALT,**

red amber, shaped rim, sunburst base. Very rare. Boston & Sandwich Glass Co. 1835-1850. 1 5/8" H, 2 3/8" x 3 1/4". *Proof. Having some expected light roughness to the rim and base edge, a minor underfill to one side of the rim, all as made.*

**Literature:** Neal - Pressed Glass Salt Dishes of the Lacy Period, p. 165. Spillman - Corning, p. 188, fig. 723. Parallels Barlow/Kaiser - The Glass Industry in Sandwich, Vol. 1, p. 289, fig. 1471.

**Provenance:** Collection of Doug Reed, Maplewood, NJ. Collector's Sales and Services, 9/27/1994, lot 84. Ex-collection of Gladys W. and Paul C. Richards (retains collection label).

**Estimate:** 100.00 - 200.00    **Price Realized:** 328.63



**Lot 378**

**OP-1A CORNUCOPIA AND SHIELD PRESSED OPEN SALT,**

colorless, raised on four paw feet. Rare. Boston & Sandwich Glass Co. 1835-1845. 2" H, 2 1/2" x 3 3/8". *Excellent condition overall with a small sliver chip and expected flaking/roughness to the interior of the rim, a small chip to the overhanging edge.*

**Literature:** Barlow/Kaiser - The Glass Industry in Sandwich, Vol. 1, p. 281, fig. 1445. Literature: Neal - Pressed Glass Salt Dishes of the Lacy Period, p. 247.

**Provenance:** From the collection of Doug Reed, Maplewood, NJ.

**Estimate:** 80.00 - 120.00    **Price Realized:** 83.65



**Lot 379**

**OP-2B STRAWBERRY DIAMOND OVAL PEDESTAL PRESSED OPEN SALT,**

colorless, smooth top rim, raised on four paw feet, 30 rays under base. Rare. Boston & Sandwich Glass Co. 1835-1845. 2" H, 2 3/8" x 3 1/4". *Nearly proof with a sliver chip to the interior of the rim. Having some minor roughness to the interior of the rim, as made.*

**Literature:** Neal - Pressed Glass Salt Dishes of the Lacy Period, p. 251. Spillman - Corning, p. 190, fig. 735. Like Bourne - The William J. Elsholz Collection, Vol. III, p. 272, lots 1022, 1023. Parallels Barlow/Kaiser - The Glass Industry in Sandwich, Vol. 1, p. 281, fig. 1444.

**Provenance:** From the collection of Doug Reed, Maplewood, NJ.

**Estimate:** 80.00 - 120.00    **Price Realized:** 59.75



**Lot 380**

**OP-2C STRAWBERRY DIAMOND WITH PAW FEET OVAL PEDESTAL PRESSED OPEN SALT,**

colorless shading to strong fiery opalescent at base, scallop rim, five-toe paws with claws, 27 rays under base. Very rare. Boston & Sandwich Glass Co. 1835-1845. 2" H, 2 3/8" x 3 3/8". *Excellent condition overall with a few flakes to the rim, a small chip to the edge of the base plateau.*

**Literature:** Neal - Pressed Glass Salt Dishes of the Lacy Period, p. 252. Parallels Barlow/Kaiser - The Glass Industry in Sandwich, Vol. 1, p. 281, fig. 1444.

**Provenance:** From the collection of Doug Reed, Maplewood, NJ.

**Estimate:** 100.00 - 200.00    **Price Realized:** 179.25



**Lot 381**

**OP-4 OVAL PEDESTAL PRESSED OPEN SALT,**

cobalt blue, shaped rim. Very rare. France. 1835-1845. 2 1/8" H, 2 1/8" x 3 5/8". *Nearly proof with a couple of small chips to the edge of the foot.*

**Literature:** Neal - Pressed Glass Salt Dishes of the Lacy Period, p. 254.

**Provenance:** From the collection of Doug Reed, Maplewood, NJ.

**Estimate:** 50.00 - 100.00    **Price Realized:** 227.05



**Lot 382**

**OP-8 VARIANT DAISY AND SHELL OVAL PEDESTAL PRESSED OPEN SALT,**

medium blue, shaped rim with edge shells having interior ribbing, underside of foot with diamonds instead of squares. Probably very rare. Possibly New England area. 1835-1850. 1 7/8" H, 2" x 3 1/4". *Excellent condition overall with one rim point with a small loss. Having some expected mold roughness, as made.*

**Literature:** Parallels Neal - Pressed Glass Salt Dishes of the Lacy Period, p. 258.

**Provenance:** From the collection of Doug Reed, Maplewood, NJ.

**Estimate:** 100.00 - 200.00    **Price Realized:** 239.00



**Lot 383**

**UNLISTED OP DIAMOND AND FAN PRESSED OPEN SALT,**

medium amethyst, shaped rim with a pair of fans on each side with a single strawberry diamond below with flanking foliate blades, ovoid threaded foot with raised diamonds to the underside. Probably rare or extremely rare. Possibly New England area. 1835-1850. 1 3/4" H, 2 1/4" x 3 3/8". *Excellent condition overall with some minor flaking to the rim and base edge. Rim having a couple of fins, as made.*

**Provenance:** From the collection of Doug Reed, Maplewood, NJ.

**Estimate:** 100.00 - 200.00    **Price Realized:** 507.88



**Lot 384**

**OP-15 VARIANT OVAL PEDESTAL PRESSED OPEN SALT,**

amethyst, shaped rim and foot with a smaller pendant to one side, unlisted variation without prisms to interior of foot. Probably extremely rare. Unknown origin. 1830-1850. 1 5/8" H, 2" x 3 1/8" rim, 1 3/8" x 2" foot. *Excellent condition with a couple of flakes to the rim, a few scattered flakes to the edge of the foot.*

**Literature:** Parallels Neal - Pressed Glass Salt Dishes of the Lacy Period, p. 265.

**Provenance:** From the collection of Doug Reed, Maplewood, NJ.

**Estimate:** 200.00 - 300.00    **Price Realized:** 358.50



**Lot 385**

**OP-17 OVAL PEDESTAL PRESSED OPEN SALT,**

cobalt blue, complex scrolled rim, raised on four splayed feet. Very rare. Possibly Boston & Sandwich Glass Co. 1830-1845. 1 7/8" H, 2 1/2" x 3 1/2". *Having a sizeable crack across the body and having overall high-point roughness with some scattered flaking, feet having roughness with one having a chip.*

**Literature:** Neal - Pressed Glass Salt Dishes of the Lacy Period, p. 267.

**Provenance:** From the collection of Doug Reed, Maplewood, NJ.

**Catalogue Note:** This is the first example of this salt we have sold.

**Estimate:** 80.00 - 120.00    **Price Realized:** 131.45



**Lot 386**

**OP-17 OVAL PEDESTAL PRESSED OPEN SALT,**

fiery opalescent, complex scrolled rim, raised on four splayed feet. Rare. Possibly Boston & Sandwich Glass Co. 1830-1845. 2" H, 2 5/8" x 3 1/2". *Very good condition overall with a moderate to sizeable shallow chip to one side of the rim and having only a minor effect on the profile, a few additional flakes to the rim, one foot having a small chip and having overall high-point roughness.*

**Literature:** Neal - Pressed Glass Salt Dishes of the Lacy Period, p. 267. Spillman - Corning, p. 190, fig. 739.

**Provenance:** From the collection of Doug Reed, Maplewood, NJ.

**Estimate:** 80.00 - 120.00    **Price Realized:** 59.75





**Lot 387**

**PE-1 PROVIDENCE MARKED PRESSED OPEN SALT,**

colorless, eagle-headed shield on each end, "PROVIDENCE" in base, raised on four scrolled feet. Very rare. Providence Flint Glass Co. 1835-1850. 2 1/4" H, 2 3/8" x 3 1/8". *Proof. Having some roughness to the tips of the feet, having two underfills at the rim, all as made.*

**Literature:** Neal - Pressed Glass Salt Dishes of the Lacy Period, p. 305. Spillman - Corning, p. 191, fig. 743. Wilson - American Glass, vol. 1, p. 347, fig. 440.

**Provenance:** From the collection of Doug Reed, Maplewood, NJ.

**Estimate:** 100.00 - 200.00    **Price Realized:** 239.00



**Lot 388**

**PE-1A UNMARKED PROVIDENCE PRESSED OPEN SALT,**

cobalt blue, eagle-headed shield on each end, raised on four scroll feet. Unique. Providence Flint Glass Co. 1830-1845. 2 1/4" H, 2 1/2" x 3 1/8". *One entire corner reattached, otherwise only some minor flakes/mold roughness.*

**Literature:** Neal - Pressed Glass Salt Dishes of the Lacy Period, p. 306.

**Provenance:** From the collection of Doug Reed, Maplewood, NJ. Jeffrey S. Evans & Associates, 1/27/2017, lot 737.

**Estimate:** 200.00 - 300.00    **Price Realized:** 215.10



**Lot 389**

**PO PEACOCK EYE OVAL PRESSED OPEN SALTS, LOT OF 2,**

colorless, comprising a PO-5 and a PO-6 example. Scarce and probably rare. Boston & Sandwich Glass Co. 1830-1840. 1 1/2" H, 2 1/2" x 3 1/2". *PO-5 having a horizontal check across one scallop; PO-6 having scattered chipping and flaking with the table ring having some losses. PO-5 having a burst bubble to the rim, as made.*

**Provenance:** Collection of Doug Reed, Maplewood, NJ.

**Estimate:** 80.00 - 120.00    **Price Realized:** 47.80



**Lot 390**

**PO-1A PEACOCK EYE OVAL PRESSED OPEN SALT,**

clam water, scalloped rim, serrated table ring. Very rare. Boston & Sandwich Glass Co. 1830-1840. 1 1/2" H, 2 1/2" x 3 1/2". *Very good condition overall with a single chip to one rim scallop, a small chip and bruise to the table ring.*

**Literature:** Neal - Pressed Glass Salt Dishes of the Lacy Period, p. 275.

**Provenance:** From the collection of Doug Reed, Maplewood, NJ.

**Estimate:** 200.00 - 300.00    **Price Realized:** 215.10



**Lot 391**

**PO-4 PEACOCK EYE OVAL PRESSED OPEN SALT,**

light green, scalloped rim, 28-ray base. Extremely rare. Boston & Sandwich Glass Co. 1830-1840. 1 1/2" H, 3 1/2" x 2 5/8".

*Nearly proof with a single chip to the rim.*

**Literature:** Neal - Pressed Glass Salt Dishes of the Lacy Period, p. 282.

**Provenance:** From the collection of Doug Reed, Maplewood, NJ.

**Estimate:** 800.00 - 1200.00    **Price Realized:** 896.25



**Lot 392**

**PO-6 PEACOCK EYE OVAL PRESSED OPEN SALT,**

deep opalescent medium blue with a smoky swirl in one eye, scallop rim, eight-point star base. Extremely rare. Boston & Sandwich Glass Co. 1830-1845. 1 1/2" H, 2 7/8" x 3 3/4". *Very good to excellent condition overall with some scattered flaking/chipping to the base edge. Some minor instances of mold roughness, as made.*

**Literature:** Neal - Pressed Glass Salt Dishes of the Lacy Period, p. 284. Barlow/Kaiser - The Glass Industry in Sandwich, Vol. 1, p. 289, fig. 1469a. Like Bourne - The William J. Elsholz Collection, Vol. II, p. 236, lot 926.

**Provenance:** From the collection of Doug Reed, Maplewood, NJ.

**Estimate:** 400.00 - 600.00    **Price Realized:** 448.13



**Lot 393**

**PO-6A PEACOCK EYE OVAL PRESSED OPEN SALT,**

medium blue, scallop rim, plain table ring. Rare. Boston & Sandwich Glass Co. 1830-1845. 1 1/2" H, 3" x 3 7/8". *Nearly proof with a single chip and a few flakes to the base edge. Having a minor open bubble to the rim, as made.*

**Literature:** Neal - Pressed Glass Salt Dishes of the Lacy Period, p. 285.

**Provenance:** From the collection of Doug Reed, Maplewood, NJ.

**Estimate:** 800.00 - 1200.00    **Price Realized:** 478.00



**Lot 394**

**RP-1 FLORAL ROUND PEDESTAL PRESSED OPEN SALT AND UNDERTRAY,**

both in strongly swirled silvery opaque powder to medium blue, salt with an intricate foliate chain-top rim and inner rope rings, raised on a 12-scallop foot, accompanied by a matching Lee/Rose No. 85 cup plate/undertray. Both extremely rare. Boston & Sandwich Glass Co. 1835-1850. 2" H, 3 1/8" and 3 3/8" D. *Salt in very good condition with the rim having three sliver chips, base having some scattered light flaking; underplate having a few minor flakes to the underside of the edge.*

**Literature:** Neal - Pressed Glass Salt Dishes of the Lacy Period, p. 348. Parallels Barlow/Kaiser - The Glass Industry in Sandwich, Vol. 1, p. 285, fig. 1460a; and Spillman - Corning, p. 193, fig. 755, and color Plate Nine.

**Provenance:** From the collection of Doug Reed, Maplewood, NJ.

**Estimate:** 1000.00 - 2000.00    **Price Realized:** 1553.50



**Lot 395**

**RP-3 ROUND FLORAL PRESSED OPEN SALT,**

slightly mottled silvery opaque powder to violet blue, intricate foliate chain-top rim with inner rope rings, 12-scallop foot. Extremely rare. Boston & Sandwich Glass Co. 1835-1850. 2" H, 3 1/8" D rim, 2" D foot. *Good condition overall with some scattered flaking/shallow chipping to the underside of the rim, a couple of flakes to the medial base, a chip to the underside of the bowl. Having overall roughness, as made.*

**Literature:** Neal - Pressed Glass Salt Dishes of the Lacy Period, p. 350. Spillman - Corning, p. 193, fig. 755, and color Plate Nine. Like Bourne - The William J. Elsholz Collection, Vol. III, p.401, lot 1506. Parallels Barlow/Kaiser - The Glass Industry in Sandwich, Vol. 1, p. 285, fig. 1460a.

**Provenance:** From the collection of Kenneth and Bernice Simpson, Acton, MA.

**Estimate:** 100.00 - 200.00    **Price Realized:** 167.30



**Lot 396**

**SC-1(A) VARIANT PEACOCK EYE MEDALLION AND ACANTHUS LEAF SCROLL**

**PRESSED OPEN SALT**, cobalt blue, raised on four feet. Base variation having the 22 rays coming to a raised star-like point in the center, tiny nipple to underside of each foot. Unique. Providence Flint Glass Co. 1835-1850. 1 7/8" H, 2" x 3 1/4". *Proof. Having some expected mold roughness.*

**Literature:** Parallels Neal - Pressed Glass Salt Dishes of the Lacy Period, p. 386.

**Provenance:** From the collection of Doug Reed, Maplewood, NJ.

**Estimate:** 800.00 - 1200.00    **Price Realized:** 1553.50



**Lot 397**

**SD-2 STRAWBERRY DIAMOND AND FAN SCALLOP FAN PRESSED OPEN SALT,**

deep cobalt blue, fans with serrated points, on four hairy paw feet. Very rare. Possibly Boston & Sandwich Glass Co. 1835-1850. 2" H, 2 1/4" x 3 3/8". *Virtually proof with some minor mold roughness, as made.*

**Literature:** Neal - Pressed Glass Salt Dishes of the Lacy Period, p. 437.

**Provenance:** From the collection of Doug Reed, Maplewood, NJ.

**Estimate:** 500.00 - 800.00    **Price Realized:** 448.13



**Lot 398**

**SD-2 STRAWBERRY DIAMOND SOFA PRESSED OPEN SALT,**

deep fiery opalescent light blue with interior mottling, serrated-fan rim, raised on four hairy-paw feet. Extremely rare. Possibly Boston & Sandwich Glass Co. 1827-1840. 2" H, 2 1/4" x 3 3/8". *Excellent condition overall with a sliver chip and a couple flakes to the rim, a chip to the side of one edge column, a chip to one foot.*

**Literature:** Neal - Pressed Glass Salt Dishes of the Lacy Period, p. 437.

**Provenance:** From the collection of Doug Reed, Maplewood, NJ.

**Estimate:** 100.00 - 200.00    **Price Realized:** 328.63



**Lot 399**

**SD-4A WAVED STRAWBERRY DIAMOND PRESSED OPEN SALT,**

brilliant cobalt blue, even-scallop rim with narrow flat space between each scallop. Rare. Boston & Sandwich Glass Co. 1828-1840. 2" H, 2 1/4" x 3 1/8". *Nearly proof with a single chip to one base corner.*

**Literature:** Neal - Pressed Glass Salt Dishes of the Lacy Period, p. 440. Barlow/Kaiser - The Glass Industry in Sandwich, Vol. 1, p. 280, fig. 1442b. Spillman - Corning, p. 195, fig. 763.

**Provenance:** From the collection of Doug Reed, Maplewood, NJ.

**Catalogue Note:** This is the second example of this salt we have sold, suggesting it is much rarer than designated by Neal.

**Estimate:** 100.00 - 200.00    **Price Realized:** 328.63



**Lot 400**

**SD-5A STRAWBERRY DIAMOND PRESSED OPEN SALT,**

dark brown amber, scallop-and-point rim. Extremely rare. New England, possibly New England Glass Co. 1827-1840. 2" H, 2 1/8" x 2 7/8". *Having a crack running from the rim and to the base; having expected light flaking and overall mold roughness, roughness as made.*

**Literature:** Neal - Pressed Glass Salt Dishes of the Lacy Period, p. 447. Like Bourne - The William J. Elsholz Collection, Vol. III, pp. 400 and 403, lot 1521.

**Provenance:** From the collection of Doug Reed, Maplewood, NJ.

**Estimate:** 50.00 - 100.00    **Price Realized:** 191.20



**Lot 401**

**SD-7 STRAWBERRY DIAMOND PRESSED OPEN SALT,**

medium amber, scallop and point rim. Rare. Boston & Sandwich Glass Co. 1827-1840. 2" H, 2 1/8" x 2 7/8". *Excellent condition overall with some expected scattered minor flaking/roughness, one foot having a loss to one side.*

**Literature:** Neal - Pressed Glass Salt Dishes of the Lacy Period, p. 449.

**Provenance:** From the collection of Doug Reed, Maplewood, NJ.

**Estimate:** 200.00 - 300.00    **Price Realized:** 298.75



**Lot 402**

**SD-7 STRAWBERRY DIAMOND PRESSED OPEN SALT,**

yellow green, scallop-and-point rim. Rare. Boston & Sandwich Glass Co. 1827-1840. 2" H, 2 1/8" x 2 7/8". *Proof. Having scattered expected mold roughness, as made.*

**Literature:** Neal - Pressed Glass Salt Dishes of the Lacy Period, p. 449. Barlow/Kaiser - The Glass Industry in Sandwich, Vol. 1, p. 279, fig. 1439. Parallels Spillman - Corning, p. 195, fig. 765.

**Provenance:** From the collection of Doug Reed, Maplewood, NJ.

**Estimate:** 200.00 - 300.00    **Price Realized:** 328.63



**Lot 403**

**SD-7 STRAWBERRY DIAMOND PRESSED OPEN SALT,**

medium sapphire blue, scallop-and-point rim. Scarce. Boston & Sandwich Glass Co. 1827-1840. 1 7/8" H, 2 1/8" x 3". *Very good condition overall with a couple of sliver chips and flakes to the rim, having overall roughness with some flaking to the edges and base corners.*

**Literature:** Neal - Pressed Glass Salt Dishes of the Lacy Period, p. 449. Parallels Barlow/Kaiser - The Glass Industry in Sandwich, Vol. 1, p. 279, fig. 1439.

**Provenance:** From the collection of Doug Reed, Maplewood, NJ.

**Estimate:** 80.00 - 120.00    **Price Realized:** 227.05



**Lot 404**

**SD-9 STRAWBERRY DIAMOND PRESSED OPEN SALT,**

black amethyst, scallop and point rim. Extremely rare. Boston & Sandwich Glass Co. 1827-1840. 2" H, 2 1/8" x 2 7/8". *Excellent condition overall with some expected scattered flaking/roughness, a single chip to the rim, a chip to the base edge, some flaking to some corner columns.*

**Literature:** Neal - Pressed Glass Salt Dishes of the Lacy Period, p. 449.

**Provenance:** From the collection of Doug Reed, Maplewood, NJ.

**Estimate:** 400.00 - 600.00    **Price Realized:** 507.88



**Lot 405**

**SD-9 STRAWBERRY DIAMOND PRESSED OPEN SALT,**

brilliant lavender/violet blue, scallop-and-point rim. Rare. Boston & Sandwich Glass Co. 1827-1840. 2" H, 2" x 2 3/4". *Excellent condition overall with a few flakes to the rim; a sliver chip to the underside of the base. Having expected overall mold roughness, as made.*

**Literature:** Neal - Pressed Glass Salt Dishes of the Lacy Period, p. 452. Parallels Barlow/Kaiser - The Glass Industry in Sandwich, Vol. 1, p. 280, fig. 1440.

**Provenance:** From the collection of Doug Reed, Maplewood, NJ.

**Estimate:** 200.00 - 300.00    **Price Realized:** 328.63



**Lot 406**

**SD-9 STRAWBERRY DIAMOND PRESSED OPEN SALT,**

deep cobalt blue, scallop-and-point rim, very thick base. Scarce. Boston & Sandwich Glass Co. 1827-1840. 2" H, 2" x 2 3/4". *Excellent condition overall with some expected scattered flaking and mold roughness, most as made.*

**Literature:** Neal - Pressed Glass Salt Dishes of the Lacy Period, p. 252.

**Provenance:** From the collection of Doug Reed, Maplewood, NJ.

**Estimate:** 100.00 - 200.00    **Price Realized:** 298.75



**Lot 407**

**SD-10 STRAWBERRY DIAMOND PRESSED OPEN SALT,**

unlisted cobalt blue, scallop-and-point rim, very thick base. Probably extremely rare. Boston & Sandwich Glass Co. 1827-1840. 2" H, 2" x 2 3/4".

*Excellent condition overall with some expected scattered flaking/roughness.*

**Literature:** Neal - Pressed Glass Salt Dishes of the Lacy Period, p. 453.

**Provenance:** From the collection of Doug Reed, Maplewood, NJ.

**Estimate:** 200.00 - 300.00    **Price Realized:** 537.75



**Lot 408**

**SD-15 STRAWBERRY DIAMOND PRESSED OPEN SALT,**

fiery opalescent, scallop-and-point rim. Very rare. Boston & Sandwich Glass Co. and others. 1827-1840. 2" H, 2" x 2 7/8". *Good condition overall with scattered chipping to the rim and a couple to the columns at the edges. Overall mold roughness, as made.*

**Literature:** Neal - Pressed Glass Salt Dishes of the Lacy Period, p. 458.

**Provenance:** From the collection of Doug Reed, Maplewood, NJ.

**Estimate:** 80.00 - 120.00    **Price Realized:** 107.55



**Lot 409**

**UNLISTED SD-18 STRAWBERRY DIAMOND PRESSED OPEN SALT,**

colorless, sides are laid out like SD-1 with upper and lower fans, pattern is a combination of SD-3 Star Diamonds and SD-9 Strawberry Diamonds, scallop and point side rims like SD-12, scrolled upper corners and large rope ends to left like SD-1, scrolled feet and skirt like CN-1a, base like the center of WN-1, ends consist of four diamonds with a fan in each corner. Unknown rarity, probably extremely rare. Possibly Boston & Sandwich Glass Co. 1830-1840. 2 1/4" H, 2" x 3 3/8". *Nearly proof with a couple of flakes to the rim, some feet with some minor flaking/roughness to the backside not affecting the profile.*

**Provenance:** From the collection of Doug Reed, Maplewood, NJ.

**Estimate:** 500.00 - 800.00    **Price Realized:** 418.25



**Lot 410**

**SH-1 SLEIGH-SHAPED PRESSED OPEN SALT,**

colorless, scrolled rim, hairpin front end, rayed base, resting on two runners. Extremely rare. Possibly Boston & Sandwich Glass Co. 1835-1850. 2 1/4" H, 1 7/8" x 3 3/8". *Excellent condition overall with the rim having a flake and moderate bruise and some scattered flaking/chipping to the corner scrolls and runners.*

**Literature:** Neal - Pressed Glass Salt Dishes of the Lacy Period, p. 425. Wilson - American Glass, Vol. 1, p. 352, fig. 452. Spillman - Corning, p. 196, fig. 770. Lee - Sandwich Glass, pl. 74, fig. 9. Like Bourne - The William J. Elsholz Collection, Vol. III, pp. 414, 415, lot 1561.

**Provenance:** From the collection of Doug Reed, Maplewood, NJ. Jeffrey S. Evans & Associates, 5/21/2014, lot 462. Ex-collection of the late Lois S. Hirschmann, Marion, MA (retains collection label). Richard A. Bourne Co., Inc., 11/17/1987, lot 1578. Ex-collection of William J. Elsholz. Katherine Woodward, 3/26/1954.

**Estimate:** 1000.00 - 2000.00    **Price Realized:** 6572.50



**Lot 411**

**SL SHELL AND HAIRPIN PRESSED OPEN SALTS, LOT OF TWO,**

colorless, comprising a SL-14A and a SL-14B example. Very rare and rare. Possibly Boston & Sandwich Glass Co. 1835-1850. 1 5/8" H, 2" x 3 1/8". *SL-14B having a loss to one foot and some scattered flaking/roughness; SL-14A in excellent condition having some flaking/roughness to the rims and edges, having a small chip to one top scroll.*

**Literature:** Neal - Pressed Glass Salt Dishes of the Lacy Period, pp. 419, 420.

**Provenance:** Collection of Doug Reed, Maplewood, NJ.

**Estimate:** 50.00 - 100.00    **Price Realized:** 119.50



**Lot 412**

**SL-1 SHELL PRESSED OPEN SALT,**

cobalt blue, shaped rim. Very rare. Possibly Boston & Sandwich Glass Co. 1835-1850. 1 3/4" H, 2" x 3". *Proof. Having some expected scattered mold roughness, as made.*

**Literature:** Neal - Pressed Glass Salt Dishes of the Lacy Period, p. 403. Parallels Barlow/Kaiser - The Glass Industry in Sandwich, Vol. 1, p. 284, fig. 1457.

**Provenance:** From the collection of Doug Reed, Maplewood, NJ.

**Estimate:** 80.00 - 120.00    **Price Realized:** 155.35



**Lot 413**

**SL-2A SHELL PRESSED OPEN SALT,**

medium honey amber, shaped rim. Very rare. Possibly Boston & Sandwich Glass Co. 1835-1850. 1 5/8" H, 2" x 3". *Nearly proof with a single sliver chip to the interior of the rim not affecting the profile, some minor roughness and a few flakes to the base edge.*

**Literature:** Neal - Pressed Glass Salt Dishes of the Lacy Period, p. 406. Like Bourne - The William J. Elsholz Collection, Vol. III, p. 400, lot 1508. Parallels Barlow/Kaiser - The Glass Industry in Sandwich, Vol. 1, p. 284, fig. 1457.

**Provenance:** From the collection of Doug Reed, Maplewood, NJ.

**Estimate:** 100.00 - 200.00    **Price Realized:** 155.35



**Lot 414**

**SL-10 PRESSED OPEN SALT,**

unlisted bottle green, raised on four scrolled feet, base with central waffle pattern within a ring, surrounded by thick rays. Possibly unique. Possibly Pittsburgh area. 1830-1845. 1 3/4" H, 2" x 3 1/8". *Having a crack running from the rim and into base, having a couple of chips to base edge.*

**Literature:** Neal - Pressed Glass Salt Dishes of the Lacy Period, p. 414.

**Provenance:** From the collection of Doug Reed, Maplewood, NJ.

**Catalogue Note:** This is the first example in this color we have sold.

**Estimate:** 50.00 - 100.00    **Price Realized:** 298.75



**Lot 415**

**SL-12 SHELL PRESSED OPEN SALT,**

brilliant peacock green, on four scroll feet. Color unlisted in Neal, extremely rare. Possibly Boston & Sandwich Glass Co. 1835-1850. 1 5/8" H, 1 3/4" x 3 1/8". *Very good condition overall with scattered flaking/chipping to the rims/edges, one foot having a small loss.*

**Literature:** Neal, p. 416. The Acorn, Volume 15, 2008/2009, p. 71, "Pressed Glass Salt Dishes of the Lacy Period 1825-1850: An Addendum". Like Bourne - The William J. Elsholz Collection, Vol. III, p. 400, lot 1515, which was catalogued as unique.

**Provenance:** From the collection of Doug Reed, Maplewood, NJ.

**Estimate:** 100.00 - 200.00    **Price Realized:** 328.63



**Lot 416**

**SL-12 SHELL PRESSED OPEN SALT,**

unlisted honey amber, on four scroll feet. Extremely rare. Possibly Boston & Sandwich Glass Co. 1835-1850. 1 3/4" H, 1 3/4" x 3 1/8". *Very good condition overall with overall mold roughness/flaking to the rims/edges.*

**Literature:** Neal - Pressed Glass Salt Dishes of the Lacy Period, p. 416.

**Provenance:** From the collection of Doug Reed, Maplewood, NJ.

**Estimate:** 100.00 - 200.00    **Price Realized:** 328.63



**Lot 417**

**SL-14A SHELL AND HAIRPIN PRESSED OPEN SALT,**

fiery opalescent, raised on four scrolled feet. Very rare. Possibly Boston & Sandwich Glass Co. 1835-1850. 1 5/8" H, 2" x 3 1/8". *Very good condition overall with some scattered minor flaking/roughness to the top scrolls and the feet; one top scroll having a loss to the edge.*

**Literature:** Neal - Pressed Glass Salt Dishes of the Lacy Period, p. 419.

**Provenance:** From the collection of Doug Reed, Maplewood, NJ.

**Catalogue Note:** This is the second example of this salt we have sold.

**Estimate:** 80.00 - 120.00    **Price Realized:** 239.00



**Lot 418**

**SL-16 SHELL AND STAR PRESSED OPEN SALT,**

unlisted deep cobalt blue, tiny diamond point base, on four scroll feet. Probably extremely rare. Possibly Boston & Sandwich Glass Co. 1830-1850. 1 5/8" H, 2" x 3 1/8". *Nearly proof with some light flaking to the backside of the feet.*

**Literature:** Neal - Pressed Glass Salt Dishes of the Lacy Period, p. 422.

**Provenance:** From the collection of Doug Reed, Maplewood, NJ.

**Estimate:** 500.00 - 800.00    **Price Realized:** 358.50



**Lot 419**

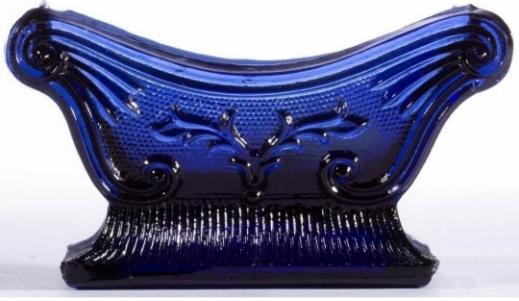
**SL-18 SHELL PEDESTAL PRESSED OPEN SALT,**

colorless, ornate shaped rim, acorn end panels, raised on a conforming pedestal with scrolling feet, prisms to underside. Extremely rare. Possibly Boston & Sandwich Glass Co. 1835-1850. 2 7/8" H, 2 1/4" x 3 3/8". *One end rim with loss to top of shell, otherwise only a shallow chip to one corner of body and minor mold roughness.*

**Literature:** Neal - Pressed Glass Salt Dishes of the Lacy Period, p. 424. Like Bourne - The William J. Elsholz Collection, Vol. III, pp. 367 and 369, lot 1366.

**Provenance:** From the collection of Doug Reed, Maplewood, NJ. Jeffrey S. Evans & Associates, 1/27/2017, lot 737.

**Estimate:** 200.00 - 300.00    **Price Realized:** 358.50



**Lot 420**

**SN-1 STAG'S HORN PRESSED OPEN SALT,**

deep cobalt blue, 26 rays under base. Scarce. Possibly Boston & Sandwich Glass Co. 1835-1850. 1 5/8" H, 1 7/8" x 3 1/8". *Very good condition overall with an elongated sliver chip to the base edge and a moderate chip to the underside of the base, a single pattern flake.*

**Literature:** Neal - Pressed Glass Salt Dishes of the Lacy Period, p. 427. Spillman - Corning, p. 198, fig. 780.

**Provenance:** From the collection of Doug Reed, Maplewood, NJ. Skinner, Inc., 3/9/2002, lot 174. Ex-collection of Frank E. Jedlicka (retains collection label).

**Estimate:** 80.00 - 120.00    **Price Realized:** 71.70



**Lot 421**

**SN-1A AND SN-1B STAG'S HORN PRESSED OPEN SALTS,**

**LOT OF TWO,** amber, each being rayed under the base. Rare and probably Extremely rare. Possibly Boston & Sandwich Glass Co. 1835-1850. 1 5/8" H, 1 7/8" x 3 1/8". *Each in very good condition with scattered flaking and chipping to the rims, corners, and/or base points.*

**Provenance:** Collection of Doug Reed, Maplewood, NJ.

**Estimate:** 50.00 - 100.00    **Price Realized:** 71.70



**Lot 422**

**SN-1B STAG'S HORN PAIR OF PRESSED OPEN SALTS,**

opaque clambroth, each being rayed under the base. Rare. Possibly Boston & Sandwich Glass Co. 1835-1850. 1 5/8" H, 1 7/8" x 3 1/8". *Each having some scattered flaking and chipping to the rims and pattern; one having some light post-production polishing to a portion of the rim; other having a crack to the body.*

**Literature:** Neal - Pressed Glass Salt Dishes of the Lacy Period, p. 429.

**Provenance:** Collection of Doug Reed, Maplewood, NJ.

**Estimate:** 50.00 - 100.00    **Price Realized:** 59.75



**Lot 423**

**WN-1A WAGON PRESSED OPEN SALT,**

colorless, rope rim, raised on four wheels. Extremely rare. Possibly Boston & Sandwich Glass Co. 1830-1845. 2" H, 2" x 3". *Rim is proof, shallow chip to an upper corner on one end, small chip to two lower corners, flake to lower edge on one end and flaking/mold roughness to the interior of two wheels.*

**Literature:** Neal - Pressed Glass Salt Dishes of the Lacy Period, p. 464. Wilson - American Glass, Vol. 1, p. 352, fig. 453.

**Provenance:** From the collection of Doug Reed, Maplewood, NJ. Jeffrey S. Evans & Associates, 5/21/2014, lot 462. Ex-collection of the late Lois S. Hirschmann, Marion, MA (retains collection label). Richard A. Bourne Co., Inc., 11/17/1987, lot 1578. Ex-collection of William J. Elsholz. Katherine Woodward, 3/26/1954.

**Estimate:** 200.00 - 300.00    **Price Realized:** 268.88





**Lot 424**

**ASSORTED PRESSED LACY-ERA GLASS OPEN SALTS, LOT OF FIVE,**

colorless, including a CN-1C, a CN-1A, two BF-1B, and a BS-2. Various makers. 1830-1850. 1 7/8" to 2 1/4" H. Each in very good or excellent condition with each having scattered flaking and/or chipping.

**Provenance:** From the collection of Kenneth and Bernice Simpson, Acton, MA.

**Estimate:** 50.00 - 100.00    **Price Realized:** 167.30



**Lot 425**

**ASSORTED PRESSED LACY-ERA GLASS OPEN SALTS, LOT OF FIVE,**

colorless, comprising an MV-1B, an OL-16, an OO-2, a SN-1C, and a SD-7. Various makers. 1830-1850. 1 1/2" to 2" H. SN and SD having a short crack to one side; remainder in very good to excellent condition with some scattered flaking/chipping.

**Provenance:** From the collection of Kenneth and Bernice Simpson, Acton, MA.

**Estimate:** 50.00 - 80.00    **Price Realized:** 71.70



**Lot 426**

**ASSORTED PRESSED LACY-ERA GLASS OPEN SALTS, LOT OF FIVE,**

colorless, comprising two NE-3, two NE-4, and an EE-1. Various makers. 1830-1850. 2" to 2 1/8" H. *Each in very good condition with each having scattered flaking and chipping, especially to the rim.*

**Provenance:** From the collection of Kenneth and Bernice Simpson, Acton, MA.

**Estimate:** 50.00 - 100.00    **Price Realized:** 107.55



**Lot 429**

**FREE-BLOWN FOOTED OPEN SALT,**

amethyst, applied opal rim and base trim, shallow bowl with everted rim, raised on a single-knop stem and circular foot with faint rough pontil mark. 1800-1840. 2 1/8" H, 2 1/2" D rim, 2 1/2" D foot.

*Undamaged.*

**Provenance:** From the Briggs - Richardson collection, Stephens City, VA.

**Estimate:** 200.00 - 300.00    **Price Realized:** 836.50



**Lot 430**

**PATTERN-MOLDED DIAMOND-QUILT FOOTED OPEN SALT,**

colorless, double-ogee bowl heavily molded with rows of 11 diamonds, raised on a short ribbed stem and applied seven-petal foot with rough pontil mark. Possibly Thomas Cains' South Boston Flint Glass Works or Cains' Glass House. 1800-1830. 3 1/4" H, 2 3/8" D rim, 2 1/8" DOA foot.

*Undamaged.*

**Literature:** Parallels Kaiser - The Glass Industry in South Boston, p. 55, fig. 43.

**Provenance:** From the collection of Kenneth and Bernice Simpson, Acton, MA.

**Estimate:** 100.00 - 200.00    **Price Realized:** 83.65



**Lot 431**

**PATTERN-MOLDED RIB FOOTED OPEN SALT,**

colorless, double-ogee bowl patterned with 14 vertical ribs, raised on a short thick stem and an applied circular foot with a scalloped edge, rough pontil mark. Possibly Midwestern. 1810-1830. 2 3/8" H, 2 1/2" D rim, 2" D foot.

*Undamaged.*

**Provenance:** From the collection of Kenneth and Bernice Simpson, Acton, MA.

**Estimate:** 80.00 - 120.00    **Price Realized:** 71.70