

Jeffrey S. Evans & Associates

Email: info@jeffreysevans.com

Website: www.jeffreysevans.com

Mailing Address:

P.O. Box 2638

Harrisonburg, VA 22801

Gallery Location & Shipping Address:

2177 Green Valley Lane

Mt. Crawford, VA 22841

Formerly Green Valley Auctions, Inc.



All auction information and images that follow are courtesy of Jeffrey S. Evans & Associates and is used here with their permission.

The same information may be found on their website. Only open salt and related lots are shown here for the benefit of open salt collectors. No further use of information or images without permission of Jeffrey S. Evans & Associates.

Open Salts – Jeffrey S. Evans Auction – Jan. 27-28, 2017

Price realized include a 17% Buyer's Premium

Friday, January 27



©Jeffrey S. Evans & Assoc. 2017

Lot 270

PILLAR-MOLDED OPEN SALT OR SWEETMEAT GLASS, brilliant cobalt blue, shallow bowl with eight light ribs and a boldly gauffered and folded rim, raised on a drawn-knop stem and an applied circular foot with a rough pontil mark. Probably England. 1800-1850. 3 1/4" H, 3 1/2" D rim, 2 3/8" D foot. *Undamaged with a minor open bubble to the interior, as made.* Provenance: From a West Coast private collection. Purchased from JSE&A, 9/26/09, lot 98. Ex-collection of Lynn and Gordon Layon (retains label). Purchased from Arman's Absentee Auctions. Exhibition: Huntington (WV) Museum of Art, no. 102, 1993.

Estimate: 100.00 - 200.00

Price Realized: 105.30



©Jeffrey S. Evans & Assoc. 2017

Lot 294

BLOWN-MOLDED GII-18 OPEN SALT, colorless, drawn foot with a Diamond Type VII base, rough pontil mark. Boston & Sandwich Glass Co. 1820-1835. 2 1/4" H, 2 3/4" D rim, 2 1/8" D foot. *Undamaged.* Provenance: From the collection of the late Ken Lyon of Fishers Hill, VA.

Estimate: 100 .00 -200 .00

Price Realized: 210.60



Lot 354

NEW ENGLAND FREE-BLOWN PEDESTAL OPEN SALT WITH ENCAPSULATED AMERICAN COIN, lead glass, cased ruby straight-sided shallow bowl, raised on an applied colorless hollow-knop stem and six-petal foot with rough pontil mark, knop contains an 1859 Indian Head penny. Third quarter 19th century. 2 3/4" H, 3 1/2" D rim, 3" D foot. *Undamaged with expected wear to rim and interior.* Literature: Parallels Wilson - New England Glass, p. 152, fig. 112.

Provenance: From a West Coast private collection. Jeffrey S. Evans (T/A GVA), 5/19/07, lot 148. Ex-collection of Ken Lyon, Fisher's Hill, VA. Ex-collection of Dr. E. R. Eller, Carnegie Museum.

Catalogue Note: Wilson and McKearin both illustrate the same candlestick which features a petal foot and an 1862 Indian Head penny. It is attributed to a New London glasshouse and is in the collection at the Corning Museum of Glass.

Estimate: 500.00 -800 .00

Price Realized: 1053.00



©Jeffrey S Evans & Assoc. 2017

Lot 380

ASSORTED FREE-BLOWN AND BLOWN-MOLDED ARTICLES, LOT OF FIVE, comprising a cobalt blue sweetmeat with beaded eye and plume pattern, folded rim, and pressed base, a cobalt blue 20-rib pan, a colorless pan with applied cobalt blue rim, an aquamarine toy pan with wide folded rim, and a light green hat whimsy, each with rough pontil mark. 19th and 20th century. 1 1/8" to 4 1/4" H, 3 5/8" to 6 1/8" D. *Undamaged, blue pan with interior residue.*
 Provenance: Property from the Dexter Charles Wright estate collection, Ponte Vedra, FL.

Estimate: 80.00 - 120.00

Price Realized: 292.50



©Jeffrey S Evans & Assoc. 2017

Lot 670

ASSORTED PRESSED LACY CHILDREN'S TOY ARTICLES, LOT OF EIGHT, colorless, including an oval bowl, cup and saucer, open compote, and oval dish. Boston & Sandwich Glass Co. and probably others. 1835-1850. 2" H compote, 2" x 3" oval dish. *Waffled plate with a moderate chip to the edge, footed bowl with a chip to the base edge, footed rectangular dish with a moderate chip to the base edge, remainder undamaged with many pieces having mold roughness, as made.*
 Provenance: From the collection of the late Ken Lyon of Fishers Hill, VA.

Estimate: 50.00 - 100.00

Price Realized: 198.90



©Jeffrey S Evans & Assoc. 2017

Lot 682

PRESSED CHILDREN'S TOYS, LOT OF EIGHT, comprising two Vaseline (black lighted) and three colorless U. S. Glass Co. hexagonal candlesticks, a colorless oval compote, and two opalescent scallop-rim compotes. First half 20th century. 1 3/4" to 2 1/8" H. *One Vaseline and colorless candlestick with flake to one base corner, remainder undamaged.*
 Provenance: Property from the Dexter Charles Wright estate collection, Ponte Vedra, FL.

Estimate: 50.00 - 80.00

Price Realized: 93.60



Lot 690a

PATTERN-MOLDED CHECKERED DIAMOND OPEN SALT, colorless non-lead glass, double-ogee bowl with pattern repeated seven times, raised on an applied short plain stem and slopping, irregular foot with rough pontil mark. Probably Amelung's New Bremen Glassmanufactory. 1785-1795. 2 3/4" H, 2 3/8" D rim, 2 1/8" D foot. *Undamaged*. Literature: Wilson - American Glass, vol. 1, p. 68, fig. 4. Provenance: Property from the Dexter Charles Wright estate collection, Ponte Vedra, FL.

Estimate: 500.00 - 800.00
Price Realized: 1989.00



Lot 691

PATTERN-MOLDED RIB PEDESTAL OPEN SALT, powderblue with opalescent bloom, truncated conical bowl with 14 vertical ribs and folded rim, raised on a drawn button-knop stem and applied sapphire blue slopping foot with rough pontil mark. 1800-1850. 3 1/8" H, 2 7/8" D rim, 2 1/8" D foot. *Undamaged*. Provenance: From the collection of the late Ken Lyon of Fishers Hill, VA.

Estimate: 100.00 - 200.00
Price Realized: 128.70



Lot 692

PATTERN-MOLDED RIB FOOTED OPEN SALT, colorless, lead glass, double-ogee bowl molded with 22 vertical ribs swirled slightly to the left at one side of rim, raised on a truncated ribbed stem and an applied circular sloping foot with rough pontil mark. Midwest United States and other regions. 1810-1830. 2 5/8" H, 2 5/8" D rim, 2" D foot. *Undamaged*. Literature: Parallels Wilson - American Glass, vol. 1, p. 192, figs. 173-175, from the Barber and Duckworth collections. Provenance: Property from the Dexter Charles Wright estate collection, Ponte Vedra, FL.

Estimate: 80.00 - 100.00
Price Realized: 81.90



Lot 693

PATTERN-MOLDED DIAMOND QUILT FOOTED OPEN SALT, brilliant cobalt blue, double-ogee bowl molded with rows of 11 diamonds, raised on a short ribbed stem and applied circular sloping foot with rough pontil mark. Midwestern United States and England. 1780-1820. 3" H, 2 1/4" D rim, 2 1/8" D foot. *Moderate chip to the inner rim not affecting the profile, otherwise undamaged.* Literature: Parallels Wilson - American Glass, vol. 1, p. 183, fig. 152.

Provenance: Property from the Dexter Charles Wright estate collection, Ponte Vedra, FL.

Estimate: 50.00 - 80.00

Price Realized: 70.20



Lot 694

PATTERN-MOLDED DIAMOND QUILT FOOTED OPEN SALTS, LOT OF 2, colorless, comprising a double-ogee bowl example and a conical-bowl example, each molded with rows of 12 diamonds, raised on a short ribbed stem and applied circular sloping foot with rough pontil mark. Thomas Cains' South Boston Flint Glass Works or Cains' Glass House, Midwestern United States, and England. 1800-1830. 2 7/8" H, 2 1/4" D rim, and 3 1/4" H, 2 1/2" D rim. *Undamaged.* Literature: Parallels Kaiser - South Boston, p. 55, fig. 43, and Wilson - American Glass, vol. 1, p. 183, fig. 152.

Provenance: From the collection of the late Ken Lyon of Fishers Hill, VA.

Estimate: 80.00 - 120.00

Price Realized: 93.60



Lot 695

ANGLO-IRISH PATTERN-MOLDED, PRESSED, AND CUT OPEN SALT, colorless lead glass, ovoid bowl with 12 molded flutes, laurel-band below the notched rim, raised on a pressed base featuring a short stem, bead-top step, and quatrefoil foot polished to underside. Circa 1830. 3 1/4" H, 2 3/8" D rim, 2 1/2" DOA foot. *Undamaged except for a minor flake under the foot.*

Provenance: Collection of Charlotte and Louis Fischer, Lynchburg, VA. Purchased from Tony Stout, 2/29/92.

Estimate: 80.00 - 120.00

Price Realized: 46.80



Lot 696

PATTERN-MOLDED FOOTED OPEN SALTS, LOT OF 2, comprising a colorless double-ogee bowl example molded with nipt-diamonds and an unusual flute-cut rim, raised on a short ribbed stem and an applied circular sloping foot with wide polished pontil mark; and an amethyst urn-form bowl example with roll-over rim and 28 vertical ribs, raised on a ribbed stem and an applied circular sloping foot with rough pontil mark. 1810-1850. 3 1/4" and 2 7/8" H.

Colorless example with moderate shallow chip to outer edge of rim that slightly affects the profile, amethyst example lightly polished under rim.

Provenance: Property from the Dexter Charles Wright estate collection, Ponte Vedra, FL.

Estimate: 50.00 - 100.00

Price Realized: 105.30



Lot 697

FREE-BLOWN FOOTED OPEN SALT, deep cobalt blue lead glass, applied opal rim and base trim, shallow bowl with everted rim, raised on a short cylindrical stem and conical foot open into stem, with rough pontil mark. 1800-1840. 2 1/8" H, 2 5/8" D rim, 2 1/2" D foot. *Undamaged with minor spalling in association with the pontil mark, as made.*

Provenance: From the collection of the late Ken Lyon of Fishers Hill, VA.

Estimate: 200.00 - 300.00

Price Realized: 152.10



Lot 698

FREE-BLOWN FOOTED OPEN SALT, medium cobalt blue lead glass, shallow bowl with everted rim, raised on a short cylindrical stem and conical foot open into stem, with rough pontil mark. 1800-1840. 2 1/8" H, 2 3/8" D rim, 2 1/2" D foot. *Undamaged except for a flake to underside of foot, some light basal residue.*

Provenance: Property from the Dexter Charles Wright estate collection, Ponte Vedra, FL.

Estimate: 100.00 - 200.00

Price Realized: 152.10



Lot 699

ASSORTED BLOWN OPEN SALTS, LOT OF THREE, colorless, comprising a pattern-molded footed example with 16 heavy ribs, a pattern-molded pan-style example with 24 ribs and folded rim, and a free-blown pan-style example with folded rim, each with rough pontil mark. First half 19th century. 1 3/8" to 2 5/8" H, 2 1/4" to 3 1/8" D. *Undamaged, footed and free-blown examples with interior residue.*

Provenance: From the collection of the late Ken Lyon of Fishers Hill, VA.

Estimate: 80.00 - 120.00

Price Realized: 93.60



Lot 700

BLOWN-MOLDED OPEN SALTS, LOT OF FOUR, opaque powder blue, deep opalescent blue, deep cobalt blue, and fiery opalescent, each of footed basket form with ribbed exterior, polychrome-enamel and gilt decorations, rough pontil marks. 19th century. 2 3/4" to 3" HOA, 3 1/4" to 3 1/2" D. *Opaque blue example undamaged, others with a handle crack.*

Provenance: From the collection of the late Ken Lyon of Fishers Hill, VA.

Estimate: 80.00 - 120.00

Price Realized: 93.60



Lot 700a

BLOWN-MOLDED RIBBED OPEN SALT, colorless lead glass, ogee body, with eight vertical ribs to the body, scalloped rim and an applied scalloped foot, knop stem, rough pontil mark. Maker unverified. First quarter 19th century. 3" H, 2 1/2" D rim, 2 1/4" DOA foot. *Undamaged.*

Provenance: Property from the Dexter Charles Wright estate collection, Ponte Vedra, FL.

Estimate: 80.00 - 120.00

Price Realized: 105.30



Lot 701

ASSORTED FREE-BLOWN OPEN SALTS, LOT OF THREE, colorless, comprising a small example with flanged rim, a pan-style example with folded rim, and a hat-form example, each with rough pontil mark. Together with a free-blown mustard jar with applied handle and rough pontil mark, lacking cover. Four pieces total. United States. 19th century. 1" to 2" H, 2 3/8" to 2 3/4" D. *Salts undamaged, mustard with two small rim flakes. Hat with pontil spall, as made.*

Provenance: Collection of Douglas Reed, Maplewood, NJ. Flange-rim example ex-collection of Roland and Marian Sallada (retains collection label).

Estimate: 80.00 - 120.00

Price Realized: 58.50



Lot 702

ASSORTED BLOWN GLASS OPEN SALTS, LOT OF FOUR, comprising a rectangular blue opaline with enamel-decoration, a blue opaline pedestal, and a pair of cobalt blue pedestal examples applied to a square base. Probably European. 19th century. 1 1/2" to 3 1/2" H, 3 1/2" D circular rims, 1 5/8" x 2 3/4" rectangular. *Rectangular example with post-production polishing to the base corners, one cobalt example with a flake to the base edge, remainder undamaged.*

Provenance: From the collection of the late Ken Lyon of Fishers Hill, VA.

Estimate: 50.00 - 100.00

Price Realized: 152.10



Lot 703

BLOWN-MOLDED GV-24 BASKET OPEN SALT, colorless, flared rim with an applied handle, raised on a slight foot with narrow lobes and a rough pontil mark. Probably Europe. Second half 19th century. 3 3/4" HOA, 2" H rim, 3 1/4" D rim, 1 3/4" D foot. *Undamaged*. Literature: The McKearins - American Glass, pl. 116, fig. 4. Like Elsholz, lot 1581.

Provenance: Property from the Dexter Charles Wright estate collection, Ponte Vedra, FL.

Estimate: 50.00 - 80.00

Price Realized: 35.10



©Jeffrey S Evans & Assoc. 2017



Lot 704

EUROPEAN PANEL-CUT EIGHT-PIECE CONDIMENT SET, deep brilliant cobalt blue, comprising pairs of open salts, pepper pots, cruet bottles with stoppers, and mustard pots with covers, each of octagonal footed form with two medial cut rings and polished under the base. Together with one mustard ladle. Possibly England or France. First half 19th century. 2 1/2" to 5" HOA. *Undamaged*.

Provenance: From the collection of the late Ken Lyon of Fishers Hill, VA.

Estimate: 200.00 - 300.00

Price Realized: 263.15



©Jeffrey S Evans & Assoc. 2017



Lot 705

ASSORTED SILVER-FRAME OPEN SALTS, LOT OF 5, comprising a pair of silver-plated examples with cranberry glass inserts, a pair of sterling silver examples with cobalt blue glass inserts, and an unmarked silver-plated example with green glass insert. Together with two sterling silver spoons, one coin silver spoon, and one silver-plated spoon. Nine pieces total. Second half 19th/first quarter 20th century. 1 3/4" D and 2 1/2" x 3 1/2". *Undamaged*.

Provenance: From the collection of the late Ken Lyon of Fishers Hill, VA.

Estimate: 100.00 - 150.00

Price Realized: 175.50



Lot 706

BLOW-OVER AND CRACK-OFF BEEHIVE OPEN SALT, amethyst, rectangular form with plain, factory-polished rim curved on each side, above two conforming ribs, base with 11 ribs between the ends, 13 if you count the ends. United States. 1810-1830. 1 7/8" H, 2 1/8" x 3 1/8".
Excellent condition, two corners with a shallow outer-edge chip, one with exterior clamshell-form bruise, otherwise only a few minor flakes.
 Provenance: From a Boston area collection.

Estimate: 100.00 - 150.00
 Price Realized: 198.90



Lot 707

ASSORTED MOLDED OPEN SALTS, LOT OF FOUR, comprising two colorless GV-24 examples, one with applied handle, a deep amethyst lightly ribbed basket example, and a deep cobalt basket example with diamond panels and gilt decoration, each with rough pontil mark. 19th/20th century. 2" to 3 1/2" HOA. *Blue example with crack to handle near rim, remainder undamaged.*

Provenance: From the collection of the late Ken Lyon of Fishers Hill, VA.

Estimate: 80.00 - 120.00
 Price Realized: 105.30



©Jeffrey S Evans & Assoc. 2017



©Jeffrey S Evans & Assoc. 2017

Lot 708

BLOW-OVER AND CRACK-OFF OPEN SALTS, LOT OF 4, colorless, three with various diamond patterns, one with beehive sides and sunburst ends, two plain rim and two serrated rim, bases feature two with star, one with all-over diamonds, and one with ribs. Possibly New England Glass Works, or South Boston Flint Glass Works. 1810-1830. 1 3/4" H. *Excellent condition with only some minor flaking, beehive example with moderate exterior wear.* Literature: Wilson - American Glass, vol. 1, p. 209, fig. 213.

Provenance: From the collection of the late Ken Lyon of Fishers Hill, VA.

Estimate: 80.00 - 120.00
 Price Realized: 105.30



©Jeffrey S Evans & Assoc. 2017



Lot 709

BLOW-OVER AND CRACK-OFF OPEN SALTS, LOT OF 4, colorless, comprising two oval examples with vertical ribs, one with cut notches and sawtooth rim, a rectangular example with diamond sides and draped ends, and an oval example with diamond sides, fan ends, and base ribs, raised on a pressed lozenge-shape foot, each flat example with star under base. Possibly New England Glass Works, or South Boston Flint Glass Works. 1810-1830. 1 5/8" to 3 1/8" H. *Excellent condition with only a few shallow chips and minor flaking.* Literature: Wilson - American Glass, vol. 1, p. 211, fig. 219. Provenance: Property from the Dexter Charles Wright estate collection, Ponte Vedra, FL.

Estimate: 80.00 - 120.00

Price Realized: 58.50



©Jeffrey S Evans & Assoc. 2017



Lot 710

ASSORTED IRISH CUT GLASS OPEN SALTS, LOT OF 6, colorless lead glass, comprising two rectangular with one being fitted in a metal stand, two ovoid, and two pedestaled examples. Various makers. 19th and 20th century. 1 1/4" to 4 1/2" HOA. *Excellent to virtually undamaged condition, each with minor pattern nicking with the rectangular examples with scattered pattern flaking.*

Provenance: From the collection of the late Ken Lyon of Fishers Hill, VA.

Estimate: 50.00 - 100.00

Price Realized: 70.20



©Jeffrey S Evans & Assoc. 2017



Lot 710a

BLOW-OVER AND CRACK-OFF OPEN SALTS, LOT OF 4, colorless, each with various upright rib patterns and plain rim, two with fan-design ends, bases feature two with star, one with all-over waffle, and one with ribs. Possibly New England Glass Works, or South Boston Flint Glass Works. 1810-1830. 1 1/2" to 2" H. *Above average condition, each with one or two shallow chips and/or minor flaking.* Literature: Wilson - American Glass, vol. 1, p. 206, fig. 206 and p. 207, fig. 209.

Provenance: From the collection of the late Ken Lyon of Fishers Hill, VA.

Estimate: 50.00 - 100.00

Price Realized: 58.50



Lot 711

BLOW-OVER AND CRACK-OFF OPEN SALTS, LOT OF 5, colorless, each with various diamond patterns, two with fan ends, four plain rim and one serrated rim, bases feature two with star, two with rays, and one with ribs. Possibly New England Glass Works, or South Boston Flint Glass Works. 1810-1830. 1 1/2" and 1 3/4" H. *Above average condition, two with one or two shallow chips, others with light flaking.* Literature: Wilson - American Glass, vol. 1, p. 210, fig. 216 and p. 211, fig. 220.

Provenance: From the collection of the late Ken Lyon of Fishers Hill, VA.

Estimate: 50.00 - 100.00

Price Realized:58.50



Lot 712

BLOW-OVER AND CRACK-OFF OPEN SALTS, LOT OF 5, colorless, various rib, waffle, and diamond patterns, each with plain rim, bases feature two with star and three with rays. Possibly New England Glass Works, or South Boston Flint Glass Works. 1810-1830. 1 1/2" and 1 3/4" H. *Above average condition, each with one or two shallow chips and minor flaking, one with post-production polishing.* Literature: Wilson - American Glass, vol. 1, p. 208, fig. 212, p. 209, fig. 214, and p. 210, fig. 218.

Provenance: From the collection of the late Ken Lyon of Fishers Hill, VA.

Estimate: 50.00 - 100.00

Price Realized:35.10



Lot 713

BLOW-OVER AND CRACK-OFF ARTICLES, LOT OF 3, colorless, comprising an oval dish with diamonds above ribs on sides and a rayed base with polished pontil mark, a rectangular salt with matching pattern, and an ovolo-corner oblong salt with diamonds and vertical ribs. New England Glass Works, or South Boston Flint Glass Works, possibly others. 1810-1830. 1 1/2" to 2" H, 8 3/4" x 6". *Dish with shallow chipping and flaking to rim, matching salt undamaged, other salt with rim flaking and crack to one corner.*

Literature: Wilson - American Glass, vol. 1, p. 210, figs. 216, 217, and p. 212, fig. 223; and Kaiser - South Boston, p. 55, fig. 44.

Provenance: Property from the Dexter Charles Wright estate collection, Ponte Vedra, FL.

Estimate: 50.00 - 100.00

Price Realized:46.80



©Jeffrey S Evans & Assoc. 2017



Lot 714

ASSORTED IRISH CUT GLASS PEDESTAL OPEN SALTS, LOT OF FIVE, colorless and cobalt blue, each with an ovoid shell-form bowl raised with varying flaring stems, diamond-form bases. 19th century. 2 7/8" to 3 1/4" HOA.

Cobalt blue example in excellent condition with one rim point tipped, base with three minor flakes to the edge, remainder with minor to significant imperfections including flaking, chipping, and post-production polishing.

Provenance: From the collection of the late Ken Lyon of Fishers Hill, VA.

Estimate: 80.00 - 120.00

Price Realized: 46.80



©Jeffrey S Evans & Assoc. 2017

Lot 715

ASSORTED EARLY CUT GLASS OPEN SALTS, LOT OF 3, colorless lead glass, comprising a footed example with diamond-cut bowl, and two oval examples, each with Strawberry Diamonds and Fans, and star-cut base. Probably English and/or Irish. 1800-1840. 1 1/2" to 3 3/8" H. *Each with expected flaking/roughness, large oval example with moderate chip to underside of base.*

Provenance: Property from the Dexter Charles Wright estate collection, Ponte Vedra, FL.

Estimate: 50.00 - 80.00

Price Realized: 105.30



©Jeffrey S Evans & Assoc. 2017



Lot 716

ASSORTED OPEN SALTS, LOT OF SIX, colorless, canary yellow (black lighted), cobalt blue, and fiery opalescent, including oblong cut and blow-over and crack-off examples, an engraved silvered/mercury example, and two pressed examples. 19th century. 1 1/4" to 2 3/4" H. *Silvered example with losses to interior silvering to foot, opalescent and blue examples undamaged, others with normal chipping/roughness.*

Provenance: Collection of Douglas Reed, Maplewood, NJ.

Estimate: 50.00 - 80.00

Price Realized: 70.20



©Jeffrey S Evans & Assoc. 2017

Lot 717

ASSORTED OPEN SALTS, LOT OF TEN, comprising electric blue and colorless pressed double examples, six canary yellow (black lighted) pressed Post individual examples, a light green pattern-molded example with rough pontil mark, and a colorless cut glass example. Fourth quarter 19th/first quarter 20th century. 1" to 3 3/8" H. *Five canary examples with moderate shallow chips to rims, blue example with a minute flake to one corner of rim, remainder undamaged.*

Provenance: Property from the Dexter Charles Wright estate collection, Ponte Vedra, FL.

Estimate: 50.00 - 80.00

Price Realized: 46.80



©Jeffrey S Evans & Assoc. 2017

Lot 718

ASSORTED GLASS OPEN SALTS, LOT OF 15, various colors, including four opal cased inserts, a European double salt, two Pointed Hobnail, and an air-trap example. Various makers. 19th and 20th century. 1" to 3 1/2" HOA. *Pointed Hobnail examples each with a few hobs tipped, cut-facet with a couple minute flakes to the points, remainder undamaged.*

Provenance: From the collection of the late Ken Lyon of Fishers Hill, VA.

Estimate: 50.00 - 100.00

Price Realized: 81.90



©Jeffrey S Evans & Assoc. 2017

Lot 719

ASSORTED PRESSED GLASS OPEN SALTS, LOT OF 22, colorless, opaque white, and green, including a Bellflower, Sawtooth, three Waffle and Thumbprint, and two Bull's Eye variant examples. Various makers. Third quarter 19th century. 1" to 3 1/2" H. *Nine pieces undamaged including the Waffle and Thumbprint examples, the green diamond, Sawtooth, and Bellflower example, remainder with minor to moderate imperfections including flaking and chipping.*

Provenance: From the collection of the late Ken Lyon of Fishers Hill, VA.

Estimate: 50.00 - 100.00

Price Realized: 93.60



Lot 720

ASSORTED EAPG AND OTHER PRESSED OPEN SALTS, LOT OF 14, colorless and green, including two different Buckle, Bigler, Argus/Early Thumbprint, and a Gaines/Sandwich Loop. Second half 19th century. Various sizes. *Above average condition, ten undamaged, remainder with minor flaking.* Provenance: Collection of Douglas Reed, Maplewood, NJ.

Estimate: 50.00 - 80.00
Price Realized: 81.90



Lot 720a

BF-1 BASKET OF FLOWERS PRESSED OPEN SALT, colorless (unlisted in Neal), on four feet. Rare. Probably Boston & Sandwich Glass Co. 1830-1845. 2" H, 1 7/8" x 3 1/8". *Excellent condition, shallow inner-rim chip at one end, shallow chip to inside of one upper corner, flake to one foot.* Literature: Neal - Pressed Glass Salt Dishes of the Lacy Period, p. 1. The Acorn, Volume 15, 2008/2009, p. 56, "Pressed Glass Salt Dishes of the Lacy Period 1825-1850: An Addendum."

Provenance: Property from the Dexter Charles Wright estate collection, Ponte Vedra, FL.

Estimate: 80.00 - 120.00
Price Realized: 117.00



Lot 721

BF-1B BASKET OF FLOWERS PRESSED OPEN SALT, violet blue, on four feet. Very rare. Boston & Sandwich Glass Co. 1830-1840. 2 1/8" H, 1 7/8" x 3". *Excellent condition overall with a chip to opposite base edges and the tip of one foot, typical mold roughness to the rim especially at the scrolls.* Literature: Neal - Pressed Glass Salt Dishes of the Lacy Period, p. 3.

Provenance: From the collection of the late Ken Lyon of Fishers Hill, VA.

Estimate: 100.00 - 200.00
Price Realized: 702.00



Lot 722

BT-2 "PITTSBURGH." STEAMBOAT PRESSED OPEN SALT, medium to deep blue, embossed on stern, rope table ring. Very rare. Attributed to the Stourbridge Flint Glass Works, Pittsburgh, PA. 1830-1845. 1 1/2" H, 1 7/8" x 3 5/8".

Above average condition with scattered flaking/chipping to the rim, a chip to the tip of the keel, and a moderate chip to the table ring. Literature: Neal - Pressed Glass Salt Dishes of the Lacy Period, p. 21. Innes - Pittsburgh Glass, color pl. 6. Spillman - Corning, p. 174, fig. 651. Like Elsholz, lot 139.

Provenance: Property from the Dexter Charles Wright estate collection, Ponte Vedra, FL.

Estimate: 500.00 - 800.00

Price Realized: 292.50



Lot 723

CN-1A CROWN PRESSED OPEN SALT, strong fiery opalescent, on four scroll feet. Rare. Boston & Sandwich Glass Co. 1830-1845. 2 1/8" H, 1 7/8" x 3 1/8". *Virtually proof having only a minor flake to one corner of the body, typical minor mold roughness to the rim and interior of the feet.*

Literature: Neal - Pressed Glass Salt Dishes of the Lacy Period, p. 47.

Provenance: From the collection of the late Ken Lyon of Fishers Hill, VA.

Estimate: 80.00 - 120.00

Price Realized: 585.00



Lot 724

EE-3A EAGLE AND SHIELD PRESSED OPEN SALT, colorless, on four feet. Scarce. Boston & Sandwich Glass Co. 1830-1845. 2 1/8" H, 2" x 3 1/4". *Excellent condition, flaking/mold roughness to inner rim at one end and a shallow chip to interior of two feet, none of which affects the profiles.* Literature: Neal - Pressed Glass Salt Dishes of the Lacy Period, p. 78.

Provenance: Collection of Douglas Reed, Maplewood, NJ.

Estimate: 50.00 - 100.00

Price Realized: 128.70



Lot 725

GA-4A GOTHIC ARCH AND HEART PRESSED OPEN SALT, opalescent to opaque medium blue, even scallop rim. Scarce. Probably Boston & Sandwich Glass Co. 1835-1845. 1 3/4" H, 2" x 2 3/4". *Sizeable inner-rim chip that only slightly affects the profile, two shallow outer-rim chips, light flaking/mold roughness to rim and base.* Literature: Neal - Pressed Glass Salt Dishes of the Lacy Period, p. 93. Parallels Spillman - Corning, p. 180, fig. 680. Like Elsholz, lot 152.

Provenance: Property of a New York private collector.

Estimate: 80.00 - 120.00

Price Realized: 128.70



Lot 726

JY-1A VARIANT JERSEY PRESSED OPEN SALT, light green, even scallop rim, 12-point star in base. Unlisted variant with pronounced raised bead to center of interior base. Very rare, possibly extremely rare. Jersey Glass Co. 1835-1850. 1 5/8" H, 2 1/8" x 3 1/8". *Rough open bubble to tip of two rim corners, shallow chip and flakes/mold roughness to rim.* Literature: Parallels Neal - Pressed Glass Salt Dishes of the Lacy Period, p. 123. Provenance: From a Boston area collection.

Estimate: 80.00 - 120.00
Price Realized: 438.75



Lot 727

JY-2 JERSEY MARKED PRESSED OPEN SALT, light green, embossed under base, scallop and point rim. Rare. Jersey Glass Co. 1835-1850. 1 7/8" H, 2 1/8" x 3". *Near proof, rim with the loss of one corner scallop, a flake to one outer corner, and minor mold roughness.* Literature: Neal - Pressed Glass Salt Dishes of the Lacy Period, p. 124. Like Elsholz, lot 1002. Provenance: From a Mid-Atlantic private collection. Jeffrey S. Evans & Assoc., 5/21/14, lot 467. Ex-collection of Lois S. Hirschmann, Marion, MA.

Estimate: 100.00 - 200.00
Price Realized: 351.00



Lot 728

LE-3 LYRE PRESSED OPEN SALT, opalescent medium blue, shaped rim, on four scrolled feet. Very rare. Boston & Sandwich Glass Co. 1835-1845. 1 7/8" H, 1 7/8" x 3 1/4". *Very good condition overall with an annealing check running from the rim which does not affect the resonance, typical minor mold roughness to the rim and interior of the feet.* Literature: Neal - Pressed Glass Salt Dishes of the Lacy Period, p. 131. Provenance: From the collection of the late Ken Lyon of Fishers Hill, VA.

Estimate: 200.00 - 300.00
Price Realized: 468.00



Lot 729

OL-16A STRAWBERRY DIAMOND AND SWAG PRESSED OPEN SALT, unlisted colorless, oval with scallop rim. Probably very rare. Probably Boston & Sandwich Glass Co. 1835-1850. 1 5/8" H, 2 1/4" x 3 1/4". *Undamaged. Very slight underfill to one scallop, as made.* Literature: Neal - Pressed Glass Salt Dishes of the Lacy Period, p. 221. Provenance: Collection of Douglas Reed, Maplewood, NJ.

Estimate: 50.00 - 100.00
Price Realized: 292.50



Lot 730

OO-26 OCTAGON OBLONG PRESSED OPEN SALT, unlisted medium green with red striation to interior, plain rim, tiny-diamond base. Probably extremely rare. Possibly New England. 1835-1850. 1 1/4" H, 2" x 2 3/4". *Rim with chip to outer edge at three corners, foot with moderate shallow chip and flake to underside.* Literature: Parallels Neal - Pressed Glass Salt Dishes of the Lacy Period, p. 194.

Provenance: Property from the Dexter Charles Wright estate collection, Ponte Vedra, FL.

Estimate: 100.00 - 200.00

Price Realized: 819.00



Lot 730a

OO-31 VARIATION HEAVY DRAPE PRESSED OPEN SALT, unlisted milky amethyst, oblong octagonal form with oval-bead rim above two drapes on each panel, base variation with eight rays arranged in two groups of four. Probably extremely rare, possibly unique. United States. 1830-1850. 1 3/8" H, 2 1/4" x 3 1/2". *Undamaged except for some minor flaking/mold roughness to inner rim and a flake under base.* Literature: New designation published in The Acorn, Volume 15, 2008/2009, pp. 50, 51, "Pressed Glass Salt Dishes of the Lacy Period 1825-1850: An Addendum." Parallels Spillman - Corning, p. 242, fig. 947.

Provenance: From a Boston area collection.

Estimate: 200.00 - 300.00

Price Realized: 526.50



Lot 731

PO-1 VARIANT PEACOCK EYE OVAL PRESSED OPEN SALT, colorless, scalloped rim, serrated table ring. Base with central large side bead in outer ring like PO-1A. Probably very rare. Boston & Sandwich Glass Co. 1830-1840. 1 3/8" H, 2 1/2" x 3 1/2". *Proof except for inner rim with small shallow chip and minor mold roughness.* Literature: Parallels Neal - Pressed Glass Salt Dishes of the Lacy Period, p. 274.

Provenance: From the collection of the late Ken Lyon of Fishers Hill, VA.

Catalogue Note: This is the first example of this salt that we have sold.

Estimate: 50.00 - 100.00

Price Realized: 81.90



Lot 732

RP-3 ROUND FLORAL PRESSED OPEN SALT, mottled silvery opaque powder to violet blue, intricate foliate chain-top rim with inner rope rings, 12-scallop foot. Extremely rare. Boston & Sandwich Glass Co. 1835-1850. 2" H, 3 1/8" D rim, 2" D foot. *Rim with repairs to losses, small shallow chip to foot.* Literature: Neal - Pressed Glass Salt Dishes of the Lacy Period, p. 350. Like Elsholz, lot 1506. Barlow/Kaiser - The Glass Industry in Sandwich, vol. 1, p. 285, fig. 1460a. Spillman - Corning, fig. 755 and color pl. 9.

Provenance: Collection of Douglas Reed, Maplewood, NJ. Jeffrey S. Evans (T/A GVA), 5/20/06, lot 1158 (partial). Ex-collection of Dr. and Mrs. Oscar Hollander (retains collection label).

Estimate: 50.00 - 80.00

Price Realized: 128.70



Lot 733

RP-36 NARROW FLUTE FOOTED PRESSED OPEN SALT, unlisted cobalt blue, circular form with plain rim, raised on a hexagonal foot with rays to underside. Listed in amber as unique, probably extremely rare or unique. Probably United States. 1840-1860. 2 1/8" H, 2 5/8" D rim. *Undamaged except for two minor flakes to underside of foot.* Literature: New designation published in The Acorn, Volume 15, 2008/2009, p. 67, "Pressed Glass Salt Dishes of the Lacy Period 1825-1850: An Addendum."
Provenance: From a Boston area collection.

Estimate: 100.00 - 200.00
Price Realized: 292.50



Lot 734

SC-1(A) VARIANT PEACOCK EYE MEDALLION AND ACANTHUS LEAF PRESSED OPEN SALT, colorless, on four feet. Base variation having the 22 rays coming to a raised star-like point in the center. Unlisted, probably extremely rare. Providence Flint Glass Co. 1835-1850. 1 7/8" H, 2" x 3 1/4". *Shallow chip to center of one side rim, otherwise undamaged. Slight underfill to rim at one end, as made.* Literature: Parallels Neal - Pressed Glass Salt Dishes of the Lacy Period, p. 386. Like Elsholz, lot 1358, variation not noted in catalogue.
Provenance: Collection of Douglas Reed, Maplewood, NJ.

Estimate: 80.00 - 120.00
Price Realized: 351.00



Lot 735

SD-7 STRAWBERRY DIAMOND PRESSED OPEN SALT, deep cobalt blue, scallop and point rim. Scarce. Boston & Sandwich Glass Co. 1827-1840. 2" H, 2 1/8" x 2 7/8". *Virtually proof with a partial burst bubble beside one foot, probably as made.* Literature: Neal - Pressed Glass Salt Dishes of the Lacy Period, p. 449.
Provenance: From the collection of the late Ken Lyon of Fishers Hill, VA.

Estimate: 50.00 - 100.00
Price Realized: 409.50



Lot 736

SD-9 STRAWBERRY DIAMOND PRESSED OPEN SALT, unlisted opaque white, scallop and point rim. Probably extremely rare, possibly unique. Boston & Sandwich Glass Co. and others. 1827-1840. 2" H, 2" x 2 3/4". *Nearly proof with a flake to one foot and two minor flakes to the rim, typical minute mold roughness.* Literature: Neal - Pressed Glass Salt Dishes of the Lacy Period, p. 452.
Provenance: From the collection of the late Ken Lyon of Fishers Hill, VA.

Estimate: 200.00 - 300.00
Price Realized: 936.50



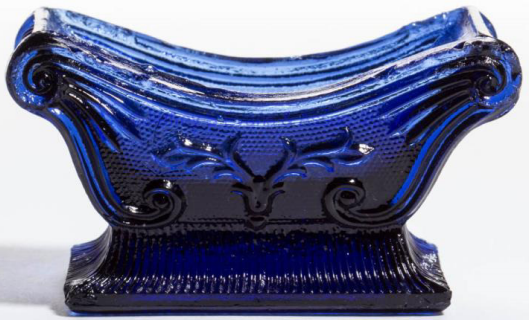
Lot 737

SL-18 SHELL PEDESTAL PRESSED OPEN SALT, colorless, ornate shaped rim, acorn end panels, raised on a conforming pedestal with scrolling feet, rays to underside. Extremely rare. Possibly Boston & Sandwich Glass Co. 1835-1850. 2 3/4" H, 2 1/4" x 3 3/8". *One end rim with loss to top of shell, otherwise only a shallow chip to one corner of body and minor mold roughness.* Literature: Neal - Pressed Glass Salt Dishes of the Lacy Period, p. 424. Like Elsholz, lot 1366.

Provenance: Collection of Douglas Reed, Maplewood, NJ.

Estimate: 100.00 - 150.00

Price Realized: 468.00



Lot 738

SN-1 STAG'S HORN PRESSED OPEN SALT, deep cobalt blue, 26 rays under base. Scarce. Possibly Boston & Sandwich Glass Co. 1835-1850. 1 5/8" H, 1 7/8" x 3 1/8". *Proof except for a hint of mold roughness to corners.* Literature: Neal - Pressed Glass Salt Dishes of the Lacy Period, p. 427. Spillman - Corning, p. 198, fig. 780.

Provenance: From the collection of the late Ken Lyon of Fishers Hill, VA.

Estimate: 200.00 - 300.00

Price Realized: 140.40



Lot 739

UNLISTED OP OVAL PEDESTAL PRESSED OPEN SALT, colorless, similar to OP-14 with central fan pendant below rim, ribbed lower bowl and top of foot, unpatterned underneath. Probably extremely rare. 1840-1850. 2" H, 2" x 3 1/8". *Near proof, minor flake to inner rim, shallow chip and minor flaking under foot.*

Provenance: Collection of Douglas Reed, Maplewood, NJ.

Estimate: 50.00 - 100.00

Price Realized: 175.50



Lot 740

UNLISTED OR AND RD PRESSED OPEN SALTS, LOT OF 2, colorless, comprising an Octagon - Round example with a double scroll and fan ornament in each panel, raised on an unpatterned octagonal foot, and a Round example similar to RD-26 but with shorter arrows, longer fans, and an all-over waffle pattern under the base. Probably very or extremely rare. 1840-1850. 1 1/2" H, 2 1/2" and 2 7/8" D. *Excellent condition, OR with a chip to one foot point, RD with light inner-rim flaking/mold roughness.*

Provenance: Collection of Douglas Reed, Maplewood, NJ.

Estimate: 50.00 - 100.00

Price Realized: 46.80



©Jeffrey S Evans & Assoc. 2017

Lot 740a

UNLISTED RD AND RP PRESSED OPEN SALTS, LOT OF 2, colorless, each with fancy shaped rim above floral pendants and upright narrow ellipses, ringed bases like RD-5, one wafer attached to a pedestal base featuring a slightly tapered stem stepped to a circular foot with rays to underside, each with rough pontil mark. Probably extremely rare. 1830-1845. 1 1/3" and 3 1/4" H, 3 1/4" D. *Undamaged*. Provenance: From the collection of the late Ken Lyon of Fishers Hill, VA.

Estimate: 100.00 -200.00
Price Realized: 128.70



©Jeffrey S Evans & Assoc. 2017

Lot 741

UNLISTED RP ROUND PEDESTAL PRESSED OPEN SALTS, LOT OF TWO, comprising a soft blue example with beaded ovals within scroll frames, flanked by scrolls, shaped rim, and unusual circular foot with fluted top and fine rays to a diamond-point center underneath, and a colorless diminutive example with arches, trefoils, and tulips, plain rim, and circular foot with tiny diamonds to underside. Probably very or extremely rare. 1830-1845. 1 5/8" H, 2 1/2" D, and 1 3/4" H, 2" D. *Blue example undamaged with just a hint of mold roughness, colorless example with a flake to edge of rim and shallow chip under the base, small annealing separation to rim*. Provenance: From the collection of the late Ken Lyon of Fishers Hill, VA.

Estimate: 80.00 - 120.00
Price Realized: 234.00



Lot 742

UNLISTED SC SCROLL PRESSED OPEN SALT, cobalt blue, fan to center of rim, scrolled corners, ends closely parallel SC-14, raised on scroll feet, base with tiny raised squares flanked by rope ends. Probably extremely rare. 1830-1845. 1 5/8" H, 1 3/4" x 3 1/4". *Excellent condition, shallow chip to underside of one foot, otherwise only light mold roughness to corners and feet*. Provenance: Collection of Douglas Reed, Maplewood, NJ.

Estimate: 200.00 - 300.00
Price Realized: 409.50



©Jeffrey S Evans & Assoc. 2017

Lot 743

ASSORTED LACY PRESSED OPEN SALTS, LOT OF 5, colorless, comprising a CT-1A, MV-1A, SD-4B Variant with slightly different base, SD-14, and SL-1A. Plentiful and scarce. Boston & Sandwich Glass Co. and others. 1835-1850. Various sizes. *MV with moderate chip to edge of base, remainder near proof with a few chips*. Provenance: Collection of Douglas Reed, Maplewood, NJ.

Estimate: 50.00 - 100.00
Price Realized: 46.80



©Jeffrey S Evans & Assoc. 2017



Lot 744

ASSORTED LACY PRESSED OPEN SALTS, LOT OF 4, comprising a light green NE-5, and colorless NE-4, SD-7A, and RP-25 with milky striation. Plentiful, scarce, and rare. 1830-1845. Various sizes. *Green example with sizable inner-rim chip that only slightly affects the profile, round example with chip to one foot point and two broken bubbles to edge of rim, remainder near proof, NE-4 with rim underfill.*

Provenance: Property from the Dexter Charles Wright estate collection, Ponte Vedra, FL.

Estimate: 50.00 - 100.00

Price Realized: 58.50



©Jeffrey S Evans & Assoc. 2017



Lot 745

ASSORTED LACY PRESSED OPEN SALTS, LOT OF 6, including a dark purple BT-2, an unlisted colorless OL-16A, and colorless SL-1A. Unique, scarce, etc. 1830-1845. Various sizes. *Boat with large loss and chipping, named colorless examples excellent, OL-16A with moderate underfill, remainder with moderate to significant damage.*

Provenance: From the collection of the late Ken Lyon of Fishers Hill, VA.

Estimate: 50.00 - 80.00

Price Realized: 46.80



©Jeffrey S Evans & Assoc. 2017



Lot 746

ASSORTED LACY PRESSED OPEN SALTS, LOT OF 5, comprising an opalescent CN-1A, a cobalt blue SC-5, two unlisted light opalescent SL-14B, and a deep cobalt blue SD-7. Scarce to probably extremely rare. 1830-1845. Various sizes. *All with condition issues, CN-1A with broken but present foot, SC-5 with partial loss of one foot and heavy mold roughness/wear, both SL-14B lacking a foot, one with loss to one corner, SD-7 with glued section of one corner.*

Provenance: Collection of Douglas Reed, Maplewood, NJ.

Estimate: 50.00 - 80.00

Price Realized: 70.20



©Jeffrey S Evans & Assoc. 2017



Lot 747

ASSORTED LACY PRESSED OPEN SALTS, LOT OF 6, colorless, comprising a BF-1B, NE-4, OL-15, OO-1A, SL-1A, and WN-1. Plentiful to very rare. Boston & Sandwich Glass Co. and others. 1835-1850. Various sizes. *OL, NE, and WN with losses, others average with chips.*

Provenance: Collection of Douglas Reed, Maplewood, NJ.

Estimate: 30.00 - 50.00

Price Realized: 23.40



©Jeffrey S Evans & Assoc. 2017



Lot 748

ASSORTED LACY PRESSED OPEN SALTS, LOT OF 6, colorless, comprising a BS-2, BS-3, GA-2, OL-14, OO-1A, and SL-1A. Plentiful and scarce. Boston & Sandwich Glass Co. and others. 1835-1850. Various sizes. *Two BS and OL proof, remainder above average with only one or two chips.*

Provenance: Collection of Douglas Reed, Maplewood, NJ.

Estimate: 50.00 - 100.00

Price Realized: 35.10



Lot 749

BALL AND GROOVE PRESSED OPEN SALT, medium violet, hexagonal form with flared six-petal rim, raised on a conforming foot with polished pontil mark. Boston & Sandwich Glass Co. 1845-1860. 3 1/2" H, 3 7/8" DOA rim, 2 3/4" DOA foot. *Nearly undamaged with a shallow chip and adjacent flake to the underside of one petal.* Literature: Parallels Barlow/Kaiser - The Glass Industry in Sandwich, vol. 5, p. 104, fig. 5215. Provenance: From a Boston area collection.

Estimate: 80.00 - 120.00

Price Realized: 234.00



Lot 750

BALL AND GROOVE PRESSED OPEN SALT, canary yellow (black lighted), hexagonal form with flared six-petal rim, raised on a conforming foot with polished pontil mark. Boston & Sandwich Glass Co. 1845-1860. 3 1/2" H, 3 7/8" DOA rim, 2 3/4" DOA foot. *Nearly undamaged with a flake to one base point.* Literature: Barlow/Kaiser - The Glass Industry in Sandwich, vol. 5, p. 104, fig. 5215. Provenance: From a Boston area collection.

Estimate: 80.00 - 120.00

Price Realized: 105.30



Lot 750a

BALL AND GROOVE FOOTED PRESSED OPEN SALT, canary yellow (black lighted), hexagonal form with flared six-petal rim, raised on a conforming foot with polished pontil mark. Boston & Sandwich Glass Co. 1845-1860. 3 1/2" H, 3 7/8" DOA rim, 2 3/4" DOA foot. *Undamaged except for a minor sliver flake to underside of foot.* Literature: Barlow/Kaiser - The Glass Industry in Sandwich, vol. 5, p. 105, fig. 5215. Provenance: Property from the Dexter Charles Wright estate collection, Ponte Vedra, FL.

Estimate: 80.00 - 120.00 Price Realized: 468.00



Lot 751

BIGLER PRESSED OPEN SALT, cobalt blue, oval form with plain rim, grooves continue across base. Boston & Sandwich Glass Co. and possibly others. 1850-1870. 1 3/8" H, 2 3/8" x 3 1/4". *Several minute flakes to inner rim, heavy mold roughness under rim, shallow chip to edge of base.* Provenance: From a Boston area collection.

Estimate: 50.00 - 80.00 Price Realized: 35.10



Lot 752

HEAVY MEDIAL DRAPE PRESSED OPEN SALT, amethyst, oblong octagonal form with concave corners and plain, curved rim, 12-petal florette in base. Probably Massachusetts, possibly New England Glass Co. 1825-1830. 1 1/2" H, 1 7/8" x 3". *Undamaged except for a flake under base and some minute flakes/mold roughness to rim.* Literature: Parallels Wilson - American Glass, vol. 1, p. 293, fig. 327. Provenance: From a Boston area collection. Catalogue Note: Ken Wilson speculates that this is one of the earliest pieces of glass made using a bench press.

Estimate: 200.00 - 300.00 Price Realized: 152.10



Lot 753

HEAVY DRAPE PRESSED OPEN SALT, amethyst, oval form with rim conforming to eight groups of three drapes surrounding the body, conforming lobbed base with central bead. United States. 1840-1860. 1 1/2" H, 2 1/4" x 3 1/4". *Undamaged with just a hint of mold roughness, shallow chip-like underfill to inner rim at one end, as made.* Literature: Spillman - Corning, p. 242, fig. 948. Provenance: From a Boston area collection.

Estimate: 100.00 - 200.00 Price Realized: 175.50



Lot 754

HEAVY CONCAVE PANEL AND PILLAR PRESSED OPEN SALT, emerald green, conforming rim, base with all-over waffle pattern. United States. 1840-1860. 1 1/4" H, 2 5/8" x 3 1/4". *Excellent condition with only some scattered flakes and mold roughness.* Literature: Spillman - Corning, p. 242, fig. 943. Provenance: From a Boston area collection. Ex-collection of Paul and Gladys Richards (retains collection label).

Estimate: 100.00 - 150.00 Price Realized: 380.25



Lot 755

HEAVY CONCAVE PANEL AND PILLAR PRESSED OPEN SALT, deep cobalt blue, conforming rim, base with all-over waffle pattern. United States. 1840-1860. 1 1/4" H, 2 5/8" x 3 1/4". *Undamaged except for a few minute nicks.* Literature: Parallels Spillman - Corning, p. 242, fig. 943. Provenance: From a Boston area collection.

Estimate: 100.00 - 150.00
Price Realized: 105.30



Lot 756

RINGED OCTAGONAL PRESSED OPEN SALTS / EGG CUPS, LOT OF TWO, brilliant cobalt blue and brilliant emerald green, each bowl with an eight-scallop rim, raised on a flared octagonal foot with rough pontil mark. Probably United States. 1850-1870. 2 1/2" H, 2" D rim, 1 7/8" DOA foot. *Undamaged.* Provenance: Collection of Douglas Reed, Maplewood, NJ.

Estimate: 100.00 - 150.00
Price Realized: 105.30



Lot 757

EIGHT-PANEL PRESSED DOUBLE SALT, opalescent powder blue, each circular bowl with plain rim centering a six-panel handle, rayed bases. 1860-1890. 2 3/4" HOA, 2 1/8" x 5". *Undamaged.* Literature: Parallels Heacock/Johnson - 5,000 Open Salts, p. 57, fig. 799. Provenance: From a Boston area collection.

Estimate: 80.00 - 120.00
Price Realized: 58.50



Lot 758

BULLS-EYE AND SCROLL PRESSED OPEN SALT, medium amethyst, oval bowl with plain rolled-over rim above six bulls-eyes, raised on a double C-scroll stem and oval, slightly domed foot. Probably Midwestern United States. 1840-1860. 3" H, 3" x 3 7/8" rim. *Excellent condition overall with scattered flaking and roughness to the underside of the rim and foot edge.* Provenance: From a Boston area collection.

Estimate: 80.00 - 120.00
Price Realized: 117.00



Lot 759

BULLS-EYE AND SCROLL PRESSED OPEN SALT, deep cobalt blue, oval bowl with plain rolled-over rim above six bulls-eyes, raised on a double C-scroll stem and oval, slightly domed foot. Probably Midwestern United States. 1840-1860. 3" H, 3" x 3 7/8" rim. *Excellent condition overall with scattered flaking and roughness to the underside of the rim.* Provenance: From a Boston area collection.

Estimate: 80.00 - 120.00
Price Realized: 105.30



Lot 760

GIANT SAWTOOTH PRESSED OPEN SALT, deep cobalt blue, circular form with eight pronounced medial points, conforming rim and base. United States. 1840-1860. 2 1/8" H, 4 1/4" DOA. *Undamaged*. Provenance: From a Boston area collection.

Estimate: 80.00 - 120.00
Price Realized: 93.60



Lot 760a

HEAVY PRESSED OPEN SALT, amethyst, circular egg and dart pattern rim above an octagonal stepped body, base with 16-point star. United States. 1840-1860. 1 1/2" H, 3" D. *Excellent condition, minor mold roughness to underside of rim, several minor flakes to edge of base and shallow chip to underside of base*. Literature: Parallels Spillman - Corning, p. 241, fig. 937. Provenance: From a Boston area collection.

Estimate: 100.00 - 150.00
Price Realized: 81.90



Lot 761

HEAVY BEEHIVE PRESSED OPEN SALT, deep fiery opalescent, rectangular form with curved, even-scallop rim above two straight ribs, base with three ribs flanked by a ridge on each end. Boston & Sandwich Glass Co. and possibly others. 1827-1835. 1 7/8" H, 2 1/8" x 3 1/8". *Near proof with only a few very minor flakes*. Literature: Parallels Barlow/Kaiser - The Glass Industry in Sandwich, vol. 1, p. 278, fig. 1436. Provenance: From a Boston area collection.

Estimate: 80.00 - 120.00
Price Realized: 380.25



Lot 762

HEAVY DRAPE PRESSED OPEN SALT, golden amber, oval form with rim conforming to eight groups of three drapes surrounding the body, conforming lobed base with central bead. United States. 1840-1860. 1 1/2" H, 2 1/4" x 3 1/4". *Undamaged*. Literature: Parallels Spillman - Corning, p. 242, fig. 948. Provenance: From a Boston area collection.

Estimate: 80.00 - 120.00
Price Realized: 234.00



Lot 763

HEAVY DRAPE PRESSED OPEN SALT, cobalt blue, oval form with rim conforming to eight groups of three drapes surrounding the body, conforming lobed base with central bead. United States. 1840-1860. 1 1/2" H, 2 1/4" x 3 1/4". *Excellent condition, rim with a shallow chip and scattered flaking*. Literature: Parallels Spillman - Corning, p. 242, fig. 948. Provenance: From a Boston area collection.

Estimate: 80.00 - 120.00
Price Realized: 187.20



Lot 764

HEAVY POST AND PANEL PRESSED OPEN SALT, deep cobalt blue, rectangular form with flat rim and plain base with oval indentation. United States. 1840-1860. 1 3/8" H, 2 1/8" x 3 1/8". *Undamaged except for a few minor flakes to base.* Provenance: From a Boston area collection.

Estimate: 80.00 - 120.00

Price Realized: 351.00



Lot 765

HEAVY POST AND PANEL DIVIDED PRESSED OPEN SALT, deep cobalt blue, rectangular form with flat rim and plain base with oval indentation. United States. 1840-1860. 1 3/8" H, 2 1/8" x 3 1/8". *Excellent condition, divider with shallow loss to top, probably as made, and an annealing check, inner rim with a shallow chip and minor mold roughness.* Provenance: From a Boston area collection.

Estimate: 80.00 - 120.00

Price Realized: 128.70



Lot 766

HEAVY RIBBED PRESSED OPEN SALT, deep amethyst, oblong octagonal form with oval-bead rim above vertical ribs, rayed base. United States, possibly Midwestern. 1830-1840. 1 3/8" H, 2 3/8" x 3 3/8". *Excellent condition, loss of one rim bead and flake to another, area of inner-rim flaking/mold roughness.*

Provenance: From a Boston area collection.

Estimate: 80.00 - 120.00

Price Realized: 58.50



Lot 767

HEAVY SOFA-FORM PRESSED OPEN SALT, cobalt blue, scrolled rim with rolled ends, raised on rolled feet. United States. 1830-1850. 1 3/4" H, 1 7/8" x 3". *Well above average condition with a few scattered shallow chips and flakes.* Literature: Parallels Spillman - Corning, p. 241, figs. 939, 940. Provenance: From a Boston area collection.

Estimate: 80.00 - 120.00

Price Realized: 163.80



Lot 768

HEAVY SOFA-FORM PRESSED OPEN SALT, sage green, scrolled rim with rolled ends, raised on rolled feet. United States. 1830-1850. 1 3/4" H, 1 7/8" x 3". *Average condition with shallow chipping and flaking.* Literature: Spillman - Corning, p. 241, fig. 939. Provenance: From a Boston area collection. Ex-collection of Paul and Gladys Richards (retains collection label).

Estimate: 80.00 - 120.00

Price Realized: 234.00



Lot 769

HEAVY SOFA-FORM PRESSED OPEN SALTS, LOT OF 2, colorless and yellow amber, each scrolled rim with rolled ends, raised on rolled feet. United States. 1830-1850. 1 3/4" H, 1 7/8" x 3". *Slightly above average condition with shallow chipping and flaking.*

Literature: Parallels Spillman - Corning, p. 241, figs. 939, 940. Provenance: From a Boston area collection.

Estimate: 80.00 - 120.00

Price Realized: 409.50



Lot 770

HEAVY HEXAGONAL PRESSED OPEN SALT, deep cobalt blue, urn form with stepped plain rim, raised on a conforming stem and circular foot with factory-polished mold lines and pontil mark. Probably Midwestern. 1840-1860. 3 1/4" H, 3 1/2" DOA rim, 2 1/2" D foot. *Undamaged.* Literature: Parallels Innes - Pittsburgh Glass, p. 363, pl. 399, fig. 2; and Jzyk/Robertson - The Open Salt Compendium, p. 250, pl. 755.

Provenance: Property from the Dexter Charles Wright estate collection, Ponte Vedra, FL.

Estimate: 80.00 - 120.00

Price Realized: 222.30



Lot 770a

OGEE PANEL PRESSED OPEN SALTS, LOT OF TWO, deep sapphire blue and violet, each rectangular form with plain rim and base having a central bead surrounded by 12 rays, like Lee/Rose nos. 323-326 cup plates, sapphire example heavy pressed. United States. 1840-1860. 1 3/8" H, 2" x 2 7/8", and 1 1/2" H, 1 7/8" x 2 3/4". *Undamaged except for a few minor flakes to rim of blue example.*

Provenance: From the collection of the late Ken Lyon of Fishers Hill, VA.

Estimate: 80.00 - 120.00

Price Realized: 81.90



Lot 771

OGEE PANEL PRESSED OPEN SALTS, LOT OF TWO, golden amber and swirling cobalt blue, each rectangular form with plain rim and base having a central bead surrounded by 12 rays, like Lee/Rose nos. 323-326 cup plates. United States. 1840-1860. 1 1/2" H, 1 7/8" x 2 3/4". *Blue example with shallow chip and flake to top of rim, sliver chip to outside of one upper corner, and chip to one base corner, amber example with small chip to top of rim and moderate mold roughness to rim.*

Provenance: From a Boston area collection.

Estimate: 80.00 - 120.00

Price Realized: 105.30



Lot 772

FINE RIBBED CONCAVE PANEL PRESSED OPEN SALT, opaque powder blue, rectangular form with smooth rim conforming to body, cross-hatch and bulls-eye base. Probably United States. 1850-1870. 1 1/4" H, 2 3/4" x 3 3/4". *Undamaged.* Provenance: From a Boston area collection.

Estimate: 80.00 - 120.00
Price Realized: 93.60



Lot 773

RINGED OCTAGONAL PRESSED OPEN SALTS / EGG CUPS, LOT OF 2, amethyst and brilliant deep cobalt blue, each bowl with an eight-scallop rim, raised on a flared octagonal foot with rough pontil mark. Probably United States. 1850-1870. 2 1/2" H, 2" D rim, 1 7/8" DOA foot. *Undamaged except for a flake to inner rim of amethyst example.* Provenance: Collection of Douglas Reed, Maplewood, NJ.

Estimate: 80.00 - 120.00
Price Realized: 58.50



Lot 774

SANDWICH GLASS PRESSED DOUBLE SALT, deep amethyst, five-panel bowls centering a hexagonal baluster-form handle. Boston & Sandwich Glass Co. 1865-1887. 3 1/4" H, 2 1/2" x 4 3/8". *Undamaged except for a few minute flakes to the interior bowl rims.* Literature: Barlow/Kaiser - The Glass Industry in Sandwich, vol. 1, p. 295, fig. 1487a. Provenance: From a Boston area collection.

Estimate: 100.00 - 150.00
Price Realized: 105.30



Lot 775

SANDWICH GLASS PRESSED DOUBLE SALT, translucent starch blue, five-panel bowls centering a hexagonal baluster-form handle. Boston & Sandwich Glass Co. 1865-1887. 3 1/4" H, 2 1/2" x 4 3/8". *Undamaged except for a minute flake to one rim point, possibly as made.* Literature: Parallels Barlow/Kaiser - The Glass Industry in Sandwich, vol. 1, p. 295, fig. 1487. Provenance: From a Boston area collection.

Estimate: 80.00 - 120.00
Price Realized: 93.60



Lot 776

MELON RIBBED PRESSED DOUBLE SALT, translucent starch blue, plain rims, central ribbed handle, rayed bases. 1850-1870. 3 5/8" HOA, 1 1/4" H to bowl rim, 2" D bowls.

Two chips to interior rim of one bowl slightly affecting the profile, otherwise undamaged.

Provenance: From a Boston area collection. Ex-collection of Scott Hambidge (retains collection label).

Estimate: 80.00 - 120.00

Price Realized: 35.10



Lot 777

ASSORTED BOTTLE GLASS PRESSED OPEN SALTS, LOT OF TWO, blue/green, each circular form raised on low foot, one with swirled ribs, other with swirled S-scrolls and beads. 1860-1890. 1 5/8" and 1 3/4" H, 2 1/2" and 3" D rims. *Rib example undamaged, other with crack off rim.*

Provenance: From a Boston area collection.

Estimate: 30.00 - 50.00

Price Realized: 23.40



Lot 778

ASSORTED PANELED PRESSED DOUBLE SALTS, LOT OF TWO, blue/green and light electric blue, one with six-sided bowls, other with seven-sided bowls, each with center toothpick-holder handle. 1880-1920. 2 1/2" and 3" HOA, 2" x 4 3/4" and 2" x 5 1/2". *Undamaged. Blue/green example with potstone having refracting lines in base, as made.*

Provenance: From a Boston area collection.

Estimate: 50.00 - 100.00

Price Realized: 11.70



Lot 779

RIBBED PRESSED OPEN SALT, alabaster/clambroth, plain rim, raised on an eight-scallop foot with all-over beads under base. 1850-1870. 1 1/2" H, 3" D rim. *Undamaged.*

Provenance: From a Boston area collection.

Estimate: 50.00 - 100.00

Price Realized: 93.60



Lot 780

HEAVY PANEL AND PRISM PRESSED OPEN SALT, medium violet blue, circular form with six panels alternating with prisms, conforming scallop-and-point rim, heavy rayed base. Probably United States. 1850-1870. 1 1/4" H, 3" D. *Rim with some light flaking/moderate mold roughness.*
Provenance: From a Boston area collection.

Estimate: 50.00 - 100.00
Price Realized: 35.10



Lot 780a

HAIRPIN / SANDWICH LOOP PRESSED OPEN SALT, deep, brilliant electric blue, circular bowl with pattern repeated ten times and with plain rim, raised on a ten-sided foot with polished table ring. Possibly Boston & Sandwich Glass Co. 1850-1870. 1 1/2" H, 2 3/4" D rim, 1 7/8" DOA foot. *Undamaged.*
Provenance: From a Boston area collection.

Estimate: 80.00 -120.00
Price Realized: 152.10



Lot 781

PRISM AND BEAD PRESSED OPEN SALT, deep cobalt blue, circular form with beads below the plain rim and around the base, rayed under base. Probably United States. 1850-1880. 1 1/2" H, 2 3/4" D rim. *Undamaged except for two minute flakes under base.*
Provenance: From a Boston area collection.

Estimate: 50.00 - 100.00
Price Realized: 152.10



Lot 782

SMOCKING PRESSED OPEN SALT, translucent powder blue, 12-sided bowl with plain rim, raised on a nine-sided foot with rays to underside and polished table ring. 1850-1870. 1 5/8" H, 2 3/4" D bowl, 1 3/4" D foot. *Undamaged.* Literature: Parallels Jzyk/Robertson - The Open Salt Compendium, p. 248, pl. 750.
Provenance: From a Boston area collection.

Estimate: 50.00 - 100.00
Price Realized: 93.60



Lot 783

NINE-FLUTE ROLL-OVER PRESSED OPEN SALT, deep cobalt blue, produced from a whisky tumbler mold with rim rolled over, base with polished table ring. Probably United States. 1850-1870. 2" H, 3" D rim, 2" D base. *Undamaged except for two small shallow chips under base, possibly as made, light basal residue.*
Provenance: From a Boston area collection.

Estimate: 80.00 - 120.00
Price Realized: 152.10



Lot 784

PEACOCK FEATHER VARIANT PRESSED OPEN SALT, deep violet blue, bowl with 13 narrow vertical panels of three scales, conforming scallop and point rim, raised on a flared circular foot unpatterned underneath. Similar to Neal PP-4. Probably New England. 1835-1850. 1 3/4" H, 3" DOA rim, 2" D base. *Near proof with only a minor flake to one rim point and some light mold roughness to tips of scallops.* Literature: Jzyk/Robertson - The Open Salt Compendium, p. 248, pl. 750. Provenance: From a Boston area collection.

Estimate: 100.00 - 150.00

Price Realized: 152.10



Lot 785

HEAVY FLATTENED DIAMOND PRESSED OPEN SALT, medium green, circular form with sawtooth rim, raised on a hexagonal foot. United States. 1840-1860. 2 1/2" H, 3 1/4" DOA, 2 5/8" DOA base. *Undamaged.* Provenance: From a Boston area collection.

Estimate: 80.00 - 120.00

Price Realized: 438.75



Lot 786

HEAVY BEEHIVE PRESSED OPEN SALT, opaque white with mottled and swirled blue, rectangular form with curved, even-scallop rim above two conforming ribs, base with three ribs flanked by a ridge on each end. Possibly Boston & Sandwich Glass Co. 1827-1835. 2" H, 2 1/8" x 3 1/4". *Crack circling entire salt between middle ribs, top and edge rim chips.* Literature: Spillman - Corning, p. 242, fig. 944 and color pl. 9. Parallels Barlow/Kaiser - The Glass Industry in Sandwich, vol. 1, p. 278, fig. 1436. Provenance: From a Boston area collection. Jeffrey S. Evans (T/A GVA), 9/24/05, lot 1519. Ex-collection of Dr. Marvin Engle.

Estimate: 50.00 - 100.00

Price Realized: 152.10



Lot 787

HEAVY HEXAGONAL PRESSED OPEN SALT, brilliant peacock blue/teal, low footed form with plain panels. United States. 1850-1870. 2" H, 3" DOA. *Undamaged. Minute flakes/mold roughness under foot, as made.* Provenance: From the collection of the late Ken Lyon of Fishers Hill, VA.

Estimate: 50.00 - 100.00

Price Realized: 70.20



Lot 788

HEAVY HEXAGONAL PRESSED OPEN SALT, deep plum purple, urn-form with plain rim, raised on a circular foot with a hexagonal step, plain base. United States. 1840-1870. 3 1/4" H, 3 1/8" DOA rim, 2 1/4" DOA foot. *Excellent condition overall with scattered flaking and roughness to the rim top edge.* Provenance: From a Boston area collection.

Estimate: 50.00 - 100.00
Price Realized: 46.80



Lot 789

HEAVY HEXAGONAL PRESSED OPEN SALT, deep amethyst, urn form with conforming large scallop and point rim, raised on a high hexagonal foot with rough pontil ring. United States. 1840-1860. 2 7/8" H, 3 1/4" DOA rim, 2 1/4" DOA base. *Foot with two shallow chips to outer edge and a few scattered flakes.* Provenance: From a Boston area collection.

Estimate: 50.00 - 100.00
Price Realized: 140.40



Lot 790

HEAVY HEXAGONAL PRESSED OPEN SALT, deep sapphire blue, urn-form with plain rim, raised on a conforming foot with polished pontil mark. New England and Midwestern. 1840-1870. 3 1/8" H, 3 3/8" DOA rim, 2 1/2" DOA foot. *Undamaged except for a flake to one foot corner, and two flakes and minor mold roughness to underside of foot.* Literature: Parallels Spillman - Corning, p. 243, fig. 951. Provenance: From a Boston area collection.

Estimate: 50.00 - 100.00
Price Realized: 70.20



Lot 790a

HEAVY HEXAGONAL PRESSED OPEN SALT, brilliant apple green, low form with step at top of stem, raised on a conforming foot, polished pontil mark. Probably New England. 1850-1870. 2" H, 3" DOA rim, 2 1/8" DOA foot. *Undamaged except for two minor flakes to underside of foot.* Literature: Parallels Jzyk/Robertson - The Open Salt Compendium, p. 249, pl. 753. Provenance: Property from the Dexter Charles Wright estate collection, Ponte Vedra, FL.

Estimate: 50.00 - 100.00
Price Realized: 117.00



Lot 791

HEAVY HEXAGONAL PRESSED OPEN SALT, fiery opalescent, urn form with stepped plain rim, raised on a conforming stem and circular foot. Probably Midwestern. 1840-1860. 3" H, 3 1/2" DOA rim, 2 3/8" D base. *Undamaged with just a hint of mold roughness.* Literature: Parallels Innes - Pittsburgh Glass, p. 363, pl. 399, fig. 2; and Jzyk/Robertson - The Open Salt Compendium, p. 250, pl. 755. Provenance: From a Boston area collection.

Estimate: 50.00 - 100.00

Price Realized: 234.00



Lot 792

HEAVY HEXAGONAL PRESSED OPEN SALT, ice blue, urn form with stepped plain rim, raised on a conforming stem and circular foot. Probably Midwestern. 1840-1860. 3" H, 3 1/2" DOA rim, 2 3/8" D base. *Excellent condition, shallow chip under rim and a minor flake to underside of three rim points.* Literature: Parallels Innes - Pittsburgh Glass, p. 363, pl. 399, fig. 2; and Jzyk/Robertson - The Open Salt Compendium, p. 250, pl. 755. Provenance: From a Boston area collection.

Estimate: 50.00 - 100.00

Price Realized: 105.30



Lot 793

HEAVY HEXAGONAL PRESSED OPEN SALT, deep amethyst, urn form with stepped plain rim, raised on a conforming stem and circular foot with rough pontil mark. Probably Midwestern. 1840-1860. 3" H, 3 1/2" DOA rim, 2 3/8" D base. *Excellent condition, three flakes to underside of foot and minor wear to several points.* Literature: Innes - Pittsburgh Glass, p. 363, pl. 399, fig. 2. Parallels Jzyk/Robertson - The Open Salt Compendium, p. 250, pl. 755. Provenance: From a Boston area collection. Ex-collection of Paul and Gladys Richards (retains collection label).

Estimate: 50.00 - 100.00

Price Realized: 152.10



Lot 794

HEAVY HEXAGONAL PRESSED OPEN SALT, deep cobalt blue, urn form with stepped plain rim, raised on a conforming stem and circular foot. Probably Midwestern. 1840-1860. 3" H, 3 1/2" DOA rim, 2 3/8" D base. *Excellent condition with light roughness to points, plus some mold roughness.* Literature: Parallels Innes - Pittsburgh Glass, p. 363, pl. 399, fig. 2; and Jzyk/Robertson - The Open Salt Compendium, p. 250, pl. 755. Provenance: From a Boston area collection.

Estimate: 50.00 - 100.00

Price Realized: 140.40



Lot 795

HEAVY HEXAGONAL PRESSED OPEN SALT, brilliant apple green, urn form with plain rim, raised on a conforming, stepped foot with polished table ring. United States. 1840-1860. 2 1/2" H, 3" DOA rim, 2" DOA base. *Undamaged.*

Provenance: From a Boston area collection.

Estimate: 80.00 - 120.00

Price Realized: 292.50



Lot 796

RIBBED MOSAIC PRESSED OPEN SALT, opal and amethyst slag, oblong form with convex sides and ends, and concave corners, plain rim, rayed base. United States. 1870-1890. 1 1/4" H, 2 1/2" x 3 1/2". *Undamaged except for a few minute flakes to rim. Short rim check, as made.*

Provenance: From a Boston area collection.

Estimate: 50.00 - 80.00

Price Realized: 23.40



Lot 797

INVERTED WAFFLE PRESSED OPEN SALT, deep cobalt blue, oblong octagonal form with a stepped shoulder and tiny even-scallop rim. More heavy and crudely pressed than normally seen in this salt. Boston & Sandwich Glass Co. 1840-1860. 1" H, 2 3/4" x 3 1/4". *Undamaged with overfill mold roughness under rim.* Literature: Parallels Barlow/Kaiser - The Glass Industry in Sandwich, vol. 1, p. 290, fig. 1472.

Provenance: From a Boston area collection.

Estimate: 50.00 - 100.00

Price Realized: 70.20



Lot 798

OCTAGONAL PANELED PRESSED OPEN SALT, medium blue, plain rim, raised on a conforming domed foot. Probably United States. 1840-1860. 2" H, 3" DOA rim, 1 3/4" D foot. *Excellent condition with only a few minute flakes to rim and a flake to underside of foot.*

Provenance: From a Boston area collection.

Estimate: 50.00 - 100.00

Price Realized: 105.30



Lot 799

FLUTE AND RIB PRESSED OPEN SALT, bright green, rectangular form with plain rim and waffle base. Probably United States. 1850-1870. 1 1/4" H, 2 3/8" x 3". *Undamaged with just a hint of mold roughness.* Provenance: From a Boston area collection.

Estimate: 50.00 - 100.00
Price Realized: 81.90



Lot 800

HEAVY RIBBED CURTAIN PRESSED OPEN SALT, opaque powder blue, rectangular form with even-scallop rim and scallop-edge base rayed underneath. Probably United States. 1840-1860. 1 1/2" H, 2 3/8" x 3 3/8". *Shallow top-rim chip to one scallop, otherwise undamaged.* Literature: Parallels Jzyk/Robertson - The Open Salt Compendium, p. 249, pl. 751. Provenance: From a Boston area collection.

Estimate: 50.00 - 100.00
Price Realized: 93.60



Lot 800a

HORIZONTAL RIBBED PRESSED OPEN SALT, light blue, rectangular form with plain rim, raised on a conforming foot with long ribs to underside. United States. 1840-1860. 1 1/2" H, 1 3/4" x 3". *Excellent as-made condition, moderate mold roughness to rim, rough open bubble to inner rim, sliver flake to two ribs.* Provenance: From a Boston area collection.

Estimate: 50.00 - 100.00
Price Realized: 198.90



Lot 801

HEAVY SHORT RIB PRESSED OPEN SALT, opaque white showing fiery opalescent at edges, rectangular form with upright even-scallop rim and conforming stepped foot, plain base. United States. 1830-1850. 2" H, 2" x 3". *Virtually proof with only a minute flake to two corners of base.* Provenance: From a Boston area collection.

Estimate: 100.00 - 150.00
Price Realized: 140.40



Lot 802

RAYED PANEL PRESSED OPEN SALT, medium green, oblong octagonal form with scallop rim, inverted diamond base. United States. 1840-1860. 7/8" H, 2 1/2" x 3 1/4". *Undamaged except for a shallow chip to underside of two scallops.* Provenance: From a Boston area collection.

Estimate: 50.00 - 100.00
Price Realized: 58.50



Lot 803

RIBBED CONCAVE PANEL PRESSED OPEN SALT, deep cobalt blue, rectangular form with smooth rim conforming to body, rayed base. Probably United States. 1850-1870. 1" H, 2 1/2" x 3 5/8". *Undamaged with just a hint of mold roughness.*

Provenance: From a Boston area collection.

Estimate: 50.00 - 100.00

Price Realized: 58.50



Lot 804

FINE RIBBED PRESSED DOUBLE SALT, opalescent, each three-lobe bowl with plain rim, centering a ring-like handle, raised on four rounded feet, rayed under each base and under handle. 1850-1875. 2 7/8" HOA, 3" x 4 5/8". *Undamaged except for a very shallow chip to rim.* Literature: Parallels Heacock/Johnson - 5,000 Open Salts, p. 191, fig. 3809.

Provenance: From a Boston area collection.

Estimate: 50.00 - 100.00

Price Realized: 23.40



Lot 805

SAWTOOTH FOOTED PRESSED OPEN SALT, medium blue, circular foot with a 20-petal florette to the underside. United States. 1850-1880. 3" H, 3" D rim, 2 1/2" D foot. *Undamaged except for a few minute flakes.*

Provenance: From a Boston area collection.

Estimate: 50.00 - 100.00

Price Realized: 81.90



Lot 806

SWIRLED RIBS AND RAYS PRESSED OPEN SALT, cobalt blue, oval form, ribs alternate with three fine rays, base with tiny diamonds, embossed "79" to interior base. 1840-1870. 1 3/8" H, 2 1/8" x 2 7/8". *Undamaged except for a small spall to underside of base, probably as made.*

Provenance: From a Boston area collection.

Estimate: 50.00 - 100.00

Price Realized: 105.30



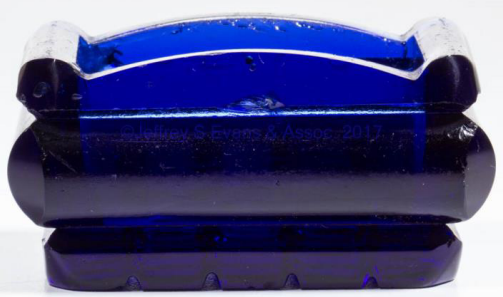
Lot 807

DOUBLE THUMBPRINT AND GROOVE PRESSED OPEN SALT, amethyst, rectangular form with plain rim, pattern repeated 14 times around body, base with rayed X design. United States. 1840-1860. 1 1/2" H, 2 3/8" x 3 3/8". *Rim with moderate chip at one corner, otherwise only some scattered light flaking/mold roughness.*

Provenance: From a Boston area collection.

Estimate: 50.00 - 80.00

Price Realized: 58.50



Lot 808

HEAVY PRESSED OPEN SALT, deep cobalt blue, rectangular form with arched and rolled rim above a wide horizontal rib, base with irregular waffle pattern. Possibly Boston & Sandwich Glass Co. 1830-1850. 1 1/2" H, 1 3/4" x 3". *Two shallow chips to underside of rim, polishing to outer edge of rim and corner.* Literature: Spillman - Corning, p. 241, fig. 942. Parallels Barlow/Kaiser - The Glass Industry in Sandwich, vol. 1, p. 279, fig. 1437a.

Provenance: From a Boston area collection.

Estimate: 50.00 - 80.00

Price Realized: 70.20



Lot 809

HEAVY BEEHIVE PRESSED OPEN SALT, light green, rectangular form with curved, even-scallop rim above two straight ribs, base with three ribs flanked by a ridge on each end. Boston & Sandwich Glass Co. and possibly others. 1827-1835. 1 3/4" H, 2 1/8" x 3 1/8". *Rim with chip to one corner and outside edge, plus normal flaking/mold roughness to rim and corners.* Literature: Barlow/Kaiser - The Glass Industry in Sandwich, vol. 1, p. 278, fig. 1436.

Provenance: From a Boston area collection.

Estimate: 50.00 - 80.00

Price Realized: 152.10



Lot 810

HEAVY CAPSTAN PRESSED OPEN SALT, canary yellow (black lighted), hexagonal form with grooved rim, raised on a six-petal foot. Boston & Sandwich Glass Co. and others. 1850-1875. 2 1/2" H, 3 5/8" DOA.

Undamaged except for two minute flakes to the underside of rim. Literature:

Barlow/Kaiser - The Glass Industry in Sandwich, vol. 1, p. 294, fig. 1485a.

Provenance: From a Boston area collection.

Estimate: 50.00 - 80.00

Price Realized: 58.50



Lot 810a

HEAVY CONCAVE PANEL AND PILLAR PRESSED OPEN SALT, light blue, conforming rim, base with all-over waffle pattern. United States. 1840-1860. 1 1/4" H, 2 5/8" x 3 1/4". *Excellent condition, several moderate flakes to top of rim, otherwise only some minor mold roughness.* Literature: Parallels Spillman - Corning, p. 242, fig. 943. Provenance: From a Boston area collection.

Estimate: 50.00 - 80.00

Price Realized: 117.00



Lot 811

HEAVY CONCAVE PANEL AND PILLAR PRESSED OPEN SALT, amethyst, conforming rim, base with all-over waffle pattern. United States. 1840-1860. 1 1/4" H, 2 5/8" x 3 1/4". *Average condition with shallow chips and flaking.* Literature: Parallels Spillman - Corning, p. 242, fig. 943. Provenance: From a Boston area collection.

Estimate: 50.00 - 80.00

Price Realized: 163.80



Lot 812

HEAVY CONCAVE PANEL AND PILLAR PRESSED OPEN SALTS, LOT OF TWO, pinkish alabaster/clambroth and colorless with green tint, each with conforming rim, base with all-over waffle pattern. United States. 1840-1860. 1 1/4" H, 2 5/8" x 3 1/4". *Above average condition with a few shallow chips to corners and some light flaking/mold roughness, clambroth example with a chip to edge of base.* Literature: Parallels Spillman - Corning, p. 242, fig. 943. Provenance: From a Boston area collection.

Estimate: 50.00 - 80.00

Price Realized: 35.10



Lot 813

HEAVY PANEL AND POST PRESSED OPEN SALT, light opalescent, rectangular form with scalloped and rolled rim, unpatterned ends, base with 12-point star and four raised feet. United States. 1830-1850. 1 1/2" H, 2 1/8" x 3 1/8". *Rim with shallow chip to one end, otherwise only a few scattered flakes.* Provenance: From a Boston area collection.

Estimate: 50.00 - 80.00

Price Realized: 35.10



Lot 814

SMOCKING PRESSED OPEN SALT,
blue-green, circular form raised on a scalloped foot. Maker unverified. 1850-1880. 2 1/4" H, 2 1/2" D. *Nearly undamaged with minute flaking to the base edge.*
Provenance: Collection of Douglas Reed, Maplewood, NJ.

Estimate: 50.00 - 80.00
Price Realized: 58.50



Lot 815

HEAVY DRAPE PRESSED OPEN SALT,
pale aquamarine, crude oval form with rim conforming to eight groups of three drapes surrounding the body, conforming lobbed base without central bead. United States. 1840-1860. 1 1/2" H, 2 1/4" x 3 1/4". *Excellent condition, rim with a shallow chip/mold roughness and scattered flaking.* Literature: Parallels Spillman - Corning, p. 242, fig. 948.
Provenance: From a Boston area collection.

Estimate: 30.00 - 50.00
Price Realized: 93.60



Lot 816

HEAVY PRESSED OPEN SALTS, LOT OF TWO,
cobalt blue and colorless with strong amethyst striations, each circular egg and dart pattern rim above an octagonal stepped body, base with 16-point star. United States. 1840-1860. 1 1/2" H, 3" D. *Blue example undamaged but with a 1 1/4" annealing check above base, other example with moderate wear and two flakes under base.* Literature: Spillman - Corning, p. 241, fig. 937.
Provenance: From a Boston area collection.

Estimate: 80.00 - 120.00 Price Realized: 105.30



Lot 817

INVERTED WAFFLE PRESSED OPEN SALTS, LOT OF 3, deep amethyst and red amber, each oblong octagonal form with a stepped shoulder and tiny even-scallop rim. Boston & Sandwich Glass Co. 1840-1860. 1" H, 2 1/2" x 3 1/4". *Amber and one amethyst example proof except for a few minute flakes, other amethyst near proof with a flake to one side scallop and several minute top-rim flakes.* Literature: Barlow/Kaiser - The Glass Industry in Sandwich, vol. 1, p. 290, fig. 1472.

Provenance: Collection of Douglas Reed, Maplewood, NJ.

Estimate: 80.00 - 120.00

Price Realized: 105.30



Lot 818

ASSORTED HEAVY PRESSED OPEN SALTS / RELATED ARTICLES, LOT OF THREE, medium sapphire and cobalt blue, comprising an octagonal example with upright rim and flared base, and two circular examples, one with thumbprints, other with bars, grooves, and concave panels. United States and possibly others. 1850-1880. 1 1/2" to 2 1/8" H, 3" to 4" DOA. *Octagonal example undamaged, thumbprint example with heavy rim wear, other with a sizable chip to edge of base.*

Provenance: From a Boston area collection.

Estimate: 50.00 - 100.00

Price Realized: 35.10



Lot 819

ASSORTED HEAVY PRESSED OPEN SALTS, LOT OF 3, canary yellow (black lighted), each of hexagonal form, two flat and one with scalloped base. United States. 1850-1870. 1 1/2" to 2 1/2" H, 2" to 3 1/4" D rims. *Each with a minor to moderate chip, two with light to moderate wear.*

Provenance: From a Boston area collection.

Estimate: 50.00 - 100.00

Price Realized: 70.20



Lot 820

ASSORTED HEAVY HEXAGONAL PRESSED OPEN SALTS, LOT OF TWO, comprising a clamwater example with petals at the rim and under the bowl, raised on a circular foot, and a smoke color example with plain rim and conforming foot. United States. 1850-1870. 2 7/8" H, 3 1/4" and 3 1/2" DOA rims. *Clamwater example with a flake to edge of foot and polishing under rim, other with some scattered flakes.*

Provenance: From a Boston area collection.

Estimate: 50.00 - 80.00

Price Realized: 46.80



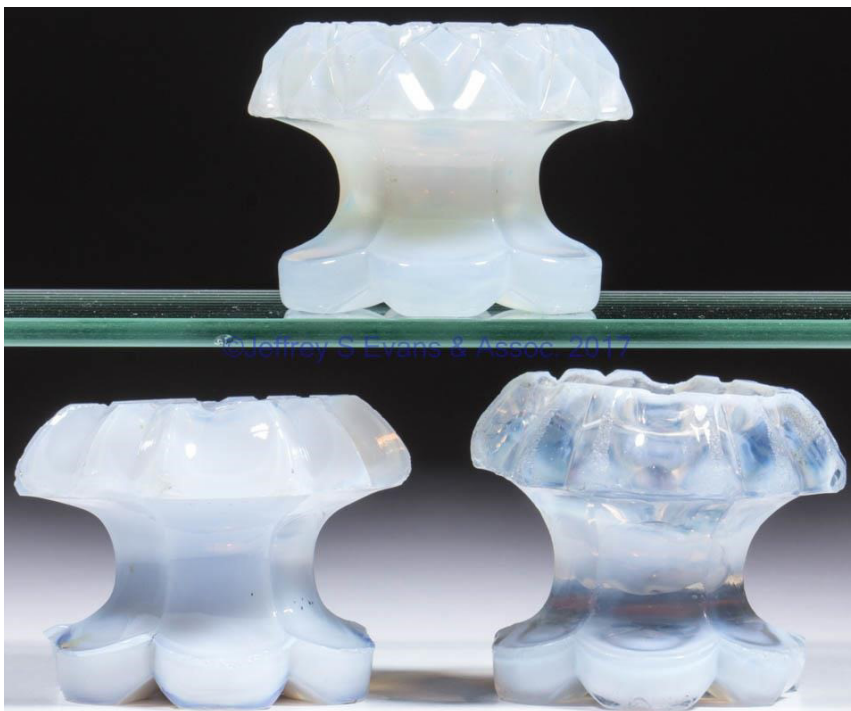
Lot 820a

HEAVY PANELED ARCHES PRESSED OPEN SALTS, LOT OF TWO, cobalt blue and translucent turquoise blue, each hexagonal form with stepped plain rim and 12-petal rosette in base. United States. 1850-1870. 1 3/4" H, 3" DOA rims. *Turquoise example with light mold roughness/wear, cobalt example with light to moderate flaking/mold roughness.*

Provenance: From a Boston area collection.

Estimate: 80.00 - 120.00

Price Realized: 175.50



Lot 821

ASSORTED HEAVY CAPSTAN PRESSED OPEN SALTS, LOT OF THREE, fiery opalescent, comprising an example with diamond-pattern rim, and two with concave panel and groove rim, each raised on a six-petal foot. Boston & Sandwich Glass Co. and others. 1850-1875. 2 1/4" to 2 1/2" H. *Diamond example with moderate inner-rim roughness, others with some heavy chipping and roughness.* Literature: Parallels Barlow/Kaiser - The Glass Industry in Sandwich, vol. 1, p. 294, fig. 1485a.

Provenance: From a Boston area collection.

Estimate: 50.00 - 100.00

Price Realized: 81.90



Lot 822

ASSORTED FACETTED PRESSED OPEN SALTS, LOT OF 2, medium blue and deep ruby, each with plain rim and star base, ruby example with prisms to lower body. 1870-1900. 1 1/8" and 1 1/2" H, 3" and 3 1/2" DOA. *Undamaged except for a few minute flakes to points.* Provenance: From a Boston area collection.

Estimate: 50.00 - 80.00

Price Realized: 70.20



Lot 823

HEAVY HEXAGONAL PRESSED OPEN SALTS, LOT OF 2, light sapphire blue and light green, each urn-form with plain rim, raised on a conforming foot, one with rough pontil mark. New England and Midwestern. 1840-1870. 2 3/4" to 3" H, 3 1/2" DOA rims. *Blue example with moderate chip to one corner of foot, green with a shallow chip and scattered flakes to rim.* Literature: Parallels Spillman - Corning, p. 243, fig. 951.

Provenance: From a Boston area collection.

Estimate: 50.00 - 100.00

Price Realized: 81.90



Lot 824

HEAVY HEXAGONAL PRESSED OPEN SALTS, LOT OF 2, medium amethyst and swirling fiery opalescent, each urn-form with plain rim, raised on a conforming foot. New England and Midwestern. 1840-1870. 2 3/4" H, 3" DOA rims. *Excellent condition, each rim with some scattered minor flakes/mold roughness.* Literature: Parallels Spillman - Corning, p. 243, fig. 951.

Provenance: From a Boston area collection.

Estimate: 80.00 - 120.00

Price Realized: 105.30



Lot 825

HEAVY HEXAGONAL PRESSED OPEN SALTS, LOT OF 2, canary yellow (black lighted) and teal/peacock blue, each urn-form with plain rim, raised on a conforming foot. New England and Midwestern. 1840-1870. 2 3/4" H, 3" DOA rims. *Canary example with light/minute flaking/mold roughness to rim, teal example with lightly polished rim and interior residue/wear.* Literature: Parallels Spillman - Corning, p. 243, fig. 951.

Provenance: From a Boston area collection.

Estimate: 50.00 - 100.00

Price Realized: 128.70



©Jeffrey S Evans & Assoc. 2017

Lot 826

HEAVY HEXAGONAL PRESSED OPEN SALTS, LOT OF 2, amethyst and deep plum purple, each urn-form with plain rim, raised on a conforming foot, one with rough pontil mark. New England and Midwestern. 1840-1870. 2 7/8" to 3" H, 3 1/2" DOA rims. *Excellent condition, amethyst example with a shallow chip and several flakes to underside of foot, purple example with a minute flakes to rim and a sliver chip to one corner below rim.* Literature: Parallels Spillman - Corning, p. 243, fig. 951.

Provenance: From a Boston area collection.

Estimate: 80.00 - 120.00

Price Realized: 175.50



©Jeffrey S Evans & Assoc. 2017

Lot 827

ASSORTED HEAVY LOBED PRESSED OPEN SALTS, LOT OF TWO, frosted canary yellow (black lighted) and pale amber, comprising a rectangular divided example with 14 lobes, and a circular example with ten lobes, each with star base. 1860-1890. 1 3/4" and 1 7/8" HOA, 4" DOA and 2 7/8" x 4". *Undamaged except for a shallow chip to rim of divided example.*

Provenance: From a Boston area collection.

Estimate: 50.00 - 100.00

Price Realized: 46.80



©Jeffrey S Evans & Assoc. 2017

Lot 828

ASSORTED HEAVY PRESSED OPEN SALTS, LOT OF 3, canary yellow (black lighted), comprising a circular example with diamonds below the plain shoulder, and two oval examples, one with thumbprints above diamonds, and other with large prisms above diamonds, each with rayed/star base. 1860-1880. 1 5/8" to 2" H, 3 1/2" to 4 1/4" WOA. *Above average condition, free of rim chips/roughness, oval examples with light roughness/flaking to medial body, circular example with moderate roughness to medial body.*

Provenance: From a Boston area collection.

Estimate: 50.00 - 100.00

Price Realized: 58.50



Lot 829

HEAVY PANEL AND PRISM PRESSED OPEN SALTS, LOT OF TWO, deep amethyst and deep plum purple, each hexagonal form with plain rim and rayed base. United States. 1850-1870. 1 1/2" H, 2 7/8" D rims. *One with a sliver chip to an outer corner, each with light to moderate flaking/mold roughness.*
Provenance: From a Boston area collection.

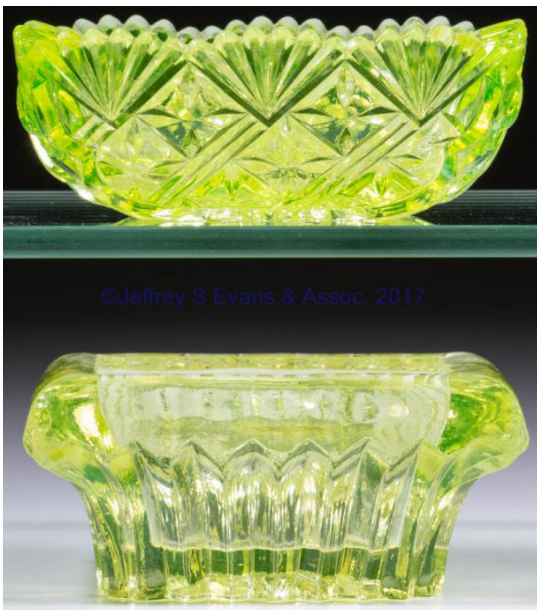
Estimate: 50.00 - 100.00
Price Realized: 35.10



Lot 830

HEAVY PANEL AND PRISM PRESSED OPEN SALTS, LOT OF TWO, steel blue and deep fiery opalescent, each hexagonal form with plain rim and rayed base. United States. 1850-1870. 1 1/2" H, 2 3/4" DOA rims. *Moderate flaking/mold roughness to rims and tops of panels.*
Provenance: From a Boston area collection.

Estimate: 50.00 - 80.00
Price Realized: 81.90



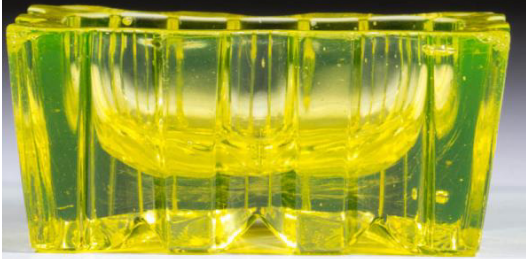
Lot 830a

ASSORTED RECTANGULAR PRESSED OPEN SALTS, LOT OF TWO, canary yellow (black lighted), comprising an example with heavy prisms below the plain rim, and a Hobbs No. 102 / Maltese and Ribbon example with scalloped rim. Hobbs, Brockunier & Co. and others. 1860-1890. 1 1/4" and 1 3/4" H, 2 1/2" x 3 1/2" and 2 3/4" x 3 1/4". *Maltese example undamaged, other with moderate roughness to underside of rim.*
Provenance: From a Boston area collection.

Estimate: 50.00 - 80.00
Price Realized: 81.90



©Jeffrey S Evans & Assoc. 2017



Lot 831

HEAVY RECTANGULAR PRESSED OPEN SALTS, LOT OF TWO, bright canary yellow (black lighted), comprising a Panelled Ovals with conforming rim and rayed base, and a Bar and Concave with plain rim and grooved base, each with polished base. United States. 1850-1875. 1 1/2" H, 2 3/8" x 3 3/8" panelled, 2 1/2" x 3 1/2" ovals. *Bar example with only roughness to rim corners, Ovals example with moderate chipping to rim.*

Provenance: From a Boston area collection.

Estimate: 30.00 - 50.00

Price Realized: 58.50



©Jeffrey S Evans & Assoc. 2017

Lot 832

HEAVY HEXAGONAL PRESSED OPEN SALTS, LOT OF THREE, pale blue, medium amber, and medium blue, each of urn form with stepped plain rim, raised on a conforming stem and circular foot. Probably Midwestern. 1840-1860. 3" H, 3 1/2" DOA rims, 2 1/2" D feet. *Each with minor to moderate chipping.*

Literature: Parallels Innes - Pittsburgh Glass, p. 363, pl. 399, fig. 2; and Jzyk/Robertson - The Open Salt Compendium, p. 250, pl. 755.

Provenance: From a Boston area collection.

Estimate: 50.00 - 100.00

Price Realized: 152.10

Lot 833

HEAVY HEXAGONAL PRESSED OPEN SALTS, LOT OF 2, canary yellow (black lighted) and deep cobalt blue, each of low form with step at top of stem, raised on a conforming foot. United States. 1850-1870. 1 7/8" and 2" H, 2 7/8" DOA rims. *Canary example with flake to edge of foot and area of inner-rim mold roughness, blue with some minute flakes under foot.* Literature: Parallels Jzyk/Robertson - The Open Salt Compendium, p. 249, pl. 753. Provenance: From a Boston area collection.

Estimate: 50.00 - 100.00

Price Realized: 46.80



Lot 834

ASSORTED PEDESTAL PRESSED OPEN SALTS / RELATED ARTICLES, LOT OF 3, comprising a fiery opalescent Nine-Panel and Bead salt, a cobalt blue Ellipse egg cup/salt, and a cobalt blue Notched Prism and Ball toy compote. 1850-1900. 2" to 3" H, 2" to 2 5/8" D rims. *Undamaged, egg cup with spalls under base associated with the pontil ring.* Provenance: From a Boston area collection.

Estimate: 50.00 - 100.00

Price Realized: 152.10



Lot 835

ASSORTED RECTANGULAR PRESSED OPEN SALTS, LOT OF THREE, comprising an electric blue example with ribbed rim and inverted-waffle base, an opaque white example with all-over exterior waffle pattern, and a mosaic/purple slag example with floral pattern. 1870-1910. 1 1/4" to 3" H. *White example undamaged, blue with minor inner-rim flake, mosaic with annealing crack off rim.* Provenance: From a Boston area collection.

Estimate: 50.00 - 100.00

Price Realized: 23.40





Lot 836

ASSORTED PRESSED OPEN SALTS, LOT OF THREE, comprising a cobalt blue oval Bigler, and cobalt blue and colorless Inverted Waffle examples. Boston & Sandwich Glass Co. and others. 1840-1860. 1" and 1 1/2" H. *Bigler with two shallow chips to outer edge of rim at one end, colorless Waffle with only a few minute flakes, cobalt example with two shallow rim chips and minor flaking.*

Provenance: Property from the Dexter Charles Wright estate collection, Ponte Vedra, FL.

Estimate: 50.00 - 80.00

Price Realized: 70.20



Lot 837

ASSORTED PRESSED OPEN SALTS, LOT OF FIVE, colorless and cobalt blue, including four hexagonal footed examples with polished pontil marks. Boston & Sandwich Glass Co. and others. 1830-1870. 1 3/4" to 3 1/2" H. *Blue example with a moderate shallow chip to top of rim, other hexagonal examples undamaged, rectangular example with moderate chipping.*

Provenance: Property from the Dexter Charles Wright estate collection, Ponte Vedra, FL.

Estimate: 50.00 - 80.00

Price Realized: 70.20



Lot 838
 ASSORTED HEAVY PRESSED OPEN SALTS, LOT OF 15,
 colorless, mostly hexagonal forms, including Loop/Leaf. Second half 19th century. Various sizes. *Above average overall condition, some with chipping/wear.* Provenance: Collection of Douglas Reed, Maplewood, NJ.

Estimate: 50.00 - 80.00 Price Realized: 105.30



Lot 839
 HEAVY HEXAGONAL PRESSED OPEN SALTS, LOT OF THREE,
 each footed, comprising steel blue and cobalt blue low examples, and a sapphire blue urn-form example. United States. 1850-1870. 2" and 3" H. *Cobalt example undamaged with some interior residue, other low example with flake to interior of bowl, urn example with moderate chipping to rim.* Provenance: From the collection of the late Ken Lyon of Fishers Hill, VA.

Estimate: 50.00 - 80.00 Price Realized: 35.10



Lot 840

HEAVY HEXAGONAL PRESSED OPEN SALTS, LOT OF TWO, canary yellow (black lighted), each of low footed form, one with an oval in each panel. United States. 1850-1870. 1 7/8" and 2" H, 3" DOA. *Undamaged except for a minor flake to each.* Provenance: From the collection of the late Ken Lyon of Fishers Hill, VA.

Estimate: 50.00 - 80.00
Price Realized: 58.50



Lot 840a

HEAVY HEXAGONAL PRESSED OPEN SALTS, LOT OF TWO, comprising an amethyst low example and a sapphire blue urn-form example, each raised on a conforming foot. United States. 1850-1870. 2" and 3" H. *Amethyst example undamaged except for a minute flake to rim, blue example with a moderate bruise to inner rim and scattered flakes to underside to rim.* Provenance: Collection of Douglas Reed, Maplewood, NJ.

Estimate: 50.00 - 80.00
Price Realized: 81.90



Lot 841

ASSORTED PRESSED OPEN SALTS, LOT OF TWO, each of rectangular form, comprising a deep cobalt blue example with arched and rolled rim above a wide horizontal rib, base with irregular waffle pattern; and a violet example with ogee panels, plain rim, and base having a central bead surrounded by 12 rays, like Lee/Rose nos. 323-326 cup plates. 1830-1860. 1 1/2" and 1 3/4" H. *Fair condition, blue example with significant chip to several corners and flaking, violet example with a 1" crack off rim and flaking.* Provenance: From a Boston area collection.

Estimate: 30.00 - 50.00
Price Realized: 35.10



©Jeffrey S Evans & Assoc. 2017



Lot 842

ASSORTED HEAVY PRESSED OPEN SALTS, LOT OF SIX, colorless, including a sofa-form and pair of horizontal ribbed with scalloped rim and waffle base. 1830-1870. Various sizes. *Average condition with normal chipping and roughness.* Provenance: Collection of Douglas Reed, Maplewood, NJ.

Estimate: 30.00 - 50.00

Price Realized: 23.40



Lot 853

ASSORTED PRESSED LACY ARTICLES, LOT OF THREE, honey amber and cobalt blue, comprising a footed open salt with rayed foot, and two toddy plates, each with even-scallop rim. 1830-1860. 2 3/8" H, 1 7/8" D rim; and 4 1/4" and 4 1/2" D. *Amber plate undamaged, others with a few minor flakes/mold roughness.*

Provenance: Collection of Douglas Reed, Maplewood, NJ.

Estimate: 50.00 - 80.00

Price Realized: 117.00



Lot 958

BELFLOWER - SINGLE VINE ARTICLES, LOT OF 3, colorless lead glass, comprising two wines and a footed open salt, each with the vines flowing right. Probably M'Kee & Brother(s). Third quarter 19th century. 2 3/4" to 4" H.

Undamaged with minor roughness to the edge of the salt's foot.

Provenance: Property of a New York private collector.

Estimate: 50.00 - 80.00

Price Realized: 46.80



Lot 966

FINE RIB / REEDED (OMN) BLOWN-MOLDED FOUR-BOTTLE CASTER SET, colorless lead glass, comprising two cruetts with non-original stoppers, a salt shaker with silver-plated lid, and a mustard with a silver-plated lid, fitted in period unmarked pewter stand intended for five bottles.

Together with a footed Fine Rib master salt. Two pieces total. Boston & Sandwich Glass Co., New England Glass Co., and possibly others. Third quarter 19th century. 9 3/4" HOA, bottles 5 5/8" to 8 5/8" HOA. *Faceted stopper with two sizeable chips to the extension and an additional chip to the tip of the stopper, other stopper with a chip, bottles undamaged, salt undamaged, stand nearly undamaged with a single split to the applied metal side and some minute denting.* Literature: Barlow/Kaiser - The Glass Industry in Sandwich, vol. 1, p. 173, fig. 1206.

Provenance: Property of a New York private collector.

Estimate: 50.00 - 80.00

Price Realized: 23.40



Lot 980

SANDWICH LOOP / GAINES ARTICLES, LOT OF 14, opaque white lead glass with some opalescence, including a covered sugar bowl, open sugar, two spoons, and an open salt. Boston & Sandwich Glass Co. 1850-1870. 1" to 7 1/4" HOA.

Scattered chipping to the covered sugar bowl, each sauce with minor to moderate roughness to the rim, remainder undamaged.

Provenance: Collection of Douglas Reed, Maplewood, NJ.

Estimate: 80.00 - 120.00

Price Realized: 81.90



Lot 983

ASSORTED EAPG GOBLETS, LOT OF FIVE, colorless lead glass, comprising three New England Pineapple and two Cable examples. Together with a New England Pineapple footed master salt. Six pieces total. Boston & Sandwich Glass Co. and others. Third quarter 19th century. Goblets 6 1/8" to 6 1/2" H, salt 2 3/4" H, 3" D rim. *Goblets undamaged, salt with a single chip to the rim.*

Provenance: Property of a New York private collector.

Estimate: 50.00 - 100.00

Price Realized: 70.20



Lot 994

ASSORTED GLASS ARTICLES, LOT OF TEN, comprising two flint compotes, a cranberry opalescent threaded finger bowl and undertray, and a white carnival glass S-Repeat small compote. 19th and 20th century. 8" DOA. *One flint compote with chip under foot, remainder undamaged.*

Provenance: Property of an English gentleman.

Estimate: 50.00 - 80.00

Price Realized: 105.30

Saturday, January 28



Lot 1370

ASSORTED ART GLASS OPEN SALTS, LOT OF 5, comprising a blue iridescent which is possibly Steuben Aurene, a Steuben attributed Green Jade, a Victorian cranberry with applied rigaree, a Smith Bros example, and an opaque white example with embossed floral decoration. Two spoons included. Various makers. Fourth quarter 19th/first quarter 20th century. 1 1/4" to 2" H. *Undamaged with the blue iridescent example possible having post-production polishing to the underside of the base.* Provenance: From the collection of the late Ken Lyon of Fishers Hill, VA.

Estimate: 80.00 - 120.00

Price Realized: 263.25



Lot 1388

EMILE GALLE CAMEO ART GLASS OPEN SALT, orange to colorless, signed "GALLE", polished pontil mark. France. Early 20th century. 1 3/4" H. *Undamaged.*

Estimate: 200.00 - 300.00
Price Realized: 468.00



Lot 1422

ASSORTED ART GLASS ARTICLES, LOT OF SIX, comprising a Peachblow diminutive creamer and bowl, a Burmese diminutive pitcher and vase signed "SGM", and two Pairpoint Tavern Glass diminutive tumblers. Various makers. 20th century. 1 3/8" to 3 1/8" H. *Undamaged.* Provenance: From the collection of the late Ken Lyon of Fishers Hill, VA.

Estimate: 50.00 - 100.00
Price Realized: 128.70



Lot 1691

ASSORTED GLASS ARTICLES, LOT OF TWO, comprising a colorless with fiery opalescence Panelled Ovals open salt, and an amber Christmas shaker with a period lid with patent information. Boston & Sandwich Glass Co. and others. Second half 19th century. 1 1/2" to 2 3/4" HOA. *Salt shaker undamaged, open salt with a moderate chip to the rim and scattered flakes, heavy high-point wear.*

Provenance: Property of a New York private collector.

Estimate: 50.00 - 80.00
Price Realized: 35.10



Lot 1747

VICTORIAN BLOWN GLASS OPEN SALT, cranberry, with an applied Vaseline (black lighted) rim, rigaree, and prunt to the base, fitted in a quadruple-plate base marked for "NEVADA SILVER" and numbered "5571". Probably English. Late 19th/early 20th century. 2 1/4" HOA, 2 1/2" DOA salt.

Undamaged.

Provenance: Collection of Lynn and Lonnie Sulzberger of Muscatine, IA.

Estimate: 50.00 - 100.00

Price Realized: 140.40



Lot 1890

PRESSED GLASS OPEN SALT SET, colorless, with two octagonal open salts, raised on a silver-plated stand. Maker unverified. Second half 19th century. 8" HOA, 3 1/4" H to top of salts, 2 3/4" x 6 3/4". *Undamaged, except one salt with two flakes to rim.*

Provenance: Collection of Lynn and Lonnie Sulzberger of Muscatine, IA.

Estimate: 80.00 - 120.00

Price Realized: 46.80



Lot 1893

GREENTOWN WHEELBARROW OPEN SALT, amber. Indiana Tumbler & Goblet Co. Early 20th century. 1 7/8" H. *Undamaged.* Literature: Literature: NGGA/Measell (ed.) - Greentown Glass: A Collector's Guide, p. 110, fig. Q.

Provenance: Property of a New York private collector.

Estimate: 50.00 - 100.00

Price Realized: 210.60



Lot 1894

ASSORTED PRESSED GLASS OPEN SALTS, LOT OF 4, colorless, blue, and Vaseline (black lighted), comprising a Railroad Car, a Wildflower, a Two Panel, and a Barley Wheelbarrow. Various makers. Late 19th/early 20th century. 1" to 2" H. *Wildflower and Two Panel undamaged, remainder with minor to moderate mold roughness including an isolated chip.* Provenance: Property of a New York private collector.

Estimate: 50.00 - 100.00
Price Realized: 117.00



Lot 1903

ASSORTED PRESSED GLASS FIGURAL TABLE ARTICLES, LOT OF SIX, comprising a Vaseline (black lighted) Bird with Cherry mustard jar with original cover, a Vaseline (black lighted) Bird with Cherry open salt, a pair of colorless opalescent Bird with Cherry salts, and a pair of colorless Pair of Shoes open salts. Late 19th/early 20th century. 1 1/4" to 3 3/8" HOA. *Bird with Cherry examples undamaged, except one colorless opalescent salt with a single minor flake to tail, each Pair of Shoes example with a single minor flake to rim.* Literature: Bird with Cherry examples parallel the Sandfords - Victorian Glass Novelties, p. 105, middle left; Pair of Shoes as ibid, 178, top left. Provenance: Collection of Douglas Reed, Maplewood, NJ.

Estimate: 30.00 - 50.00
Price Realized: 58.50