

Jeffrey S. Evans & Associates

Email: info@jeffreysevans.com

Website: www.jeffreysevans.com

Mailing Address:

P.O. Box 2638

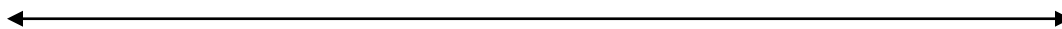
Harrisonburg, VA 22801

Gallery Location & Shipping Address:

2177 Green Valley Lane

Mt. Crawford, VA 22841

Formerly Green Valley Auctions, Inc.



**All auction information and images that follow are
courtesy of Jeffrey S. Evans & Associates
and is used here with their permission.**

**The same information may be found on their website.
Only open salt and related lots are shown here for the
benefit of open salt collectors. No further use of
information or images without permission of
Jeffrey S. Evans & Associates.**

Open Salts – Jeffrey S. Evans Auction – May 21, 2014

Price realized include a 15% Buyer's Premium

Provenance reduced to previous owner's initials as below.

Collection of the late Lois S. Hirschmann, Marion, MA = LSH	From an early Mid-Western collection = MID
From an old Pennsylvania collection = OPC	Collection of Pam Christoffel = PC
Property from the Trestle Brook Collection of New Jersey = TBC	From a Virginia private collection = VPC




Lot#: 57
 PRESSED TOILETRY BOXES, LOT OF TWO,
 comprising an opaque green 12-sided pomade with gilt
 decoration, roughed rims, and plain base, and an opaque powder
 blue basket-form pin box. Probably United States. 2 1/2" HOA, 2"
 D, and 1 5/8" HOA, 3" D. Undamaged. Pomade purchased from
 George L. Tilden, 9/14/73. Basket purchased from Richard A.
 Bourne Co., December 17, 1991, lot 138. LSH

Estimate: \$100 - 150
 Price Realized: \$103.50



Lot#: 106
 BULL'S EYE WITH FLEUR DE LYS TABLE ARTICLES,
 LOT OF FOUR,
 colorless lead glass, comprising two goblets, a covered
 sugar bowl, and open salt. Third quarter 19th century. 2
 5/8" to 9" HOA. *Minute rim flakes to salt; goblet stem
 with moderate, shallow chip; sugar cover with flakes and
 chips to the inner flange, post-production polishing to
 most of the seat.* LSH

Estimate: \$50 - 100
 Price Realized: \$126.50



Lot#: 128
 ASSORTED EAPG SALTS, LOT OF FOUR,
 comprising two covered Sawtooth examples, one
 colorless, the other opaque white, and two opaque
 white Sandwich Loop / Gaines open examples, with
 strong opalescence. Boston & Sandwich Glass Co. Third
 quarter 19th century. 2 1/4" to 5 1/2" HOA. *Opaque
 white Sawtooth base undamaged, one Sandwich Loop
 with moderate chips to the rim, remaining articles with
 minor imperfections.* LSH

Estimate: \$50 - 100
 Price Realized: \$103.50



Lot#: 131

ASSORTED NON-FLINT EAPG ARTICLES, LOT OF 13, including a vase-line Wildflower boat-form open salt supported on a turtle's back. Fourth quarter 19th century. Various sizes. *Four with significant damage, two with moderate imperfections, remaining undamaged.* LSH

Estimate: \$50 – 100

Price Realized: \$80.50



Lot#: 410

ASSORTED PRESSED LACY TOYS, LOT OF TWO, fiery opalescent, comprising an oval bowl and a jug with scalloped foot, each with diamond, lily, and scroll design elements. Boston & Sandwich Glass Co. 1835-1850. 7/8" and 1 5/8" H. *Jug with a foot chip, otherwise less than normal flaking/mold roughness.* Literature: Parallels B & K III, figs. 3336a and 3339. Jug purchased from Richard A. Bourne Co., April 30, 1985, lot 256. Bowl purchased from Richard A. Bourne Co., December 17, 1991, lot 251. Ex-collection of Stanley W. Paine. LSH

Estimate: \$100 – 200

Price Realized: \$103.50



Lot#: 417

ASSORTED PRESSED LACY TOYS, LOT OF THREE, colorless, comprising an oblong octagonal dish on foot, and two different circular bowls on low foot, the variation having a large spray of leaves rising from the scrolls flanking the tulips. Boston & Sandwich Glass Co. and possibly others. 1835-1850. 5/8" to 1" H, 1 1/8" x 1 3/4", and 1 5/8" and 1 3/4" D. *Variant with chip and underfill to foot and a chip to rim, remainder with a few small chips.* Literature: B & K III, figs. 3338 and 3346b. LSH

Estimate: \$80 – 120

Price Realized: \$57.50



Lot#: 420

ASSORTED PRESSED LACY TOYS, LOT OF SIX, colorless, comprising a compote/nappy on high foot, two different jugs, a cup and saucer, and an oval dish. Boston & Sandwich Glass Co. 1835-1850. Various sizes. *Excellent condition, compote and one jug with some rim flaking, remainder undamaged.* Literature: Parallels B & K III, figs. 3336a, 3336b, 3337, 3340 and 3345. LSH

Estimate: \$80 - 120

Price Realized: \$103.50



Lot#: 439

PRESSED PANELED TOY TABLE ARTICLES, LOT OF SEVEN, comprising an electric blue cup, saucer, and plate, two colorless covered sugar bowls and an undertray, and a canary yellow plate. Boston & Sandwich Glass Co. 1850-1870. 1/8" to 2" HOA, 1 1/4" to 2 1/4" D. *Cup undamaged, tureen with shallow rim chips and flakes, saucer with moderate rim chip, remaining articles with minor imperfections.* LSH

Estimate: \$80 – 120

Price Realized: \$115.00



Lot#: 441

ASSORTED PRESSED TOY ARTICLES, LOT OF 11, including two chambersticks, and a vaseline (uranium) tumbler. Fourth quarter 19th century. 1/4" to 5 7/8" HOA. *Five articles undamaged, one oil bottle with a mismatched stopper, two articles with minor imperfections, four with significant damage.* LSH

Estimate: \$50 – 100

Price Realized: \$92.00



Lot#: 443

ASSORTED GLASS TOYS, LOT OF 11, including two dolphin candlesticks and an oblong Paneled Ovals bowl on foot. 19th and 20th century. Sticks 2 1/2" H. *Two lacy articles with rim loss, iron with chip, remainder excellent.* LSH

Estimate: \$50 - 80

Price Realized: \$103.50



Lot#: 444

PATTERN-MOLDED FOOTED OPEN SALT, colorless with applied sapphire blue rim, double-ogee bowl with 18-rib broken-swirl, ribs swirled to the left, raised on a short ribbed, compressed-knop stem and applied circular slopping foot with rough pontil mark. Possibly Midwestern. Circa 1780-1820. 3H, 2 3/4" D rim, 2 1/8" D foot. *Undamaged.* Arman Absentee Auctions, January 9, 1985, lot 25. Ex-collection of John Tiffany Gotjen (retains collection label). Acquired from Mr. John A. Williams, Cleveland, Ohio. LSH

Estimate: \$300 - 500

Price Realized: \$690.00



Lot#: 445

BLOW-OVER AND CRACK-OFF FOOTED OPEN SALT, colorless, rectangular form salt with vertical ribs on sides, chevron ribbed ends, and waffle-like pattern under base, raised on a hand-pressed base featuring four circular steps and a square foot with rosette interior, plain ground and polished rim and base edges. Possibly New England Glass Works, or South Boston Flint Glass Works. 1813-1825. 3" H, 2 1/4" x 3 1/4" rim, 2" SQ base. *Near proof with only two very light top-rim flakes, few light outer-rim flakes, and a minute flake to the underside of one foot corner.* Literature: The McKearins - American Glass, pl. 124, fig. 10. Parallels Wilson - American Glass, vol. 1, figs. 206 and 320. Richard A. Bourne Co., February 1, 1983, lot 125. LSH

Estimate: \$100 - 200

Price Realized: \$69.00



Lot#: 446

ASSORTED PATTERN-MOLDED FOOTED OPEN SALTS, LOT OF THREE, colorless, including a crude GIII-25 and a Diamond Quilt with gray tint, each with rough pontil mark. Circa 1820-1840. 1 3/4" to 3 1/8" H. *GIII-25 with a chip to underside of rim, remainder undamaged.* LSH

Estimate: \$100 - 150

Price Realized: \$373.75



Lot#: 447

BLOW-OVER AND CRACK-OFF OPEN SALTS, LOT OF THREE, colorless, comprising two different rectangular examples with vertical ribs on sides and chevron ribbed ends, one with waffle-like pattern under base and plain rim, the other with ribs under base and sawtooth rim, and an ovolo-corner example with vertical notch-cut ribs, plain rim, and molded-star base. Possibly New England Glass Works, or South Boston Flint Glass Works. 1813-1825. 1 1/2" to 1 3/4" H, 2" x 2 7/8" to 2 1/4" x 3 3/8". *Each with some normal chipping/roughness.* Literature: Parallels Wilson - American Glass, vol. 1, figs. 204 and 206. Ovolo-corner and waffle-base examples purchased from Arman Absentee Auctions, October 1, 1986, lots 28, 29. LSH

Estimate: \$80 - 120

Price Realized: \$69.00



Lot#: 448

ASSORTED LACY PRESSED OPEN SALTS, LOT OF FOUR, colorless, comprising OL-11, OL-12, OO-13, and PO-4. Rare, scarce, and plentiful. Boston & Sandwich Glass Co. and others. 1830-1850. Various sizes. *OL-11 with a shallow top-rim chip and some heavy inner-rim chipping, remainder virtually proof with only a few minor flakes.* LSH

Estimate: \$80 - 120

Price Realized: \$184.00



Lot#: 449

ASSORTED LACY PRESSED OPEN SALTS, LOT OF FIVE, colorless, comprising BF-1d, BS-3a, two LE-1, and SL-14. Rare, scarce, and plentiful. Boston & Sandwich Glass Co. and others. 1830-1850. Various sizes. *BF lacking one lower scroll and with small rim chip at one end, BS with a bruise to one upper corner, remainder near proof to proof.* LSH

Estimate: \$80 - 120

Price Realized: \$258.75



Lot#: 450

ASSORTED LACY PRESSED OPEN SALTS, LOT OF SIX, colorless, comprising OL-12, OP-17, PO-4, RD-11, RP-8, and RP-12. Rare and scarce. Boston & Sandwich Glass Co. and others. 1830-1850. Various sizes. *Average to above average condition, PO-4 and RP-12 each with a loss to one scallop, OL-12 with moderate chipping to inner rim and table ring, others with minor imperfection.* LSH

Estimate: \$80 - 120

Price Realized: \$195.50



Lot#: 451

ASSORTED LACY PRESSED OPEN SALTS, LOT OF FOUR, colorless, comprising OL-16, OL-17a, OL-19 variant with complete scroll flanking rim star, and OO-1a with pink tint. Rare, scarce, plentiful, and unlisted in colorless. Boston & Sandwich Glass Co. and others. 1830-1850. Various sizes. *OL-17a with a shallow outer-edge chip at one end and two sizable chips to the foot, remainder near proof with only a few minor flakes.* LSH

Estimate: \$50 - 100

Price Realized: \$218.50



Lot#: 452

ASSORTED LACY PRESSED OPEN SALTS, LOT OF FIVE, colorless, comprising GA-5, OG-10, OO-13, SC-7, and SL-14. Rare, scarce, and plentiful. Boston & Sandwich Glass Co. and others. 1830-1850. Various sizes. *OG-10 with a rim chip at one corner, SC-7 with a sizable chip to the rear of one foot affecting the profile, remainder near proof with only a minor flake/mold roughness.* LSH
 Estimate: 50 - 100
 Price Realized: \$138.00



Lot#: 453

ASSORTED LACY PRESSED OPEN SALTS, LOT OF TEN, cobalt blue and colorless, including a CD-2b, DI-11, OL-32, and PE-1. Extremely rare to plentiful. Boston & Sandwich Glass Co. and others. 1830-1850. Various sizes. *Each with significant damage including glued finial, crack, rim and foot loss, large chips, etc. AS IS.* LSH
 Estimate: \$50 - 100
 Price Realized: \$138.00



Lot#: 454

CD-2 COVERED BEADED SCROLL AND BASKET OF FLOWERS PRESSED SALT, colorless, cover with pine cone finial and interior rim beads arranged 10 x 20 x 10 x 20. Extremely rare. Boston & Sandwich Glass Co. 1835-1845. 3 1/8" HOA, cover 1 7/16" x 2 3/8". *Virtually proof, cover with a flake to one shoulder corner and several minute flakes under the rim, base with only a hint of mold roughness to corners.* Literature: Neal, p. 38. Parallels B & K I, fig. 1449. Arman Absentee Auctions, October 1, 1986, lot 266. LSH

Estimate: \$500 – 800

Price Realized: \$977.50



Lot#: 455

OP-7 OVAL PEDESTAL PRESSED OPEN SALT, unlisted deep cobalt blue, shaped rim, eight-scallop foot with 30 rays underneath. Extremely rare, possibly unique. Possibly Boston & Sandwich Glass Co. 1835-1850. 2 3/8" H, 2" x 3 1/8". *Near proof, rim with only a flake to one end point, fin to one side, foot with a shallow chip underneath and a few minute flakes to lower edge.* Literature: Neal, p. 257. Richard A. Bourne Co., December 13, 1983, lot 192. LSH

Estimate: \$500 - 800

Price Realized: \$805.00

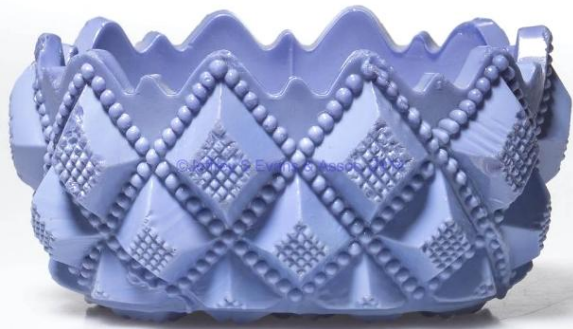


Lot#: 456

LE-2 LYRE PRESSED OPEN SALT, brilliant medium sapphire blue, on four scrolled feet. Very rare. Boston & Sandwich Glass Co. 1835-1845. 1 7/8" H, 2" x 3 1/8". *One rim corner scroll with an inner chip and a moderate chip to the exterior, three chips to two feet.* Literature: Neal, p. 129. LSH

Estimate: \$400 - 600

Price Realized: \$345



Lot#: 457

OL-15 BEADED STRAWBERRY DIAMOND OVAL PRESSED OPEN SALT, opaque light blue with interior mottling, high and low point rim. Very rare. Boston & Sandwich Glass Co. 1830-1850. 1 3/4" H, 2 1/4" x 3 1/2". *Excellent condition, rim with a slightly disfiguring chip to the side of one high point, otherwise only a few minor flakes.* Literature: Neal, p. 219. B & K I, fig. 1443. Purchased from George L. Tilden. Exhibited: Jones Museum of Glass and China, 1986. LSH

Estimate: \$400 - 600

Price Realized: \$747.50



Lot#: 458

RD-27A ROUND PRESSED OPEN SALT, unlisted emerald green, scallop rim. Extremely rare, possibly unique. Possibly Pittsburgh area. 1840-1860. 1 3/8" H, 2 7/8" D. *Excellent condition, minor inner-rim mold roughness, foot with interior bruise and minute flaking/mold roughness.* Literature: Neal, p. 338. Purchased from George L. Tilden. LSH

Estimate: \$400 - 600

Price Realized: \$1092.50



Lot#: 459

PE-1 PROVIDENCE MARKED PRESSED OPEN SALT, colorless, eagle-headed shield on each end, on four scroll feet. Very rare. Providence Flint Glass Co. 1835-1850. 2 1/4" H, 2 3/8" x 3 1/8". *Virtually proof, shallow chip to the lower edge of one foot, normal flaking/mold roughness to interior of feet, rim with a small underfill at one corner.* Literature: Neal, p. 305. Spillman - Corning, p. 191, fig. 743. Arman Absentee Auctions, October 16, 1985, lot 251. LSH

Estimate: \$300 - 500

Price Realized: \$575.00



Lot#: 460

OL-15 BEADED STRAWBERRY DIAMOND OVAL PRESSED OPEN SALT, opaque light violet blue with some interior mottling, high and low point rim. Very rare. Boston & Sandwich Glass Co. 1830-1850. 1 3/4" H, 2 1/4" x 3 1/2". *Excellent condition, rim with a slightly disfiguring chip to the side of one high point, another low point lightly tipped, otherwise only a few minor flakes.* Literature: Neal, p. 219. B & K I, fig. 1443. Purchased from George L. Tilden. LSH

Estimate: \$300 - 500

Price Realized: \$373.75



Lot#: 461

SL-5 SHELL PRESSED OPEN SALT, unlisted deep brilliant cobalt blue, shaped rim. Extremely rare, possibly unique. Possibly Pittsburgh area. 1835-1850. 1 3/8" H, 1 7/8" x 2 5/8". *Rim is proof except for a shallow chip to interior, base with a shallow exterior chip and two flakes, two feet with a light chip, and two shallow chips to underside.* Literature: Neal, p. 409. Richard A. Bourne Co., October 23, 1984, lot 176. Catalogue Note: This is the first example of this salt that we have sold in any color. LSH

Estimate: \$300 - 500

Price Realized: \$920.00



Lot#: 462

WN-1A WAGON PRESSED OPEN SALT, colorless, rope rim, on four wheels. Extremely rare. Possibly Boston & Sandwich Glass Co. 1835-1850. 2" H, 2" x 3". *Rim is proof, shallow chip to an upper corner on one end, small chip to two lower corners, flake to lower edge on one end and flaking/mold roughness to the interior of two wheels.* Literature: Neal, p. 464. Elsholz, lot 1578, this being the actual example. Richard A. Bourne Co., November 17, 1987, lot 1578. Ex-collection of William J. Elsholz (lacking collection label). Kathrine Woodward, 3-26-54. Catalogue Note: The two examples of this variation included in this auction are the first that we have sold. The chipping to the corners is typical on this wagon salt. LSH

Estimate: \$200 - 400

Price Realized: \$632.50



Lot#: 463

BB-1 BIRD BATH AND CORNUCOPIA PRESSED OPEN SALT, opaque white with no opalescence, scallop and point rim. Very rare. New England Glass Co. 1830-1845. 1 7/8" H, 2" x 3". *Proof except for a light flake to outer edge of one corner. Normal annealing lines associated with this color, as made.* Literature: Neal, p. 17. LSH

Estimate: \$200 - 400

Price Realized: \$230.00



Lot#: 464

SL-1A SHELL PRESSED OPEN SALT, medium green, shaped rim. Very rare. Possibly Boston & Sandwich Glass Co. 1835-1850. 1 5/8" H, 2" x 3". *Rim is proof, base with the loss of one foot tip and another with a top chip, no other imperfections.* Literature: Neal, p. 404. Parallels B & K I, fig. 1457. Richard A. Bourne Co., October 23, 1984, lot 179. LSH

Estimate: \$200 - 400

Price Realized: \$632.50



Lot#: 465

RD-14A VARIANT ROUND PRESSED OPEN SALT, unlisted peacock green/teal, pattern variation with longer arrow points and smaller beads in the lower drape, even scallop rim. Probably extremely rare. Possibly Pittsburgh area. 1835-1850. 1 1/2" H, 2 3/4" D rim. *Excellent condition, inner rim with light flaking/mold roughness, shallow chip and minute flakes to table ring.* Literature: Parallels Neal, p. 323. LSH

Estimate: \$200 - 400

Price Realized: \$690.00



Lot#: 466

CN-1B CROWN PRESSED OPEN SALT, fiery opalescent, on four scroll feet. Very rare. Boston & Sandwich Glass Co. 1830-1845. 2 1/8" H, 1 7/8" x 3 1/8". *Proof with just a hint of mold roughness to the interior of two feet, light annealing line to one foot interior, as made.* Literature: Neal, p. 48. Arman Absentee Auctions, October 1, 1986, lot 280. Ex-collection of Karen Hoovler. Ex-collection of Caleb Ewing. LSH

Estimate: \$200 - 300

Price Realized: \$316.25



Lot#: 467

JY-2 JERSEY MARKED PRESSED OPEN SALT, light green, embossed under base, scallop and point rim. Rare. Jersey Glass Co. 1835-1850. 1 7/8" H, 2 1/8" x 3". *Near proof, rim with the loss of one corner scallop, a flake to one outer corner, and minor mold roughness.* Literature: Neal, p. 124. Like Elsholz, lot 1002. LSH

Estimate: \$200 - 300

Price Realized: \$345.00



Lot#: 468

CD-2B COVERED BEADED SCROLL AND BASKET OF FLOWERS PRESSED SALT, colorless, cover with pine cone finial and interior rim beads arranged 10 x 20 x 10 x 20. Extremely rare. Boston & Sandwich Glass Co. 1835-1845. 3 1/8" HOA, cover 1 7/16" x 2 3/8". *Cover with a sliver chip to one exterior corner and a 3/4" wide chip to one end rim, base with two minute flakes to top rim and a shallow chip to inner rim.* Literature: Neal, p. 40. Parallels B & K I, fig. 1449. Arman Absentee Auctions, October 11, 1989, lot 244. LSH

Estimate: \$200 - 300

Price Realized: \$402.50



Lot#: 469

SD-9 STRAWBERRY DIAMOND PRESSED OPEN SALT, deep cobalt blue, scallop and point rim. Scarce. Boston & Sandwich Glass Co. and others. 1827-1840. 2" H, 2" x 2 3/4". *Virtually proof, rim with only a sliver flake to one point, base edge with some mold roughness and annealing lines, as made.* Literature: Neal, p. 452. B & K, fig. 1440. Like Elsholz, lot 1520, which was exhibited at the Detroit Institute of Arts in 1953. Collector's Sales and Services, March 27, 1994, lot 561. Ex-collection of Gladys and Paul Richards (retains collection label). LSH

Estimate: \$200 - 300

Price Realized: \$345.00



Lot#: 470

SL-1 SHELL PRESSED OPEN SALT, cobalt blue, shaped rim. Very rare. Possibly Boston & Sandwich Glass Co. 1835-1850. 1 5/8" H, 2" x 3". *Near proof with only a hint of mold roughness to inner rim, base with a shallow chip to one side and minor flaking/mold roughness underneath, minor interior residue.* Literature: Neal, p. 403. Like Elsholz, lot 1510. Parallels B & K I, fig. 1457. LSH

Estimate: \$200 - 300

Price Realized: \$287.50



Lot#: 471

MV-1 MOUNT VERNON PRESSED OPEN SALT, black olive green, scallop and point rim. Very rare. Very thick and heavy pressing, base is roughly 1/2" thick. Mount Vernon or Saratoga Glass Co. 1835-1850. 1 3/4" H, 2 1/8" x 2 3/4". *Rim profile is near proof, inner rim with two sizable shallow chips and other chipping/mold roughness, outer rim with a sizable shallow chip adjacent to one corner, base and feet undamaged.* Literature: Neal, p. 132. Like Elsholz, lot 902. Richard A. Bourne Co., October 23, 1984, lot 172. LSH

Estimate: \$200 - 300

Price Realized: \$575.00



Lot#: 472

EE-3B EAGLE AND SHIELD PRESSED OPEN SALT, light opalescent, on four feet. Rare. Boston & Sandwich Glass Co. 1830-1845. 2 1/8" H, 2" x 3 1/4". *Proof except for a minor flake to one foot.* Literature: Neal, p. 79. B & K I, fig. 1453. Like Elsholz, lot 320, which was exhibited at the Detroit Institute of Arts in 1953. Richard A. Bourne Co., December 18, 1985, lot 24. LSH

Estimate: \$200 - 300

Price Realized: \$517.50



Lot#: 473

OP-17 OVAL PEDESTAL PRESSED OPEN SALT, opalescent, complex scrolled rim, on four feet. Rare. Possibly Boston & Sandwich Glass Co. 1830-1840. 1 7/8" H, 2 5/8" x 3 1/2". *Near proof, rim with a shallow outer-edge chip and a few flakes, otherwise undamaged including all feet intact.* Literature: Neal, p. 267. LSH

Estimate: \$200 - 300

Price Realized: \$258.75



Lot#: 474

PE-1A UNMARKED PROVIDENCE PRESSED OPEN SALT, colorless, eagle-headed shield on each end, on four scroll feet. Very rare. Providence Flint Glass Co. 1835-1850. 2 1/4" H, 2 1/2" x 3 1/8". *Proof except for a minute flake to the lower edge of one foot and a hint of mold roughness to interior of feet.* Literature: Neal, p. 306. Spillman - Corning, p. 191, fig. 744. Arman Absentee Auctions, October 1, 1986, lot 273. Ex-collection of Karen Hoovler. Ex-collection of Caleb Ewing. LSH

Estimate: \$200 - 300

Price Realized: \$184.00



Lot#: 475

CN-1A CROWN PRESSED OPEN SALT, deep cobalt blue, on four scroll feet. Rare. Boston & Sandwich Glass Co. 1830-1845. 2 1/8" H, 1 7/8" x 3 1/8". *Excellent condition, two rim corners lightly polished, flake under one foot, and normal flaking/mold roughness to the interior of the feet, a few scattered minute flakes.* Literature: Neal, p. 47. Parallels B & K I, fig. 1455. Arman Absentee Auctions, October 11, 1989, lot 227. LSH

Estimate: \$200 - 300

Price Realized: \$287.50



Lot#: 476

SD-9 STRAWBERRY DIAMOND PRESSED OPEN SALT, deep cobalt blue, scallop and point rim. Scarce. Boston & Sandwich Glass Co. and others. 1827-1840. 2" H, 2" x 2 3/4". *Excellent condition, rim with a chip to one corner and a shallow inner-edge chip, otherwise just a hint of mold roughness.* Literature: Neal, p. 452. B & K, fig. 1440. Like Elsholz, lot 1520, which was exhibited at the Detroit Institute of Arts in 1953. Arman Absentee Auctions, December 3, 1986, lot 186. LSH

Estimate: \$150 - 250

Price Realized: \$218.50



Lot#: 477

OL-15 BEADED STRAWBERRY DIAMOND OVAL PRESSED OPEN SALT, strong fiery opalescent, high and low point rim. Rare. Boston & Sandwich Glass Co. 1830-1850. 1 3/4" H, 2 1/4" x 3 1/2". *Excellent condition, several low points lightly tipped, otherwise only some light flaking.* Literature: Neal, p. 219. Parallels B & K I, fig. 1443. Richard A. Bourne Co., April 9, 1986, lot 218. LSH

Estimate: \$100 - 200

Price Realized: \$316.25



Lot#: 478

SL-1 SHELL PRESSED OPEN SALT, medium blue, shaped rim. Very rare. Possibly Boston & Sandwich Glass Co. 1835-1850. 1 5/8" H, 2" x 3". *Rim with a flake to one side point and a shallow interior chip and mold roughness, base with a shallow chip to two feet and a shallow chip to outer edge, small annealing separation in foot rim, as made.* Literature: Neal, p. 403. Parallels B & K I, fig. 1457. Exhibited: Jones Museum of Glass and Ceramics, 1984. LSH

Estimate: \$100 - 200

Price Realized: \$230.00



Lot#: 479

EE-8 EAGLE AND SHIP PRESSED OPEN SALT, colorless, intricate foliate chain top rim. Rare. Boston & Sandwich Glass Co. 1830-1845. 1 7/8" H, 2 7/8" D. *Rim is proof, foot with two shallow top-edge chips and some light flaking/mold roughness.* Literature: Neal, p. 86. Spillman, fig. 677. Like Elsholz, lot 305, which was exhibited at the Detroit Institute of Arts in 1953. Parallels B & K I, fig. 1454. Richard A. Bourne Co., December 4, 1984, lot 276. LSH

Estimate: \$100 - 200

Price Realized: \$287.50



Lot#: 480

OO-12A (VARIANT) OCTAGON OBLONG PRESSED OPEN SALT, cobalt blue, serrated rim, unlisted base variation with all-over inverted diamonds running lengthwise. Probably extremely rare. Possibly Boston & Sandwich Glass Co. 1835-1850. 1 1/4" H, 2 1/8" x 3 1/8". *Excellent condition, inner-rim with a small chip and normal mold roughness, foot with two top-edge chips and some polishing.* Literature: Parallels Neal, p. 179. LSH

Estimate: \$100 - 200

Price Realized: \$230.00



Lot#: 481

EE-6 OCTAGONAL EAGLE PRESSED OPEN SALT, colorless, upright even-scallop rim, stippled center. Scarce. Probably Boston & Sandwich Glass Co. 1830-1845. 1 1/2" H, 2 7/8" x 3 7/8". *Virtually proof with only a minute flake to one rim scallop and a light sliver flake to the outer rim.* Literature: Neal, p. 82. Like Elsholz, lot 301, which was exhibited at the Detroit Institute of Arts in 1953. Arman Absentee Auctions, November 20, 1985, lot 42. Ex-collection of Larry Gray Fair and Elry M. Groves (retains collection label). Ex-collection Mrs. Mary Neefe, New Cumberland, PA. LSH

Estimate: \$100 - 200

Price Realized: \$460.00



Lot#: 482

SD-7 STRAWBERRY DIAMOND PRESSED OPEN SALT, deep cobalt blue, scallop and point rim. Scarce. Boston & Sandwich Glass Co. 1827-1840. 1 7/8" H, 2 1/8" x 2 7/8". *Near proof, rim is proof, shallow chip and flake to two base corners, 1/4" annealing check off rim, as made.* Literature: Neal, p. 449. Spillman - Corning, p. 195, fig. 768. Parallels B & K I, fig. 1439. Richard A. Bourne Co., April 30, 1985, lot 64. Ex-collection of the Corning Museum of Glass. LSH

Estimate: \$100 - 200

Price Realized: \$149.50



Lot#: 483

EE-7 EAGLE PRESSED OPEN SALT, colorless, Empire sofa form on four scrolled feet, very faint stippling and diamonds under base. Rare. Probably Boston & Sandwich Glass Co. 1830-1845. 2 1/8" H, 2 5/8" x 3 3/4". *Virtually proof with only some normal mold roughness to interior of feet and just a hint of mold roughness to upper corners.* Literature: Neal, p. 83. Spillman - Corning, fig. 676. Like Elsholz, lots 302-304. Richard A. Bourne Co., December 4, 1984, lot 279. LSH

Estimate: \$100 - 150

Price Realized: \$316.25



Lot#: 484

SL-14 SHELL AND HAIRPIN PRESSED OPEN SALT, light opalescent, on four scroll feet. Rare. Possibly Boston & Sandwich Glass Co. 1830-1845. 1 5/8" H, 2" x 3 1/8". *Excellent condition, rim with one tipped shell scallop and an area of roughness at one end, otherwise only some minor mold roughness to corners and feet.* Literature: Neal, p. 418. Purchased from George L. Tilden. LSH

Estimate: \$100 - 150

Price Realized: \$138.00



Lot#: 485

CN-1A CROWN PRESSED OPEN SALT, strong fiery opalescent, on four scroll feet. Rare. Boston & Sandwich Glass Co. 1830-1845. 2 1/8" H, 1 7/8" x 3 1/8". *Virtually proof having only a minor flake to one vertical corner below the scroll, and a single flake to interior of one foot.* Literature: Neal, p. 47. Spillman - Corning, p. 177, fig. 666. Parallels B & K I, fig. 1455. Richard A. Bourne Co., February 1, 1983, lot 645. LSH

Estimate: \$100 - 150

Price Realized: \$258.75



Lot#: 486

CT-1 CHARIOT PRESSED OPEN SALT, opaque white, scallop and point rim. Very rare. Boston & Sandwich Glass Co. 1835-1850. 1 3/4" H, 2 1/8" x 2 7/8". *Excellent condition, rim with a shallow chip to outer edge of one corner and two light top-edge flakes, otherwise only some light mold roughness.* Literature: Neal, p. 35. Like Elsholz, lot 315. Parallels B & K I, fig. 1461. Arman Absentee Auctions, October 11, 1989, lot 229. LSH

Estimate: \$100 - 150

Price Realized: \$195.50



Lot#: 487

EE-5 OCTAGONAL EAGLE PRESSED OPEN SALT, colorless, flared even-scallop rim, center without stippling. Rare. Possibly Providence Flint Glass Co. 1830-1845. 1 1/4" H, 3" x 4". *Excellent condition, loss of one rim scallop and another lightly tipped, no other flaking or mold roughness.* Literature: Neal, p. 81. Like Elsholz, lot 300. Richard A. Bourne Co., December 4, 1984, lot 277. LSH

Estimate: \$100 - 150

Price Realized: \$161.00



Lot#: 488

RP-9 ROUND PEDESTAL GOTHIC ARCH, MAGNET, AND SHEAF, colorless, each large rim scallop divided into five small scallops, scallop and point foot. Rare. Rays under base are thinner than illustrated by Neal. Possibly Boston & Sandwich Glass Co. 1835-1850. 2" H, 2 3/4" D. *Near proof, one large scallop lightly tipped and another with a slight underfill, small shallow chip to top of foot.* Literature: Neal, p. 357. Like Elsholz, lot 1355. Richard A. Bourne Co., December 18, 1985, lot 38. Catalogue Note: This is the first example of this salt that we have sold which would suggest it is much rarer than classified by Neal. LSH

Estimate: \$100 - 150

Price Realized: \$207.00



Lot#: 489

GA-5 GOTHIC ARCH AND HEART PRESSED OPEN SALT, pale amethyst, even scallop rim, raised on four paw feet. Rare. Probably Boston & Sandwich Glass Co. 1835-1845. 1 5/8" H, 2" x 2 7/8". *Rim with an adjacent top-rim and under-rim chip at one corner causing the loss of one scallop, otherwise only two top-rim flakes and another under the base.* Literature: Neal, p. 94. LSH

Estimate: \$100 - 150

Price Realized: \$80.50



Lot#: 490

PP-2 DOUBLE VARIANT PEACOCK EYE PEDESTAL PRESSED OPEN SALT, colorless, serrated scallop and point rim. Base variation with concave rayed-to-dot center surrounded by two serrated rings, all within three rope rings. Rim variation with the cap ring rotated so that the peacock eyes and large scallops are not aligned. Unknown rarity, probably very or extremely rare. Boston & Sandwich Glass Co. 1830-1845. 2" H, 3 1/8" D. *Very good condition, rim with two lightly tipped scallops and two tipped points, one top-rim spill, and light mold roughness.* Literature: Parallels Neal, p. 292 and B & K I, fig. 1468. LSH

Estimate: \$100 - 150

Price Realized: \$69.00



Lot#: 491

SN-1C STAG'S HORN PRESSED OPEN SALT, unlisted steel blue, 20 rays under base. Probably extremely rare. Possibly Boston & Sandwich Glass Co. 1835-1850. 1 3/4" H, 2" x 3 1/8". *Excellent condition, rim with two minor flakes and light mold roughness, base edge with a small shallow chip, flake, and an open bubble.* Literature: Parallels Neal, p. 430. Richard A. Bourne Co., October 23, 1984, lot 178. LSH

Estimate: \$100 - 150

Price Realized: \$207.00



Lot#: 492

SC-1(A) VARIANT PEACOCK EYE MEDALLION AND ACANTHUS LEAF, colorless, on four feet with nipple-like tips. Base variation having the 22 rays coming to a raised star-like point in the center. Unlisted, probably extremely rare. Providence Flint Glass Co. 1835-1850. 1 7/8" h, 2" x 3 1/4". *Proof except for a minute inner-rim flake at one corner.* Literature: Parallels Neal, p. 386. Elsholz, lot 1358, this being the actual example, variation not noted in catalogue. Richard A. Bourne Co., November 17, 1987, lot 1358. Ex-collection of William J. Elsholz (retains collection label). George & Michael Abraham, 7-16-53. LSH

Estimate: \$100 - 150

Price Realized: \$258.75



Lot#: 493

RD-37 / MCKEARIN GV-24 VARIANT SIGNED OPEN SALT OR PERFUMERY CONTAINER, opaque white, flared rim, concave base embossed "R & G. A. WRIGHT / PHILADELPHIA", rough pontil mark. Probably extremely rare. Possibly Boston & Sandwich Glass Co. 1850-1870. 2" to 2 1/8" H, 3 1/2" D rim, 1 3/4" D base. *Chip to outer edge of foot and small chip under foot.* Literature: The Acorn, Volume 15, 2008/2009, p. 61, "Pressed Glass Salt Dishes of the Lacy Period 1825-1850: An Addendum." Exhibited: Jones Museum of Glass and Ceramics, 1984. Catalogue Note: The J. H. Colton & Co. issued a Philadelphia commercial edition of its Atlas of America in 1856 that contained a lithograph titled "R. & G.A. Wright. Manufacturers of the Celebrated Gold Medal Perfumery and Importers of French, English & German Druggists & Fancy Articles." An 1866 Philadelphia newspaper advertisement records the Wrights operating a store at 624 Chestnut as "manufacturers of perfumery, importers of fancy goods, druggists sundries etc." The firm's name appears on other related glass containers including bear-form jars produced by the Boston & Sandwich Glass Co. The exact usage of this salt-like container is undetermined at this time. LSH

Estimate: \$100 - 150

Price Realized: \$184.00



Lot#: 494

SD-4C WAVED, STRAWBERRY DIAMOND PRESSED OPEN SALT, opaque chalk white, even scallop rim with narrow space between each scallop. Extremely rare. Boston & Sandwich Glass Co. 1828-1840. 2" H, 2 1/8" x 3 1/8". *Rim with only the loss of one corner scallop and light mold roughness, two feet with a broken bubble and associated roughness to tips, hairline crack off the rim at one corner and some normal annealing lines associated with this color.* Literature: Neal, p. 443. Like Elsholz, lot 1568. Parallels B & K I, fig, 1442. Richard A. Bourne Co., December 18, 1985, lot 23. LSH
Estimate: \$100 - 150
Price Realized: \$149.50



Lot#: 495

PR-1E PEACOCK EYE ROUND PRESSED OPEN SALT, colorless, serrated scallop and point rim, new variation with four plain rings in base. Very rare. Boston & Sandwich Glass Co. 1830-1845. 1 1/2" H, 3 1/8" D. *Excellent condition with two small chips to rim scallops, one point tipped, and a few light flakes.* Literature: Parallels Neal, p. 286. The Acorn, Volume 15, 2008/2009, p. 57, "Pressed Glass Salt Dishes of the Lacy Period 1825-1850: An Addendum," The Acorn, Volume 15, 2008/2009, p. 57. Parallels B & K I, fig. 1467. LSH
Estimate: \$100 - 150
Price Realized: \$103.50



Lot#: 496

ASSORTED PP PEACOCK EYE PEDESTAL LOT OF TWO, colorless, comprising a PP-2a with concentric rings under base and a PP-3 with 27 rays and three rings of beads under base. Rare and scarce. Possibly Boston & Sandwich Glass Co. 1830-1845. 2" H, 3" and 3 1/8" D rims. *Excellent condition, each with a few flakes to rim scallops, one with a lightly tipped point, feet undamaged.* Literature: Neal, pp. 294 and 296. Elsholz, lot 1348, this being the actual example. PP-2a from Richard A. Bourne Co., November 17, 1987, lot 1448. Ex-collection of William J. Elsholz (retains collection label). George & Michael Abraham, 11-10-48. LSH
Estimate: \$100 - 150
Price Realized: \$149.50



Lot#: 497

ASSORTED CN CROWN, LOT OF TWO, colorless, comprising a CN-1a and a CN-1b-a new variant with nine rays between crossbars in base, each on four scroll feet. Scarce and unknown rarity, variant unlisted in colorless. Boston & Sandwich Glass Co. 1830-1845. 2 1/8" H, 1 7/8" x 3 1/8". *Excellent condition, CN-1a with only a flake to two upper corners, variant with a chip to one upper corner, otherwise undamaged.* Literature: Neal, p. 47. The Acorn, Volume 15, 2008/2009, p. 57, "Pressed Glass Salt Dishes of the Lacy Period 1825-1850: An Addendum." The Acorn, Volume 15, 2008/2009, p. 27. Variant purchased from Richard A. Bourne Co., April 24, 1984, lot 291. LSH
Estimate: \$100 - 150
Price Realized: \$115.00



Lot#: 498

CT-1 AND CT-1A CHARIOT, LOT OF TWO, strongly mottled silvery opaque blue and colorless, scallop and point rims. Very rare and scarce. Boston & Sandwich Glass Co. 1835-1850. 1 3/4" and 1 5/8" H, 2 1/8" x 2 7/8". *Blue example fair with a significant shallow loss at one end below the rim, two chips and several flakes to rim, base scallops and feet intact, colorless example with a shallow inner-edge chip and moderate mold roughness, otherwise excellent.* Literature: Neal, pp. 35, 36. Like Elsholz, lot 148. B & K I, fig. 1461. Colorless example purchased from Richard A. Bourne Co., Dec. 13, 1983, lot 241. Blue example purchased from Richard A. Bourne Co., Dec. 4, 1984, lot 236. LSH

Estimate: \$100 - 150
Price Realized: \$149.50



Lot#: 499

BH-1A VARIANT BEE HIVE, LOT OF TWO, colorless, each with scallop and point rim, narrow cap ring variants, one lacking rim caps at top of corner columns. Very rare. New England Glass Co. 1830-1850. 1 7/8" H, 2 1/8" x 3". Virtually proof with only a few light flakes and minor mold roughness. Literature: Parallels Neal, p. 16. *The Acorn*, Volume 15, 2008/2009, p. 57, "Pressed Glass Salt Dishes of the Lacy Period 1825-1850: An Addendum." *The Acorn*, Volume 15, 2008/2009, p. 24. One purchased from Arman Absentee Auctions, August 2, 1991, lot 31. LSH

Estimate: \$100 - 150
Price Realized: \$126.50



Lot#: 500

ASSORTED SN-1B STAG'S HORN, LOT OF THREE, cobalt blue, translucent clambroth, and unlisted swirling opal with opalescence at rim and foot, each with 32 rays under base. Rare and possibly extremely rare. Possibly Boston & Sandwich Glass Co. and others. 1835-1850. 1 3/4" H, 2" x 3 1/8". *Clambroth example proof except for a very light base flake, others each with a shallow rim chip and light mold roughness, opal base with a minor flake at one corner.* Literature: Neal, p. 429. Clambroth example purchased from Richard A. Bourne Co., October 23, 1984, lot 55. Blue example purchased Arman Absentee Auctions, December 3, 1986, lot 188. LSH

Estimate: \$100 - 150
Price Realized: \$230.00



Lot#: 501

OG-10 SCROLLING ACANTHUS LEAF OBLONG PRESSED OPEN SALT, colorless, shaped rim, on four short feet. Rare. Providence Flint Glass Co. 1835-1850. 1 5/8" H, 2 1/4" x 3". *Near proof with only a few scattered light flakes and normal mold roughness.* Literature: Neal, p. 156. Like Elsholz, lot 650. Arman Absentee Auctions, December 3, 1986, lot 174. LSH

Estimate: \$80 - 120

Price Realized: \$195.50



Lot#: 502

NE-6 NEW ENGLAND UNMARKED PRESSED OPEN SALT, light green, 12-point star under base, scallop and point rim. Rare. Jersey Glass Co. or New England Glass Co. 1830-1850. 2" H, 2 1/8" x 3". *Proof except for a few minute flakes and minor mold roughness.* Literature: Neal, p. 143. Spillman - Corning, p. 185, fig. 700. Richard A. Bourne Co., December 18, 1985, lot 12. LSH

Estimate: \$80 - 120

Price Realized: \$138.00



Lot#: 503

OP-1A CORNUCOPIA AND SHIELD PRESSED OPEN SALT, colorless, raised on four claw feet. Rare. Boston & Sandwich Glass Co. 1835-1845. 2" H, 2 3/8" x 3 3/8". *Proof except for a light inner-rim flake.* Literature: Neal, p. 247. B & K I, fig. 1445. Richard A. Bourne Co., December 13, 1983, lot 236. LSH

Estimate: \$80 - 120

Price Realized: \$161.00



Lot#: 504

OO-4 PRINCESS FEATHER MEDALLION OBLONG OCTAGON, colorless, even scallop rim with no rope underneath. Rare. Probably Boston & Sandwich Glass Co. 1835-1850. 1 1/2" h, 2 5/8" x 3 3/4". *Proof.* Literature: Neal, p. 169. Arman Absentee Auctions, December 3, 1986, lot 165. Ex-collection of Karen Hoovler. Ex-collection of Caleb Ewing. LSH

Estimate: \$80 - 120

Price Realized: \$57.50



Lot#: 505

RP-7 ROUND PEDESTAL GOTHIC ARCH PRESSED OPEN SALT, colorless, deep-scallop rim, scallop and point foot. Very rare. Possibly Boston & Sandwich Glass Co. 1835-1850. 2 3/8" H, 3 1/8" D. *Proof except for a minute flake to one rim scallop.* Literature: Neal, p. 355. Like Elsholz, lot 1354. Arman Absentee Auctions, October 11, 1989, lot 247. LSH

Estimate: \$80 - 120

Price Realized: \$316.25



Lot#: 506

EE-3B EAGLE AND SHIELD PRESSED OPEN SALT, colorless, on four feet. Scarce. Boston & Sandwich Glass Co. 1830-1845. 2 1/8" H, 2" x 3 1/4". *Proof as made, with a minor V-shape annealing separation to the interior of one foot.* Literature: Neal, p. 79. Parallels B & K I, fig. 1453. LSH

Estimate: \$80 - 120

Price Realized: \$184.00



Lot#: 507

EE-3B EAGLE AND SHIELD PRESSED OPEN SALT, colorless, on four feet. Scarce. Boston & Sandwich Glass Co. 1830-1845. 2 1/8" H, 2" x 3 1/4". *Virtually proof with only a minute top-rim flake and one inner-foot flake.* Literature: Neal, p. 79. Parallels B & K I, fig. 1453. LSH

Estimate: \$80 - 120

Price Realized: \$172.50



Lot#: 508

SD-12 STRAWBERRY DIAMOND PRESSED OPEN SALTS, LOT OF TWO, deep cobalt blue and colorless, scallop and point rim. Scarce and plentiful. Boston & Sandwich Glass Co. 1827-1840. 2 1/8" H, 2 1/8" x 2 7/8". *Blue example with a sizable inner-rim chip and moderate rim chipping, shallow chip to one vertical corner, high-point wear, colorless example near proof with only a few rim flakes and a flake to one base corner.* Literature: Neal, p. 455. B & K I, fig. 1441. LSH

Estimate: \$80 - 120

Price Realized: \$172.50



Lot#: 509

SD-2 STRAWBERRY DIAMOND SOFA PAIR, colorless, fan rim with serrated points, raised on four hairy paw feet. Scarce. Possibly Boston & Sandwich Glass Co. 1827-1840. 2" H, 2 1/4" x 3 3/8". *Virtually proof, each with a minor flake to one upper corner scroll, one foot with a shallow chip to toes.* Literature: Neal, p. 437. Like Elsholz, lot 1566. Richard A. Bourne Co., April 24, 1984, lot 295. LSH
 Estimate: \$80 - 120
 Price Realized: \$184.00



Lot#: 510

SD-2 AND SD-4A STRAWBERRY DIAMOND, LOT OF 2, colorless, sofa form with fan rim, raised on four hairy paw feet, and wavy form with even-scallop rim. Scarce and unlisted colorless. Possibly Boston & Sandwich Glass Co. 1827-1840. 2" H, 2 1/4" x 3 3/8", and 2" H, 2 1/4" x 3 1/8". *Above average, sofa with a shallow outer-edge chip, and a flake and mold roughness to upper scrolls, other with the loss of one rim scallop and some flaking to others, shallow chip to one base corner.* Literature: Neal, pp. 437 and 441. Like Elsholz, lot 1566. Richard A. Bourne Co., April 24, 1984, lots 294 and 298. LSH
 Estimate: \$80 - 120
 Price Realized: \$115.00



Lot#: 511

ASSORTED RP ROUND PEDESTAL, LOT OF TWO, colorless, comprising an RP-18a and an RP-25. Unknown rarity and rare. Possibly Boston & Sandwich Glass Co. 1840-1860. 1 3/4" H, 3" DOA, and 2 1/8" H, 2 7/8" D. *Proof except for a very minor flake to each foot.* Literature: Neal, pp. 368 and 375. RP-18a purchased from Arman Absentee Auctions, December 3, 1986, lot 169. Ex-collections of Karen Hoovler and Caleb Ewing. RP-25 purchased from Collector's Sale and Service, November 7, 1993, lot 620. Ex-collection of Gladys and Paul Richards (retains collection label). LSH
 Estimate: \$80 - 120
 Price Realized: \$138.00



Lot#: 512

SD-3 AND SD-4A STRAWBERRY DIAMOND, LOT OF 2, colorless, sofa form with fan rim, raised on four hairy paw feet, and wavy form with even-scallop rim. Scarce and unlisted colorless. Possibly Pittsburgh and Boston & Sandwich Glass Co. 1827-1840. 2" H, 2 1/4" x 3 3/8", and 2" H, 2 1/4" x 3 1/8". *Above average, sofa with a shallow inner-rim chip and minute rim flakes, other with an inner-rim chip and several rim flakes, and a shallow chip to base edge.* Literature: Neal, pp. 439 and 441. SD-4 purchased from Richard A. Bourne Co., December 4, 1984, lot 281. LSH
 Estimate: \$80 - 120
 Price Realized: \$103.50



©Jeffrey S Evans & Assoc. 2014



Lot#: 513

ASSORTED SN STAG'S HORN, LOT OF THREE, comprising a medium amber SN-1, a cobalt blue SN-1, and a deep cobalt blue SN-1b. Rare and scarce. Possibly Boston & Sandwich Glass Co. and others. 1835-1850. 1 3/4" H, 2" x 3 1/8". *Amber and deep cobalt examples with moderate chipping and mold roughness to rims, other cobalt example with some polishing to rim, bases excellent with only a light flake to each.* Literature: Neal, pp. 427 and 429. Blue SN-1 purchased from Richard A. Bourne Co., October 23, 1984, lot 177. Amber example purchased from Richard A. Bourne Co., April 30, 1985, lot 239. Ex-collection of the Corning Museum of Glass. LSH
Estimate: \$80 - 120
Price Realized: \$161.00



©Jeffrey S Evans & Assoc. 2014



Lot#: 514

ASSORTED NE NEW ENGLAND MARKED, LOT OF FIVE, colorless, comprising NE-1, NE-2, NE-3, NE-3a variant with narrow cap ring, and NE-4. Plentiful, very rare, and unknown rarity. New England Glass Co. 1830-1850. Various sizes. *Three above average to near proof with less than normal chipping and mold roughness, others average with rim chips/flakes.* Literature: Neal, pp. 137, 139, 140, and 141. LSH
Estimate: \$80 - 120
Price Realized: \$258.75



©Jeffrey S Evans & Assoc. 2014

Lot#: 515

RP-3 ROUND FLORAL PRESSED OPEN SALT, mottled silvery opaque powder to medium blue, intricate foliate chain-top rim with inner rope rings, 12-scallop foot. Extremely rare. Boston & Sandwich Glass Co. 1835-1850. 2" H, 3 1/8" D rim, 2" D foot. *Rim is proof, foot with only a shallow chip to one scallop; however, it appears to have been broken horizontally around bottom of bowl and glued.* Literature: Neal, p. 350. Like Elsholz, lot 1506. B & K I, fig. 1460a. Spillman - Corning, fig. 755 and color pl. 9. LSH
Estimate: \$50 - 100
Price Realized: \$126.50



Lot#: 516

GA-4A GOTHIC ARCH AND HEART PRESSED OPEN SALT, opalescent to opaque medium blue, even scallop rim. Scarce. Probably Boston & Sandwich Glass Co. 1835-1845. 1 3/4" H, 2" x 2 3/4". *Fair condition with moderate chipping to rim and vertical corners, base with light chipping/mold roughness and an open bubble at one corner.* Literature: Neal, p. 93. Richard A. Bourne Co., December 4, 1984, lot 231. LSH
Estimate: \$50 - 100
Price Realized: \$103.50



Lot#: 517

BT-2 "PITTSBURGH" STEAMBOATS, LOT OF 2, black amethyst and unlisted frosted (sanded) deep cobalt blue, each embossed on stern. Extremely rare and possibly unique. Stourbridge Flint Glass Works. 1830-1845. 1 1/2" H, 1 7/8" x 3 5/8". *Poor condition with losses, short cracks, and chipping. AS IS.* Literature: Neal, p. 21. Richard A. Bourne Co., December 13, 1983, lots 187, 188. LSH

Estimate: \$50 - 100
Price Realized: \$345.00



Lot#: 518

ASSORTED MV MOUNT VERNON PRESSED OPEN SALTS, LOT OF THREE, comprising a colorless MV-1, a cobalt blue MV-1b, and a colorless MV-2. Very rare and plentiful. Boston & Sandwich Glass Co., possibly Mount Vernon or Saratoga Glass Co. 1835-1850. 1 5/8" and 1 3/4" H, 2 1/8" x 2 3/4". *Blue example with a 1/2" crack off the rim, a light check at one end above the base, and moderate flaking/mold roughness to rim, colorless examples proof except for a flake to the outer corner of one rim.* Literature: Neal, pp. 132, 134, and 135. Cobalt example purchased from Richard A. Bourne Co., December 18, 1985, lot 8. LSH

Estimate: \$50 - 100
Price Realized: \$92.00



Lot#: 519

ASSORTED SL SHELL PRESSED OPEN SALTS, LOT OF THREE, comprising a colorless SL-1a, a medium amber SL-8, and a colorless SL-8. Very rare, rare, and scarce. Possibly Boston & Sandwich Glass Co. and others. 1835-1850. 1 5/8" H, 2" x 3" and 1 7/8" x 2 3/4". *Amber example with a shallow chip, flake, and 1/2" underfill to base edge, colorless examples excellent, each with a chip to base and minor mold roughness.* Literature: Neal, pp. 404 and 412. The Acorn, Volume 15, 2008/2009, p. 70, "Pressed Glass Salt Dishes of the Lacy Period 1825-1850: An Addendum." Colorless SL-8 purchased from Richard A. Bourne Co., April 30, 1985, lot 252. Amber example purchased from Richard A. Bourne Co., December 18, 1985, lot 9. LSH

Estimate: \$50 - 100
Price Realized: \$103.50



Lot#: 520

ASSORTED SD STRAWBERRY DIAMOND PRESSED OPEN SALTS, LOT OF FOUR, colorless SD-7, SD-7c (new variation), and SD-9, and a swirling pink/violet SD-9. Plentiful, unknown rarity, and rare or very rare. Boston & Sandwich Glass Co. and others. 1827-1840. Various sizes. *SD-7 and SD-7c near proof, pink example with the partial loss of one foot and mold roughness, last example with chips and moderate mold roughness.* Literature: Neal, pp. 449 and 452. The Acorn, Volume 15, 2008/2009, p. 75, "Pressed Glass Salt Dishes of the Lacy Period 1825-1850: An Addendum." LSH

Estimate: \$50 - 100
Price Realized: \$161.00



Lot#: 521

INVERTED WAFFLE PRESSED OPEN SALTS, LOT OF FOUR, deep amethyst, two shades of amber, and opalescent, each oblong octagonal form with a stepped shoulder and tiny even-scallop rim. Boston & Sandwich Glass Co. 1840-1860. 1" H, 2 1/2" x 3 1/4". *Excellent condition, amethyst and lighter amber examples each with a shallow outer-rim chip not affecting the rim profile, otherwise only a few minute flakes.* Literature: B & K I, fig. 1472. LSH

Estimate: \$100 - 200
Price Realized: \$184.00



Lot#: 522

ASSORTED BASKET OF FLOWERS PRESSED OPEN SALTS, LOT OF TWO, opalescent, comprising a BF-1f and a BS-2. Rare and scarce. Boston & Sandwich Glass Co. 1830-1845. 2" and 1 3/4" H. *Excellent condition, BF with a chip/mold roughness to outer edge of one upper corner, otherwise only some scattered minor flaking/mold roughness, feet and scrolls intact, BS with only a small chip and flake to inner rim.* Literature: Neal, pp. 7 and 9. BS-2 purchased from Richard A. Bourne Co., December 18, 1985, lot 15. LSH

Estimate: \$100 - 150
Price Realized: \$287.50



Lot#: 523

DIAMOND-TOP CAPSTAN-FORM PRESSED OPEN SALT, deep fiery opalescent, band of 12 diamonds surround the rim, raised on a six-lobed foot with wide grooves underneath. Probably New England or Midwestern. 1840-1870. 2 1/4" H, 3 1/8" DOA. *Excellent condition for this type of salt, one inner-rim flake, shallow chipping/mold roughness to rim underside, hint of mold roughness to foot.* Literature: Lee - Sandwich, pl. 69, fig. 5. Spillman - Corning, p. 240, fig. 933. Arman Absentee Auctions, October 1, 1986, lot 189. LSH

Estimate: \$80 - 120
Price Realized: \$138.00



Lot#: 524

ASSORTED EARLY PRESSED OPEN SALTS, LOT OF TWO, comprising an opaque white NE-1 and a colorless EE-1a, each with scallop and point rim. Rare and scarce. New England Glass Co. and Boston & Sandwich Glass Co. 1830-1850. 1 7/8" H. *Excellent condition with only some minor flaking/mold roughness.* Literature: Parallels Neal, pp. 74 and 137. LSH

Estimate: \$80 - 120
Price Realized: \$161.00



Lot#: 525

HEAVY RECTANGULAR PRESSED OPEN SALTS, LOT OF TWO, comprising a deep cobalt blue sofa-form example with scrolled rim and rolled ends, and a deep fiery opalescent to opaque example two horizontal ribs and even-scallop rim. United States. 1830-1850. 1 3/4" and 1 7/8" H, 2" x 3". *Very good condition for this type of salt, blue example with several shallow chips and moderate flaking/mold roughness, opal example with a shallow chip to top rim and outer rim, otherwise only some light flaking/mold roughness.* Literature: Parallels Spillman - Corning, p. 241, fig. 939 and p. 242, fig. 944. Provenance: Collection of the late Lois S. Hirschmann, Marion, MA. Opalescent example purchased from Richard A. Bourne Co., October 23, 1984, lot 56. Blue example purchased from Arman Absentee Auctions, October 1, 1986, lot 170. LSH

Estimate: \$80 - 120
Price Realized: \$258.75



©Jeffrey S Evans & Assoc. 2014



Lot#: 526

EARLY RECTANGULAR PRESSED OPEN SALTS, LOT OF THREE, deep cobalt blue, moonstone, and colorless, each featuring concave sides with protruding knobs, colored examples with full waffle-pattern base, colorless example with smaller waffles within a long oval. Probably United States. 1840-1870. 1 1/4" H, 2 5/8" x 3 3/8" and 2 5/8" x 3 1/2". *Excellent condition for this type of salt, colored examples with scattered light flakes, blue example with an additional base chip, colorless example with three under-rim chips.* Literature: Parallels Spillman - Corning, p. 242, fig. 943. Moonstone and blue examples purchased from Arman Absentee Auctions, October 1, 1986, lots 177, 178. LSH

Estimate: \$80 - 120
Price Realized: \$103.50



©Jeffrey S Evans & Assoc. 2014

Lot#: 527

ASSORTED PRESSED OPEN SALTS, LOT OF EIGHT, including a fiery opalescent double example with eight-panel bowls and center handle and a deep amethyst Inverted Waffle example. Together with a glass salt spoon, nine pieces total. 1840-1900. Various sizes. *Amethyst example with a top-rim chip, one hexagonal example with a sizable chip to foot, remainder undamaged.* LSH

Estimate: \$50 - 100
Price Realized: \$46.00



©Jeffrey S Evans & Assoc. 2014

Lot#: 583

FREE-BLOWN FOOTED OPEN SALT, swirling amethyst, double-ogee bowl raised on a short compressed-knop stem and applied crude circular sloping foot with rough pontil mark. Possibly eastern Pennsylvania or New Jersey. Circa 1780-1820. 2 1/2" H, 2 1/4" D rim, 1 3/4" D foot. *Undamaged.* TBC

Estimate: \$200 - 400
Price Realized: \$690.00



Lot#: 587

FREE-BLOWN AND DECORATED PEDESTAL OPEN SALT, deep amber with opal loopings, raised on a drawn funnel base with folded rim, rough pontil mark in base of bowl. First half 19th century. 2 1/2" H, 2 5/8" D rim, 3 1/4" D foot. *Undamaged with some expected usage wear.* MID

Estimate: \$200 - 300

Price Realized: \$488.75



Lot#: 621

ASSORTED PATTERN-MOLDED ARTICLES, LOT OF THREE, colorless, comprising a 12-rib ogee-form footed salt, an 18-rib conical-form cordial glass, and a 14-diamond footed condiment jar with original patterned cover, each with rough pontil mark. Jar with old red accession number to base and cover. Circa 1790-1830. 2 1/2" to 5 1/4" HOA. *Jar rim and foot with some polishing, remainder undamaged.* TBC

Estimate: \$80 - 120

Price Realized: \$172.50



Lot#: 631

BLOWN-MOLDED GIII-23 HAT OPEN SALT, colorless, wide folded rim, rayed base with rough pontil mark. Boston & Sandwich Glass Co. Circa 1825-1835. 2 1/8" H, 2 3/8" x 2 5/8". *Undamaged.* Literature: B & K I, fig. 1323a. TBC

Estimate: \$100 - 150

Price Realized: \$138.00



Lot#: 632

BLOWN-MOLDED GIII-25 OPEN SALT, brilliant deep cobalt blue, cupped bowl with plain rim, raised on a drawn waisted stem and flared foot, ringed base with rough pontil mark. Boston & Sandwich Glass Co. 1825-1835. 2 1/8" H, 2 1/2" D rim, 2 1/8" D foot. *Undamaged*. Literature: Parallels B & K I, fig. 1434. TBC

Estimate: \$400 - 600

Price Realized: \$488.75



Lot#: 643

PATTERN-MOLDED FOOTED OPEN SALT, cobalt blue, double-ogee bowl patterned with 12 vertical ribs swirled slightly to the left at the rim, raised on a short ribbed stem and an applied circular sloping foot with rough pontil mark. United States or England. Circa 1810-1830. 2 3/4" H, 2" D rim, 1 7/8" D foot. *Undamaged*. Literature: Parallels Wilson - American Glass, vol. 1, p. 191, fig. 172, from the Barber collection. TBC

Estimate: \$100 - 200

Price Realized: \$316.25



Lot#: 698

ANGLO-IRISH CUT GLASS PAIR OF OPEN SALTS, colorless lead glass, sharp-diamond design, each deep conical form with serrated fan rim and polished base. First half 19th century. 2 1/4" H, 2 3/4" D. *Undamaged except for very minor roughness*. Provenance: From a prominent New England family.

Estimate: \$100 - 150

Price Realized: \$138.00



Lot#: 726

FREE-BLOWN AND ENGRAVED OPEN SALT, colorless non-lead glass, low cylindrical form, engraved laurel band at rim, polished pontil mark. Late 18th/first quarter 19th century. 1 3/4" H, 2 3/4" D. *Undamaged*, some light interior residue. Jeffrey S. Evans/GVA, May 30, 2005, lot 28. Ex-collection of Dr. Martin and Elizabeth Stohlman. VPC

Estimate: \$80 - 120

Price Realized: \$46.00



Lot#: 753

SILVERED / MERCURY GLASS OPEN SALT, engraved "B" within two foliate sprays, slight ogee-form bowl raised on a circular foot with a reddish paper covering the original cork seal imbedded in the rough pontil scar underneath. Probably Boston Silver Glass Co. or the Boston & Sandwich Glass Co. Circa 1855-1870. 2 1/2" H, 3" DOA. *Excellent undamaged condition with no losses or discoloration.* Literature: Parallels Lytwyn - Pictorial Guide to Silvered Mercury Glass, p. 136, bottom. Provenance: Collection of Diane Lytwyn.

Estimate: \$80 - 120

Price Realized: \$80.50



Lot#: 805

SANDWICH LOOP / GAINES TABLE ARTICLES, LOT OF SIX, fiery opalescent lead glass, comprising two sauce dishes, an egg cup, goblet, master open salt, and spooner. Boston & Sandwich Glass Co. 1850-1870. 1 1/8" to 6 1/8" H, 2 1/4" to 4" D. *Three undamaged articles, including two with mold roughness, spooner with a small, shallow pattern chip at the mold line, goblet with small to moderate, shallow chips around the foot, and a small pattern chip, salt with moderate to sizeable chips to the foot and scallops.* Provenance: From a Connecticut private collection.

Estimate: \$50 - 100

Price Realized: \$57.50



Lot#: 862

ASSORTED PRESSED LACY TOY ARTICLES, LOT OF SIX, colorless, including a barrel-form jug, handleless cup, and two oval dishes. Boston & Sandwich Glass Co. and others. 1830-1850. Tallest 1 5/8" H. *Small over dish with a moderate annealing crack to inner rim, remainder average to above average with some normal chipping/mold roughness.* PC

Estimate: \$80 - 120

Price Realized: \$80.50



Lot#: 869

ASSORTED GLASS TOY AND OTHER ARTICLES, LOT OF 12, various colors, including a cobalt blue plate and colorless lacy salt and compote. United States and others. 19th and 20th century. Blue plate 2 5/8" D. *Green saucer with a crack and blue mug with base chip, remainder primarily undamaged.* PC

Estimate: \$50 - 100

Price Realized: \$57.50



Lot#: 876

PATTERN-MOLDED FOOTED OPEN SALT, strong blue-green, double-ogee bowl patterned with 16 ribs swirled slightly to the right, raised on a short ribbed stem and an applied thick four-petal foot with rough pontil mark. Old label with 1964 loan number and inscribed white accession number under base. Midwestern. Circa 1810-1830. 2 1/2" H, 2 1/2" D rim, 2 1/4" D foot. *Undamaged.* Provenance: Purchased from Gary and Diana Stradling, NYC. PC

Estimate: \$300 - 500

Price Realized: \$1035.00



Lot#: 877

PATTERN-MOLDED FOOTED OPEN SALT, colorless, double-ogee bowl patterned with horizontal rows of 16 diamonds swirled to the right at the rim, raised on a short diamond-molded stem and an applied circular slopping foot with rough pontil mark. United States or England. Circa 1810-1830. 3" H, 2 1/2" D rim, 2 1/4" D foot. *Undamaged.* Literature: Parallels Wilson - American Glass, vol. 1, p. 183, fig. 152. Purchased from Arman Absentee Auctions. PC

Estimate: \$80 - 120

Price Realized: \$92.00



Lot#: 878

ROUND PEDESTAL BLOWN-MOLDED OPEN SALT, colorless with traces of gilt on rim, thick 18-lobe foot with rough pontil mark. 1840-1860. 2 3/8" H, 3" D. *Shallow chip under the rim, minor bruise to one lobe on foot.* MID

Estimate: \$50 - 80

Price Realized: \$103.50



Lot#: 879

UNRECORDED SIGNED WHEELING, VIRGINIA, colorless, scallop and point rim, embossed "WHEELING. / GLASS WORKS / 1844" under base. Possibly unique. Wheeling Glass Works, Wheeling, Virginia (now West Virginia). 1844. 1 5/8" H, 2 1/8" x 3 1/8". *Rim with a moderate chip at one end and other chipping/mold roughness, minor mold roughness to base.*

Catalogue Note: This salt was possibly produced at Michael and Robert Henry Sweeney's North Wheeling Flint Glass Works (1835-1845). Michael Sweeney was a great admirer of Henry Clay and the date pressed into the salt's base is the year that Sweeney produced his famous, mammoth cut glass punch bowl as a gift for Clay. In 1844 a large reception was held in Wheeling for Clay at which time the punch bowl was presented. It is possible that this salt was produced as a souvenir of that or a similar event. MID

Estimate: \$500 - 800

Price Realized: \$2760.00



Lot#: 880

BT-2A "PITTSBURGH" STEAMBOAT PRESSED OPEN SALT, smoky aquamarine, embossed on stern. Unlisted color, possibly unique. Stourbridge Flint Glass Works. 1830-1845. 1 1/2" H, 1 7/8" x 3 5/8". *Fair condition with loss to stern and keel, remainder of rim, bowsprit and paddle wheels intact with light mold roughness, two adjacent chips to table ring.* Literature: Neal, p. 22. Catalogue Note: An extremely rare color for pressed glass of this period. A color that is more closely associated with bottles. MID

Estimate: \$300 - 500

Price Realized: \$517.50



Lot#: 881

DI UNRECORDED DIVIDED PRESSED OPEN SALT, cobalt blue, rectangular form with Acanthus Leaf decoration, plain rim and divider, gadrooned foot, and waffle design under base. Probably extremely rare. 1830-1850. 1 1/2" H, 1 5/8" x 3". *Rim with one moderate and one small bruise, and a sliver chip at one end, foot lacking one corner and a chip to another corner, shallow chip under the base.* OPC

Estimate: \$50 - 100
Price Realized: \$184.00



Lot#: 882

EE-3 VARIANT EAGLE AND SHIELD PRESSED OPEN SALT, colorless, beads on shield are light on one side, star points under base do not touch in center, on four feet. Rare. Boston & Sandwich Glass Co. 1830-1845. 2 1/8" H, 2" x 3 1/8". *Well above average, rim with only some interior flaking/mold roughness, chip to one foot.* Literature: Neal, p. 77. Parallels B & K I, fig. 1453. OPC

Estimate: \$100 - 200
Price Realized: \$80.50



Lot#: 883

EE-3B VARIANT EAGLE AND SHIELD PRESSED OPEN SALT, colorless, on four feet, variation with double struck star in base. Scarce, possibly extremely rare. Boston & Sandwich Glass Co. 1830-1845. 2 1/8" H, 2" x 3 1/4". *Near proof having only a shallow chip to the inner rim and another to the interior of one foot.* Literature: Parallels Neal, p. 79. PC

Estimate: \$100 - 150
Price Realized: \$138



Lot#: 884

GA-4A GOTHIC ARCH AND HEART PRESSED OPEN SALT, mottled opaque powder blue with milky striations, even scallop rim. Unlisted color, possibly unique. Probably Boston & Sandwich Glass Co. 1835-1845. 1 3/4" H, 2" x 2 3/4". *Good condition for the fragile nature of this glass color. Top rim with two shallow chips and light flaking, small shallow chip to two corners, mold roughness to vertical corners and one foot, short annealing check off rim, as made.* Literature: Neal, p. 93. MID

Estimate: \$500 - 800
Price Realized: \$230



Lot#: 885

GA-4A GOTHIC ARCH AND HEART PRESSED OPEN SALT, colorless, even scallop rim. Rare. Together with a colorless Jacony-style open salt with applied handle and rough pontil mark. Two pieces total. First probably Boston & Sandwich Glass Co. 1835-1845. 1 3/4" H, 2" x 2 7/8". Gothic Arch example excellent with only two shallow chips to outer rim edge and some lightly flaking, basket example with crack at handle juncture. Literature: Neal, p. 93. VPC

Estimate: \$50 - 100
Price Realized: \$92.00



Lot#: 886

JY-2 JERSEY MARKED PRESSED OPEN SALT, colorless, embossed under base, scallop and point rim. Very rare. Jersey Glass Co. 1835-1850. 2" H, 2 1/8" x 3". Near proof with only a few very light chips/flakes to rim. Literature: Neal, p. 124. Purchased from Arman Absentee Auctions. PC

Estimate: \$200 - 300

Price Realized: \$172.50



Lot#: 887

NE-3B NEW ENGLAND MARKED PRESSED OPEN SALT, colorless, new designation with narrow cap ring, distorted base, and "Y" runs into edge of border, embossed under base but without surrounding leaves, scallop and point rim. Very rare, possibly extremely rare. New England Glass Co. 1835-1850. 1 7/8" H, 2 1/8" x 3". Near proof, rim with a shallow chip to one corner and open bubble to another corner, otherwise only a lightly tipped point and scallop. Literature: Parallels Neal, p. 140. See The Acorn, Volume 15, 2008/2009, p. 35 for new designation. Ex-collection of Frank Jedlicka. PC

Estimate: \$80 - 120

Price Realized: \$115.00



Lot#: 888

OL-20A DIAMOND STAR AND SCROLL OVAL PRESSED OPEN SALT, cloudy medium blue, complex shaped rim, crude design. Very rare. Possibly Pittsburgh area. 1830-1850. 1 5/8" H, 2 3/8" x 3 1/2". Two shallow pattern chips below rim, crack encircling three sides of base that likely occurred during annealing and does not affect the salt's resonance. Literature: Neal, p. 228. MID

Estimate: \$100 - 150

Price Realized: \$80.50



Lot#: 889

OL-20A VARIANT DIAMOND STAR AND SCROLL OVAL
PRESSED OPEN SALT,

violet blue, complex shaped rim, crude design. Base variation with lighter central scrolls and diamonds flanked by three distinct fern-like ornaments on each side, no inner-edge scallops. Extremely rare, possibly unique. Possibly Pittsburgh area. 1830-1850. 1 5/8" H, 2 1/2" x 3 1/2". *Excellent condition, several light scattered chips to rim, base with a moderate chip and several smaller chips underneath.* Literature: Parallels Neal, p. 228.

Estimate: \$300 - 500

Price Realized: \$195.50



Lot#: 890

OL-33 STRAWBERRY DIAMOND AND FLEUR-DE-LIS OVAL
PRESSED OPEN SALT,

colorless, low eight-lobe form with even-scallop. Extremely rare. Possibly Philadelphia area. 1830-1850. 3/4" H, 3" x 3 7/8". *Rim lacking three scallops, otherwise undamaged.* Literature: Neal, p. 242. Catalogue Note: This is the first example of this salt that we have sold. OPC

Estimate: \$100 -200

Price Realized: \$138.00



Lot#: 891

OO-16 DIVIDED VARIANT OCTAGON OBLONG PRESSED OPEN SALT,
colorless, unrecorded with center divider, serrated rim and divider, raised on a stepped base with waffle and star pattern to underside. Probably extremely rare. 1835-1850. 1 3/8" H, 2 1/4" x 3". *Near proof with only two shallow chips to inner rim and a flake to top of divider.* Literature: Parallels Neal, p. 184.

Estimate: \$150 - 250

Price Realized: \$138.00



Lot#: 892

OP-1 VARIANT CORNUCOPIA AND SHIELD PRESSED OPEN SALT,
colorless, unrecorded smooth rim like OP-2, raised on four claw feet. Possibly unique. Boston & Sandwich Glass Co. and others. 1835-1845. 2" H, 2 3/8" x 3 1/4". *Near proof with the usual inner-rim flaking/mold roughness.* Literature: Parallels Neal, p. 246 and B & K I, fig. 1445. MID

Estimate: \$200 - 400

Price Realized: \$258.75



Lot#: 893

OP-2C STRAWBERRY DIAMOND WITH PAW FEET PRESSED OPEN SALT, colorless, scallop rim, five-toe paws with claws, 27 rays under base. Rare. Boston & Sandwich Glass Co. 1835-1845. 2" H, 2 3/8" x 3 1/4". *Proof as made with just a hint of inner-rim mold roughness, small underfill to one scallop, light interior-only annealing check off rim that does not affect the resonance.* Literature: Neal, p. 252, listed in color only. Colorless recorded in The Acorn, Volume 15, 2008/2009, p. 55. Parallels B & K I, fig. 1444. PC

Estimate: \$80 -120
Price Realized: \$57.50



Lot#: 894

PO-6 PEACOCK EYE OVAL PRESSED OPEN SALT, strong electric blue, scallop rim, eight-point star base. Unlisted color, probably extremely rare. Boston & Sandwich Glass Co. 1830-1845. 1 1/2" H, 2 7/8" x 3 3/4". *Excellent condition, rim with one shallow chip, table ring with two chips to underside and two to outer edge.* Literature: Parallels B & K 1, fig. 1469a. OPC

Estimate: \$800 - 1200
Price Realized: \$431.25



Lot#: 895

RP-7 ROUND PEDESTAL GOTHIC ARCH PRESSED OPEN SALT, colorless, deep-scallop rim, scallop and point foot. Very rare. Possibly Boston & Sandwich Glass Co. Circa 1835-1850. 2 3/8" H, 3 1/8" D. *Proof except for one lightly tipped foot point.* Literature: Neal, p. 355. Like Elsholz, lot 1354. TPC

Estimate: \$80 - 120
Price Realized: \$195.50



Lot#: 896

SD-7 STRAWBERRY DIAMOND PRESSED OPEN SALT, pink, scallop and point rim. Rare. Boston & Sandwich Glass Co. 1827-1840. 2" H, 2 1/8" x 2 7/8". *Proof except for a chip to one outside under-rim corner that probably occurred during removal from the mold.* Literature: Neal, p. 449. Like Elsholz, lot 1572. Parallels B & K I, fig. 1439. PC

Estimate: \$80 - 120
Price Realized: \$138.00



Lot#: 897

SN-1B STAG'S HORN PRESSED OPEN SALT, cobalt blue, 32 rays under base. Rare. Possibly Boston & Sandwich Glass Co. 1835-1850. 1 3/4" H, 2" x 3 1/8". *Average condition, rim with two chips at one end, several flakes and normal mold roughness, base with a chip to one corner.* Literature: Neal, p. 429. Elsholz, lot 1518, this being the actual example. Richard A. Bourne Co., November 17, 1987, lot 1518. Ex-collection of William J. Elsholz (one retains collection label). Mason Smith, 11-17-85. PC

Estimate: \$100 - 150

Price Realized: \$57.50



Lot#: 898

WN-1A WAGON PRESSED OPEN SALT, colorless, rope rim, on four wheels. Extremely rare. Possibly Boston & Sandwich Glass Co. 1835-1850. 2" H, 2" x 3". *Rim with only two serrations tipped, three lower corners with a moderate chip, no other damage.* Literature: Neal, p. 464. Like Elsholz, lot 1578. Purchased from Richard A Bourne Co., date not recorded. Catalogue Note: The two examples of this variation included in this auction are the first that we have sold. The chipping to the corners is typical on this wagon salt. PC

Estimate: \$200 - 400

Price Realized: \$632.50



Lot#: 899

ASSORTED LACY PRESSED OPEN SALTS, LOT OF FOUR, colorless, comprising BF-1b, EE-1a, LE-3, and SD-2/2a. Plentiful to possibly very rare. Boston & Sandwich Glass Co. and others. 1830-1845. Various sizes. *Eagle example poor with two cracks, remainder well above average to near proof with only some minor chipping/mold roughness.* OPC

Estimate: \$80 - 120

Price Realized: \$161.00



Lot#: 900
 ASSORTED LACY
 PRESSED OPEN SALTS,
 LOT OF SIX,
 comprising a medium
 green NE-6, and
 colorless BS-3, CT-1a,
 GA-5, RD-8, and RD-
 27a. Plentiful to rare.
 1828-1840. Various
 sizes. *Green example in
 below average
 condition with
 moderate
 imperfections,
 remainder in average
 to near proof condition
 with come normal
 chips and mold
 roughness.* PC
 Estimate: \$80 - 120
 Price Realized: \$69.00



Lot#: 901

ROUND PEDESTAL HEAVY PRESSED OPEN SALT,
 sapphire blue, block and prism pattern to the underside of the thick bowl, plain foot.
 Circa 1840-1870. 2" H, 3" D rim, 2 1/2" D foot. *Undamaged except for a flake to inner
 rim, two short annealing checks off rim, as made.*

Estimate: \$80 - 120

Price Realized: \$69.00



Lot#: 902

ASSORTED GLASS OPEN SALTS,
 LOT OF THREE,
 colorless, comprising a blow-over
 and crack-off example, a cut
 Diamond Panel example, and a
 pressed Capstan-form raised on a
 heavy blown foot with rough
 pontil mark. Circa 1810-1860. 1
 1/2" to 4" H. *Capstan
 undamaged, blow-over with
 minor rim flakes, cut example
 with moderate flaking and
 roughness.* Provenance: From the
 collection of the late Dr. E. R.
 Eller, former curator at the
 Carnegie Institute, Pittsburgh.
 Estimate: \$80 - 120
 Price Realized: \$92.00