

**Jeffrey S. Evans & Associates**

Email: [info@jeffreysevans.com](mailto:info@jeffreysevans.com)

Website: [www.jeffreysevans.com](http://www.jeffreysevans.com)

**Mailing Address:**

P.O. Box 2638

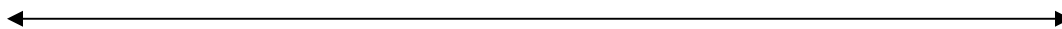
Harrisonburg, VA 22801

**Gallery Location & Shipping Address:**

2177 Green Valley Lane

Mt. Crawford, VA 22841

**Formerly Green Valley Auctions, Inc.**



**All auction information and images that follow are  
courtesy of Jeffrey S. Evans & Associates  
and is used here with their permission.**

**The same information may be found on their website.  
Only open salt and related lots are shown here for the  
benefit of open salt collectors. No further use of  
information or images without permission of  
Jeffrey S. Evans & Associates.**

# Open Salts – Jeffrey S. Evans Auction – January 18, 2014

Price realized include a 15% Buyer's Premium

Provenance reduced to previous owner's initials as below.

Greg & Joyce Prus collection of Plantsville, CT = GJP	Collection of Jessie and the late Eugene Long, Broadway, VA = JEL
Collection of Lloyd and Nannette Graham = LNG	Richard "Dick" and Mary Ann Krauss of Clyde, OH = RMK

	<p><b>Lot#: 59</b>                  BT-2 "PITTSBURGH." STEAMBOAT PRESSED OPEN SALT, deep purple blue/cobalt, embossed on stern, rope table ring. Very rare. Attributed to the Stourbridge Flint Glass Works, Pittsburgh, PA. 1830-1845. 1 1/2" H, 1 7/8" x 3 5/8". Rim with a moderate chip to one paddle wheel, chip to one side of stern, and loss of one tiny sawtooth, light crack off rim, bowsprit, keel, and table ring intact. Literature: Neal, p. 21. Like Elsholz, lot 139. Innes - Pittsburgh Glass, color pl. 6. Spillman - Corning, p. 174, fig. 651. GJP</p> <p>Estimate: 100.00 - 200.00                      Price Realized: 287.50</p>
--	--

	<p><b>Lot#: 60</b>                  BT-4D "LAFAYET" STEAMBOAT PRESSED OPEN SALT, deep brilliant cobalt blue, marked "B. &amp; S. / GLASS. / Co" on stern and "SANDWICH" on interior base. Rare. Boston &amp; Sandwich Glass Co. 1830-1845. 1 5/8" H, 2" x 3 5/8". Above average condition, rim with a small top-edge chip at rear and chipping/mold roughness to interior of stern, minor mold roughness to keel, no other damage. Does exhibit fairly heavy high-point wear. Literature: Neal, p. 28. B &amp; K I, fig. 1464b. Spillman - Corning, p. 175, fig. 655. Jeffrey S. Evans &amp; Associates, 10/29/11, lot 490. GJP</p> <p>Estimate: \$500 - 800                                  Price Realized: \$546.25</p>
--	--

	<p><b>Lot#: 61</b>                  BT-4D "LAFAYET" STEAMBOAT PRESSED OPEN SALT, colorless, marked "B. &amp; S. / GLASS. / Co" on stern and "SANDWICH" on interior base. Colorless not listed by Neal, rare. Boston &amp; Sandwich Glass Co. 1830-1845. 1 5/8" H, 1 7/8" x 3 5/8". Average condition with light chipping and mold roughness, which only minimally affects the profile. Literature: Neal, p. 28. Parallels B &amp; K I, fig. 1464b. Spillman - Corning, p. 175, fig. 654. GJP</p> <p>Estimate: \$100 - 200                                  Price Realized: \$184.00</p>
--	---

	<p><b>Lot#: 62</b>                  BT-8 "LAFAYET" STEAMBOAT PRESSED OPEN SALT, fiery opalescent soft medium blue with light mottling, marked "B. &amp; S. / GLASS. / Co" on stern and "SANDWICH" on interior and under base. Very rare. Boston &amp; Sandwich Glass Co. 1830-1845. 1 5/8" H, 1 7/8" x 3 5/8". Excellent condition, rim profile is proof with only a few minor inner-rim flakes, bowsprit and keel are proof, table ring with a chip and inner-edge roughness to one side. Literature: Neal, p. 33. Like Elsholz I, lot 144. Jeffrey S. Evans (GVA), 9/24/05, lot 1503. Provenance: Ex-collection of Bette Wicker. GJP</p> <p>Estimate: \$800 – 1,200                              Price Realized: \$690.00</p>
--	---



**Lot#: 63**

CD-4 LYRE PRESSED COVERED SALT, colorless, on four scrolled feet, variant cover with beads on rim interior arranged 10 x 20 x 10 x 20. Colorless not recorded by Neal, extremely rare. Boston & Sandwich Glass Co. 1835-1845. 2 3/4" HOA, 2" x 3 1/8" D base. Cover virtually proof with only a minor flake to the underside of one corner which does not affect the profile, base with a crack in one corner that does not affect the resonance, otherwise near proof. Literature: Neal, p. 43. Parallels B & K I, fig. 1451.

Estimate: \$300 – 500

Price Realized: \$747.50



**Lot#: 64**

CN-1B CROWN PRESSED OPEN SALT, fiery opalescent, on four scroll feet. Very rare. Boston & Sandwich Glass Co. 1830-1845. 2 1/8" H, 1 7/8" x 3 1/8". Near proof, rim with a very minor flake to the top edge and a flake to inner rim, otherwise only some light mold roughness to upper corners and feet. Literature: Neal, p. 48. GJP

Estimate: \$200 – 300

Price Realized: \$316.25



**Lot#: 65**

EE-3B EAGLE AND SHIELD PRESSED OPEN SALT, light opalescent, on four feet. Rare. Boston & Sandwich Glass Co. 1830-1845. 2 1/8" H, 2" x 3 1/4". Virtually proof having only a shallow chip to the interior of one foot and a flake to the interior of another. Literature: Neal, p. 79. B & K I, fig. 1453. Like Elsholz, lot 320, that was exhibited at the Detroit Institute of Arts, 1953. Jeffrey S. Evans & Associates, 10/29/11, lot 493. GJP

Estimate: \$150 - 250

Price Realized: \$316.25



**Lot#: 66**

GA-4 VARIANT GOTHIC ARCH AND HEART PRESSED OPEN SALT, opalescent medium blue, even scallop rim, on four bucket feet. Base like GA-4a. Rare. Possibly Boston & Sandwich Glass Co. 1835-1845. 1 3/4" H, 2" x 2 3/4". Large interior-rim chip that only slightly affects the rim profile, shallow chip to outer rim, shallow chip under the base, other light flaking/mold roughness. Literature: Parallels Neal, p. 92. Spillman - Corning, p. 180, fig. 680. GJP

Estimate: \$100 – 150

Price Realized: \$184.00



**Lot#: 67**

MV-1 MOUNT VERNON PRESSED OPEN SALT, grey blue, scallop and point rim. Rare. Boston & Sandwich Glass Co., Mount Vernon or Saratoga Glass Co. 1835-1850. 1 3/4" H, 2 1/8" x 2 7/8". Virtually proof with only some minute flaking/mold roughness. Literature: Neal, p. 132. Parallels B & K I, fig. 1462. Jeffrey S. Evans & Associates, 10/29/11, lot 496. GJP

Estimate: \$300 – 500

Price Realized: \$546.25

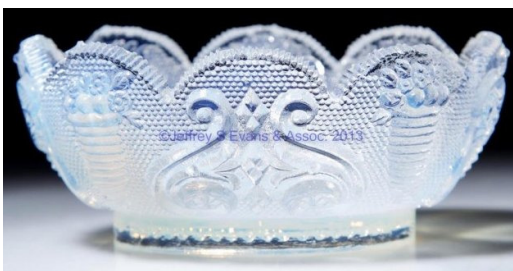


**Lot#: 68**

NE-1 VARIANT NEW ENGLAND MARKED PRESSED OPEN SALT, deep fiery opalescent, embossed under base, scallop and point rim. Two sides and one end rim lacking decorative elements, other end with just lower edge of elements. Probably extremely rare. New England Glass Co. 1835-1850. 1 3/4" H, 2 1/8" x 3". Proof except for a chip to the under edge of one upper corner, minor mold roughness. Literature: Parallels Neal, p. 137. GJP

Estimate: \$200 - 300

Price Realized: \$161.00



**Lot#: 69**

DOL-12A CORNUCOPIA AND SCROLL OVAL PRESSED OPEN SALT, light fiery opalescent, serrated large-scallop rim. Unlisted color in Neal, probably very to extremely rare. Boston & Sandwich Glass Co. 1830-1850. 1 3/8" H, 2 3/8" x 3 3/8". Virtually proof with only some very minor mold roughness to the rim interior. Literature: Parallels Neal, p. 215. Color listed in The Acorn, Volume 15, 2008/2009, p. 53. Jeffrey S. Evans & Associates, 10/29/11, lot 501. GJP

Estimate: \$200 - 300

Price Realized: \$431.25



**Lot#: 70**

OL-15 BEADED STRAWBERRY DIAMOND OVAL PRESSED OPEN SALT, brilliant deep purple blue, high and low point rim. Rare. Boston & Sandwich Glass Co. 1830-1850. 1 3/4" H, 2 1/4" x 3 1/2". Near proof for this salt, all high points intact, loss of one low point and another tipped, otherwise only some minor mold roughness. Literature: Neal, p. 219. Like Elsholz, lot 912. Parallels B & K I, fig. 1443. GJP

Estimate: \$300 - 500

Price Realized: \$517.50



**Lot#: 71**

SD-7 STRAWBERRY DIAMOND PRESSED OPEN SALT, medium yellow amber, scallop and point rim. Rare. Boston & Sandwich Glass Co. 1827-1840. 2" H, 2 1/8" x 2 7/8". Excellent condition, rim with a shallow chip at one end causing the loss of one scallop, otherwise only the partial loss of one side scallop and one point. Literature: Neal, p. 449. Spillman - Corning, p. 195, fig. 766. Parallels B & K I, fig. 1439. GJP

Estimate: \$300 - 500

Price Realized: \$488.75



**Lot#: 72**

SD-7 STRAWBERRY DIAMOND PRESSED OPEN SALT, deep cobalt blue, scallop and point rim. Scarce. Boston & Sandwich Glass Co. 1827-1840. 2" H, 2 1/8" x 2 7/8". Very good condition, rim with an interior chip causing the loss of one point and normal mold roughness, corners and feet with moderate mold roughness causing some losses to feet. Literature: Neal, p. 449. Spillman - Corning, p. 195, fig. 768. Parallels B & K I, fig. 1439. GJP

Estimate: \$100 – 200

Price Realized: \$184.00



**Lot#: 73**

SL-1 SHELL PRESSED OPEN SALT, deep peacock green, shaped rim. Extremely rare. Possibly Boston & Sandwich Glass Co. 1835-1850. 1 5/8" H, 2" x 3". Proof except for a small chip to one base corner and a shallow chip to side of base. Literature: Neal, p. 403. Parallels B & K I, fig. 1457. Spillman - Corning, p. 196, fig. 771 and color pl. 8. GJP

Estimate: \$400 - 600

Price Realized: \$1,035.00



**Lot#: 74**

SL-1 SHELL PRESSED OPEN SALT, deep red amethyst, shaped rim. Extremely rare. Possibly Boston & Sandwich Glass Co. 1835-1850. 1 5/8" H, 2" x 3". Excellent condition, rim is proof with only a few minor inner-rim flakes, base with a chip to three corners and two shallow chips to one side. Literature: Neal, p. 403. Parallels B & K I, fig. 1457. GJP

Estimate: \$300 - 500

Price Realized: \$488.75



**Lot#: 75**

SL-16 SHELL AND STAR PRESSED OPEN SALT, unlisted deep cobalt blue, tiny diamond point base, on four scroll feet. Probably extremely rare. Possibly Boston & Sandwich Glass Co. 1830-1850. 1 5/8" H, 2" x 3 1/8". Proof except for a minute flake to one corner and some light flaking/mold roughness to feet interior. Literature: Neal, p. 422. Jeffrey S. Evans & Associates, 10/29/11, lot 512. GJP

Estimate: \$500 - 800

Price Realized: \$1,035.00



**Lot#: 76**

BF BASKET OF FLOWERS PRESSED OPEN SALTS, LOT OF FOUR, comprising a rare opalescent BF-1b, a very rare violet blue BF-1b, an unlisted deep sapphire blue BF-1d with slight opalescence, and an unlisted light opalescent medium blue BF-1g with one rim end tab stippled. Boston & Sandwich Glass Co. 1830-1840. 2" H, 1 3/4" x 3". Opalescent fair condition with a large chip to one corner below the rim and some polishing, remainder in poor condition, two with crack, one with partial loss of one foot, losses to base corners, chipping and roughness. Literature: Neal, pp. 3 and 5. The Acorn, Volume 15, 2008/2009, p. 23. GJP

Estimate: \$100 - 150

Price Realized: \$149.50



**Lot#: 77**

ASSORTED LACY PRESSED OPEN SALTS, LOT OF TWO, comprising an opalescent BS-2 and a dull amber SN-1d. Scarce and rare. Boston & Sandwich Glass Co. and others. 1835-1850. 1 7/8" and 1 3/4" H. Opalescent example with a crack encircling one foot, otherwise near proof, amber with moderate chipping/mold roughness to rim and a flake to one base corner. Literature: Neal, pp. 9 and 431. GJP

Estimate: \$50 - 80

Price Realized: \$103.50



**Lot#: 78**

HEAVY RIBBED PRESSED OPEN SALT, translucent starch blue, circular form with 12 vertical ribs. 1840-1860. 1 3/4" H, 3 1/8" D. Excellent condition, minor flake to outer edge of rim and a shallow chip to edge of base. Provenance: Collector's Sales & Services, 3/27/94, lot 734. Ex-collection of Paul & Gladys Richards. GJP

Estimate: \$80 - 120

Price Realized: \$184.00



**Lot#: 85**

ASSORTED PRESSED LACY TOYS, LOT OF FOUR, comprising a light opalescent oval bowl with rope table ring, a colorless oval bowl with plain table ring, a colorless compote/nappy on high foot, and a colorless oblong octagonal dish on foot. Boston & Sandwich Glass Co. 1835-1850. 3/4" to 1 7/8" H. Excellent condition, oval bowls undamaged, compote with minute rim flake, oblong dish with two shallow rim chips and mold roughness. Literature: B & K III, figs. 3345 and 3346b. Provenance: From a Cape Cod Estate collection.

Estimate: \$100 - 150

Price Realized: \$161.00



**Lot#: 87**

ASSORTED PRESSED LACY TOYS, LOT OF FIVE, colorless, comprising a small tureen and undertray, an oval bowl with rope table ring, a compote/nappy on high foot, and a large undertray. Boston & Sandwich Glass Co. 1835-1850. Compote 2" H. Tureen, compote, and oval bowl near proof, both trays with rim chips. Literature: B & K III, fig. 3345. LNG

Estimate: \$100 - 150

Price Realized: \$195.50



**Lot#: 90**

ASSORTED PRESSED TOYS, LOT OF FOUR, comprising a blue Lacy bowl, colorless Hexagonal chamber stick, and a pair of electric blue Hexagonal candlesticks. 19th century. 7/8" to 2" H. Bowl with chip and roughness to a heavy fin on foot, otherwise undamaged. GJP

Estimate: \$80 - 120

Price Realized: \$80.50



**Lot#: 139**

ASSORTED PRESSED ARTICLES, LOT OF THREE, amber, comprising a Bird and Berry toothpick holder, a Swan open salt, and an unidentified pickle caster polished table ring, fitted in a Rogers & Bro. silver-plate frame, with cover, fork, and tongs. Late 19th/early 20th century. 2 1/2" to 11 3/8" HOA. Excellent condition overall, open salt with minute mold roughness, remaining articles undamaged. JEL

Estimate: \$50 - 100

Price Realized: \$184.00



**Lot#: 140**

ASSORTED EAPG ARTICLES, LOT OF FOUR, comprising a vaseline (uranium) Duncan No. 800/Heavy Finecut pickle jar, a Panel and File amber pickle jar, a green Hickman child's four-piece condiment set, and another colorless example. Fourth quarter 19th/early 20th century. 3" to 6" HOA. Vaseline jar with some small pattern flakes/bruises, remainder undamaged. Provenance: From a Washington state private collection.

Estimate: \$50 - 100

Price Realized: \$149.50



**Lot#: 221**

ASSORTED BLOWN AND PRESSED GLASS ARTICLES, LOT OF NINE, colorless and blue, including a deep free-blown bowl with boldly folded rim and rough pontil mark, two Italian cornucopia-form salts, and a cut glass pungent bottle with stopper. 19th and 20th century. Bowl 7 1/2" H, 11" D. Undamaged except for swan figure with chip under the base, bowl with some interior residue/wear. Provenance: From a private South Carolina collection.

Estimate: \$50 - 100  
Price Realized: \$34.50



**Lot#: 574**

ASSORTED BLUE ARTICLES, LOT OF FOUR, including a Dog and Hat toothpick holder, inkwell with a silver-plate rooster on the front and a sparrow on the cover. First quarter 20th century. 1/2" to 3" HOA. Excellent condition overall, inkwell with a shallow chip to the underside of the cover, remaining articles undamaged. JEL

Estimate: \$50 - 100  
Price Realized: \$126.50



**Lot#: 783**

WIDE PILLAR THREE-PIECE CONDIMENT SET, cased rose, comprising an open salt, pepper shaker with two-part lid and a mustard pot with a hinged lid, each with polychrome floral decoration. Fitted on an EPNS stand marked for Pinder, Sheffield Bros. and numbered 1962. Together with a pair of cased rose Pear-Dainty salt and pepper shakers, fitted on a quadruple-plate stand. Two pieces total. Fourth quarter 19th century. Condiments 1 1/8" to 3 5/8" HOA. Stand 6" HOA. Excellent condition overall, open salt with flakes/roughness to the rim, pepper shaker with a frozen, dented lid, remaining articles in the set undamaged. One shaker in the second set with a crack, resulting from a sizeable chip. RMK

Estimate: \$100 - 150  
Price Realized: \$172.50