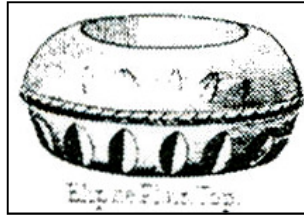


RO-FT-2-4



1-7/8" D x 3/4" H

ELLIPSE PLAIN TOP  
Bryce Bros. c.1880s

Known colors: Clear

Details: Has a plain top and 16 almond thumbprints around bottom with a protruding rope band at midsection. Rope lines start at center and extend to the right on top half and to the left on bottom half. 10 small daisy petals impressed in bottom is only 1/2" D.

