

H&J 945



H&J Image

Scroll down to see information pages for Hen on Nest ID.

2-1/2" L x 2" W x 2" H

WESTMORELAND NO. 3 TOY CHICK
Westmoreland Specialty Glass c. 1925

Known colors: Many

Note: Head tilted slightly right.



#3 - Toy Chick Salt

The #3 Toy Chick Salt was made by The Westmoreland Specialty Company as early as 1926, and measures 1 7/16" long; while it is 1 7/8" wide and 1 7/8" tall. The Chick was made in opal with a decorated comb, and retailed for 35 cents in 1932. They also made the little chick, at that time, in crystal or creme, and he retailed for 30 cents each; while those made in cased colors with decorated combs sold for 36 cents each. The little chick was also made in opal with a black or blue head, and this version was the most expensive, selling for 50 cents each. The #3 Toy Chick Salt was made continually throughout Westmoreland's production life, and can be found in a multitude of colors. By 1976, Westmoreland sold the #3 Chick in packs of 12 to the dealer for \$1.75 each. This means the chicks were retailing for \$3.50 each. Today, the #3 Chick, in color, seems to be more difficult to find than are those in milk glass, or cased colors.



HEN ON NEST

How to Distinguish the Manufacturer

DEGENHART



Degenhart circa 1966...the chick salts were made from an Island Co, (Weishar) mold in over 50 colors. Marked with the "D" in a heart for Degenhart in 1972

Identifying Features:

1. Straight Head and Tail
2. Neck and beak are thick.
3. Basket weave design on Nest sides and bottom
4. Scalloped Edge Top



Base 2-1/2" x 2" Top 2" x 1-1/2"

The mold was transferred to Boyd in 1978.



BOYD



Boyd circa 1978...Boyd calls this a "one-inch chick". Made from the Degenhart mold in over 220 colors. Marked with one of seven "B" in a diamond marks indicating a specific five-year period beginning in 1978. There is also a Boyd signature mark starting in 1997.

Identifying Features:

1. Straight Head and Tail
2. Neck and beak are thick.
3. Basket weave design on Nest sides and bottom
4. Scalloped Edge Top



Base 2-1/2" x 2" Top 2" x 1-1/2"



WESTMORELAND



Westmoreland #3 Chick salt: First produced about 1925. The designation of a "1" chick salt may be the way older glass companies and even Degenhart and Boyd today referred to their chick salts even though they are not that size. Made in a range of colors.

Identifying Features:

1. Head very Slightly turned to the right and Thicker Neck than Degenhart or Boyd
2. Straight Tail
3. Chucky beak, swirled feathers around the neck
4. Basket weave design on Nest sides and bottom
5. Scalloped Edge Top



Base 2-1/2" x 2" Top 2" x 1-1/2"

WESTMORELAND CONTINUED



Note: Westmoreland "cased" color is a unique glass decoration treatment where paint was mixed with glass frit and sprayed on milk glass then refired. The "cased" colors are cited as being made 1940-1980
 Base 2-1/2" x 2" Top 2" x 1-1/2"
 Later reproductions by Rosso

ROSSO



Toy Chick Salt: Often marked "R" in keystone. Produced from an original Westmoreland mold in 10 colors, many in satin.

Identifying Features: SEE WESTMORELAND ID FEATURES

Base 2-1/2" x 2" Top 2" x 1-1/2"

SMITH



First listed in company inventories in 1934. Referred to as a chick salt dip in the beginning, and then as a hen on nest beginning in 1951. They stopped appearing in catalogs after 1979.

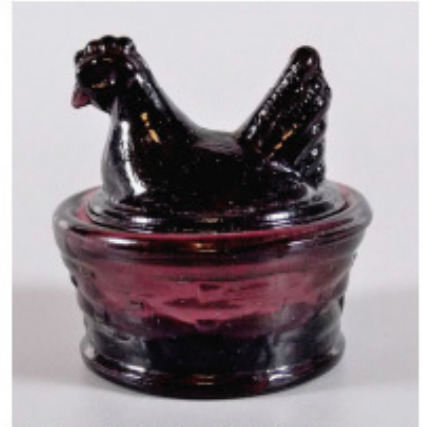
Identifying Features:

1. **Straight Head and Tail**
2. **Geometric Crosshatch Design on Nest sides**
3. **Smooth Plain bottom**



The Smith chick salt is often confused with the imports from Asia (or vice versa).
 Base 2-3/8" x 1-7/8"
 Top 2" x 1-1/2"

WETZEL/E.E. COLLECTIBLES



Wetzel F101 salt. The hen was made in several colors, and marked "R Wetzel" on the bottom edge.



In 1986 the mold and inventory was sold to Ed Bowman of E & E Collectibles. Reissued in 48 colors. Marked E.E. on the center bottom.
 Base 1 3/8" D. Top 1 3/16" D

Identifying Features:

- 1 **Straight Head and Tail**
- 2 **Basket weave design on Nest sides, Plain bottom**
- 3 **Straight Plain Edge Top**

MOSSER



Mosser salt chick No. 230 is an original mold first produced in 1987. Marked with an underlined "M" in the bowl.



Identifying Features:

1. Head Turned to the Left, Straight Tail
2. Vertical Rib design on Nest sides, Basket Weave bottom
3. Flared Rim with Scalloped Edge



Made in over 60 colors, some satin or iridized finishes. Found with decals and etched designs on the backs and basket rims.

Base 2-7/8"x 2-3/8"
Top 2"x 1-1/2"

SUMMIT



Summit CS-1 Chick Salt. As far as is known, this is an original Summit mold made in over 50 colors. It was listed as new in the Summit 1988 catalog. Usually marked with "V" in a circle.

Identifying Features:

1. Straight Head and Tail
2. Basket Weave Design on Nest sides Smooth Plain bottom
3. Scalloped Edge Top



Base 2-1/2"x 2-1/8"
Top 2-1/8"x 1-5/8"

VALLERYSTHAL



Vallerysthal 2-inch Chick Salt: Known in milk glass, blue opaque, amber, cobalt, transparent blue, transparent pink, green and clear.

Identifying Features:

1. Head very Slightly turned to the right
Straight Tail
2. Thin neck
3. Basket weave design on Nest sides and bottom
4. Scalloped Edge Top



Very similar to the Boyd, Degenhart, Westmoreland, and Japanese chick salts
Base 2-3/8"x 1-7/8"
Top 2"x 1-3/8"