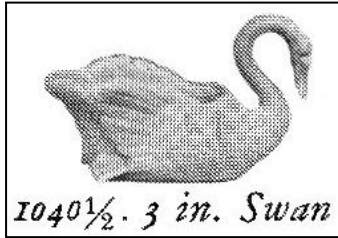


**H&J 936**



H&J Image



1040 1/2. 3 in. Swan

3-1/2" L x 2-7/8" W x 2-1/8" H

CAMBRIDGE NO. 1040-1/2

Cambridge Glass c.1928-33

Known colors: Cambridge names;  
Crystal, Carmen, Crown Tuscan,  
Late Dark Emerald, Mandarin Gold,  
Milk and Smoke

Note: This is the Type IIIB mold with  
spread wings. Glass is unmarked  
except for label. Sizes on this one will  
vary because of hand manipulation of  
wings and neck before cooling.

Scroll down for chart to  
determine swan makers or types



# IDENTIFICATION DIAGRAM CAMBRIDGE - BOYD - MOSSER SWANS

**TYPE I**






**TYPE II**



**TYPE III**

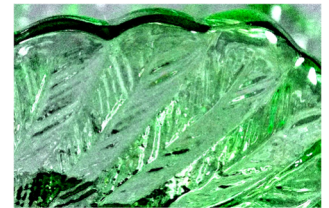


Is it marked M or B? Yes → Boyd  or Mosser  

No ↓

Are wing tips low with heavy feather detail? Yes → Cambridge Type I

No ↓



From the back, is the left foot larger than the right? Yes → Unmarked Mosser

No ↓



Can you feel a depression in the front part of the wings? Yes → Cambridge Type II

No ↓



Is the bowl widened and wings flared out? (2-1/2" or wider at wing tips) Yes → Cambridge Type IIIB

No ↓

Cambridge Type IIIA  
(2-1/4" wide at wing tips)

- |   |
|---|
| <p>Cambridge Colors Type I - 1928-33 - Crystal, Ebony, Light Emerald, Peachblo/Dianthus Pink</p> <p>Cambridge Colors Type II - 1933-39 - Crystal, Amber (light and dark), Carmen, Crown Tuscan, Ebony, Forest Green, Gold Krystol, Peachblo/Dianthus Pink, Royal Blue</p> <p>Cambridge Colors Type III - 1939-58 - Crystal, Carmen, Crown Tuscan, Late Dark Emerald, Mandarin Gold, Milk, Smoke</p> |
|---|