

H&J 935



H&J Image

3-3/8" L x 2-7/8" W x 2-1/4" H

CAMBRIDGE NO. 1040

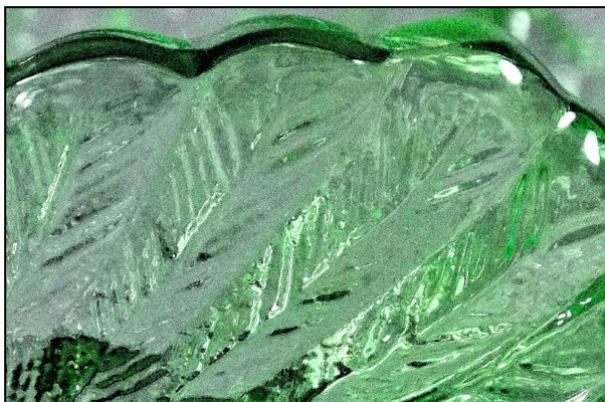
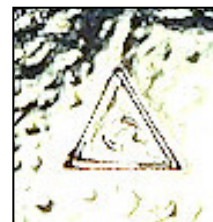
Cambridge Glass c.1928-33

Known colors: Cambridge names;
Crystal, Ebony, Light Emerald and
Peachblo/Dianthis Pink

Note: This is the Type I mold with
heavy feather detail. Marked with a
C in a triangle.



Scroll down for chart to
determine swan makers or types



IDENTIFICATION DIAGRAM CAMBRIDGE - BOYD - MOSSER SWANS

TYPE I






TYPE II



TYPE III

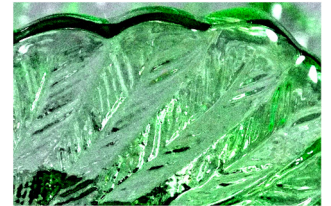


Is it marked M or B? Yes → Boyd  or Mosser  

No ↓

Are wing tips low with heavy feather detail? Yes → Cambridge Type I

No ↓



From the back, is the left foot larger than the right? Yes → Unmarked Mosser

No ↓



Can you feel a depression in the front part of the wings? Yes → Cambridge Type II

No ↓



Is the bowl widened and wings flared out? (2-1/2" or wider at wing tips) Yes → Cambridge Type IIIB

No ↓

Cambridge Type IIIA
(2-1/4" wide at wing tips)

- | |
|---|
| <p>Cambridge Colors Type I - 1928-33 - Crystal, Ebony, Light Emerald, Peachblo/Dianthus Pink</p> <p>Cambridge Colors Type II - 1933-39 - Crystal, Amber (light and dark), Carmen, Crown Tuscan, Ebony, Forest Green, Gold Krystol, Peachblo/Dianthus Pink, Royal Blue</p> <p>Cambridge Colors Type III - 1939-58 - Crystal, Carmen, Crown Tuscan, Late Dark Emerald, Mandarin Gold, Milk, Smoke</p> |
|---|