

H&J 926

2-1/2" L x 1-3/4" W x 2-1/4" H

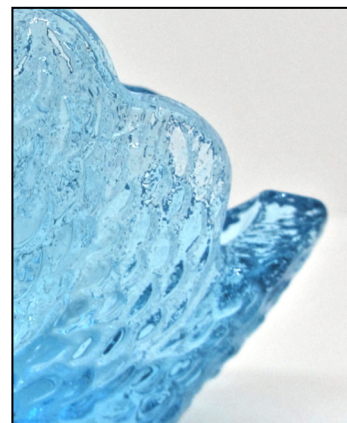
L. E. Smith Co. c.1970s

Known colors: Clear, amber, amethyst, blue, green and red

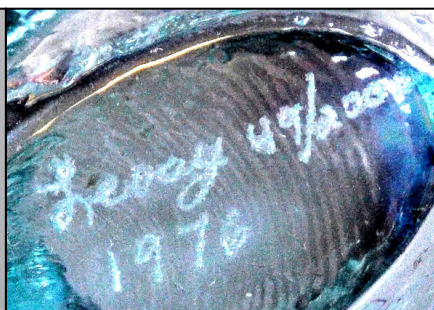
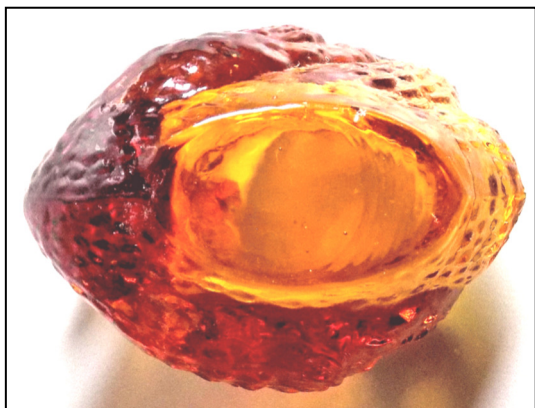
Note: Originally had a paper label. Appears to be two slightly different molds. Most notable difference is size of second feather section closest to the tail.
Same as H&J 878. Also see H&J 927.



H&J Image



H&J 926



Iridized by Levay Glass.
Signed Levay 1976, showing
it was 49 out of 200 made.



H&J 927