

H&J 905



H&J Image

1-7/8" D x 1-1/2" H

DAISY & BUTTON
Degenhart 1970-78

Sold by L. G. Wright

Note: Scroll down to next page.
Same as H&J 2099.



Item: Daisy & Button Salt (Original Degenhart Mold)

This mold was retired to the Degenhart Museum

Reference: H&J 905

Size: 1 7/8" Dia, 1 1/2" High

Remarks: Introduced by Degenhart in 1970 and marked with D in Heart starting in 1972. This salt was designed by Elizabeth Degenhart and was designed with two bottom designs, one Daisy & Button and the other plain. Both types were produced by Degenhart. This mold was retired to the Degenhart Museum and is not made by Boyd's. This was also made by L.G. Wright with the Daisy & Button Bottom. The best way to tell the Degenhart Daisy & Button is that the centers of the 4 Daisies around the outside are 2mm from the bottom edge and you can see part of the daisy between the daisy center and the edge.

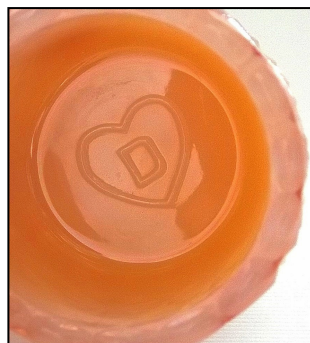


Colors: Degenhart (See attached list).

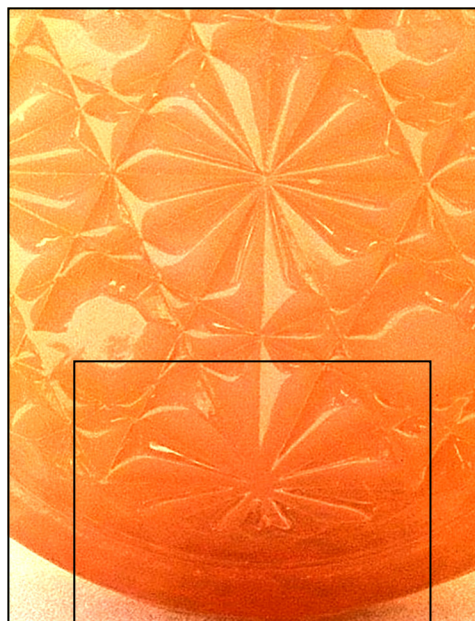
Degenhart Colors

Daisy & Button

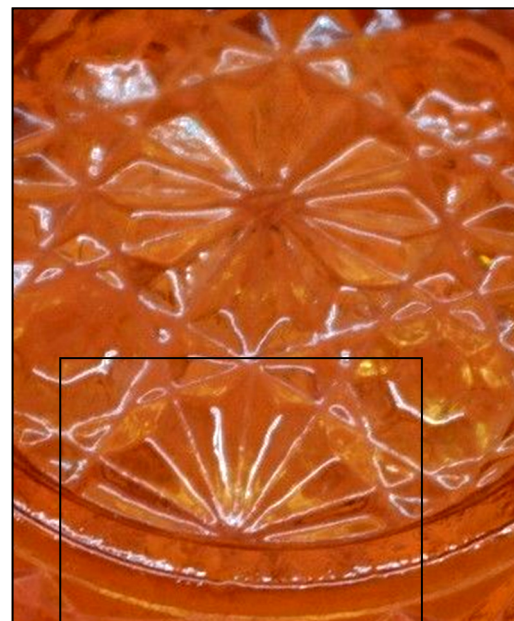
Amber	Forest Green
Amber Dark	Gold
Amberina	Heliotrope
Amethyst	Lime Ice
Apple Green	Milk Blue
Bittersweet	Milk White
Bluebell	Opalescent
Cambridge Pink	Peach Blo
Cobalt	Persimmon
Crown Tuscan	Pink
Crystal	Red
Custard	Rose Marie
Delft Blue	Sapphire
Dichromatic	Sunset
Elizabeths Blue	Tomato
Emerald Green	Vaseline



There are some unmarked Degenhart in this shape. Difference is shown below. Petals on Degenhart continue below center. Petals do not extend beyond center on the Wright version.



Degenhart



L. G. Wright

Wright glass was made by Fenton, New Martinsville, Fostoria, Morgantown, Paden City and others.

L.G. Wright Item: 22-45 Daisy & Button Round Salt Dip (Mold purchased by Fostoria Collectors) (Now at Wilkerson Glass)

Reference: H&J 905

Size: 1 7/8" Dia, 1 1/2" High

Remarks: This was also made by Degenhart with the Daisy & Button Bottom. The best way to tell the Degenhart Daisy & Button is that the centers of the 4 Daisies around the outside are 2mm from the edge on the Degenhart ones and the center of the Daisies on the Wright ones are on the edge.

Colors: Amber, Lt Blue, Crystal, Green, Amethyst, Red, Milk, Amberina

