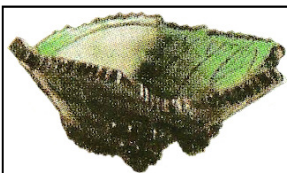
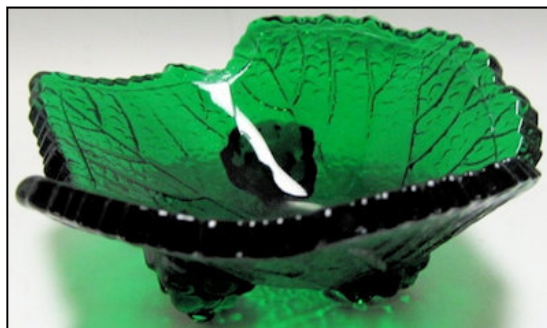
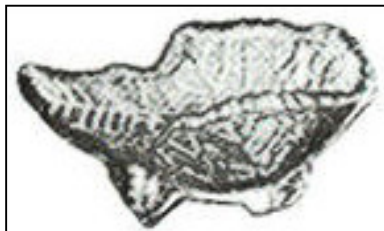


# H&J 605



H&J Image



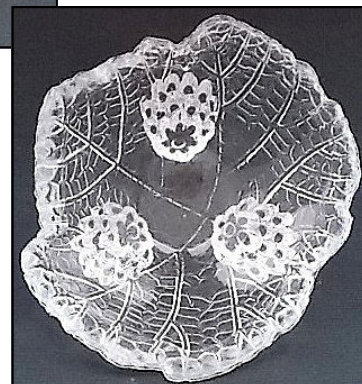
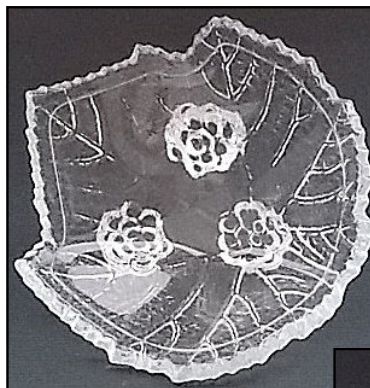
2-1/2" L x 2-3/8" W x 1" H

FOSTORIA NO. 2513  
aka: GRAPE LEAF

Fostoria Glass Co. c.1935-42

Known colors: Clear,  
Burgundy, Empire Green  
and Regal Blue

Note: Fostoria called this  
an individual almond.  
L. E. Smith repro (bottom  
right) rim is smoother and  
feet are elongated. **Scroll  
down to see comparisons.**  
Same as H&J 415 & 636.



# FOSTORIA and L.E. SMITH GRAPE LEAF NUT DISHES or OPEN SALTS

By Judy Chisum



## Fostoria Clear Dish

2-5/8" Long – Back to Tip  
2-1/2 " Wide  
15/16" High

Pointed leaf tips with a serrated edge, three grape cluster-shaped feet that stay in a half inch round cluster.



## L. E. Smith Clear Salt

2-3/8 " Long – Back to Tip  
2-5/8" Wide  
15/16" High

Rounded leaf tips with less pronounced edge than Fostoria. Three grape cluster feet that graduate up the side and form an oval.



Fostoria introduced their number 2513 GRAPE LEAF nut dish in 1935 and discontinued it in 1942. It was available in clear, burgundy, empire green and regal blue.



L.E. Smith is found in clear, white milk glass, **RARE** flashed marigold, blue and pink; also clear with cranberry feet.