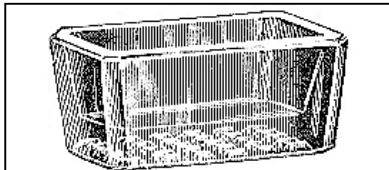


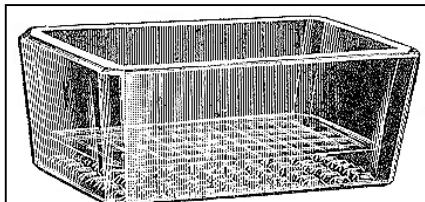
# H&J 561



H&J Image



No. 2614, Square Ind. Salt.



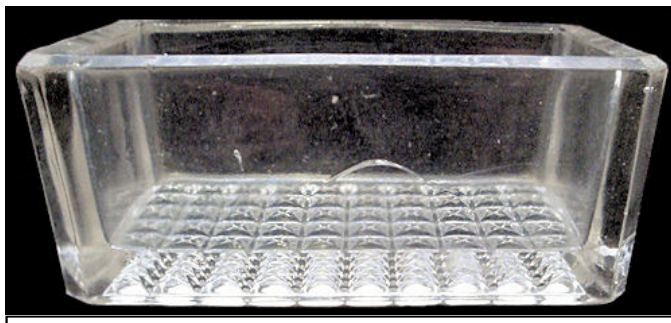
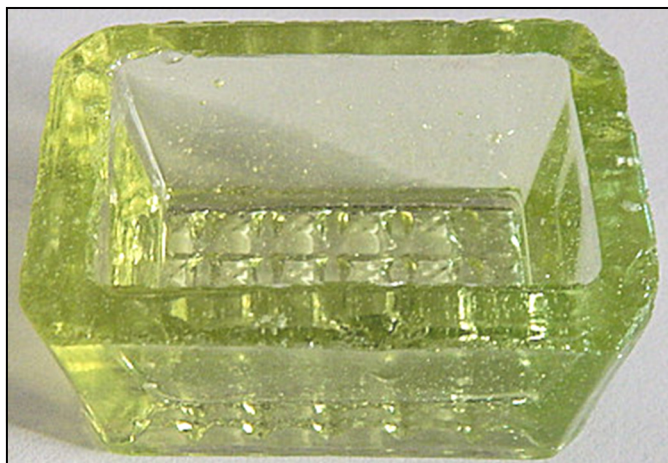
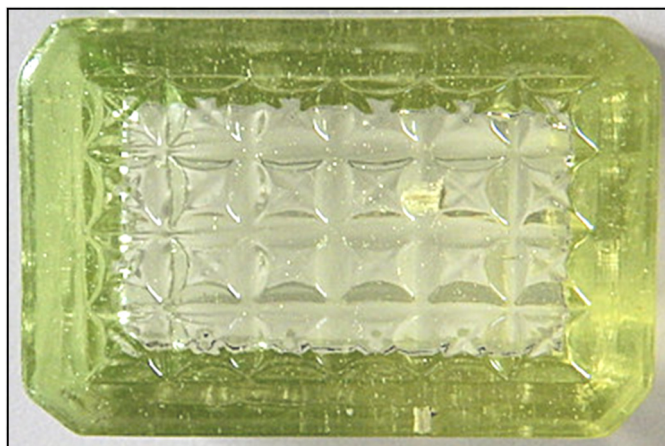
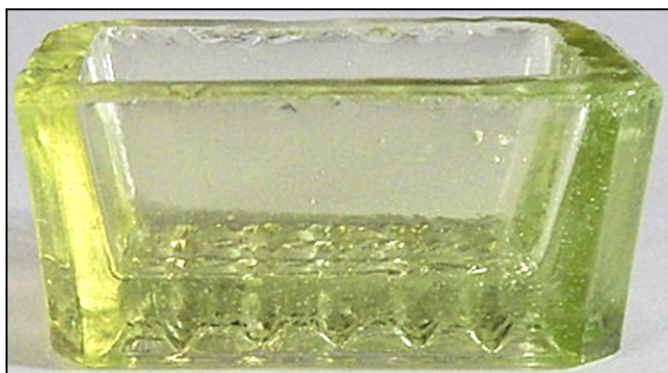
No. 2613, Square Table Salt.

2-1/8" L x 1-7/16" W x 15/16" H  
2-1/8" L x 1-1/2" W x 1" H

CAMBRIDGE NO. 2614  
Cambridge Glass c.1910

Known colors: Clear, amber,  
cobalt, blue, green and yellow

Note: Imperial acquired mold  
from Cambridge. Unknown if  
mold was reworked by Cam-  
bridge or Imperial but one has a  
more beveled rim. Contemporary  
version with 77 square waffle  
bottom later made by Wetzel  
and Bowman, both marked.  
Same as H&J 430 and 2796.



3-1/2" L x 2-1/4" W x 1-1/4" H (Master size)

