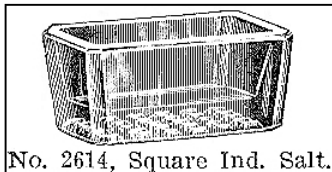


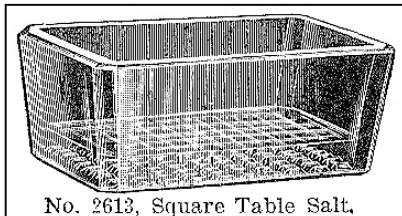
# H&J 430



H&J Image



No. 2614, Square Ind. Salt.



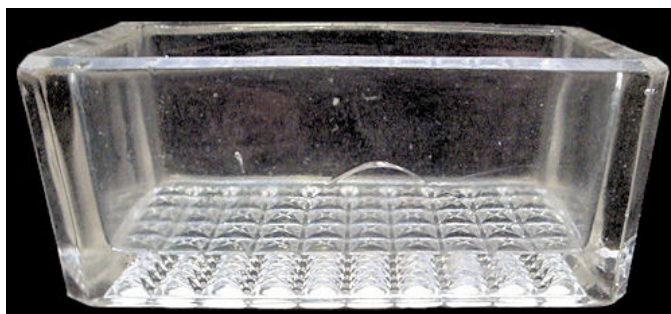
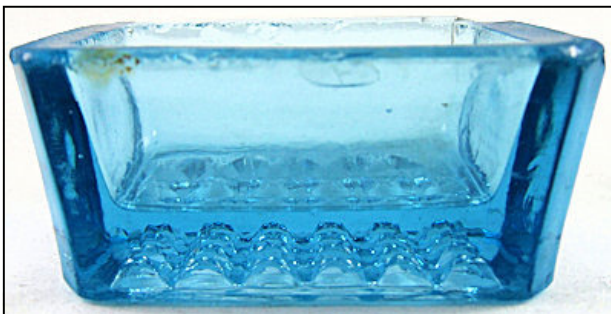
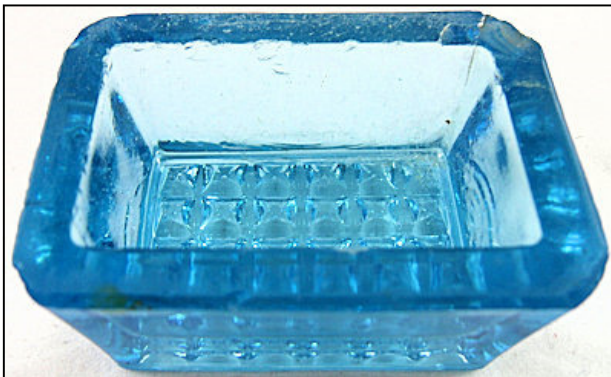
No. 2613, Square Table Salt,

2-1/8" L x 1-7/16" W x 15/16" H  
2-1/8" L x 1-1/2" W x 1" H

CAMBRIDGE NO. 2614  
Cambridge Glass c.1910

Known colors: Clear, amber, blue, cobalt, green and yellow

Imperial acquired mold from Cambridge. Unknown if mold was reworked by Cambridge or Imperial but one has a more beveled rim. Contemporary version with a 77 square waffle bottom later made by Wetzel and Bowman, both marked. Same as H&J 561 and 2796.



3-1/2" L x 2-1/4" W x 1-1/4" H (Master size)

