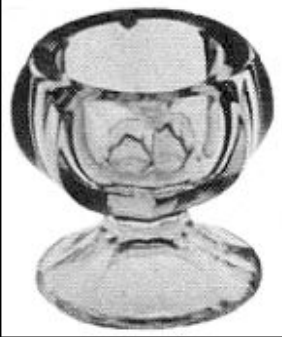


# H&J 2957



H&J Image



No. T787 Individual Salt

1-13/16" PP x 1-9/16" H

CENTRAL NO. T787

Central Glass Works c.1925

Known colors: Clear

Note: These flat topped pedestals, as well as the scallop top ones are some of the hardest salts to identify positively. The salts do have differences but it's hard to tell which is which in the H&J book.



Comparison below of salts shown in H&J 2957 and 2958. Clear glass is thicker at the rim. Westmoreland mold is the one known to have been reproduced by Summit.

