

H&J 2947



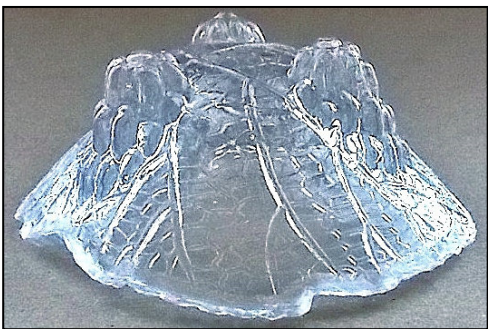
H&J Image

2-3/8" L x 2-1/2" W x 1" H

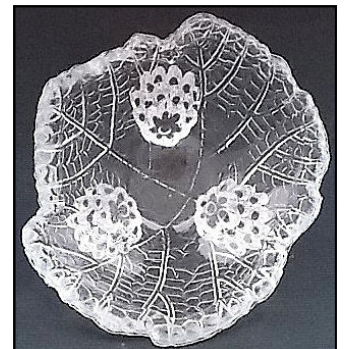
L. E. Smith

Known colors: Clear and Milk white; iridized and stained

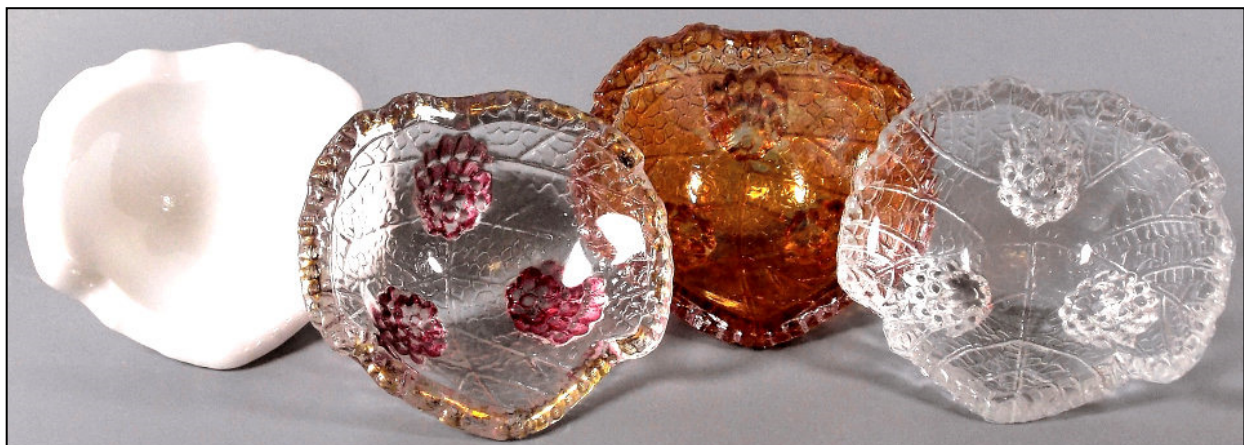
Note: Often confused with FOSTORIA NO. 2513 (H&J 415, 605 & 636). L. E. Smith reproduction (below right) rim has rounded points and feet are elongated. **Scroll down to see comparison sheet.**



Fostoria No. 2513



L. E. Smith



FOSTORIA and L.E. SMITH GRAPE LEAF NUT DISHES or OPEN SALTS

By Judy Chisum



Fostoria Clear Dish

2-5/8" Long - Back to Tip
2-1/2" Wide
15/16" High

Pointed leaf tips with a serrated edge, three grape cluster-shaped feet that stay in a half inch round cluster.



L. E. Smith Clear Salt

2-3/8" Long - Back to Tip
2-5/8" Wide
15/16" High

Rounded leaf tips with less pronounced edge than Fostoria. Three grape cluster feet that graduate up the side and form an oval.



Fostoria introduced their number 2513 GRAPE LEAF nut dish in 1935 and discontinued it in 1942. It was available in clear, burgundy, empire green and regal blue.



L.E. Smith is found in clear, white milk glass, **RARE** flashed marigold, blue and pink; also clear with cranberry feet.