

# Open Salts

## Summit Art Glass, Ravenna, Ohio

Russell and JoAnn Vogel song started in the Glass business selling and having glass items made for them in their molds. In 1984 they decided to open their own glass factory in Ravenna, Ohio and the rest is history. The Summit Art Glass Company was the result. Some of the Summit items are marked with the V in Circle and others are unmarked or marked with the old marks that were in the molds when purchased. Some items may be found with their paper label. However due to the passing of Russell in the Fall of 2005 and the high price of gas, the factory closed. JoAnn and her son decided to dispose of the operation in 2006 and their molds went in several directions. Some to the Cambridge Collectors, some to other individuals like Ed Bowman and several to Helen & Phil Ross Wholesale Glass.



V in Circle



Summit Paper Label



Imperial Mark



Westmoreland Mark

(This information was updated as of October 1, 2010 with information available at that time)

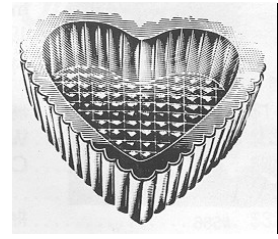
### Summit Art Glass Item EU-1 Heart Salt Dip (Westmoreland Mold)

**Sold to Bowman in 2006**

Reference: H&J 3022      Size: 1 3/4" Long, 1 5/8" Wide, 1/2" High

Remarks: Found with picture of Shirley Temple in Vaseline

Colors: Blue Smoke, Amberina, Siera Gold, Cobalt, Red, Black, Vaseline, Ice Blue Vaseline Irid, Plum, Plum Irid, Sea Mist, Sea Mist Irid



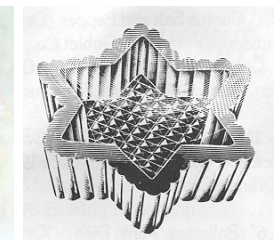
### Summit Art Glass Item EU-2 Six Point Star Salt Dip (Westmoreland Mold)

**Sold to Bowman in 2006**

Reference: H&J 3027      Size: 1 3/4" Dia, 1/2" High

Remarks:

Colors: Blue Smoke, Amberina, Siera Gold, Cobalt, Red, Black, Vaseline, Vaseline Irid



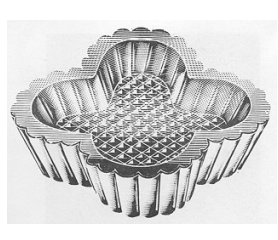
### Summit Art Glass Item EU-4 Four Loop Salt Dip (Westmoreland Mold)

**Sold to Bowman in 2006**

Reference: H&J 3020      Size: 2" Dia, 1/2" High

Remarks:

Colors: Blue Smoke, Amberina, Siera Gold, Cobalt, Red, Black, Vaseline



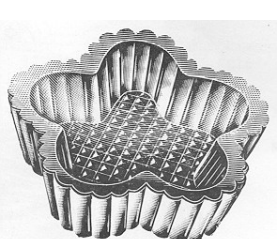
### Summit Art Glass Item EU-5 Five Loop Salt Dip (Westmoreland Mold)

**Sold to Bowman in 2006**

Reference: H&J 3021      Size: 1 5/8" Dia, 1/2" High

Remarks:

Colors: Blue Smoke, Amberina, Siera Gold, Cobalt, Red, Black, Vaseline



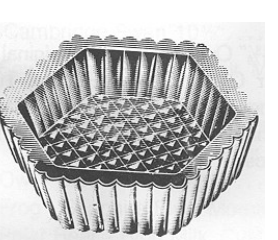
### Summit Art Glass Item EU-6 Six Sided Salt Dip (Westmoreland Mold)

**Sold to Bowman in 2006**

Reference: H&J 3025      Size: 1 5/8" Dia, 1/2" High

Remarks:

Colors: Blue Smoke, Amberina, Siera Gold, Cobalt, Red, Black, Vaseline



**Summit Art Glass Item #1 Duck Salt (Westmoreland Mold)**

**Sold to Rosso in 2006**

**Reference:** H&J 1020

**Size:** 5 1/8" Long, 1 5/8" Wide, 2 1/8" High

**Remarks:** Marked with Westmoreland W over G mark on bottom.

**Colors:** Cobalt, Cobalt Irid, Morning Glory, Evergreen, Blue Milk, Milk, Crystal, Crystal Irid, Chocolate Slag, Chocolate Slag Irid, Amethyst Slag, Amethyst Slag Irid, Apple Green, Sahara Gold, Sky Blue, End of Day Slag, Black, Vaseline, Vaseline Irid, Amethyst, Amethyst Irid, Red, Princess Purple, Princess Purple Irid, Bittersweet, Bittersweet Irid, Sea Mist, Sea Mist Irid,



**Summit Art Glass Item 3400 4 Toe Salt Dip (Cambridge Mold #3400/71, )**

**Sold to Cambridge Collectors in 2006**

**Reference:** H&J 627

**Size:** 2 1/2" across tabs, 2 1/8" Dia, 1 3/4" High

**Remarks:** Reference is general shape as Summit pieces are not flared out when taken from the mold like the reference was.

**Colors:** Cobalt, Sky Blue, Rubina, Red, Amethyst, Plum, Plum Irid, Morning Glory, Apple Green



**Summit Art Glass Item AZ-1 Azalea Master Salt (Imperial Mold)**

**Sold to Rosso in 2006**

**Reference:** H&J 153

**Size:** 2 5/8" Dia, 2 5/8" High

**Remarks:**

**Colors:** Cobalt, Teal, Cobalt Irid, Amberina, Malachite, Malachite Irid, Vaseline, Vaseline Irid, Ice Blue, Ice Blue Irid, Purple Opalescent, Purple Opalescent Irid



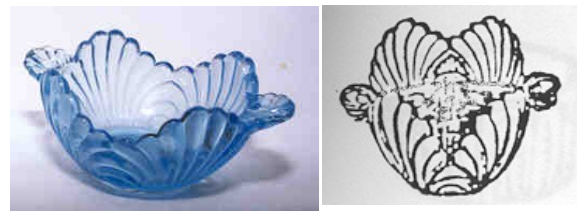
**Summit Art Glass Item C-10 Caprice 2 Handle Salt (Cambridge Mold, Caprice # 93)**

**Sold to Cambridge Collectors in 2006**

**Reference:** Sm 361-2-2 **Size:** 3 1/8" At Handles, 2 1/2" Wide, 1 1/4" High

**Remarks:** Mark dot in bottom center on some. Found with Shirley Temple in Teal, Hopalong Cassidy in Cobalt

**Colors:** Cobalt, Siera Gold, Sky Blue, Red, Teal, Black, Plum Opal, Morning Glory, Vaseline Opal, Smoke



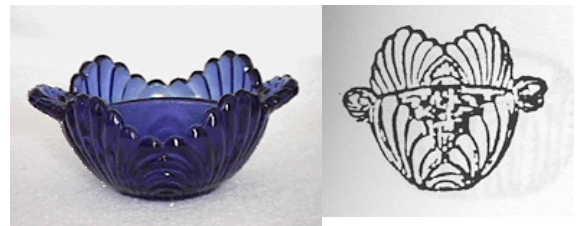
**Summit Art Glass Item C-10D Caprice 2 Handle Divided Salt (Cambridge Mold, Caprice #94, same mold as #93 only different plunger.)**

**Sold to Cambridge Collectors in 2006**

**Reference:** None **Size:** 3 1/8" At Handles, 2 1/2" Wide, 1 1/4" High

**Remarks:** Mark dot in bottom center on some

**Colors:** Cobalt, Siera Gold, Sky Blue, Red, Black, Apple Green, Morning Glory, Vaseline Opal, Rubina, Plum Opal, Vaseline, Vaseline Irid, Milk, Sea Mist, Sea Mist Irid,



**Summit Art Glass Item C-95 Caprice Round Salt (Cambridge Mold, Caprice #95)**

**Sold to Cambridge Collectors in 2006**

**Reference:** H&J 448

**Size:** 2 1/8" Dia Bowl, 1 1/8" High

**Remarks:** Mark dot in bottom center on some. Some of the first ones they made had IG mark inside bowl.

**Colors:** Cobalt, Watermelon, Rubina, Shara Gold, Blue Milk, Milk, Apple Green, Red, Black, Morning Glory, Vaseline, Vaseline Irid, Med Blue, Sea Mist, Sea Mist Irid, Med Blue Irid, Smoke, Ice Blue, Jadite, Bittersweet (Red Orange Slag)

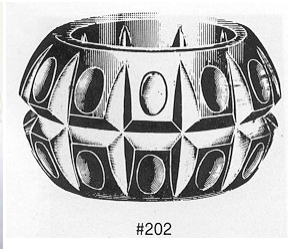


**Summit Art Glass Item 202 Thumbprint Salt (Westmoreland Mold)**

**Sold to Rosso in 2006**

**Reference:** H&J 2551

**Size:** 1 3/4" Dia, 1" High



#202

**Remarks:**

**Colors:** Cobalt, Blue Milk, Milk, Apple Green, Red, Sky Blue, Apple Green Slag, Amethyst, Amethyst Irid, Aqua Opal, Alexandrite, Gold Slag, Blue Slag, Amethyst Slag, Red Orange, Malachite, Smoke Blue Irid, Amberina, Vaseline, Vaseline Irid, Plum Opal, Vaseline, Vaseline Irid, Black, Dk Amber, Purple Opalescent, Purple Opalescent Irid, Jadite, Azurite

**Summit Art Glass Item 203 Zipper Salt (Westmoreland Mold)**

**Sold to Rosso in 2006**

**Reference:** H&J 2558

**Size:** 1 3/4" Dia, 1 1/8" High



#203

**Remarks:**

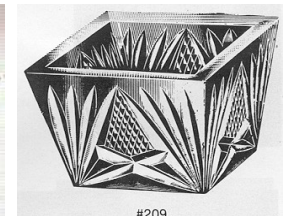
**Colors:** Cobalt, Cobalt Irid, Milk, Red, Black, Plum Opal, Dark Amethyst, Dark Amethyst Irid, Milk Opal, Gold Slag, Blue Slag, Amethyst Slag, Purple Opalescent, Purple Opalescent Irid

**Summit Art Glass Item 209 Square Salt (Westmoreland Mold)**

**Sold to Rosso in 2006**

**Reference:** H&J 3224

**Size:** 1 5/8" Square, 1 1/8" High



#209

**Remarks:**

**Colors:** Cobalt, Cobalt Irid, Chocolate, Chocolate Irid, Amethyst, Amethyst Irid, Malachite, Malachite Irid, Apricot, Apricot Irid, Vaseline, Vaseline Irid, Med Blue, Med Blue Irid, Sea Mist, Sea Mist Irid, Purple Opalescent, Purple Opalescent Irid, Jadite, Milk

**Summit Art Glass Item 210 V Salt (Westmoreland Mold)**

**Sold to Rosso in 2006**

**Reference:** H&J 886

**Size:** 1 3/4" Dia, 1" High



#210

**Remarks:**

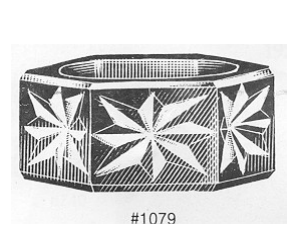
**Colors:** Cobalt, Cobalt Irid, Amethyst, Amethyst Irid, Morning Glory, Amberina, Apple Green, Milk, Blue Milk, Red, , Dark Amethyst, Dark Amethyst Irid, Aqua Opal, Black, Rubina, Plum Opal, Smoke Blue Irid, Vaseline, Red, Med Blue, Orange, Opalescent Milk, Jadite, Azurite, Vaseline, Vaseline Opal

**Summit Art Glass Item 1079 Starburst Salt (Westmoreland Mold)**

**Sold to Rosso in 2006**

**Reference:** H&J 514

**Size:** 1 7/8" Dia, 7/8" High



#1079

**Remarks:** This starburst salt is a little larger than most.

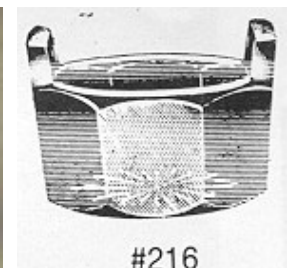
**Colors:** Cobalt, Milk, Sky Blue, Red, Vaseline, Vaseline Irid, Med Blue, Med Blue Irid, Sea Mist, Sea Mist Irid,

**Summit Art Glass Item 216 Tub Salt (Westmoreland Mold)**

**Sold to Rosso in 2006**

**Reference:** H&J 2848

**Size:** 1 3/4" Dia, 1 1/4 High



#216

**Remarks:**

**Colors:** Cobalt, Cobalt Irid, Milk, Red, Black, Blue Slag, Blue Slag Irid, Vaseline, Vaseline Irid, Green Milk, Green Milk Irid, Sea Mist, Sea Mist Irid,

**Summit Art Glass Item 217 Paneled Pedestal (Westmoreland Mold)**

**Sold to Rosso in 2006**

**Reference:** H&J 2957

**Size:** 1 3/4" Dia, 1 5/8" High

**Remarks:**

**Colors:** Cobalt, Amberina, Milk, Red, Sky Blue, Blue Milk, Vaseline



**Summit Art Glass Item 300-1 Round English Hobnail (Westmoreland Mold)**

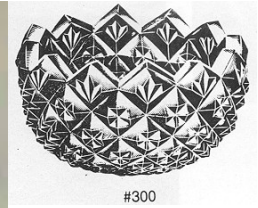
**Sold to Rosso in 2006**

**Reference:** H&J 515

**Size:** 1 3/4" Dia, 7/8" High

**Remarks:**

**Colors:** Cobalt, Teal, Milk, Apple Green, Amberina, Rubina, Chocolate, Chocolate Irid, Red, Sky Blue, Ice Blue, Morning Glory, Apple Green Slag, Golf Slag, Blue Slag, Amethyst Slag, Amethyst, Amethyst Irid, Black, Apricot, Apricot Irid, Vaseline, Rubina, Purple Opalescent, Purple Opalescent Irid



**Summit Art Glass Item 300 Zipper Salt (Imperial Mold)**

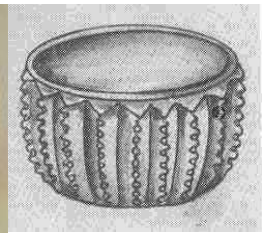
**Sold to Rosso in 2006**

**Reference:** H&J 911

**Size:** 2" Dia, 1" High

**Remarks:**

**Colors:** Cobalt, Cobalt Irid, Orange Crystal, Milk, Apple Green, Amberina, Red, Red Irid, Sky Blue, Apple Green Slag, Black, Smoke Blue Irid, Vaseline, Green Slag, Vaseline Opalescent,



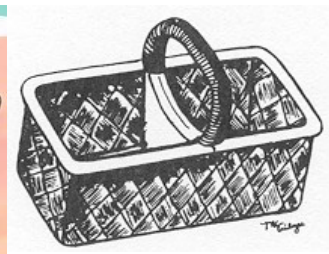
**Summit Art Glass Item 428 Basket Salt (Imperial Mold)**

**Sold to Rosso in 2006**

**Reference:** Smith 263-5-3 **Size:** 4" Long, 2 1/4" Wide, 2 3/4" High

**Remarks:**

**Colors:** Cobalt, Cobalt Irid, Sky Blue, Red, Amberina, Amethyst, Amethyst Irid, Blue Slag, Med Blue, Med Blue Irid, Green Milk, Green Milk Irid, Blue Sea Mist, Lt Green Sea Mist, Sea Mist Irid,



**Summit Art Glass Item 600 Pedestal Salt (Imperial Mold)**

**Sold to Rosso in 2006**

**Reference:** H&J 866

**Size:** 2 1/8" Dia, 2 1/8" High

**Remarks:** Marked IG Anaheim 1969 on bottom. Later one overmarked with V

**Colors:** Cobalt, Red, Aqua Opal, Aqua Opal Irid, Amberina, Rubina, Amethyst, Amethyst Carnival, Red Orange, Red Orange Irid, Vaseline, Vaseline Irid, Med Blue, Med Blue Irid, Sea Mist, Sea Mist Irid, Purple Opalescent, Purple Opalescent Irid



**Summit Art Glass Item 600 Pedestal Salt Crimped Top (Imperial Mold)**

**Sold to Rosso in 2006**

**Reference:** None

**Size:** 2 1/2 Dia, 2 1/8" High

**Remarks:** Marked IG Anaheim 1969 on bottom. Later one overmarked with V Same as Item 600 except rim is crimped when removed from the Mold.

**Colors:** Cobalt, Red, Med Blue, Med Blue Irid



**Summit Art Glass Item 909 Lacy Daisy Round Salt (Westmoreland Mold)**

**Sold to Rosso in 2006**

**Reference:** H&J 351      **Size:** 2 3/8" Dia, 7/8" High

**Remarks:** Found with pictures of Batman & Archie in Milk, Hopalong Cassidy in Cobalt & Shirley Temple in Teal and Black. Westmoreland mark in center of bottom.

**Colors:** Cobalt, Cobalt Irid, Orange Crystal, Red, Amberina, Milk, Apple Green, Teal, Milk, Black, Sky Blue, Vaseline, Vaseline Irid, Purple Opalescent, Purple Opalescent Irid



**Summit Art Glass Item 1078 Hobstar (Westmoreland Mold)**

**Sold to Rosso in 2006**

**Reference:** H&J 3127      **Size:** 1 3/4" Dia, 1 " High

**Remarks:** (Reference indicates cut but identical pattern)

**Colors:** Cobalt, Cobalt Irid, Red, Red Irid, Milk, Sky Blue, Amethyst, Amethyst Irid, Aqua Opal, Alexandrite, Black, Plum Opal, Apricot, Apricot Irid, Rubina, Vaseline, Vaseline Opal, Vaseline Irid. Black



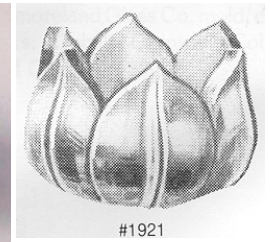
**Summit Art Glass Item 1921 Lotus Salt (Westmoreland Mold)**

**Sold to Rosso in 2006**

**Reference:** H&J 522      **Size:** 1 3/4" Dia, 1 1/4" High

**Remarks:**

**Colors:** Cobalt, Cobalt Irid, Sky Blue, Vaseline Opal, Vaseline, Vaseline Irid, Evergreen, Amberina, Morning Glory, Apple Green, Milk, Blue Milk, Red, Red Irid, Chocolate, Chocolate Irid, Amethyst, Amethyst Irid, Aqua Opal, Black, Gold Slag, Blu Slag, Amethyst Slag, blue/Orange Slag, SmokeBlue, Smoke Irid, Rubina, Plum Opal, Evergreen, Green, Apricot, Apricot Irid, Malachite, Malachite Irid, Teal, Med Blue, Med Blue Irid, Sea Mist, Sea Mist Irid, Dark Amethyst, Dark Amethyst Irid, Purple Opalescent, Purple Opalescent Irid, Jadite



**Summit Art Glass Item RL-1 Rose Lattice Salt (Reworked Imperial Mold)**

**Sold to Rosso in 2006**

**Reference:** None      **Size:** 2" Dia, 1 1/8" High

**Remarks:** Made from an original Imperial mold like item 300 Imperial mold.

**Colors:** Cobalt, Cobalt Irid, Chocolate, Chocolate Irid, Plum Opal, Red, Red Irid, Amethyst, Amethyst Irid, Milk, Bittersweet, Bittersweet Irid, Princess Purple, Princess Purple Irid, Purple Milk, Med Blue, Med Blue Irid, Vaseline, Vaseline Irid, Dark Amethyst, Dark Amethyst Irid, Purple Opales-



**Summit Art Glass Item OU-1 I.O.U. Salt (Westmoreland {Duncan}Mold)**

**Sold to Rosso in 2006**

**Reference:** H&J 2699      **Size:** 2 1/4" Long, 1 1/2" Wide, 1" High

**Remarks:**

**Colors:** Cobalt, Sky Blue, Red, Med Blue, Med Blue Irid, Green Milk, Green Milk Irid, Sea Mist, Sea Mist Irid, Apple Green



**Summit Art Glass Item RS1 Rose Salt (Al Botson Mold)**

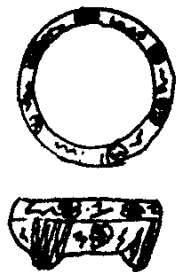
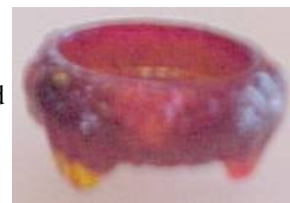
**Mold returned to Botson heirs.**

**Reference:**      **Size:** 1 5/8" Dia, 3/4" High

**Remarks:** Original Al Botson Mold on loan to Summit. Mold picked up by heirs and current location unknown. This has been found in Cobalt, Electric Blue & Crown Tuscan with Al Botson Mark.

**Colors:** Cobalt, Red, Red Irid

Botson Mark



**Summit Art Glass Item CS-1 Covered Chick Salt (Original Summit Mold)**

**Sold to Kim George (Kim's Art Glass) in 2006**

**Reference:** None      **Size:** 2 1/2" Long, 2 1/8" Wide, 2 1/4" High



**Remarks:** Marked with V in circle on early production.

**Colors:** Cobalt, Amberina, Morning Glory, Apple Green, Rubina, Chocolate, Chocolate Irid, Shell, Mulberry, First Frost, Amethyst, Amethyst Irid, Crystal, Crystal Irid, Azurite, Milk, Milk Irid, Green Frost, Turquoise, Black, Red, Geraldine, Geraldine Irid, Malachite, Malachite Irid, Vaseline, Vaseline Irid, Amethyst Slag, Apricot, Vaseline Blue, Carmel Slag, Cobalt Irid, Cobalt Satin, Orange Irid, Red Irid, Sky Blue, Aqua, Aqua Irid, Aqua Opal, Aqua Opal Irid, Plum Opal, Plum Opal Irid, Teal, French Opal, Delft Blue, Green Frost, Green Milk, Green Milk Irid, Sea Mist, Sea Mist Irid, Purple Opalescent, Purple Opalescent Irid, Jadite

**Summit Art Glass Item 548 Covered Rabbit Salt (Original Summit Mold)**

**Sold to Kim George (Kim's Art Glass) in 2006**

**Reference:** H&J 1002      **Size:** 2 1/2" Long, 2 1/8" Wide, 2 1/4" High



**Remarks:** Marked with V in circle on bottom in early production

**Colors:** Cobalt, Amberina, Morning Glory, Apple Green, Rubina, Chocolate, Chocolate Irid, Shell, Mulberry, First Frost, Amethyst, Amethyst Irid, Crystal, Crystal Irid, Milk, Green Frost, Turquoise, Black, Red, Geraldine, Geraldine Irid, Blue Milk, Vaseline, Vaseline Irid, Jadite

**Summit Art Glass Item MT-1 2 Handle MtVernon (Cambridge Mold MV 104)**

**Sold to Rosso in 2006**

**Reference:** H&J 821      **Size:** 4 3/8" Long, 2" Wide, 2 3/8" High



**Remarks:**

**Colors:** Vaseline, Vaseline Irid, Amethyst, Amethyst Irid, Rubina, Sahara Gold, Amberina, Indigo, Cobalt, Morning Glory, Med Blue, Med Blue Irid, Sea Mist Blue, Sea Mist Green, Sea Mist Transparent Green, Sea Mist Irid, Dark Amethyst, Dark Amethyst Irid, Jadite

**Summit Art Glass Item 555F-1 English Hobnail Footed Salt (Westmoreland Mold)**

**Sold to Rosso in 2006**

**Reference:** H&J 865      **Size:** 3 1/8" Long, 1 3/4" Wide, 2 1/8" High



**Remarks:** Marked with Westmoreland Wover G mark on bottom.

**Colors:** Cobalt, Amberina, Milk, Sky Blue, Milk, Vaseline, Vaseline Irid, Med Blue, Med Blue Irid, Sea Mist, Purple Opalescent, Purple Opalescent Irid, Jadite, Rubina

**Summit Art Glass Item DB-1 Daisy & Button Mini shoe (Joe StClair Mold)**

**Sold to Rosso in 2006**

**Reference:** H&J 851      **Size:** 3 1/4" Long, 1" Wide, 1 1/2" High



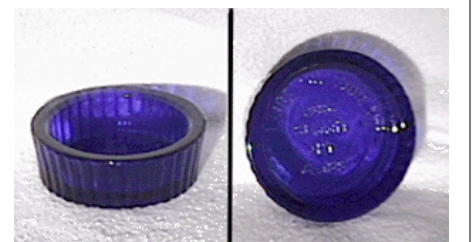
**Remarks:** Found with both smooth and stippled inside bottom. Current production stippled.

**Colors:** Cobalt, Cobalt Irid, Milk, Carmel Slag, Red, Red Irid, Malachite, Malachite Irid, Sky Blue, Rubina, Amethyst, Amethyst Irid, Vaseline, Vaseline Irid

**Summit Art Glass Item Salt Dip (Original Summit Mold)**

**Sold to Rosso in 2006**

**Reference:** None      **Size:** 2 1/4" Dia, 1" High



**Remarks:** I Took a Tour at Summit Art Glass 1986 marked inside.

**Colors:** Cobalt

**Summit Art Glass Item SS-214 Sea Shell Salt (Cambridge Mold, #34)**

**Sold to Cambridge Collectors in 2006**

Reference: H&J 1235      Size: 2 3/4" Dia, 1 5/8" High

Remarks: Dot inside some as mark

Colors: Cobalt, Blue Milk, Sky Blue, Red, Milk, Morning Glory, Sahara Gold, Black, Azurite, Vaseline



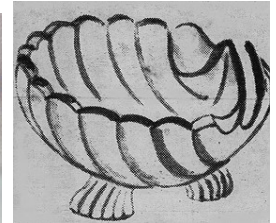
**Summit Art Glass Item SS-213 3 Toed Shell Card Holder (Cambridge Mold, #213)**

**Sold to Cambridge Collectors in 2006**

Reference: H&J 1237      Size: 2 3/4" Dia, 1 5/8" High

Remarks: Dot inside some as mark

Colors: Cobalt, Morning Glory, Sara Gold, Emerald Green, Emerald Green Irid, Lt Blue, Lt Blue Irid.



**Summit Art Glass Item 543 Lion Master Salt (Gillander Mold ??)**

**Sold to Rosso in 2006**

Reference: H&J 3829      Size: 2 7/8" Dia, 1 3/4" High

Remarks: Not made since 1984 until 1999 when a group contracted for a one year exclusive use of the Mold and had it made in Vaseline.

Colors: Blue Green, Crystal, Cobalt, Vaseline, Pink, Pink Irid, Apple Green, Sea Mist, Rose Amber



**L.G. Wright Item: 67-7 Wildflower Rectangular Salt Dip (Botson Mold)**  
(Mold purchased by unidentified buyer at Wright Auction and currently at Summit and being made for new owner) **Mold returned to owner in California**  
Reference: H&J 864      Size: 3 3/8" Long, 2 1/2" Wide, 7/8" High

Remarks: Currently being made by Summit for New Owner.

Colors made at Summit: Vaseline, Vaseline Iridized, Med Blue, Med Blue Irid, Sea Mist, Jadite

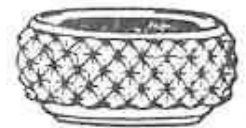


**Summit Art Glass Item CC-1 Cape Cod Salt**

**Sold to Rosso in 2006**

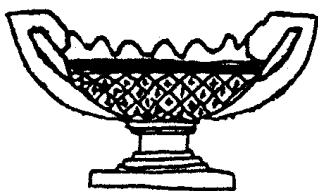
Remarks: Limited production due mold problem

Colors: Cobalt, Vaseline



**Summit Art Glass (Cambridge Mold #103) Stratford**

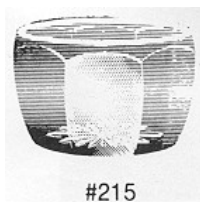
Remarks: Summit has the ring and extension for this salt but it is not usable without complete rework. **Sold to Rosso in 2006**



**Summit Art Glass Item Item 215 (Westmoreland Mold)**

**Sold to Rosso in 2006**

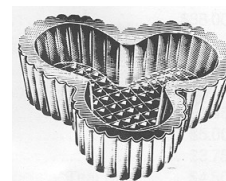
Remarks: Never produced due mold problem



**Summit Art Glass Item EU-3 Three Loop Salt Dip (Westmoreland Mold)**

**Sold to Bowman in 2006**

Remarks: Never produced due mold problem



**Summit Art Glass Item 1107 1" Salt Dip (Westmoreland Mold)**

Remarks: This unknown mold never used due problems. They can not remember what it looks like, but if they run across it they will let me know.

**Reportedly reproduced by L.G. Wright.**

**Sold to Bowman in 2006**

**Reference:** H&J 934

**Size:** 3 1/2" Long, 1 7/8" Wide, 1 1/2" High

**Remarks:** If this item was ever sold by L.G. Wright it was in the early years and was purchased from another maker who owned the mold. In conversations with L.G. Wright personnel they did not have the mold for this item and could not even remember ever having it for sale.. This mold surfaced in 2005 and was obtained by Summit Art Glass in May 2005. Summit only made it one time in an exclusive limited production for Kim's Art Glass in Amethyst Iridized.

**Old Colors:** Amber, Lt Blue, Crystal, Green, Yellow, Vaseline

**Current update:** Still looking for more confirmation, but indications are the mold was at Brooke Glass Co, Wellsburg, WV.

This could be a follow-on to the Riverside Glass Company (1897-1907)(On October 23, 1899, Riverside joined the National Glass Company, a syndicate established in 1899 to meet the competition of the increased flow of glass imports.) (See this is not new). In 1907 Riverside closed and their molds were sold to the Cambridge Glass Company at Cambridge, Ohio. In 1911 the furnaces and buildings were sold to the Rithner family and Ellery Worthen, who had established the Crescent Glass Company in Wellsburg in 1908. When Mr. Worthen was killed in an accident in 1920, the Rithner family bought his interest in the company from his heirs. The first location was above Twenty-ninth and Yankee streets. Later the company moved to the former Riverside Glass site at Sixth and Yankee and was still operating at this location in 1975. (Date of information). Have been told that the Rithner family was also Brooke Glass, which I am still trying to confirm. Trying to find out if this was a mold made for Crescent Glass (Brooke Glass) or left over from Riverside. It also could have been a mold purchased from one of the many glass factories in the area, (Over 40 in Brooke County, WV alone that have closed over the years).

