



# Open Salts

## Degenhart Crystal Art Glass



John Degenhart started Degenhart Crystal Art Glass in 1947 producing many glass items with the first Salt being the Star & Dewdrop Master in 1952. After John's death in 1964 his wife Elizabeth took over the business and ran it until her death in 1978. The business and equipment were then sold to Bernard C. Boyd and his Son Bernard F. Boyd, thus started Boyd's Crystal Art Glass. The Boyds continue the tradition of quality hand pressed glass at the same location in Cambridge, Ohio.

Collectors should refer to "Degenhart Glass & Paperweights" by Gene Florence for assistance in determination of colors, and other item produced by Degenhart Crystal Art Glass..

(This information updated as of October 30, 2010 with information available at that time)

**Item: Chick Salt (Original Degenhart Mold)**

Mold acquired by Boyd

Reference: H&J 968

Size: 2 1/2" Long, 2" Wide, 2" High

**Remarks:** Introduced by Degenhart in 1966 and marked with D in Heart starting in 1972. Continued in production by Boyd's with their marks. This type mold has been produced by many prior to and since, however it should be noted that the chick is looking straight ahead and not turned like similar pieces by other manufacturers.

Colors: See attached list



**Item: Bird Salt ( Also called Bird with Cherry or Bird with Seed) (Original Degenhart Mold copying an old design)**

Mold acquired by Boyd

Reference: H&J 998

Size: 3" Long, 1 7/8" Wide, 1 3/4" High

**Remarks:** Introduced by Degenhart in 1958 and marked with D in Heart starting in 1972. Continued in production by Boyd's with their marks as indicated by 5 year periods. This type mold has been produced prior to and since. Produced by Kanawha Glass and current imports. Kanawha has a flatter back to head and larger beak that goes up over the seed and also has a wobble like to breast. Some imports are poor quality, however I have seen some that are nice.

Colors: See attached list



**Item: Star & Dewdrop Salt (??? Old Mold or New Degenhart Mold copying an old design)**

Mold acquired by Boyd

Reference: H&J 925

Size: 3 3/16" Dia, 1 3/8" High

**Remarks:** Introduced by Degenhart in 1952 (Reproduction of an 1875 salt in dewdrop with Star pattern attributed to Campbell, Jones and Company of Pittsburg). Marked with D in Heart starting in 1972. Continued in production by Boyd's with their marks as indicated by 5 year periods. Other salts in this pattern are known to exist but are 3 1/2" diameter.

Colors: See attached list



**Item: Pottie Salt (Origin of mold unknown)**

Mold acquired by Boyd

Reference: H&J 581

Size: 2 1/4" Dia, 2 7/8" Across Handle 1 1/2" High

**Remarks:** Introduced by Degenhart in 1971 (Origin of mold unknown). Marked with D in Heart starting in 1972. Continued in production by Boyd's with their marks as indicated by 5 year periods.



For more information on Open Salts, go to my Web Site: [www.opensalts.net](http://www.opensalts.net)

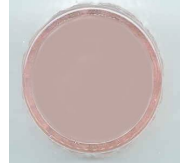
**Item: Daisy & Button Salt (Original Degenhart Mold)**

**This mold was retired to the Degenhart Museum**

**Reference:** H&J 905

**Size:** 1 7/8" Dia, 1 1/2" High

**Remarks:** Introduced by Degenhart in 1970 and marked with D in Heart starting in 1972. This salt was designed by Elizabeth Degenhart and was designed with two bottom designs, one Daisy & Button and the other plain. Both types were produced by Degenhart. This mold was retired to the Degenhart Museum and is not made by Boyd's. This was also made by L.G. Wright with the Daisy & Button Bottom. The best way to tell the Degenhart Daisy & Button is that the centers of the 4 Daisies around the outside are 2mm from the bottom edge and you can see part of the daisy between the daisy center and the edge.



**Colors:** Degenhart (See attached list).

**Item: Miniature Slipper (Original Degenhart Mold copying an old design)**

**This mold was retired to the Degenhart Museum**

**Reference:** Smith 104-5-1

**Size:** 3 1/2" Long, 1 1/8" Wide, 1 3/4" High

**Remarks:** Introduced by Degenhart in 1965 and marked with D in Heart in 1972. Variation of an 1880's Fine Cut Pattern Slipper, exact origin unknown. The original Degenhart mold had a full sole with tread marks as indicated on the Amber picture. In about 1966 the mold was modified with a beading around the top opening and the sole was hollowed out making it easier to work as indicated in the green one pictured. This mold was retired to the Degenhart Museum and is not made by Boyd's. This item was included as many salt collectors have mini shoes in their collections.



**Colors:** Degenhart (See attached list)

**Item: Bridge Set (Origin of Mold Unknown)**

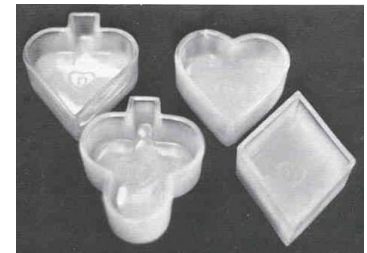
**Mold acquired by Boyd. The Diamond used as solid paper weight, others never used.**

**Reference:** None

**Size:** Diamond 3 1/8" Long, 2 3/8" wide, 1 1/8" High

**Remarks:** Introduced (Unknown) Marked D in Heart 1973. Size would make these prime candidates for salt collectors.

**Colors:** Degenhart: Blue Milk, Vaseline, Amberina and Milk



**Item: Bridge Set** Degenhart Museum has had a small version made of the above Bridge set

**Reference:** None

**Size:** 1 3/4" X 2" Average size, 1/2" High

**Remarks:** This item was never made by Degenhart, but made for the Museum Gift Shop. They had it marked with a D in heart with line under the heart to indicate it was not an original Degenhart.

**Colors:** Red, Green



## Degenhart Colors

Chick Salt	Bird Salt	Fog	Daisy & Button	Star and Dew Drop	Shoe Without Sole	
Amber	Amber	Forest Green	Amber	Amber Amber Dark Amberina Amethyst Aqua Bluebell Blue & White Slag Burnt Persimmon Carnival Amethyst Cobalt Crown Tuscan Crystal Crystal Frosted Custard Elizabeths Lime - Ice Emerald Green Forest Green Heatherbloom Henry's Blue Ivory Gold Jade Lavender Marble-Slag Lemon Custard Lemon Opal Milk Blue Milk White Opalescent Peach Blo Persimmon Pink Rose Marie Sapphire Sunset Tomato Vaseline Rose Marie Ruby Sapphire Snow White Teal Tomato Topaz Vaseline	Amber	Amber
Amber Dark	Amber Dark	Green	Amber Dark		Amber, Dark	
Amberina	Amber, Dichromatic	Gun Metal	Amberina		Amberina	
Amethyst	Amber, Dichromatic-	Heatherbloom	Amethyst		Amethyst	
Apple Green	Lt	Heliotrope, Dark	Apple Green		Aqua	
Aqua	Amberina	Heliotrope, Light	Bittersweet		Bluebell	
Bittersweet	Amethyst	Holly Green	Bluebell		Bluebell	
Bloody Mary	Angel Blue	Indigo	Cambridge Pink		Carnival, Cobalt	
Bluebell	Apple Green	Ivory	Cobalt		Carmel	
Blue Green	April Green	Ivorene	Crown Tuscan		Cobalt	
Cambridge Pink	Aprill Green	Jade	Crystal		Crown Tuscan	
Carmel	Aqua	Lavender Blue	Custard		Crystal	
Carnival, Cobalt	Autumn	Lavender Green - Slag	Delft Blue		Crystal Frosted	
Carnival, Green	Baby Blue	Lavender Marble	Dichromatic		Custard	
Carnival, Pink	Baby Green	Lemon Chiffon	Elizabeths Blue		Elizabeths Lime - Ice	
Champagne	Baby Green Slag	Lemon Custard	Emerald Green		Emerald Green	
Cobalt	Bernard Boyd's - Ebony	Lemon Opal	Forest Green		Gorest Green	
Concord Grape	Bittersweet	Milk Blue	Gold		Gray slag	
Crown Tuscan	Bloody Mary	Milk Blue Opal	Heliotrope		Heliotrope	
Crystal	Bluebell	Milk White	Lime Ice		Honey Amber	
Custard	Blue Fire	Mint or Lime - Custard	Milk Blue		Lime Ice	
Custard Slag	Blue Fire Variant	Mint	Milk White		Milk Blue	
Dichromatic	Blue Green	Old Lavender	Opalescent		Mint Green	
Elizabeths - Lime Ice	Blue Jay	Olive Green	Peach Blo		Opalescent	
Emerald Green	Blue Marble Slag	Opal	Persimmon		Peach, clear	
Forest Green, Dark	Blue & White	Opalescent	Pink		Persimmon	
Forest Green, Light	Blue & White Slag	Orchid	Red		Rose Marie	
Gold	Brown	Peach, clear	Rose Marie		Sapphire	
Green	Burnt Amber	Peach, opaque	Sapphire		Vaseline	
Gray Slag	Buttercup	Peach, Blo	Sunset			
Heliotrope	Cambridge Pink	Pearl Gray	Tomato			
Honey	Canary	Periwinkle	Vaseline			
Honey Amber	Carmel, Dark	Persimmon				
Jabe's Amber	Carmel Light	Persimmon, Dark				
Just Green	Carmel Custard	Pigeon Blood	<b>Pottie Salt</b>			
Lemon Custard	Carmel Custard Slag	Pink	Amber		Amber, Dark	
Milk Blue	Carmel Slag, Dark	Pink, Light	Amberina		Amethyst	
Milk White	Carmel Slag, Light	Pink Lady	Amethyst		Amethyst, Dark	
Mint or Lime - Custard	Carnival, Amethyst	Powder Blue Slag	Bluebell		Champagne	
Mint Green	Champagne	Red	Blue & White Slag		Cobalt	
Opalescent	Cobalt	Rose Marie, Dark	Carnival, Cobalt		Milk Blue	
Peach Blo	Cobalt #1	Rose Marie, Light	Chocolate Cream Slag		Milk White	
Persimmon	Cobalt #2	Rubina	Cobalt		Opalescent	
Pine Green	Cobalt #3	Sapphire	Crown Tuscan		Peach Blo	
Pink	Crown Tuscan	Sparrow	Crystal		Persimmon	
Pistachio	Crystal, Frosted	Spring Green	Fog		Vaseline	
Red	Custard	Taffeta	Green			
Rose Marie	Custard Slag	Teal	Milk Blue			
Ruby	Custard Slag, Dark	Toffee Slag	Milk White			
Sapphire	Custard Slag, Light	Tomato	Nile Green			
Taffeta	Concord Grape	Vaseline	Opalescent			
Vaseline	Daffodil	Violet #2	Peach, clear			
White	Daffodil w/Green		Rose Marie			
	Dichromatic		Sapphire			
	Elizabeth's Blue		Sunset			
	Elizabeth's Lime Ice		Vaseline			
	Fawn					

### Shoe With Sole

For assistance in determining Degenhart colors see "Degenhart Glass and Paperweights" a collectors guide to colors and values by Gene Florence. This is available at the Degenhart Paperweight and Glass Museum, Inc. P.O. Box 186 Cambridge, Ohio 43725