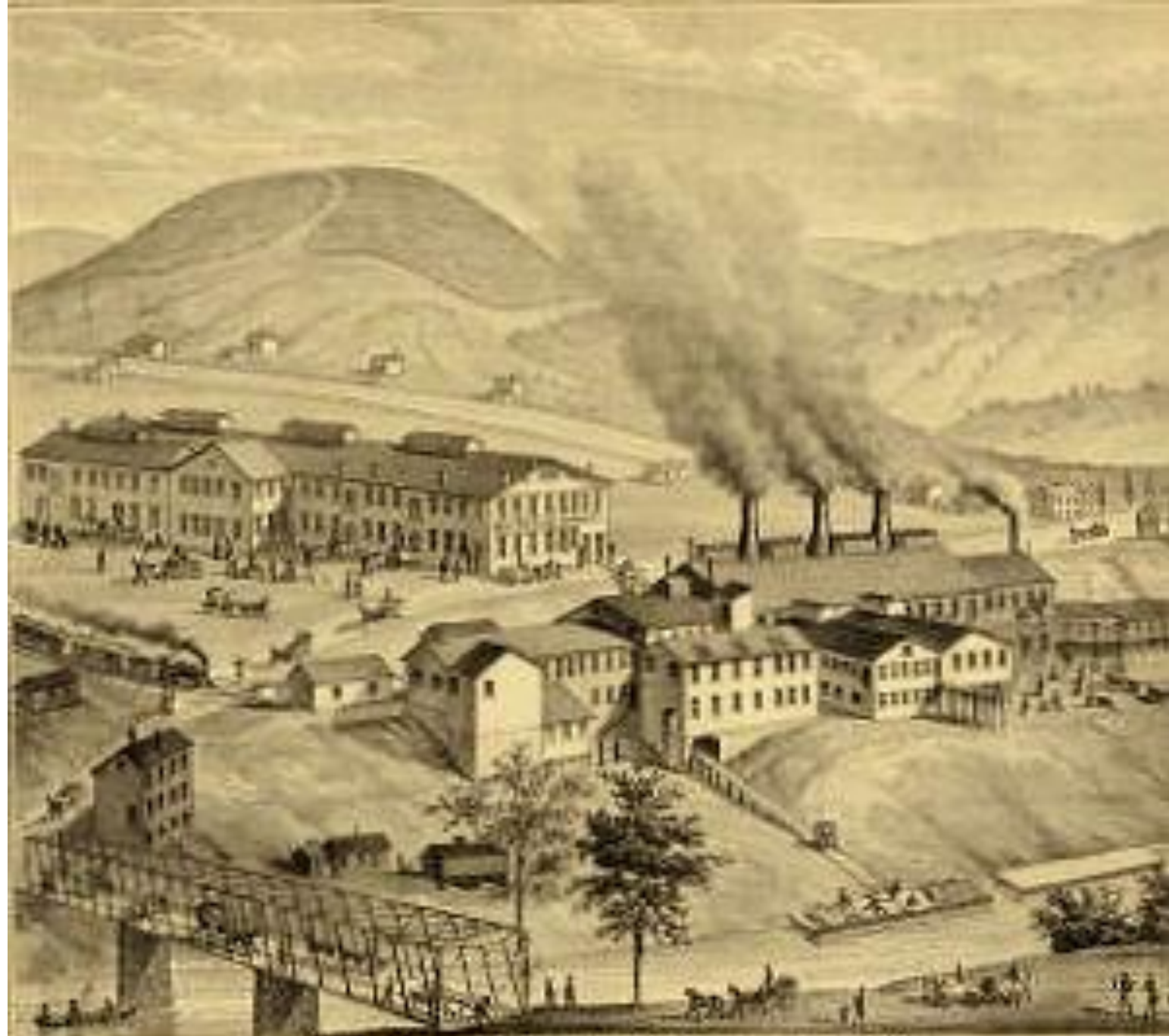


WELCOME  
TO THE  
OPEN SALTS  
OF  
CENTRAL GLASS COMPANY  
1863 - 1893



WORKS OF CENTRAL GLASS COMPANY  
WHEELING, WEST VA.

Central Glass was organized and composed of dissatisfied workers from the Hobbs-Barnes Factory in 1863. with \$5,000.00 they formed Oesterling, Henderson and Co. and after having a difficult time, in 1866 bought additional ground and in 1867 obtained a new charter and a capital of \$80,000.00 the firm became the Central Glass Co., manufacturers of tableware, bar goods, and lamps.

In 1891 they joined U.S. Glass, as Factory "O" ("O" for Osterling) of the United States Glass Company merging with seventeen other firms. The new owners operated the factory only a short time, as the Union men would not agree to an open shop and the glassworks was closed down from 1893 to 1895. (Molds and machinery was moved out.)

In 1896 sold to a Wheeling Stock Co which re-established it as the Central Glass Works.

The factory burned in 1901, closed in 1902 due foreign competition reopened in 1904 and stayed in business until 1939 when they closed and sold their molds to the Imperial Glass Co.

# SALTS.



SCALE  $\frac{1}{2}$

For Annual List of Goods, Philadelphia, Pa.

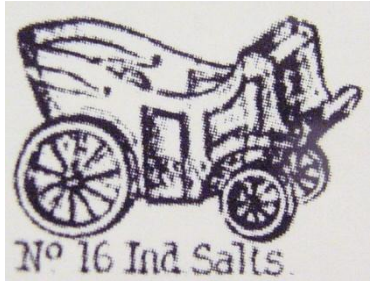


SALTS.

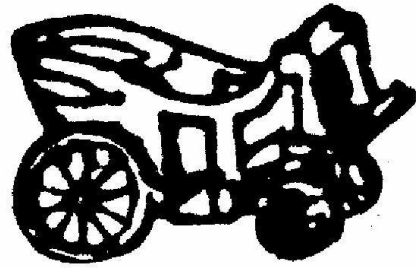


Wide assortment of salts shown in Central Glass Co. Catalog Circa 1880

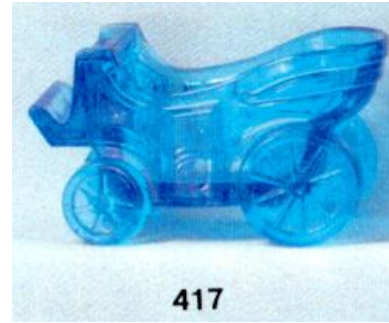
# #16 Carriage Individual Salt, Circa 1885



Catalog Picture

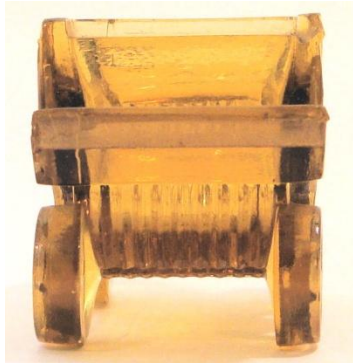


Berg Salty Comments



Heacock & Johnson

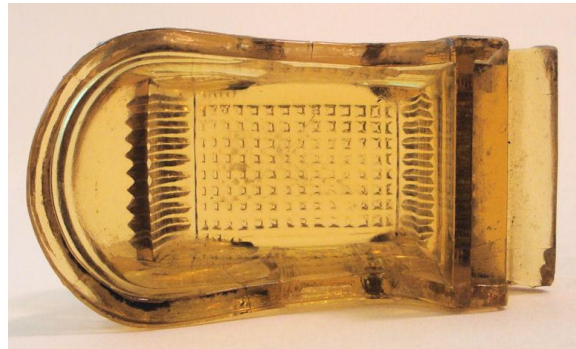
Individual  
2 7/8" Long  
1-1/2" Wide  
1-5/8" High



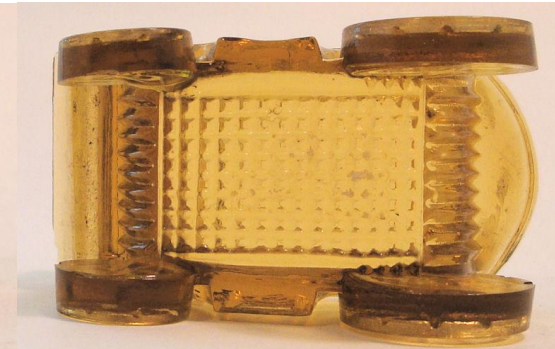
Front



Back

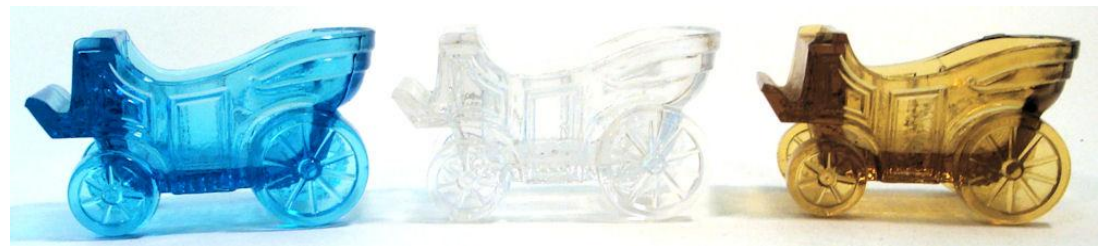


Top



Bottom

- Crystal, Amber, Blue
- Unmarked.
- H&J 417



# # 140 renumber #192 Rose Circa 1870



Table Pedestal  
2 3/4" Dia Top  
2" Across Base  
2 3/8" High

Catalog Picture Berg Salty Comments Heacock & Johnson



Side



Top



Bottom

Central called this one Rose but commonly called Cabbage Rose

- Crystal
- Unmarked.
- H&J 3529





177 Individual  
**177 DIAMOND**  
Individual



178.  
**178 BALTIMORE**  
Individual



179 Individual  
**179 SQUARE**  
Individual



180 Individual Salt  
**180 OCTAGON**  
Individual



181  
**181 OAK LEAF**  
Oval



182  
**182 Oval**



183  
**183 FLORENCE**  
Oval



184.  
**184 CINCINNATI**  
Oval



185.  
**185 SPLIT**  
Oval



186.  
**186 BUFFALO**  
Oval



187  
**187 DOBSON**  
Oval



188.  
**188 JANUS**  
Footed



189.  
**189 CURTAIN**  
Footed



190  
**190 FROSTED**  
Footed



191  
**191 OAK LEAF**  
Footed



192  
**192 ROSE**  
Footed



193  
**193 ARCH**



194  
**194 BALTIMORE**  
Master



195.  
**195 OCTAGON FT'D**  
Master



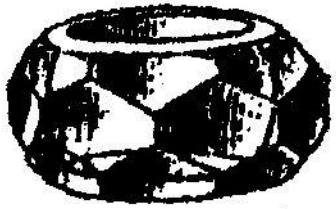
196.  
**196 ALBANY**



197.  
**197 DIAMOND**  
Master

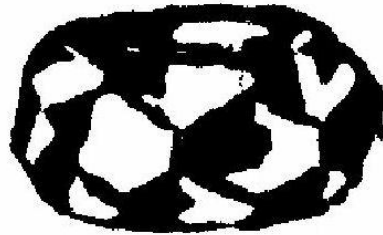
### 177-197 SALTS

# #177 Diamond, Circa 1876



177 Individual

Catalog Picture



Berg Salty Comments

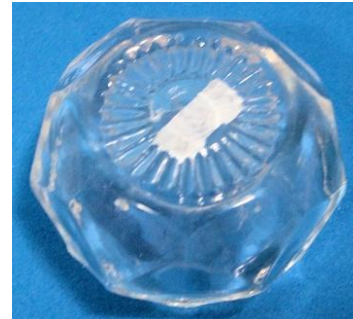
Individual  
1" Dia Top Opening  
1-3/4" Across Center  
7/8" High  
Estimated



Side



Top



Bottom



- Crystal
- Unmarked.

This pattern made by many other companies. We do not know how to distinguish Central

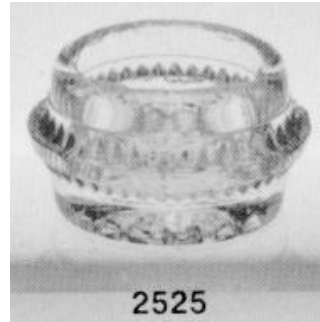
# #178 Baltimore, Circa 1876



Catalog Picture



Berg Salty Comments



Heacock & Johnson

Individual  
1 3/16" Dia Top Opening  
2" Across Center  
1" High



Side



Top

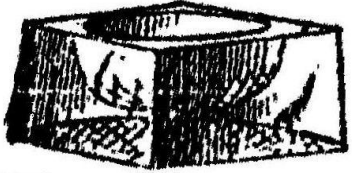


Bottom

- Crystal
- Unmarked
- H&J 2525

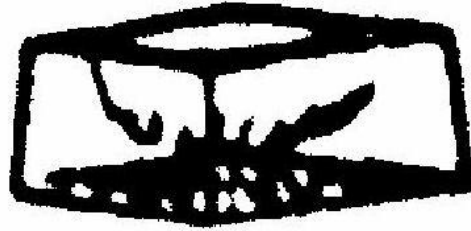


# #179 Square, Circa 1876



179 Individual

Catalog Picture



Berg Salty Comments

Side

Top

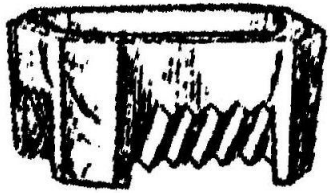
Bottom

- Crystal
- Unmarked.

Individual  
2" Dia Top  
1-1/4" Across Base  
1-3/4" High  
Estimated

This pattern made by many other companies. We do not know how to distinguish Central

# #180 Octagon Footed, Circa 1876



180 Individual Salt

Catalog Picture



Berg Salty Comments



Side



Top



Bottom

- Crystal
- Unmarked.

Individual  
2" Long  
1 7/16" Wide  
15/16" High  
Estimated

This pattern made by many other companies. We do not know how to distinguish Central

# #181 Oak Leaf (Oval), Circa 1876



181

Catalog Picture



Berg Salty Comments

Side

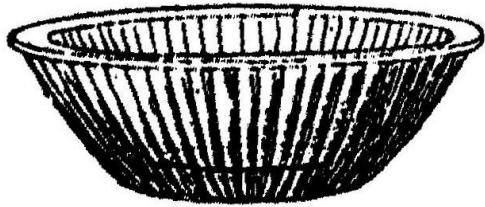
Top

Bottom

- Crystal
- Unmarked
- H&J 2725

Individual ??????  
2" Dia Top  
1-1/4" Across Base  
1-3/4" High

# #182 Fluted (Oval), Circa 1876



182

Catalog Picture



Berg Salty Comments

Table  
3 3/8" Long  
2 5/16" Wide  
1 1/8" High



Side



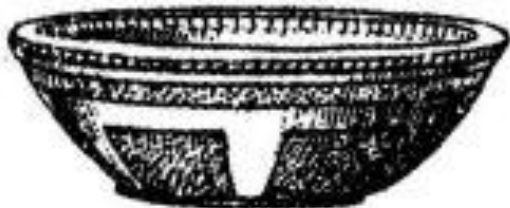
Top



Bottom

- Crystal
- Unmarked.

# #183 Florence, Circa 1876



183

Catalog Picture



Berg Salty Comments

Side

Top

Bottom

- Crystal
- Unmarked.

Individual ??????  
2" Dia Top  
1-1/4" Across Base  
1-3/4" High

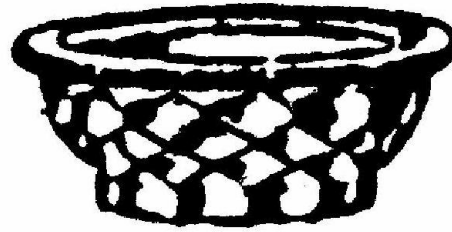


# #184 Cincinnati, Circa 1876



184.

Catalog Picture



Berg Salty Comments

Side

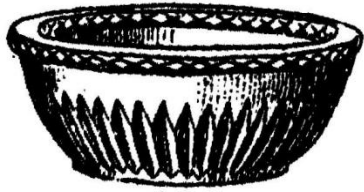
Top

Bottom

- Crystal
- Unmarked.

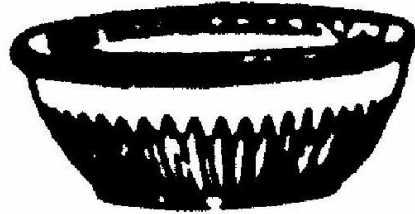
Individual ??????  
2" Dia Top  
1-1/4" Across Base  
1-3/4" High

# #185 Split, Circa 1876



185.

Catalog Picture



Berg Salty Comments

Table  
3" Dia Top  
1-7/8" Across Base  
1-1/4" High



Side



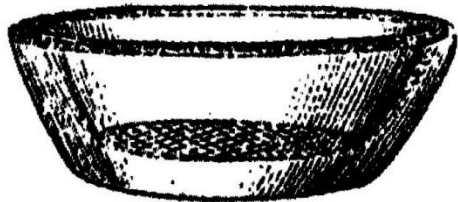
Top



Bottom

- Crystal
- Unmarked.

# #186 Buffalo, Circa 1876



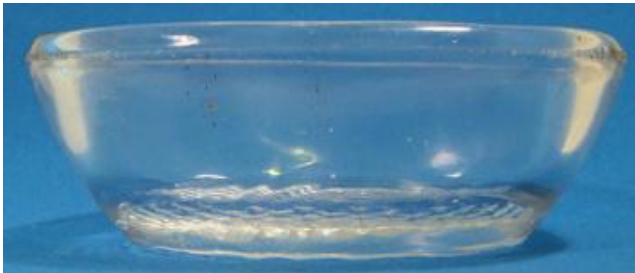
186.

Catalog Picture

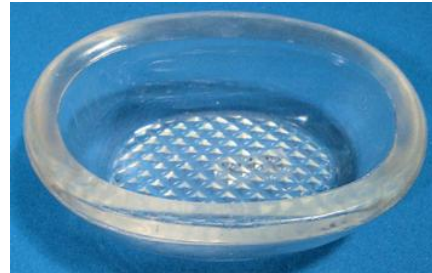


Berg Salty Comments

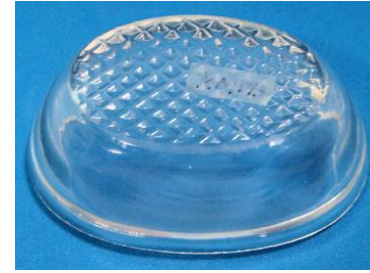
Table  
3 3/8" Long  
2 5/16" Wide  
1 1/8" High  
Estimated



Side



Top



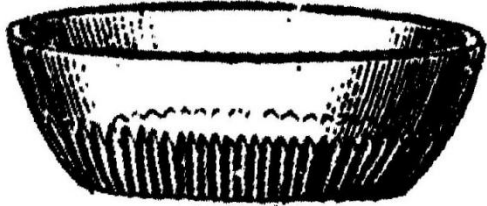
Bottom



- Crystal
- Unmarked.

This pattern made by many other companies. We do not know how to distinguish Central

# #187 Dobson, Circa 1876



187

Catalog Picture



Berg Salty Comments

Side

Top

Bottom

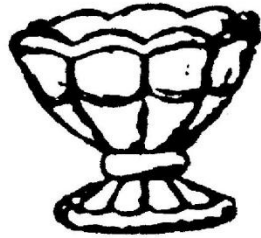
- Crystal
- Unmarked

Individual ??????  
2" Dia Top  
1-1/4" Across Base  
1-3/4" High

# #188 Janus, Circa 1876



188.



Catalog Picture

Berg Salty Comments

Table  
2 11/16" Dia Top  
1 15/16" Across Base  
2" High



Side



Top



Bottom

- Crystal
- Unmarked

# #189 Curtain aka Stippled Swag, Circa 1876



189.



Table Pedestal  
3 1/8" Dia Top  
2" Across Base  
2 1/4" High

Catalog Picture

Berg Salty Comments

Heacock & Johnson



Side



Top



Bottom

- Crystal
- Unmarked
- H&J 3845

# #190 Frosted, Circa 1876



Catalog Picture    Berg Salty Comments

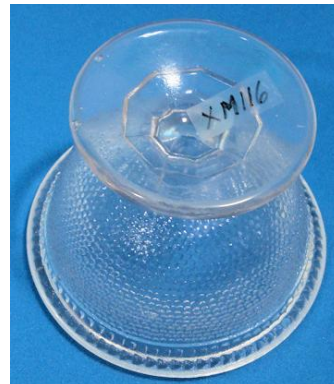
Table Pedestal  
3 1/8" Dia Top  
2" Across Base  
2 1/4" High



Side



Top



Bottom

- Crystal
- Unmarked.

# #191 Oak Leaf, Circa 1876



191

Catalog Picture



Berg Salty Comments



Smith

Table Pedestal  
3 1/8" Dia Top  
2" Across Base  
2 5/16" High



Side



Top



Bottom

- Crystal
- Unmarked.
- Smith 346-2-1

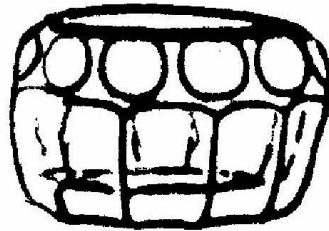


# #193 Arch, Circa 1876



193

Catalog Picture



Berg Salty Comments



Coddington

Table  
2" Dia Top Opening  
2 7/8" Across Center  
1 11/16" High



Side



Top



Bottom

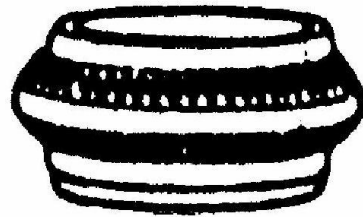
- Crystal
- Unmarked.
- Coddington 46-1-3



# #194 Baltimore, Circa 1876



Catalog Picture



Berg Salty Comments



Heacock & Johnson

Table  
2 7/8" Dia Middle  
2 1/4" Across Base  
1 1/2" High



Side



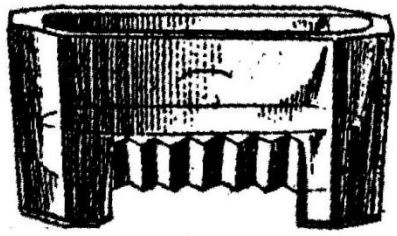
Top



Bottom

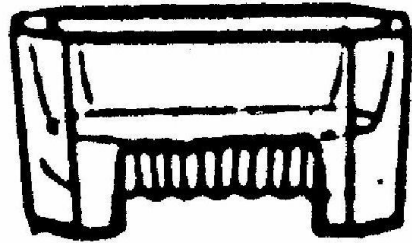
- Crystal
- Unmarked.
- H&J 3687

# #195 Octagon, Circa 1876



195.

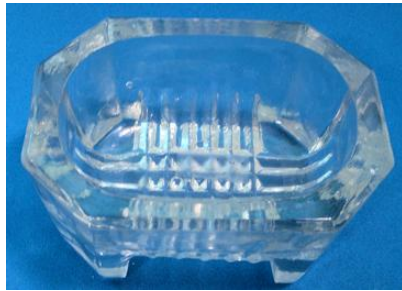
Catalog Picture



Berg Salty Comments



Side



Top



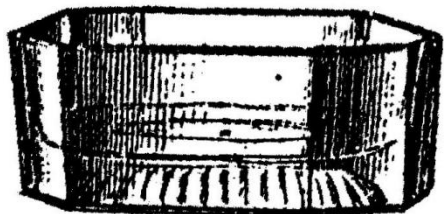
Bottom

- Crystal
- Unmarked.

Table  
3 3/8" Long  
2 5/8" Wide  
1 11/16" High  
Estimated

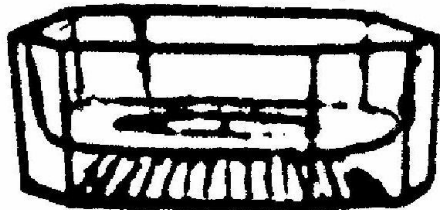
This pattern made by many other companies. We do not know how to distinguish Central

# #196 Oblong Table, Oval Rope Bottom, Circa 1876



196.

Catalog Picture



Berg Salty Comments



Side



Top



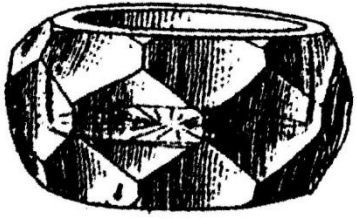
Bottom

- Crystal
- Unmarked.

Table  
3" Long  
2" Wide  
1 3/8" High  
Estimated

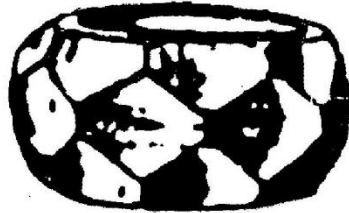
This pattern made by many other companies. We do not know how to distinguish Central

# #197 Diamond in Honeycomb , Circa 1876



197.

Catalog Picture



Berg Salty Comments

Side

Top

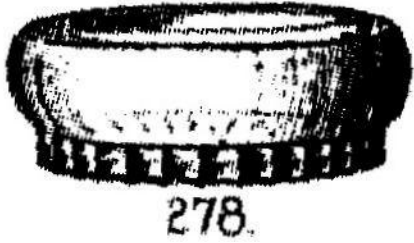
Bottom

- Crystal
- Unmarked.

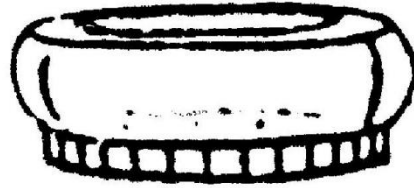
Table  
" Dia Opening  
" Dia Center  
" High  
Estimated

This pattern made by many other companies. We do not know how to distinguish Central

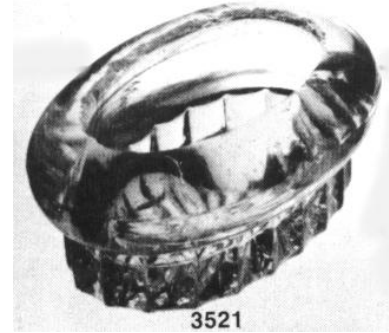
# #278 Notched Bottom, Circa 1876



Catalog Picture



Berg Salty Comments



Heacock & Johnson

Table  
3 15/16" Long  
2 3/4" Wide  
1-1/2" High



Side



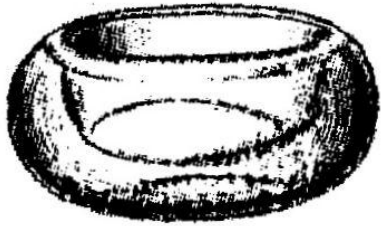
Top



Bottom

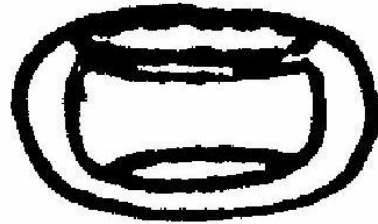
- Crystal
- Unmarked.
- H&J 3521

# #301 Round plain convex, Circa 1876



301

Catalog Picture



Berg Salty Comments

Side

Top

Bottom

- Crystal
- Unmarked.
- Round Plain Bottom

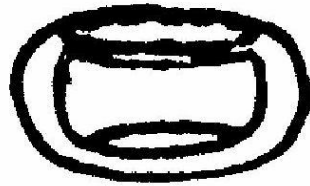
Table  
" Dia Top  
" Across Middle  
" High  
Estimated

This pattern made by many other companies. We do not know how to distinguish Central

# #302 Round plain convex, Circa 1876



302 Individual

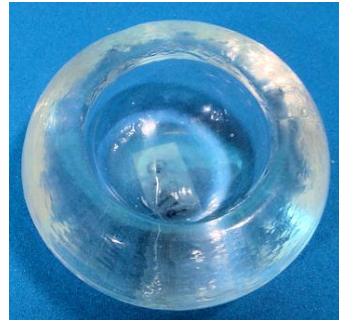


Catalog Picture

Berg Salty Comments



Side



Top



Bottom

- Crystal
- Unmarked
- Round Plain Bottom

Individual  
1 1/8" Dia Opening  
2" Across Middle  
1" High  
Estimated

This pattern made by many other companies. We do not know how to distinguish Central

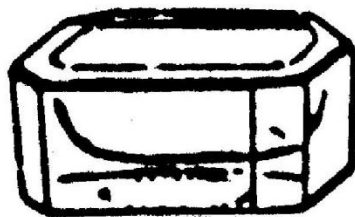


# #321 Shallow octagon shape, Circa 1876



Salt 321.

Catalog Picture



Berg Salty Comments

Side

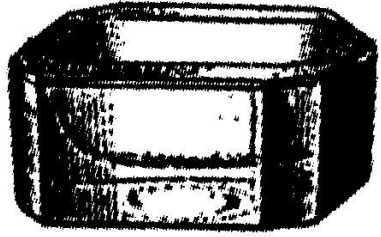
Top

Bottom

- Crystal
- Unmarked.

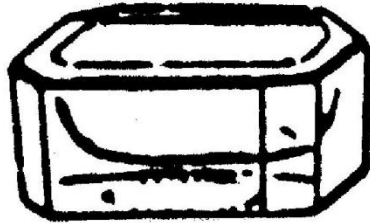
Individual  
" Long  
" Across  
" High

# #401 Octagon with curved bowl, Circa 1876

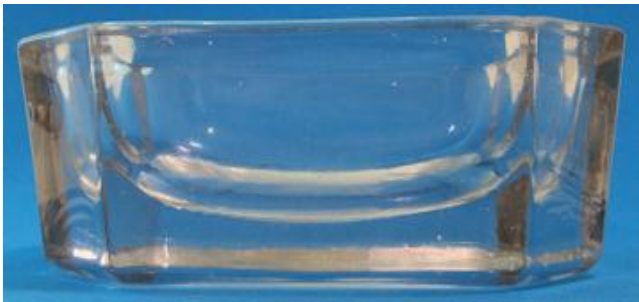


401

Catalog Picture



Berg Salty Comments



Side



Top



Bottom

- Crystal
- Unmarked.

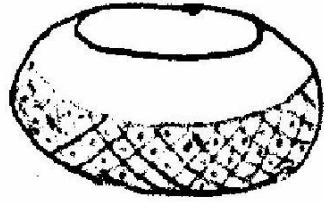
Individual  
3 11/16" Long  
2 1/2" Wide  
1 7/16" High  
Estimated

This pattern made by many other companies. We do not know how to distinguish Central

# #439 Scalloped Diamond point, Individual, Circa 1876



439 Ind Salt



Berg Salty Comments



2526

Heacock & Johnson

Individual  
1 3/8" Dia Top Open  
1 7/8" Across Center  
7/8" High



Side



Top



Bottom

- Crystal
- Unmarked.



# #439 Scalloped Diamond point, Table, Circa 1876

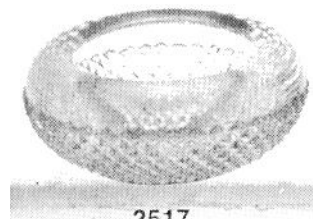


439 Salt.

Catalog Picture



Berg Salty Comments



Heacock & Johnson

Table

2 ¼" Dia Top Open

3 1/4" Across Center

1 3/8" High



Side



Top



Bottom

- Crystal
- Unmarked.

# Looks Like #439 Scalloped Diamond point, Celery



Celery

2 1/4" Dia Top Open

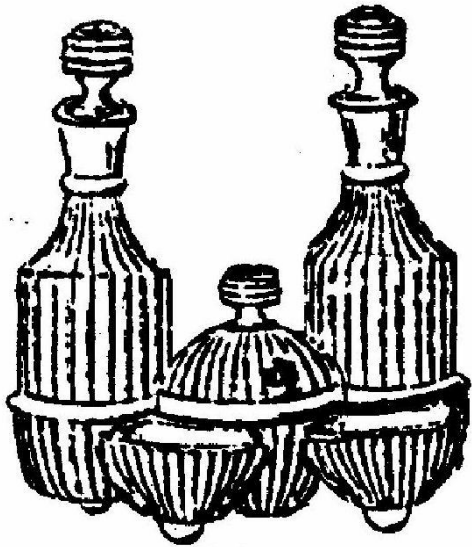
3 1/4" Across Center

1 3/8" High

This is a look alike of Central #439 that would add a Celery to the Diamond Point Pattern. Marked "BELGE" The size more matches the size of the one listed in Heacock and Johnson Number 2517

- Crystal
- Marked "BELGE"

# #545 Caster Set, Circa 1880



Catalog Picture

Side

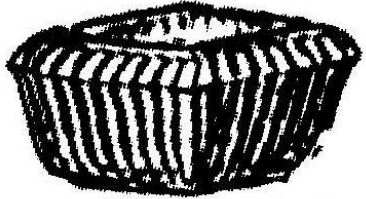
Top

Bottom

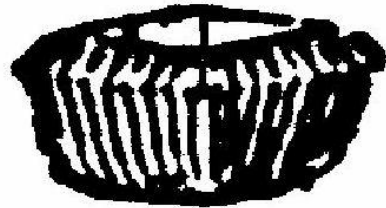
- Crystal
- Unmarked.

Caster Set  
" Dia Top  
" Across Base  
" High

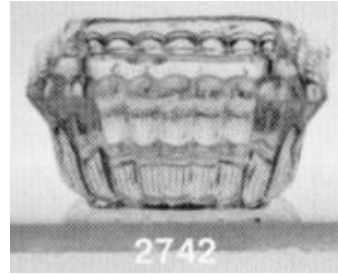
# #572 Individual Square rib sides, Circa 1880



572 Ind. Salt.  
Catalog Picture



Berg Salty Comments

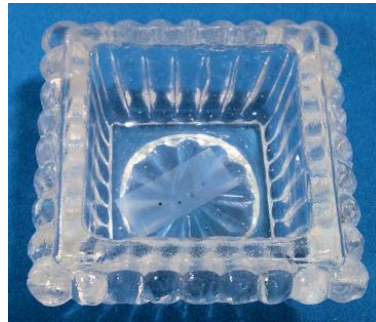


Heacock & Johnson

Individual  
1 7/8" Square  
1" High



Side



Top



Bottom

- Crystal
- Unmarked
- H&J 2742

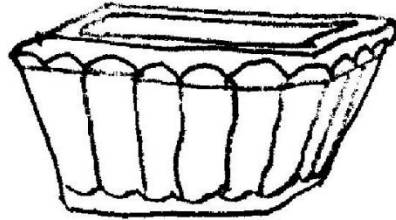


# #572 Table Square rib sides, Circa 1880



572 Table Salt

Catalog Picture



Berg Salty Comments

Side

- Crystal
- Unmarked.

Top

Bottom

Table  
" Each Side  
" High

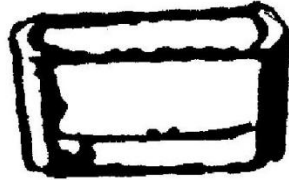


# #597 Oblong octagon shape, Circa 1880



597 ind.Salt.

Catalog Picture



Berg Salty Comments

Side

Top

Bottom

- Crystal
- Unmarked.

Individual  
" Long  
" Wide  
" High  
Estimated

This pattern made by many other companies. We do not know how to distinguish Central

# #730 Individual Paneled Rib Shell, Circa 1880

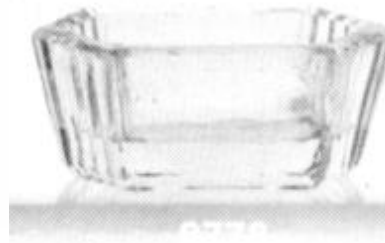


Nº 730 Ind Salt.  
Eng<sup>d</sup> 204.

Catalog Picture

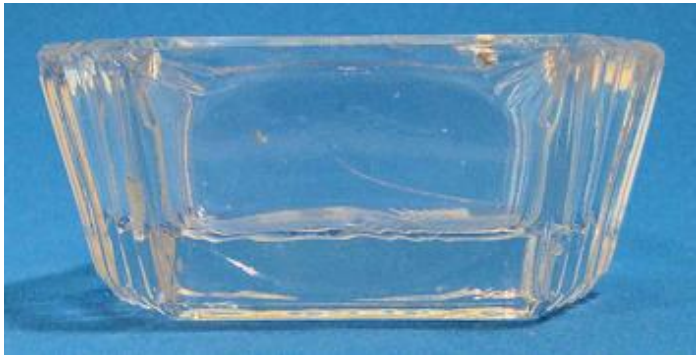


Berg Salty Comments



Heacock & Johnson

Individual  
2 5/16" Long point to point  
1 9/16" Wide  
15/16" High



Side



Top



Bottom



- Crystal
- Unmarked.
- H&J 2778
- Engraved #204

# #730 Table Paneled Rib Shell, Circa 1880



Nº 730 Table Salt  
Engd 204.

Catalog Picture



Berg Salty Comments

Side

Top

Bottom

- Crystal
- Unmarked
- Engraved #204

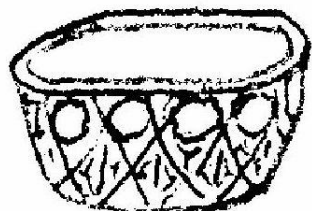
Table  
" Long point to point  
" Wide  
" High

# #775 Pressed Diamond "Round", Circa 1880



775 Ind. Salt

Catalog Picture



Berg Salty Comments



Heacock & Johnson

Individual  
1 13/16" Diameter  
7/8" High



Side



Top



Bottom



- Crystal, Blue, Amber (Light, Medium, Dark), Canary, Green (Hard to Find)
- Unmarked.
- H&J 427, 548, 558

# #793 Spice Caster, Circa 1880



Catalog Picture

Caster  
5 3/4" Square  
3 1/8" High to top of knob



Side



Top

- Crystal, Amber
- Unmarked.

# #800 Leaf and Rib, Circa 1880



505

Heacock & Johnson



Individual  
1 7/8" Dia Top  
1 1/4" Across Base  
15/16" High



Side



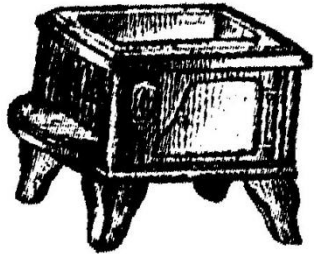
Top



Bottom

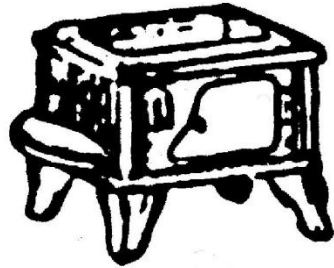
- Crystal, Blue (Light, Dark), Amber, Canary
- Unmarked.
- H&J 435, 505, 562

# #822 Stove, Circa 1880



822 Salt

Catalog Picture



Berg Salty Comments



Side

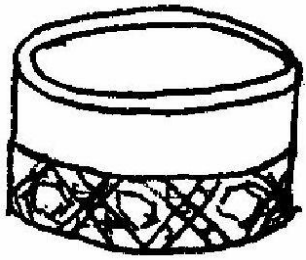
Top

Bottom

- Crystal, Blue, Amber, Canary
- Marked stylized CGCo on back of oven
- H&J 473

Individual  
" Dia Top  
" Across  
" High

# #810 Tudor Pattern, Circa 1880



Individual  
1 5/8" Diameter  
7/8" High

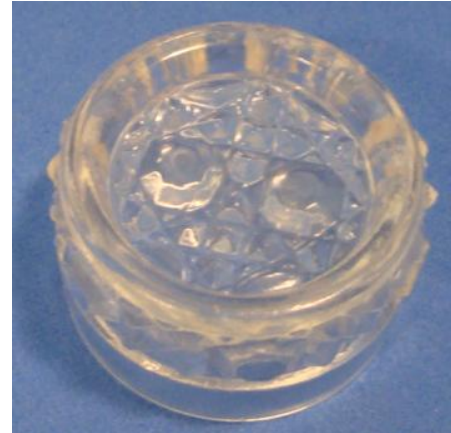
Berg Salty Comments



Side



Top



Bottom

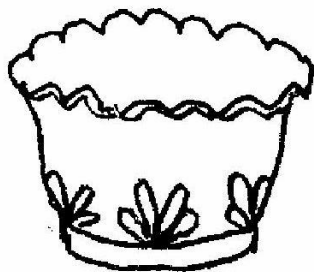
- Crystal
- Unmarked



# #830 Flower Daisy and Button, Circa 1887



830 Ind Salt



Catalog Picture    Berg Salty Comments

Side

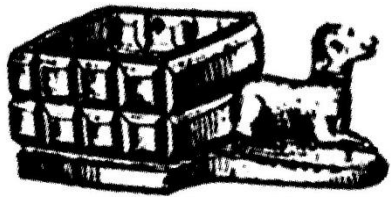
Top

Bottom

- Crystal
- Unmarked.

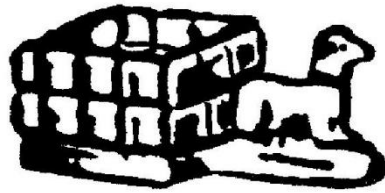
Individual  
" Dia Top  
" Across Base  
" High

# #860 Dog and Block, Circa 1880

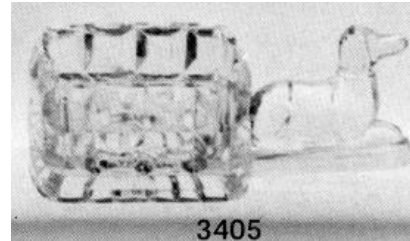


860 Ind Salt.

Catalog Picture



Berg Salty Comments



Heacock & Johnson

Individual  
3 1/8" Long  
1 1/2" Wide  
1 1/16" High  
Head 1/16" higher



Side



Top



Bottom

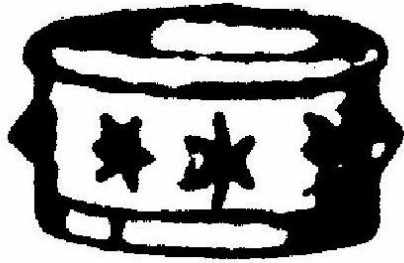


Back

- Crystal, Crystal Satin, Blue, Amber Vaseline
- Unmarked.
- H&J 3405,



# #876 Star Pattern Individual, Circa 1880



Catalog Picture

Berg Salty Comments

Side

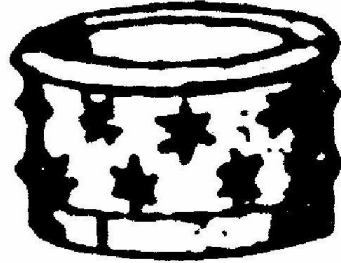
Top

Bottom

- Crystal
- Unmarked
- H&J 2566

Individual  
" Diameter  
" High

# #876 Star Pattern Table, Circa 1880



Catalog Picture

Berg Salty Comments

Side

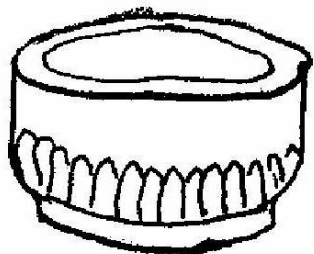
Top

Bottom

Table  
" Diameter  
" High

- Crystal
- Unmarked.

# #877 Flute Band Individual, Circa 1880



Individual  
1 3/4" Diameter  
1" High

Catalog Picture

Berg Salty Comments



Side



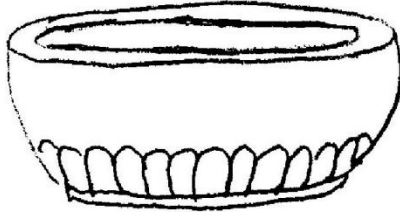
Top



Bottom

- Crystal
- Unmarked.

# #877 Flute Band Table, Circa 1880



Catalog Picture

Berg Salty Comments

Side

Top

Bottom

- Crystal
- Unmarked.

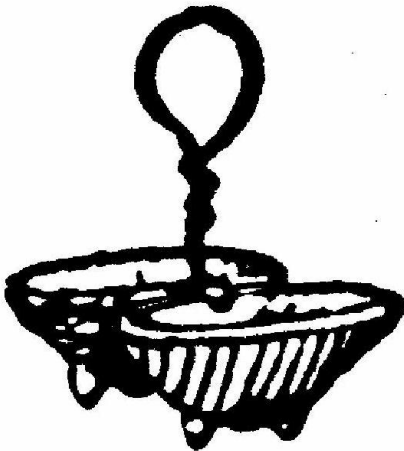
Table  
" Diameter  
" High

# #896 Double Shells, Circa 1880



#896 Double Salt

Catalog Picture



Berg Salty Comments

Side  
Top  
Bottom

- Crystal
- Unmarked.

Double  
" Across both bowls  
" Depth  
" High



No. T785 Individual Salt

No. T786 Individual Salt  
Full Cut

No.	Dozen in Bbl.	Approx. Gr. Wt.	Bbl. Price Per Dz.	Less Bbl. Price Per Dz.
T785	80	180	\$1.25	\$1.40
T786	80	180	\$8.75	\$10.00



No. T784 Individual Salt

No.	Dozen in Bbl.	Approx. Gr. Wt.	Bbl. Price Per Dz.	Less Bbl. Price Per Dz.
T784	60	145	\$1.10	\$1.20



No. T787 Individual Salt

No.	Dozen in Bbl.	Approx. Gr. Wt.	Bbl. Price Per Dz.	Less Bbl. Price Per Dz.
T787	60	145	\$ .60	\$ .75



No. T788 Celery Dip

No.	Dozen in Bbl.	Approx. Gr. Wt.	Bbl. Price Per Dz.	Less Bbl. Price Per Dz.
T788	80	180	\$ .75	\$ .90



No. T43 Salted Almond  
3 inches

No.	Dozen in Bbl.	Approx. Gr. Wt.	Bbl. Price Per Dz.	Less Bbl. Price Per Dz.
T43	24	100	\$1.85	\$2.10

Assorted Chippendale pattern salts from Central Glass Works, circa 1925

**Krys-Tol Mark ca. 1907-1926**

Mark used by Jefferson Glass Company on utility glass and its "Chippendale" pattern of tableware



# #T784 6-Panel Pedestal Chippendale Handles, Circa 1925



T784 Individual

Catalog Picture



Berg Salty Comments



Individual  
2 1/8" Dia Top  
3 9/16" Across Handles  
2 3/8" High at Handles



Side



Top



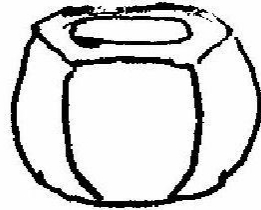
Kry-stol Mark

- Crystal
- Marked Kry-stol
- H&J 3542



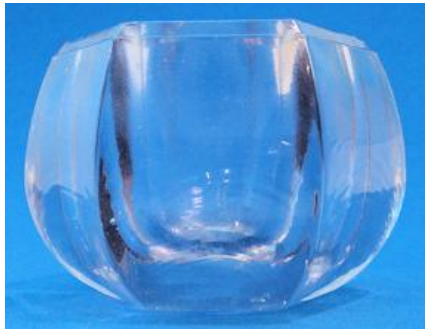
Marked Pat Feb 1907 Kry-stol  
Decorated Souvenir of Bristol Ind

# #T785 Heavy, Circa 1925

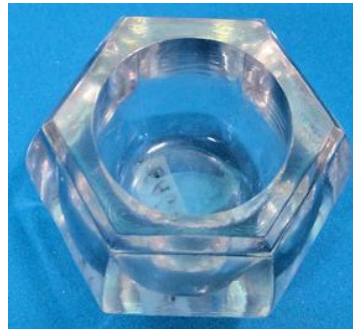


**T785 Individual**  
**T786 Individual**

Catalog Picture    Berg Salty Comments



Side



Top



Bottom

- Crystal
- Unmarked.

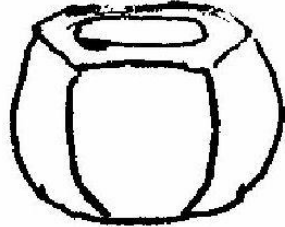
Individual  
1 13/16" Across Top  
2 1/8" Across Center  
1 3/8" High  
Estimated

This pattern made by many other companies. We do not know how to distinguish Central

# #T786 Polished sides #T785, Circa 1925



T785 Individual  
T786 Individual

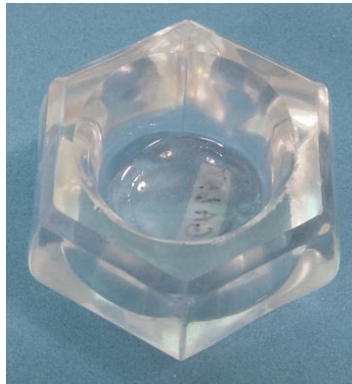


Berg Salty Comments

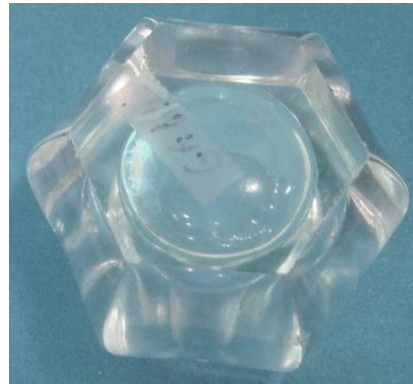
Catalog Picture



Side



Top



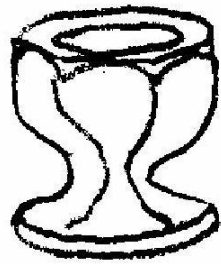
Bottom

- Crystal
- Unmarked.

Individual  
1 3/4" Across Top  
2 1/16" Across Center  
1 3/8" High  
Estimated

This pattern made by many other companies. We do not know how to distinguish Central

# #T787 Panelled Pedestal 1925



T787 Individual

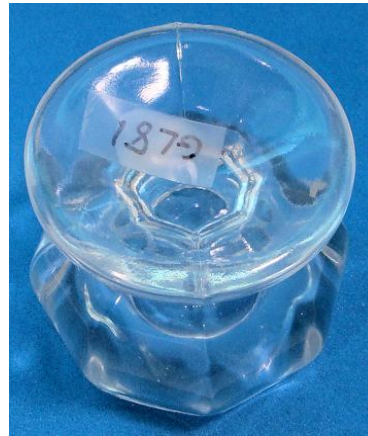
Catalog Picture Berg Salty Comments



Side



Top



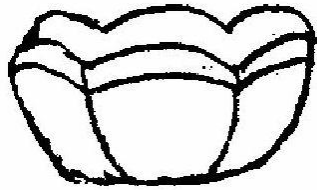
Bottom

- Crystal
- Unmarked.

Individual  
1 3/4" Dia Top  
1 5/8" Across Base  
1 5/8" High  
Estimated

This pattern made by many other companies. We do not know how to distinguish Central

# #T788 6-Panel Celery Dip 1925



T788 Celery Dip

Catalog Picture

Berg Salty Comments

Individual  
2 5/16" Dia Top  
1 1/16" High



Side



Top



Mark

- Crystal
- Marked Kry-stol.



# # 139 Huber

Unknown if a salt was made in this pattern

- Crystal
- Unmarked.

Individual  
" Diameter  
" High

# #143 Cord and Tassel

Unknown if a salt was made in this pattern

- Crystal
- Unmarked.

Individual  
" Diameter  
" High

# #145 O'Hara

Unknown if a salt was made in this pattern

- Crystal
- Unmarked.

Individual  
" Diameter  
" High



# #861 Open Plaid

Unknown if a salt was made in this pattern

- Crystal
- Unmarked.

Individual  
" Diameter  
" High

References:

Central Glass Company The First Thirty Years By Marilyn R. Hallock

Salty Comments #28, #82 By Ed Berg

5000 Open Salts By William Heacock & Patricia Johnson