

Jeffrey S. Evans & Associates

Email: info@jeffreysevans.com

Website: www.jeffreysevans.com

Mailing Address:

P.O. Box 2638

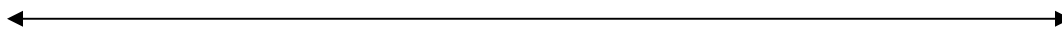
Harrisonburg, VA 22801

Gallery Location & Shipping Address:

2177 Green Valley Lane

Mt. Crawford, VA 22841

Formerly Green Valley Auctions, Inc.



**All auction information and images that follow are
courtesy of Jeffrey S. Evans & Associates
and is used here with their permission.**

**The same information may be found on their website.
Only open salt and related lots are shown here for the
benefit of open salt collectors. No further use of
information or images without permission of
Jeffrey S. Evans & Associates.**

Open Salts – Jeffrey S. Evans Auction – May 20, 2015

Price realized include a 15% Buyer's Premium

Provenance reduced to previous owner's initials as below.

Collection of James Federline of Butler, TN = JF	Collection of the late Stanley C. Goodwin, Wakefield, MA = SCG
Property of Art & Kathy Green = AKG	Collection of the late Lois S. Hirschmann, Marion, MA = LSH
Lowell/Lomas collection, Boston, MA and Hopkinton, NH = LL	From a New England private collection = NEC
From a New Jersey estate collection = NJE	Deaccessioned from a Virginia institution = VI



Lot 64

ASSORTED BLOWN GLASS ARTICLES, LOT OF NINE, including an amber bullseye pane with folded rim, an amethyst pattern-molded wine glass, and an amethyst footed open salt, rough and polished pontil marks. 19th and 20th century. Pane 8" D. Cobalt footed bowl with reduced rim, remainder undamaged.

Estimate: 50.00 - 100.00

Price Realized: 103.50



Lot 186

BLOWN-MOLDED GIII-13 FOOTED OPEN SALT, brilliant cobalt blue, ogee form with lightly tooled rim, drawn foot with plain base and rough pontil mark. Boston & Sandwich Glass Co. Circa 1825-1835. 2 3/4" H, 2 3/4" D rim, 2" D foot. Proof. VI

Estimate: 400.00 - 600.00

Price Realized: 1,035.00



Lot 188

BLOWN-MOLDED GIII-25 OPEN SALT, brilliant deep cobalt blue, compressed angular bowl with plain rim, raised on a short drawn stem and flared foot, Ringed type III base with rough pontil mark. Boston & Sandwich Glass Co. Circa 1825-1835. 1 3/4" H, 2 1/4" D rim, 2" D foot. (UPDATED 5/19/15) Polished rim. Literature: Parallels B & K I, fig. 1434. VI

Estimate: 100.00 - 150.00

Price Realized: 460.00



Lot 216

BLOWN-MOLDED GIII-23 FOOTED OPEN SALT, colorless, with tooled rim, drawn foot with Ringed type III base and rough pontil mark. Boston & Sandwich Glass Co. Circa 1825-1835. 2 1/4" H, 3" D rim, 2 1/8" D foot. Proof. VI

Estimate: 100.00 - 200.00

Price Realized: 218.50



Lot 223

ASSORTED BLOWN-MOLDED TABLE ARTICLES, LOT OF TWO, colorless, comprising a GII-21 nappie with folded rim and diamond base, and a GIII-21 open salt on foot with rayed and ringed type I base. Boston & Sandwich Glass Co. and others. Circa 1825-1840. 1" H, 5 1/8" D, and 2" H, 2 1/2" D rim. Undamaged except for minor flake to rim of salt, nappie with some expected interior wear. Literature: B & K I, fig. 1304. LL

Estimate: 50.00 - 100.00

Price Realized: 80.50



Lot 234

BLOWN-MOLDED GIII-23 HAT OPEN SALT, colorless, wide folded rim, Rayed type III base with rough pontil ring. Boston & Sandwich Glass Co. Circa 1825-1835. 2 3/8" H, 2 1/2" D rim. Undamaged. Literature: B & K I, fig. 1323a. From a Maryland private collection.

Estimate: 50.00 - 100.00

Price Realized: 69.00



Lot 245

PATTERN-MOLDED RIB FOOTED OPEN SALT, colorless with applied sapphire blue rim, double-ogee bowl with 18 ribs swirled to the right, raised on a short ribbed, compressed-knop stem and applied circular sloping foot with rough pontil mark. Possibly Midwestern. Circa 1780-1820. 3H, 2 1/4" D rim, 2 1/4" D foot. Undamaged. JF

Estimate: 300.00 - 500.00

Price Realized: 575.00



Lot 250

PATTERN-MOLDED FOOTED OPEN SALT, cobalt blue, double-ogee bowl patterned with approximately 24 vertical ribs swirled to the right at the rim, raised on a short ribbed stem and an applied circular sloping foot with rough pontil mark. United States or England. Circa 1810-1830. 3" H, 2 3/4" D rim, 1 7/8" D foot. Proof. Literature: Parallels Wilson - American Glass, vol. 1, p. 191, fig. 172, from the Barber collection. Jeffrey S. Evans and Associates, 5/21/14, lot 361. Ex-collection of Lois S. Hirschmann (retains collection sticker). JF

Estimate: 100.00 - 200.00

Price Realized: 575.00



Lot 253

PATTERN-MOLDED RIB FOOTED OPEN SALT, cobalt blue, double-ogee bowl molded with 12 vertical ribs swirled slightly to the right at the rim, raised on a short ribbed stem and an applied circular sloping foot with rough pontil mark. Possibly Midwestern. Circa 1810-1830. 3" H, 2 3/8" D rim, 2 1/8" D foot. Undamaged. Literature: Parallels Wilson - American Glass, vol. 1, p. 191, fig. 172, from the Barber collection. NJE

Estimate: 100.00 - 150.00
Price Realized: 632.50



Lot 254

PATTERN-MOLDED RIB FOOTED OPEN SALT, cobalt blue, double-ogee bowl patterned with vertical ribs, raised on a short thick stem and an applied circular sloping foot with rough iron pontil mark. Possibly Midwestern. Circa 1810-1830. 2 5/8" H, 2 5/8" D rim, 1 3/4" D foot. Undamaged. Literature: Parallels Wilson - American Glass, vol. 1, p. 191, fig. 172, from the Barber collection. JF

Estimate: 100.00 - 150.00
Price Realized: 103.50



Lot 257

PATTERN-MOLDED DIAMOND QUILT FOOTED OPEN SALT, colorless, double-ogee bowl molded with rows of 14 diamonds swirled to the right, raised on a short plain stem and applied circular sloping foot with rough pontil mark. Midwestern United States and England. Circa 1780-1820. 3" H, 2 3/8" D rim, 2 1/4" D foot. Undamaged, light open bubble to interior base. Literature: Parallels Wilson - American Glass, vol. 1, p. 183, fig. 152. NJE

Estimate: 80.00 - 120.00
Price Realized: 184.00



Lot 260

PATTERN-MOLDED RIB FOOTED OPEN SALT, colorless, double-ogee bowl patterned with 17 vertical ribs, raised on a short thick stem and an applied circular sloping foot with a scalloped edge, with a rough pontil mark. Possibly Midwestern. Circa 1810-1830. 2 3/8" H, 2 3/8" D rim, 1 7/8" D foot. Undamaged. JF

Estimate: 50.00 - 100.00
Price Realized: 184.00



Lot 896

ASSORTED NEW ENGLAND PINEAPPLE ARTICLES, LOT OF 24, colorless lead glass, including a covered sugar, spooner, and two open salts. Boston & Sandwich Glass Co. and others. Third quarter 19th century. 5/8" to 7 1/4" HOA, 2 1/2" to 5 7/8" D. A plate, salt, two berry dishes, and two sauces with a minute flake, one sauce with minor post-production polishing to the rim, remainder undamaged. Provenance: Being sold to benefit the Sandwich Glass Museum's Accession Fund. LSH

Estimate: 80.00 - 120.00

Price Realized: 57.50



Lot 913

ALMOND THUMBPRINT PAIR OF PRESSED COVERED MASTER SALTS, colorless lead glass, each pedestal-form with plain foot, covers with rope-edge rim and hexagonal finial. Third quarter 19th century. 4 1/4" HOA, 2 5/8" H base. Undamaged. LL

Estimate: 50.00 - 100.00

Price Realized: 69.00



Lot 914

ASSORTED PRESSED EAPG COVERED MASTER SALTS, LOT OF THREE, colorless lead glass, comprising a Paneled Waffle and two Ribbed Ivy examples. Together with a Bullseye covered pomade. Four pieces total. Second half 20th century. 4 1/2" to 5 1/4" HOA. Paneled Waffle and one Ribbed Ivy example undamaged, the other Ribbed Ivy with two minute flakes each to a single bead, Bullseye example with a flake to the cover rim. LL

Estimate: 100.00 - 150.00

Price Realized: 431.25



Lot 915

LILY OF THE VALLEY COVERED MASTER SALT, colorless lead glass, raised on three feet with central pendant drop, with matching cover. Fourth quarter 19th century. 4 1/4" HOA. Undamaged. LL

Estimate: 80.00 - 120.00

Price Realized: 207.00



Lot 916

ASSORTED LATE PRESSED OPEN SALTS, LOT OF SIX, including an Alexandrite example with square foot and two colorless swans. 20th century. Various sizes. Undamaged, each swan with a spot of inner-rim mold roughness. SCG

Estimate: 50.00 - 80.00

Price Realized: 46.00



Lot 917

ASSORTED PRESSED SALTS, LOT OF FIVE, comprising a canary yellow (uranium) Loop/Leaf on marble base, a starch blue Sawtooth, an opaque white Sawtooth with cover, and two lacy period. Circa 1830-1870. Various sizes. Loop with significant chipping to outside of two rim scallops and two chips to rim, Sawtooth examples undamaged except for a pattern flake to white example, lacy examples with significant damage. LL

Estimate: 50.00 - 100.00

Price Realized: 80.50



Lot 918

ASSORTED COLORED FLINT PRESSED OPEN SALTS, LOT OF FOUR, comprising a deep cobalt blue Paneled Smocking with beaded rim and scalloped foot, an amethyst Waffle base, an amethyst footed Hexagonal, and a sapphire blue flat hexagonal. Boston & Sandwich Glass Co. and others. Circa 1840-1860. Various sizes. Cobalt example undamaged but with a sizable broken bubble to underside of bowl, others average with normal chipping and roughness. LL

Estimate: 100.00 - 200.00

Price Realized: 195.50



Lot 919

ASSORTED BLOW-OVER AND CRACK-OFF OPEN SALTS, LOT OF 4, colorless, each oblong form with various rib, diamond, and fan designs, and factory polished plain rim. New England and others. Circa 1813-1830. 1 1/2" to 2" H. Average condition with some rim chips and flakes, one with interior residue. SCG

Estimate: 100.00 - 150.00

Price Realized: 92.00



Lot 920

ASSORTED EUROPEAN OPEN SALTS, LOT OF TWO, comprising an Irish cut Strawberry Diamond example raised on an applied pressed lozenge-form foot, and a Continental doppelglas example with painted portrait in base. 19th century. 2 7/8" and 1" H. Very good overall condition, cut glass example with normal flaking to rim and two shallow chips to foot, other example with a few light flakes and fading to paint. AKG

Estimate: 80.00 - 120.00

Price Realized: 46.00



Lot 921

ASSORTED GLASS OPEN SALTS, LOT OF THREE, comprising a colorless pattern-molded Diamond Quilt footed, a yellow amber Cut Diamond footed, and a colorless Cut Diamond Facet flat. 19th and 20th century. 2 1/4" and 3" H. Facet example with a pattern flake and chip, remainder undamaged. LL

Estimate: 50.00 - 100.00

Price Realized: 92.00



Lot 922

ASSORTED MOLDED OPEN SALTS, LOT OF FIVE, colorless, comprising three GV-24 baskets, one GV-24 without handle, and one basket similar to Neal RP-25, each with rough pontil mark. 19th century. 2 5/8" to 3 3/4" HOA. Handleless example with rim flake, one GV-24 and RP-25 baskets with imperfection at handle, remainder undamaged. JF

Estimate: 80.00 - 120.00

Price Realized: 402.50



Lot 925

CUT STARRED DIAMOND AND FAN OPEN SALT, colorless lead glass, serrated-scallop rim, raised on a ray-cut foot. Circa 1840-1860. 2 5/8" H, 3" D rim, 2 1/2" H foot. Undamaged. LL

Estimate: 80.00 - 120.00

Price Realized: 184.00



Lot 927

HEXAGONAL FOOTED PRESSED OPEN SALTS, PAIR, deepsteel blue, each urn-form with flanged rim and circular foot with polished pontil mark, factory polished mold lines on feet. Probably New England. Circa 1840-1860. 3 1/4" H, 3 1/2" DOA rim, 2 1/2" D foot. Undamaged with some light wear/roughness to upper corners. LL

Estimate: 80.00 - 120.00

Price Realized: 207.00



Lot 928

PANEL-CUT PAIR OF OPEN SALTS, deep cobalt blue, each oval 12-panel bowl raised on a lozenge-form foot with cut rays to underside. 19th century. 2 3/4" H, 2 3/8" x 2 7/8" D rim. Undamaged except for a minute flake to one foot and one rim. AKG

Estimate: 80.00 - 120.00

Price Realized: 258.75



Lot 929

PATTERN-MOLDED DIAMOND QUILT FOOTED OPEN SALT, brilliant blue green, double-ogee bowl molded with rows of 14 diamonds, raised on a short ribbed stem and applied circular sloping foot with rough pontil mark. Midwestern United States and England. Circa 1780-1820. 3 1/8" H, 2 1/2" D rim, 2 1/8" D foot. Shallow chip to inner rim and associated flake to top of rim. Literature: Parallels Wilson - American Glass, vol. 1, p. 183, fig. 152. LL

Estimate: 100.00 - 150.00

Price Realized: 258.75



Lot 930

PATTERN-MOLDED DIAMOND QUILT FOOTED OPEN SALTS, LOT OF TWO, colorless, each bowl of double-ogee form, the circular-foot example molded with six rows of 16 diamonds, the scallop-foot example faintly molded with three rows of 12 diamonds, each raised on a short ribbed stem and with rough pontil mark. Thomas Cains' South Boston Flint Glass Works, Midwestern United States, and England. Circa 1810-1830. 2 3/4" and 2 1/2" H. Undamaged with some very light interior residue. Literature: Parallels Kaiser -South Boston, p. 55, fig. 43. SCG

Estimate: 100.00 - 150.00

Price Realized: 207.00



Lot 931

Description: SH-1 SLEIGH-SHAPED PRESSED OPEN SALT, colorless, scrolled rim, hairpin front end, rayed base, resting on two runners. Extremely rare. Possibly Boston & Sandwich Glass Co. Circa 1835-1850. 2 1/4" H, 1 7/8" x 3 3/8". Outstanding condition for this complex design, loss to one rear scroll, shallow chip to the interior of one runner, otherwise only some scattered minor flakes/mold roughness. Literature: Neal, p. 425. Like Elsholz, lot 1561. Wilson - American Glass, Volume 1, p. 352, fig. 452. Spillman - Corning, p. 196, fig. 770. Lee - Sandwich Glass, pl. 74, fig. 9. Catalogue Note: This is only the second example of this salt that we have sold. An example from the Ewing collection was included in the 1954 Corning exhibit, case 40, no. 758. JF

Estimate: 1,000.00 - 2,000.00
 Price Realized: 4,025.00



Lot 932

BT-2 "PITTSBURGH." STEAMBOAT PRESSED OPEN SALT, deep purple blue, embossed on stern, rope table ring. Very rare. Attributed to the Stourbridge Flint Glass Works, Pittsburgh, PA. Circa 1830-1845. 1 1/2" H, 1 7/8" x 3 5/8". Stern with a moderate chip to one side, otherwise only some inner-rim flaking/mold roughness that does not affect the rim profile. Paddle wheels, bowsprit, keel, and table ring all intact. Literature: Neal, p. 21. Like Elsholz, lot 139. Innes - Pittsburgh Glass, color pl. 6. Spillman - Corning, p. 174, fig. 651. Provenance: Property of a New England private collector.

Estimate: 300.00 - 500.00
 Price Realized: 1,150.00



Lot 933

BT-5 "LAFAYET." STEAMBOAT PRESSED OPEN SALT, unlisted fiery opalescent blue to opaque mottled blue, marked "B. & S. / GLASS. / Co" on stern and "SANDWICH" on interior and under base. Very rare, possibly extremely rare. Boston & Sandwich Glass Co. Circa 1830-1845. 1 1/2" H, 2" x 3 5/8". Virtually proof having only a single shallow inner-rim chip and a flake to side of rudder. Literature: Neal, p. 29. Spillman - Corning, p. 175, fig. 656 and color pl. 10. LL

Estimate: 500.00 - 800.00
 Price Realized: 1,092.50



Lot 934

CD-4 LYRE PRESSED COVERED SALT, colorless, on four scrolled feet, variant cover with beads on rim interior arranged 10 x 20 x 10 x 20. Colorless not recorded by Neal, extremely rare. Boston & Sandwich Glass Co. Circa 1835-1845. 2 3/4" HOA, 2" x 3 1/8" D base. Cover virtually proof with only a minor flake to the underside of one corner which does not affect the profile, base with a crack in one corner that does not affect the resonance, otherwise near proof. Literature: Neal, p. 43. Parallels B & K I, fig. 1451. Jeffrey S. Evans and Associates, 1/18/14, lot 63. JF
Estimate: 300.00 - 500.00
Price Realized: 747.50



Lot 935

CN-1A CROWN PRESSED OPEN SALT, strong fiery opalescent, on four scroll feet. Rare. Boston & Sandwich Glass Co. Circa 1830-1845. 2 1/8" H, 1 7/8" x 3 1/8".
Proof except for a moderate underfill to one corner rim scroll, as made. Literature: Neal, p. 47. Spillman - Corning, p. 177, fig. 666. Parallels B & K I, fig. 1455. LL

Estimate: 100.00 - 200.00
Price Realized: 172.50



Lot 936

CT-1 CHARIOT PRESSED OPEN SALT, silvery opaque blue with mottling, scallop and point rim. Very rare. Boston & Sandwich Glass Co. Circa 1835-1850. 1 3/4" H, 2 1/8" x 2 7/8". Excellent condition, rim with a shallow chip to outer edge at one end that is partially filled in, otherwise only a few light flakes and mold roughness. Literature: Neal, p. 35. Parallels B & K I, fig. 1461. LL
Estimate: 300.00 - 500.00
Price Realized: 316.25



Lot 937

GA-4 GOTHIC ARCH AND HEART PRESSED OPEN SALT, opalescent medium blue to mottled opaque powder blue, even scallop rim. Unlisted color, possibly unique. Probably Boston & Sandwich Glass Co. Circa 1835-1845. 1 3/4" H, 2" x 2 3/4". Near proof, rim with two flakes to outer edge, neither of which affect the top profile, corners of body with some light flaking/mold roughness, underside of base with a shallow chip and several minute flakes. Literature: Neal, p. 92. LL
Estimate: 400.00 - 600.00
Price Realized: 747.50



Lot 938

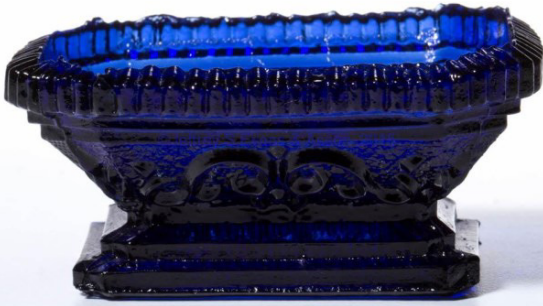
MV-1 MOUNT VERNON PRESSED OPEN SALT, strong bluish aquamarine with milky striations, scallop and point rim. Scarce. Probably Mount Vernon Glass Co., possibly Boston & Sandwich Glass Co. Circa 1835-1850. 1 3/4" H, 2 1/8" x 2 7/8". Virtually proof with only a spot of mold roughness to inner rim and a minor flake to one base corner. Literature: Neal, p. 132. Like Elsholz lots 1005, 1006. Parallels B & K I, fig. 1462. LL
Estimate: 100.00 - 200.00
Price Realized: 575.00



Lot 939

MV-1 MOUNT VERNON PRESSED OPEN SALT, light bottle green, scallop and point rim. Scarce. Probably Mount Vernon Glass Co., possibly Boston & Sandwich Glass Co. Circa 1835-1850. 1 3/4" H, 2 1/8" x 2 7/8". Shallow chip top of rim and under base, otherwise only some minor mold roughness. Literature: Neal, p. 132. Like Elsholz lots 1005, 1006. Parallels B & K I, fig. 1462. LL

Estimate: 50.00 - 100.00
Price Realized: 115.00



Lot 940

OO-13 OCTAGON OBLONG PRESSED OPEN SALT, unlisted cobalt blue, serrated rim. Probably very rare. Possibly Boston & Sandwich Glass Co. Circa 1835-1850. 1 1/4" H, 2 1/8" x 3". Prof. Literature: Neal, p. 179. AKG

Estimate: 100.00 - 200.00
Price Realized: 345.00



Lot 941

OP-15 VARIANT OVAL PEDESTAL PRESSED OPEN SALT, light golden amber, shaped rim and foot, unlisted variation without prisms to interior of foot. Probably extremely rare. Unknown origin. Circa 1830-1850. 1 5/8" H, 2" x 3 1/8" rim, 1 3/8" x 2" foot. Undamaged with just some very minor mold roughness. Literature: Parallels Neal, p. 265. AKG

Estimate: 100.00 - 200.00
Price Realized: 575.00



Lot 942

UNLISTED OP OVAL PEDESTAL PRESSED OPEN SALT, amethyst, shaped rim with two fans suspended above a Strawberry Diamond on each side, flanked by acanthus leaves, pointed oval foot with ringed outer edge and diamond base. Probably extremely rare. Circa 1830-1845. 1 3/4" H, 2 3/8" x 3 1/2". Undamaged except for a few very minor flakes to inner rim and under foot, rim with partial heavy fin with small loss, as made. LL

Estimate: 100.00 - 200.00

Price Realized: 747.50



Lot 943

PP-3A PEACOCK EYE PEDESTAL PRESSED OPEN SALT, unlisted deep brilliant violet blue, serrated scallop and point rim, base with 27 rays and two faint inner rings of beads, slightly out of line cap ring. Probably extremely rare, possibly unique. Possibly Boston & Sandwich Glass Co. Circa 1830-1845. 2" H, 3 1/8" D rim, 2 1/4" D foot. Near proof having only a shallow chip to outer edge of one eye. Literature: Neal, p. 297. LL

Estimate: 400.00 - 600.00

Price Realized: 805.00



Lot 944

ASSORTED LACY PRESSED OPEN SALTS, LOT OF SIX, comprising a violet blue PR-1b, together with colorless NE-1a, PR-1, RP-25, SD-7, and SN-1c-a with 22 rays to base. Boston & Sandwich Glass Co. and others. Circa 1830-1850. Various sizes. Violet example with crack, RP and SN examples near proof, remainder with normal chipping and mold roughness. SCG

Estimate: 80.00 - 120.00

Price Realized: 138.00



Lot 945

ASSORTED LACY PRESSED OPEN SALTS, LOT OF 2, comprising a cobalt blue MV-1b and a colorless NE-4. Very rare and plentiful. Boston & Sandwich Glass Co. and New England Glass Co. Circa 1830-1850. Various sizes. Blue example with a moderate loss to rim at one end due to two broken-out bubbles, a chip to one foot and one lower corner, other example with some shallow rim chips and mold roughness. JF

Estimate: 50.00 - 100.00

Price Realized: 46.00



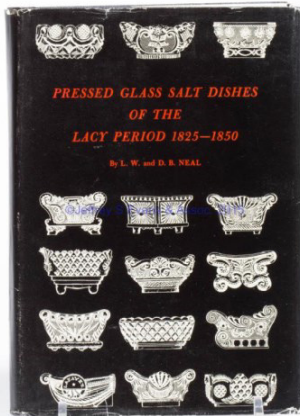
Lot 946

ASSORTED LACY PRESSED OPEN SALTS,
LOT OF FIVE,

including a cobalt blue OL-11 and colorless BS-4. Very rare. Boston & Sandwich Glass Co. and others. Circa 1830-1850. Various sizes. Fair to poor condition, OL-11 with large rim chip, BS-4 with significant wear, others with crack or loss. LL

Estimate: 50.00 - 80.00

Price Realized: 218.50



Lot 947

LACY PERIOD SALTS REFERENCE VOLUME,
"Pressed Glass Salt Dishes of the Lacy Period 1825-1850", L. W. and D. B. Neal, Philadelphia, PA: self-published, 1962. Hard cover with dust jacket. Excellent condition with light wear to jacket. NEC

Estimate: 50.00 - 80.00

Price Realized: 69.00



Lot 952

PRESSED LACY TOY OVAL BOWLS, LOT OF TWO,
comprising an opalescent example with deep pooling in base and high plain table ring, and a colorless example with rope table ring. Boston & Sandwich Glass Co. Circa 1835-1850. 1 1/4" x 1 7/8". Undamaged, opalescent example with an annealing check off rim, as made. Literature: Parallels B & K III, fig. 3339. NEC

Estimate: 50.00 - 100.00

Price Realized: 57.50



Lot 953

ASSORTED LACY PRESSED TOYS, LOT OF 13, including two cups and saucers and a wash basin. Boston & Sandwich Glass Co. and possibly others. Circa 1830-1850. Basin 3 1/4" D. Oval dish and two plates undamaged, one cup with crack, remainder with normal chipping/mold roughness. Provenance: SCG

Estimate: 80.00 - 120.00
Price Realized: 69.00



Lot 1017

ASSORTED PRESSED LACY ARTICLES, LOT OF 11, colorless and fiery opalescent, including a Lee-Rose No. 672 cup plate, four other cup plates, four toys, and two salts. Boston & Sandwich Glass Co. and others. Circa 1830-1860. Various sizes. Toy tumbler, plate, and cup plates near proof, remainder fair to poor with imperfections. Provenance: From the collection of Dr. Larry McCallister, Muncie, IN.

Estimate: 50.00 - 80.00

Price Realized: 69.00