

Green Valley Auctions, Inc.
now doing business as:

Jeffrey S. Evans & Associates

Email: info@jeffreysevans.com

Website: www.jeffreysevans.com

Mailing Address:

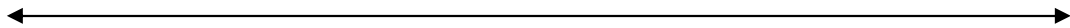
P.O. Box 2638

Harrisonburg, VA 22801

Gallery Location & Shipping Address:

2177 Green Valley Lane

Mt. Crawford, VA 22841



All auction information and images that follow are
courtesy of Jeffrey S. Evans & Associates
and is used here with their permission.

The same information may be found on their website.
Only open salt and related lots are shown here for the
benefit of open salt collectors. No further use of
information or images without permission of
Jeffrey S. Evans & Associates.

SATURDAY SESSION STARTING AT 9:00 AM - OPEN MASTER SALTS

Buyer's premiums are not included in sold for prices.

Selling salts from the Catharine (Cackey) Marsden collection including 18th and 19th century antique open master salts. Catherine has been collecting open salts since the mid 1940's, mostly the small glass and china types, c.1870's-1920's. By 1976, when she and her husband participated in our Country's Bicentennial from 1976-1981, she became much more interested in the antique open master salts, c.1770-1870. She was a long time member of "The New England Society of Open Salt Collectors," and in 1986 she was one of the Co-Founders of the "Open Salt Collectors of the Atlantic Region", (OSCAR). She served as their first president from 1986-1992. Many pieces from her collection are shown in this section. NOTE: Expect use and wear chips on all salts.

LACY SALTS - BOSTON & SANDWICH GLASS CO. - EAGLE SERIES



400. Neal **EE-7** Empire Sofa (rare), tiny chip & crack, 2-1/4" h. x 4" l. **\$90**



401. Neal **EE-8** Cadmus or Ships & Eagles. French packet ship that brought Gen. Lafayette to America in 1824 (very rare), good condition, 1-3/4" h. x 3" d. **\$425**



402. Neal **EE-3B** Scrolled Eagle or Rope Eagle, small chip on edge, 2" h. x 3-1/4" l. **\$110**



403. Neal **EE-6** sometimes called Coffin Eagle, flake chip on base & upper rim chips, 1-1/2" h. **\$110**



404. Neal **EE-1A** Constitution Eagle, 2 chips on base, 2" h. **\$90**

LACY SALTS - BOSTON & SANDWICH GLASS CO.



405. **BF-1C** Basket of Flowers, curlers missing on each corner foot and 2 repairs, 2" h. **\$30**



406. **BF-2** Basket of Flowers, good condition, 1-7/8" h. **\$70**



407. **SD-7** Strawberry Diamond, good condition, 1-7/8" h. **\$40**



408. **SD-4A** Strawberry Diamond, chip on rim and on foot, 2" h. **\$70**



409. **SD-7A** Strawberry Diamond, good condition, 1-7/8" h. **\$50**



410. **SD-13** Strawberry Diamond, bottom slightly opalescent, 2 chips on rim, 1-7/8" h. **\$80**



411. **SD-4** Strawberry Diamond, 2 chips on rim, 2" h. **\$80**



412. **GA-4** Gothic Arch (very rare), 3 nicks on rim, 1-3/4" h. **\$150**



413. **GA-2** Gothic Arch, chips on rim, 1-5/8" h. **\$90**



414. **SL-1A** Shell, good condition, 1-5/8" h. **\$70**



415. **SL-14** Shell, 2 tiny chips on rim, 1-5/8" h. **\$80**



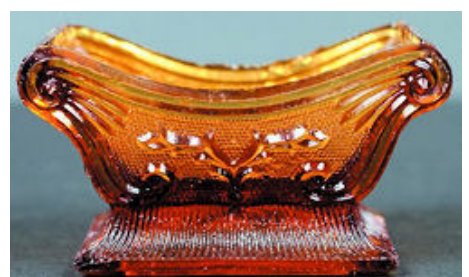
416. **PO-4** Peacock Eye oval, good condition, 1-3/8" h. **\$110**



417. **PR-10** Peacock Eye round, chip on rim, few on base, 1-1/2" h. **\$100**



418. **LE-2** Lyre (very rare) not noted in clear in Neal, under fill on one side, flaw in making mold, 1-3/4" h. **\$140**



419. **SN-1** Stag Horn medium amber, good condition, 1-3/4" h. **\$140**



420. **OO-4A** oblong octagon (rare), tiny chip on rim, 1-5/8" h. **\$130**



421. **CT-1A** Chariot, chip on top and bottom rim. **\$50**



422. **OL-12** oval "Cornucopia" (rare), 2 chips on rim and 3 chips on bottom, 1-3/8" h. **\$100**



423. **OL-14** diamond star, chip on base, 1-3/4" h. **\$90**



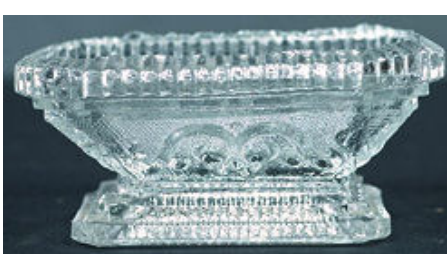
424. **OL-19** oval (rare), good condition, 1-3/4" h. **\$60**



425. **OL-17** oval, 2 chips on bottom, 1-3/4" h. **\$30**



426. **OL-16A** oval (extremely rare), Neal doesn't note in clear, good condition, 1-3/4" h. **\$170**



427. **OO-13** oblong octagon, small chip on bottom, 1-3/8" h. **\$50**



428. **OO-2** oblong octagon, chip on bottom, 1-3/4" h. **\$60**



429. **OO-1A** oblong octagon, chip on rim and bottom, 1-1/2" h. **\$60**



430. **SD-2A** Strawberry Diamond (very rare), 2 tiny chips on rim, 2-1/8" h. **\$90**



431. **RP-25** round pedestal (rare) good condition, 2-1/4" h. **\$80**



432. **RP-18** round pedestal, 2 tiny rim chips, 1-3/4" h. **\$100**



433. **RD-20** round, chip on rim, 1-5/8" h. **\$100**

LACY SALTS - PITTSBURGH AREA



434. **RP-5** round pedestal (rare), 2 chips on rim, 2-1/4" h. **\$90**



435. **OG-4** oblong (rare) tiny chip on rim, 1-1/2" h. **\$80**



436. **PP-1** peacock eye pedestal (very rare), tiny chip on rim, 2-3/4" h. **\$375**



437. **OL-24** oblong (rare), chips on bottom, 1-1/2" h. **\$40**



438. **RD-27A** round, tiny chip on bottom, 1-1/2" h. **\$90**



439. Neal unlisted similar to **RP-32** (very rare) round pedestal, good condition, 2-1/2" h. **\$190**



440. Neal unlisted similar to **RD-12** round (extremely rare, very unusual bottom, good condition, 1-1/2" h. **\$350**

LACY SALTS - NEW ENGLAND GLASS CO.



441. **BH-1** bee hive (very rare), small chip on rim, 2" h. **\$110**



442. **NE-4** chips top & bottom, 2" h. **\$70**



443. **NE-3** under fill on one side, (very rare), chip on rim, 2" h. **\$40**



444. **NE-2** chip on rim, 2" h.
\$40



445. **OL-27** oval New England Area (very rare), good condition, 1-1/2" h. **\$160**



446. **NE-1A** opaque white New England Glass Co., (very rare), good condition, 2" h. **\$170**

LACY SALTS - MT. VERNON GLASS CO., NY



447. **MV-1** aqua, big chip on rim, 1-3/4" h. **\$130**



448. **MV-1A** 2 chips on top rim (B & S Glass Co.), 1-3/4" h. **\$70**

LACY SALTS - PHILADELPHIA AREA



449. **OP-20** very rare, chip on rim, black slag mark on one side, 2-1/4" h. **\$180**

LACY SALTS - PROVIDENCE FLINT GLASS CO.



450. **OG-10** oblong (rare), tiny chip on top, 1-3/4" h. **\$120**

LACY SALTS – FRENCH



451 **RD-9A** round, good condition, 1-3/8" h. **\$40**



452. **RD-9** round, good condition, 1-3/8" h. **\$50**



453. **D1-18** divided (rare), small chip on bottom, 1-5/8" h. **\$140**

CHINESE EXPORT PORCELAIN TRENCHER SALTS & FRENCH SALTS



454. Chinese export porcelain trencher c.1785-1795, 1-3/8" h. **\$225**



455. Chinese export porcelain trencher c.1770-1790, 1-1/2" h. **\$300**



456. Canton Chinese export porcelain trencher c.1840-1850, 1-3/8" h. **\$225**



457. Chinese export porcelain trencher c.1785-1795, 1-3/4" h. **\$225**



458. Pair Chinese export trenchers, late 1800's, 1-1/2" h. **\$325**



459. French earthenware, Roven, Normandy c.1750-1760, paint restoration and repaired, 1-3/4" h. **\$70**



460. French Faience earthenware c.1780-1810, chips, 1-1/2" h. **\$70**

SILVER SALTS WITH LINERS



461. German silver master, Augsburg Germany c.1736, no liner originally, 2" h. **\$150**



462. Master salt, English Sheffield plate c.1830-1840, cobalt liner, 2" h. **\$40**



463. American silver salt c.1850-1860, cobalt liner, 2" h. **\$60**



464. Master salt English Georgian silver c.1796-1797, blown glass liner, 2-1/4" h. **\$120**



465. Silver plate Derby Silver Co. c.1880, green liner, 1-3/8" h. **\$60**



466. Sterling silver oval salt c.1880, robins egg blue liner-rare color, 1-1/8" h. **\$70**



467. Silver plate c.1870-1875, green liner, 2" h. **\$60**

MISCELLANEOUS SALTS



468. English Creamware boat shaped divided c.1770-1780, 2-3/8" h. **\$110**



469. Oblong Irish-English flint c.1860-1870, good condition, 1-3/8" h. **\$40**



470. New England Glass Co. flint bulls eye c.1860-1870, good condition, 1-5/8" h. **\$60**



471. New England Glass Co. flint c.1850-1870, good condition, 2" h. **\$40**



472. American flint glass c.1870-1880, good condition, 1-1/4" h. **\$60**



473. Pedestal salt Irish cut glass Waterford c.1820-1830, 2-3/4" h. **\$60**



474. Boat salt light amber Irish Waterford cut glass c.1840-1860, 3-1/4" h. **\$70**



475. Pedestal salt probably Waterford c.1860-1870, 2-1/2" h. **\$90**



476. Steigel type flint open salt c.1769-1772, 3-1/4" h. **\$100**



477. Steigel type flint open salt c.1771-1774, 2-3/4" h. **\$120**



478. Clear flint-mold blown probably New England area c.1800-1820, 3" h. **\$130**

ENGLISH - IRISH - AMERICAN SALT BOATS c.1790-1880



479. Old Waterford flint Irish salt boat c.1790-1818, 3-1/2" h. **\$40**



480. Pair old Waterford Irish salt boats c.1820-1840, 3" h. **\$80**



481. Waterford Irish salt boat
c.1820-1840, 3-1/4" h.
\$30



482. Waterford Irish salt boat
c.1830-1840, 3-3/8" h. **\$50**



483. American heavy flint,
probably New England Glass
Co. c.1850-1860, 3-1/2" h. **\$40**



484. American flint glass boat
salt c.1870-1880, 3" h.
\$40



485. American, probably New
England Glass Co. c.1860-
1870, 3-1/4" h. **\$30**



486. Old Waterford Irish flint
salt boat c.1850-1860, repaired
at pedestal, 3-1/4" h. **\$20**

487. No Lot
488. No Lot



489. Irish salt boat flint glass
c.1870, 3-1/4" h. **\$70**

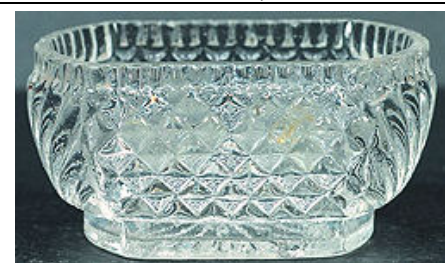


490. Waterford Irish salt, foot
repaired, 4-1/4" h. **\$20**

**PRE-LACY PERIOD THREE MOLD FLINT GLASS OPEN SALTS c.1818-1825
BY NEW ENGLAND GLASS CO., AND BAKEWELL & CO.**



491. Three mold flint glass open
salt, probably Irish c.1820, good
condition, 1-1/2" h. **\$40**



492. Three mold flint glass
open salt, good condition,
1-5/8" h. **\$40**



493. Three mold flint glass
open salt, rim chips, 1-1/2" h.
\$30



494. Three mold flint glass open salt c.1818-1820, rim chips, 1-1/2" h. **\$20**



495. Three mold flint glass open salt, good condition, 1-1/2" h. **\$30**



496. Three mold flint glass open salt, rim chips, 1-1/2" h. **\$30**



497. Pair three mold flint glass open salt, chips, 1-5/8" h. **\$40**



498. Three mold flint glass open salt, chips, 1-5/8" h. **\$30**



499. Three mold flint glass open salt New England Glass Co. c.1819-1820, rim chips, 1-3/4" h. **\$30**



500. Three mold flint glass open salt New England Glass Co. c.1819-1820, rim chips, 1-5/8" h. **\$30**



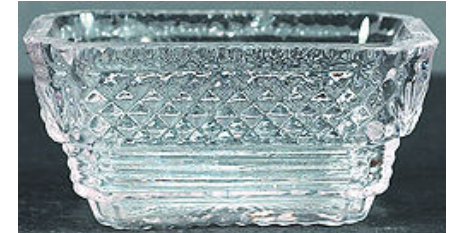
501. Three mold flint glass open salt New England Glass Co. rare shape, rim chips, 1-3/4" h. **\$30**



502. Three mold flint glass open salt, rim chips, 1-3/8" h. **\$10**



503. Three mold flint glass open salt, tiny rim chip, 1-1/2" h. **\$30**



504. Three mold flint glass open salt, rare due to condition, 1-3/4" h. **\$70**



505. Three mold flint glass open salt mold blown and cut c.1825-1830, rare due to condition, 1-1/2" h. **\$30**



506. Three mold flint glass open salt, rare due to condition, 1-3/4" h. **\$20**



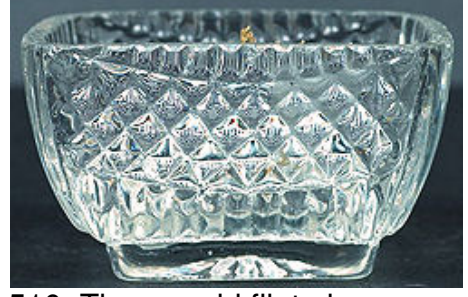
507. Three mold flint glass open salt mold blown and cut c.1825-1830, rare due to condition, 1-1/2" h. **\$30**



508. Three mold flint glass open salt, base chip, 2" h. **\$20**



509. Three mold flint glass open salt mold blown and cut c.1825-1830, rare condition, 1-5/8" h. **\$20**



510. Three mold flint glass open salt mold blown, rare condition, 1-7/8" h. **\$20**



511. Three mold flint glass open salt, chips on rim, 2" h. **\$10**



512. Three mold flint glass open salt, chips on rim, 2-7/8" h. **\$10**



513. Three mold flint glass open salt, chips on rim, 2" h. **\$10**



514. Three mold flint glass open salt, chips on rim, 1-3/4" h. **\$30**

MOLD BLOWN c.1825-1830



515. Mold blown B. & S. Glass Co., 2-1/4" h. **\$400**



516. Mold blown French c.1830-1840 (scarce), 2-1/8" h. **\$50**



517. "Bee Hive" B. & S. Glass Co. (rare), 1-3/4" h. **\$30**

PEDESTAL TYPE EARLY AMERICAN PATTERN GLASS c.1850-1890



518. Stippled Swag, 2-1/4" h. \$10



519. Beaded Chain, 2-1/2" h. \$30



520. Acorn Medallion, 3-1/4" h. \$30



521. Leaf & Dart, 2-1/2" h. \$15



522. Oak Leaf, 2-1/4" h. \$10



523. Open Rose, 2-5/8" h. \$10



524. Cabbage Rose, 2-1/2" h. \$10



525. Stippled Scroll, 2-1/2" h. \$30



526. Stippled Chain, 2-1/2" h. \$10



527. Bell Flower Type I, 2-3/4" h. \$20



528. Bell Flower Type II, 2-3/4" h. \$10



529. Buckle - smooth top, 2-1/2" h. \$10



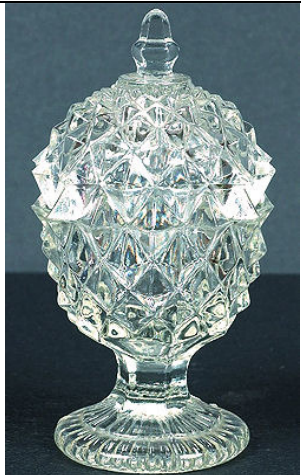
530. **Blackberry**, 2-1/2" h. \$20



531. **Blackberry**, rare version - round berries, 2-1/2" h. \$20



532. **Diamond Sawtooth** missing cover, 3-1/4" h. \$10



533. **Diamond Sawtooth** with cover, 5-1/4" h. \$30



534. **Scroll with Flowers**, 2-1/4" h. \$20



535. **Powder and Shot** c.1870 Sandwich Glass Co. (rare), 1-3/4" h. \$70



536. **Blackberry with Leaf**, 2-7/8" h. \$10



537. **Stippled Peppers**, 3" h. \$40



538. **Diamond Prism**, 2-7/8" h. \$10



539. **Prism with Diamond Points**, 3-1/8" h. \$10



540. **Diamond Sawtooth** open flat top, 3" h. ??



541. **Palmette**, 2-1/2" h. \$20



542. **Almond**, 2-1/2" h.
??



543. **Buckle** scalloped top,
2-3/8" h. \$20



544. **Shell with Scalloped Rim**
c.1870, 2-3/8" h. \$30



545. **Sawtooth Circle**, 2-3/8" h.
\$10



546. **Blocked Arches**, 2-5/8" h.
\$10



547. **Lily of the Valley**,
2-3/4" h. \$30



548. **Fine Rib**, 3" h.
\$10



549. **Stippled Ivy**, 2-3/4" h.
\$20



550. **Triangular Prism**,
2-7/8" h. \$10



551. **Grape Band**, 2-1/2" h.
\$10



552. **Star in Honeycomb**,
2-7/8" h. \$20



553. **Strawberry** - B & S Glass
Co. c1860's, 2-1/2" h. \$20



554. **Arch Leaf**, 2" h.
\$10



555. **Diamond Sunburst**,
2-3/4" h. ??



556. **Diamond Point** - unusual
shape bowl, 2-5/8" h. **\$10**



557. **Ribbed Palm**, 2-7/8" h. **\$20**



558. **Hops Band**, 2-3/8" h. **\$30**



559. **Pressed Leaf**, 3" h. ??



560. **Almond Thumb Print**,
2-5/8" h. ??



561. **Jacobs Ladder** - regular
pattern top, 2-5/8" h. **\$20**



562. **Jacobs Ladder** - turned
down top (rare), 2-3/4" h. **\$30**



563. **Inverted Fern**, 2-1/4" h.
\$10



564. **Dewdrop**, 2-1/4" h.
\$10



565. **Harp** c.1860's, 2-1/8" h.
\$10



566. **Cable flint** c.1860-1870
(very scarce), 3-1/4" h. **\$10**



567. **Eureka** c.1865-1870 flint,
3-1/4" h. **??**



568. **Early Lotus** by McKee
c.1860-1871, 3-1/2" h. **\$10**



569. **Tulip & Sawtooth** c.1860-
1865, 3-1/2" h. **\$10**



570. **Argus Thumb Print**, flint
c.1850-1860, 3" h. **\$30**



571. **Argus** c.1870, chips,
2-1/2" h. **\$10**



572. **Lady Hamilton**, 3" h. **\$20**



573. **New England Pineapple**
c.1850-1870 (rare), 2-3/4" h.
\$20



574. **Prism** by Bakewell Pears,
2-1/4" h.
\$10

SPECIAL PEDESTAL TYPE



575. B. & S. Glass Co. **Loop**, opalescent flint c.1860's (rare), 2-1/4" h. **\$50**



576. B. & S. Glass Co. milk glass **Strawberry** c.1860's (rare), 2-1/2" h. **\$50**



577. **Leaf & Dart** with cover, chips (very scarce), 3-3/4" h. **\$40**



578. **Thumb Print & Hobnail** with cover late 1850's, 3-3/4" h. **\$50**



579. **Almond Thumb Print** with cover, 4-1/4" h. **\$50**



581. **Mitre Diamond** with cover N.E. Glass Co. or J.B. Lyon & Co., Pittsburgh, 5" h. **\$50**

(580. No Lot)

PATTERN GLASS OVAL DISH TYPE c.1850-1890



582. **Bleeding Heart** U.S. Glass Co. c.1870's (very rare), 1-1/3" h. **\$80**



583. **Beaded Acorn** B. & S. Glass Co. c.1869 (rare), 1" h. **\$50**



584. **Oak Leaves** c.1870's (rare), 1-1/8" h. **\$10**



585. Central Glass Co. (scarce), 1-1/8" h. **??**



586. **Sunburst and Bar** c.1870-1880 (very scarce), 1-3/8" h. **\$10**



587. **Heavy Drape** c.1850-1870, 1-1/4" h. **\$10**



588. **Washington Centennial** Gillinder Glass c.1876-1889 (rare), 1-1/2" h. **\$20**



589. **Banded Buckle** flint c.1870-1880 (scarce), 1-1/2" h. **\$10**



590. **Grasshopper** c.1885, 1-1/2" h. **\$30**

MISCELLANEOUS OPEN SALTS



591. American glazed pottery c.1860-1870 (unusual), 2" h. **\$90**



592. Copper luster - English c.1870-1880, 2" h. **\$40**



593. Creamware - English c.1850-1860, hairlines, 1-3/4" h. **\$70**



594. Double salt - Germany
c.1880, 1-3/4" h.
\$10



595. Salt boat on turtle c.1875-
1890 Adams Co., flake chip on
tail (very scarce), 2" h. **\$30**



596. Squirrel on stump with nut
Portland Glass Co., chips on
tail (rare), 1-3/4" h. **\$90**

PEWTER SALTS - 1680-1850



597. Rare octagonal base and
top capstan salt, English
c.1680-1700, 2-1/2" h.
\$80



598. European probably French
capstan, c.1700-1725 (rare), 1-
3/4" h.
\$250



599. Rare octagonal base
capstan salt, English, c.1720-
1750, quality rose mark in
base, 2-1/2" h. **\$70**



600. Probably French capstan
salt, c.1750-1790, 2-1/4" h.
\$70



601. Central Europe round
base capstan salt, c.1780-1810,
OUAU-1 on bottom,
2-1/4" h. **\$50**



602. American pewter cup salt,
c.1770-1790, decoration in
center of bowl, 1-7/8" h.
\$140



603. English pewter maker "Ingram & Hunt" Bewdly England, c.1788-1807 trencher salt, The Salt Colonial Williamsburg, copied for their shops, 1-5/8" h. **\$160**



604. American pewter cup salt sometimes called Tavern salt, c.1790-1820, 3-1/8" h. **\$170**



605. American pewter salt "Roger Smith Co., Hartford, CT", c.1850, (name on base), 2" h. **\$90**



606. Rare American Colonial period pewter round cup salt by Thomas Danforth II, c.1755-1782, including article in NE Antiques Journal on family, 1-1/2" h. **\$120**

PEDESTAL AND FLAT TOP PATTERN GLASS MASTER SALTS



607. Early heavy master, c.1830-1850, 2" h. **\$10**



608. Challinor Taylor & Co., c.1891, Pittsburgh, Pa., 1-1/2" h. **\$10**



609. Bryce Bros. USA, c.1880-1895, sawtooth and band pattern, 1-1/2" h. **??**



610. Duncan, (US Glass Co.), c.1890, beveled buttons with individual salt, 1-3/4" h. **\$10**



611. Oblong pleated rib, c.1870-1880, 1-1/2" h. **\$10**



612. Adams Glass Co., c.1885-1895 block & star, 2" h. **\$10**



613. Pressed and cut yellow glass, c.1875, (rare color), 1-1/4" h. **\$70**



614. NE Glass Co. bulls eye with knob stem, c.1850-1860, 3-3/4" h. **\$10**



615. US Glass Co., c 1898 tooth pick and open salt advertising item, Chicago Mase Co., Phila., Pa., 3-1/2" h. **\$10**



616. Heavy master, c. 1880, bulls eye or frogs eye, 2" h. **\$10**



617. Challinor Taylor & Co., c.1880, paneled rib, 1-7/8" h. **??**



618. NE Glass Co., c.1870-1880, Smith Books #3, 1-3/4" h. ??



619. US Glass Co., c.1890, two panel, amber, 1-5/8" h. \$10



620. McKee Glass Co., c.1860-1880, often called tomato salt, brown, 1-7/8" h. \$10



621. Early pedestal master, c.1860, six sided top, 3-3/8" h. \$10



622. Probably McKee Glass Co., c.1880-1890, pointed star, rare cut glass blue color, few tiny nicks, 1-1/3" h. \$20



623. Unknown six panel flint, c.1870, 2-1/2" h. \$5



624. Unknown collard bulls eye, flint, c.1860-1870, 2-1/4" h. \$10



625. McKee Bros. "Imperial" flint, c.1860, few chips on bottom, 2-1/2" h. ??



626. Bakewell Pears Glass Co., Pittsburg flint, "Ashburton", c.1850-70, 2-3/4" h. \$30



627. Unknown heavy pedestal, c.1867-1870, 3-5/8" h. **\$10**



628. Bakewell Pears Glass Co., Pittsburg flint, early Lotus or Tear Drop, c. 1868-70, 4" h. ??



629. Unknown six petal and bulls eye, c.1865-1870, flint, 3-3/4" h. **\$30**



630. Imperial Glass six lobed with six pointed star bottom, c.1860, 2" h. **\$5**



631. Unknown nine panel with rope bottom, c.1870, 1-3/4" h. ??



632. Unknown rectangular three panel by two panel with sunburst design in base, c.1880, 1-1/2" h. ??



633. Unknown, c.1870-1880, interesting six sided shape with rayed bottom, 1-1/2" h. **\$10**



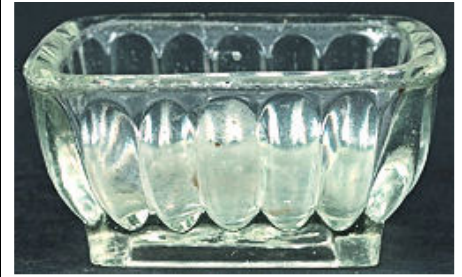
634. United States, c.1840-1860, egg and dart molding on top rim, sunburst bottom, very scarce, example in Corning Glass Museum, 1-5/8" h. **\$10**



635. English oval "rayed diamonds" English registry mark in center of bowl for Jan. 13th, 1880, (very scarce), 1-1/2" h. **\$10**



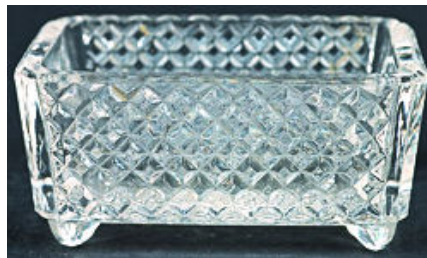
636. Two probably McKee Glass Co. rows of prisms cut glass, (1) 2-3/4" diam., (1) 2-1/2" diam.
\$10



637. Unknown rectangular eight pointed star in base, 1-1/2" h.
\$10



638. Various Co's: NE Glass, Sandwich, Bryce Bros., Gillinger, "sawtooth diamond", c.1860-1880, 2-3/4" h. ??



639. Unknown rectangular "many diamonds", c.1895, 1-1/2" h.
\$10



640. English Sowerby or Ellison, all were marked with a sea horse in bottom, oval thumb print and grooves, sunburst bottom, (scarce), 1-1/2" h.
\$10



641. Unknown, very unusual pattern on side, large diamond with six pointed star in center above smaller diamonds, c.1880, 1-3/4" h.
\$10



642. NE Glass also B&S Glass Co. pedestal "bulls eye," c.1850-1860, 2-3/4" h.
\$20



643. Probably sandwich pedestal six sided flutes, c.1870, 2-5/8" h.
\$10



644. Probably US Glass Co. pressed and cut "The Brilliant Period," c.1880-1910, 1-1/2" h. **\$10**



645. Adams & Co., Pittsburgh, Pa. "Kings Crown", c.1880-1910, very scarce, pressed glass in America 1825-1925, 1-3/4" h. **\$110**



646. Probably US Glass Co. "Panes and Posts," c.1880-1890, and panel pedestal salt, 2-1/2" h. **\$10**



647. Probably French double salt with handle, c.1890, 3-5/8" h. **\$10**



648. Heavy crystal free blown salt, c. 1850, (very scarce), 2" h. **\$110**

MISCELLANEOUS



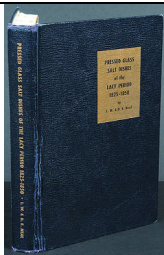
649. New England Glass Co. blown three mold open salt, slight blue iridescent, 1-1/2" h. **\$40**



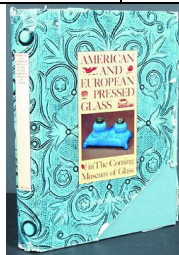
650. French, c 1842-1860 glass bowl socket salt on silver plated base, silver plate worn, (chips), 3-1/8" h. **\$40**



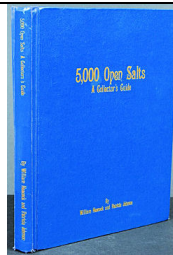
651. Crackle glass cranberry liner salt with Reed & Barton silver plate frame having Egyptian cat head and claw feet, c.1867-1875, 2-3/8" h. **\$80**



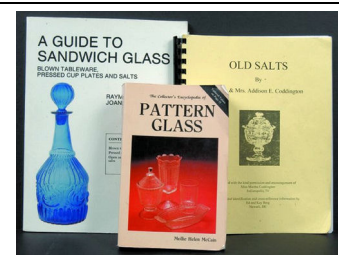
652. Pressed Glass Salt Dishes of the Lacy Period by LW & DB Neal **\$90**



653. American and European Pressed Glass in the Corning Museum of Glass by Jane Shadel Spillman **\$20**



654. 5000 open salts by Heacock & Johnson **\$20**



655. Three salt books: A Guide to Sandwich Glass including salts by Barlow & Kaiser; Old Salts by Coddington and Pattern Glass by Mollie H. McCain **\$20**



656. Lot of 25 various salt spoons - 13 coin, 5 sterling and 7 silver plate. **\$325**



657. Lot of 24 various salt spoons - 13 coin, 4 sterling and 7 silver plate. **\$250**



658. Blown Cobalt Blue Stiegel Type Footed Master Salt, expanded diamond pattern, broken pontil with comet tail, (hit bruise in lower body, otherwise good), 3" h.

\$375



660. Blown Colorless Stiegel Type Footed Master Salt, expanded diamond pattern with petal shape base with broken pontil (hit mark), 3" h.

\$275

(659. Not a salt)